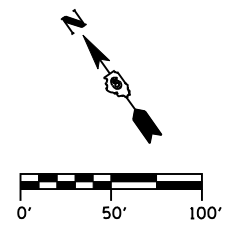
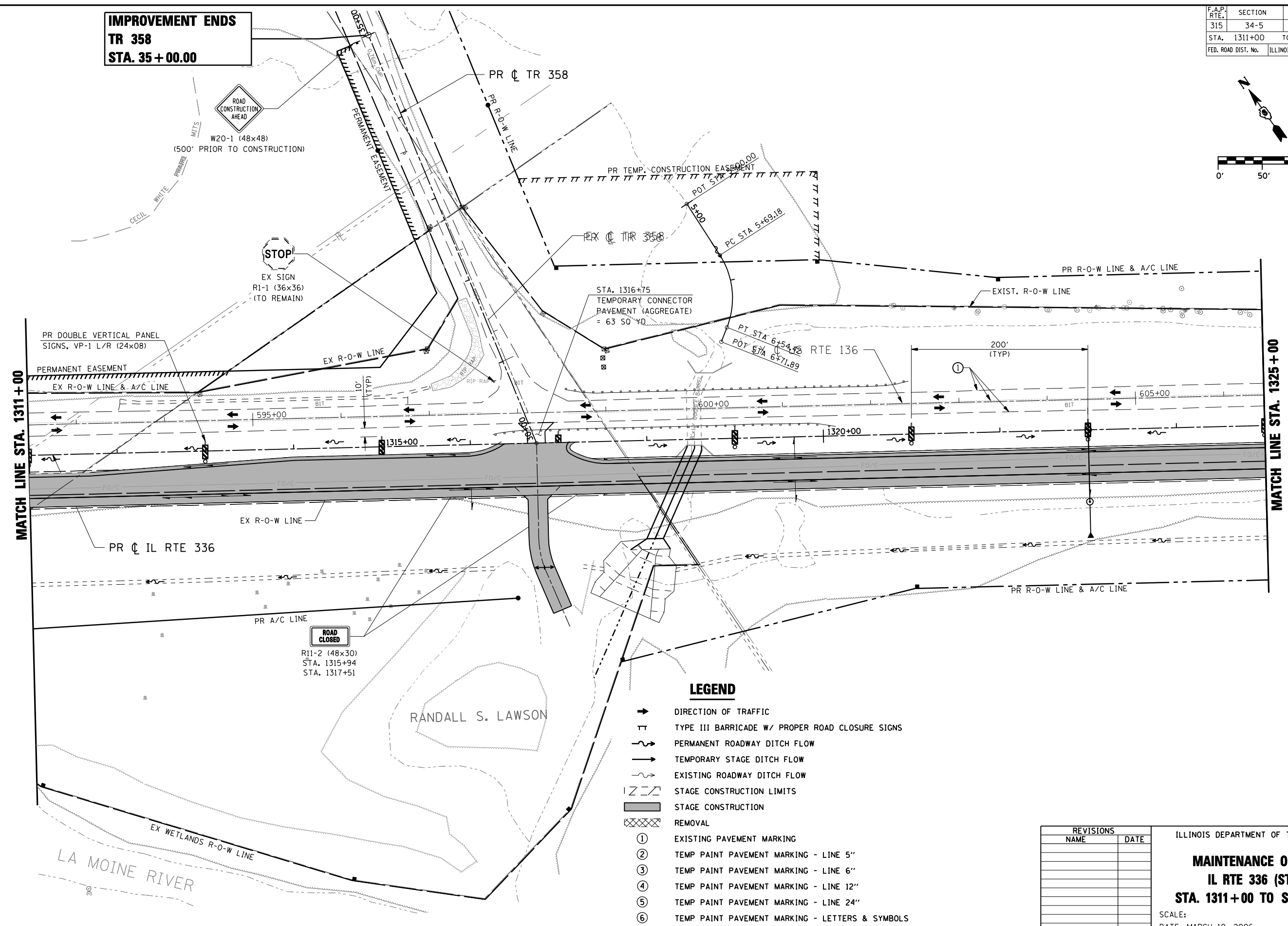


F.A.P. RTE.	SECTION	COUNTY	TOTAL SHEETS	SHEET No.
315	34-5	HANCOCK	612	111
STA. 1311+00		TO STA. 1325+00		
FED. ROAD DIST. No.		ILLINOIS		FED. AID PROJECT



IMPROVEMENT ENDS
TR 358
STA. 35 + 00.00



LEGEND

- ➔ DIRECTION OF TRAFFIC
- TT TYPE III BARRICADE W/ PROPER ROAD CLOSURE SIGNS
- ~ PERMANENT ROADWAY DITCH FLOW
- ~ TEMPORARY STAGE DITCH FLOW
- ~ EXISTING ROADWAY DITCH FLOW
- ||| STAGE CONSTRUCTION LIMITS
- █ STAGE CONSTRUCTION
- XXXXX REMOVAL
- ① EXISTING PAVEMENT MARKING
- ② TEMP PAINT PAVEMENT MARKING - LINE 5"
- ③ TEMP PAINT PAVEMENT MARKING - LINE 6"
- ④ TEMP PAINT PAVEMENT MARKING - LINE 12"
- ⑤ TEMP PAINT PAVEMENT MARKING - LINE 24"
- ⑥ TEMP PAINT PAVEMENT MARKING - LETTERS & SYMBOLS

REVISIONS	
NAME	DATE

ILLINOIS DEPARTMENT OF TRANSPORTATION
MAINTENANCE OF TRAFFIC
IL RTE 336 (STAGE 2)
STA. 1311+00 TO STA. 1325+00
 SCALE: DATE: MARCH 10, 2006
 DRAWN BY: RG
 CHECKED BY: JAC

•DGN-SPEC•
 •DATE-TIME•
 •REF01