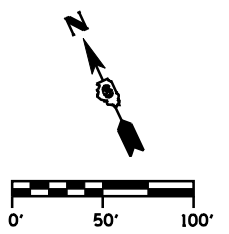
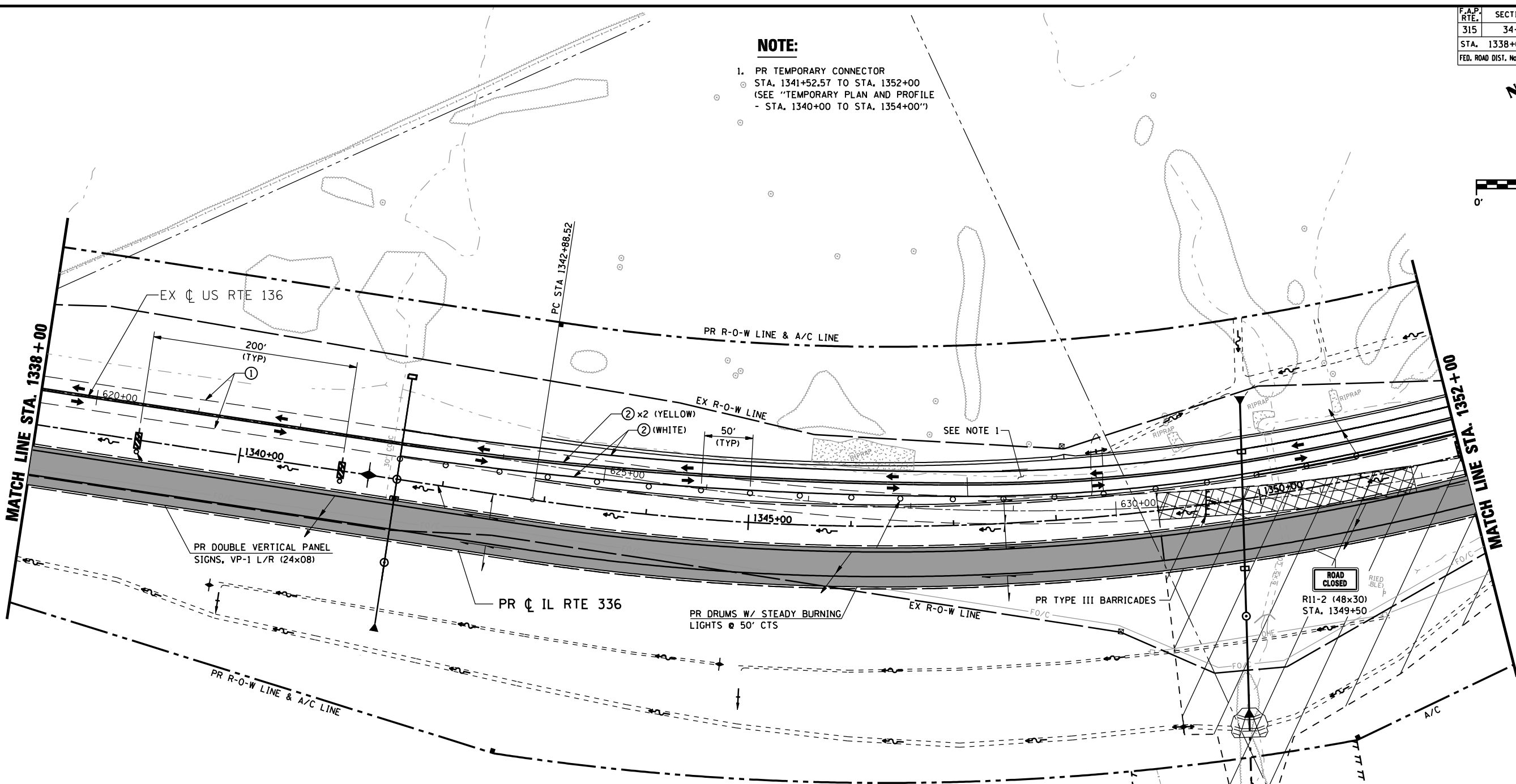


F.A.P. RTE.	SECTION	COUNTY	TOTAL SHEETS	SHEET No.
315	34-5	HANCOCK	612	113
STA. 1338+00		TO STA. 1352+00		
FED. ROAD DIST. No.	ILLINOIS	FED. AID PROJECT		



NOTE:

- PR TEMPORARY CONNECTOR
 STA. 1341+52.57 TO STA. 1352+00
 (SEE "TEMPORARY PLAN AND PROFILE - STA. 1340+00 TO STA. 1354+00")



LEGEND

- DIRECTION OF TRAFFIC
- TT TYPE III BARRICADE W/ PROPER ROAD CLOSURE SIGNS
- ~ PERMANENT ROADWAY DITCH FLOW
- TEMPORARY STAGE DITCH FLOW
- ~ EXISTING ROADWAY DITCH FLOW
- ▨ STAGE CONSTRUCTION LIMITS
- ▨ STAGE CONSTRUCTION
- XXXXX REMOVAL
- ① EXISTING PAVEMENT MARKING
- ② TEMP PAINT PAVEMENT MARKING - LINE 5"
- ③ TEMP PAINT PAVEMENT MARKING - LINE 6"
- ④ TEMP PAINT PAVEMENT MARKING - LINE 12"
- ⑤ TEMP PAINT PAVEMENT MARKING - LINE 24"
- ⑥ TEMP PAINT PAVEMENT MARKING - LETTERS & SYMBOLS

REVISIONS	
NAME	DATE

ILLINOIS DEPARTMENT OF TRANSPORTATION
MAINTENANCE OF TRAFFIC
IL RTE 336 (STAGE 2)
STA. 1338+00 TO STA. 1352+00
 SCALE: DATE: MARCH 10, 2006
 DRAWN BY: RG
 CHECKED BY: JAC

•DGN-SPEC•
 •DATE-TIME•
 •REF01