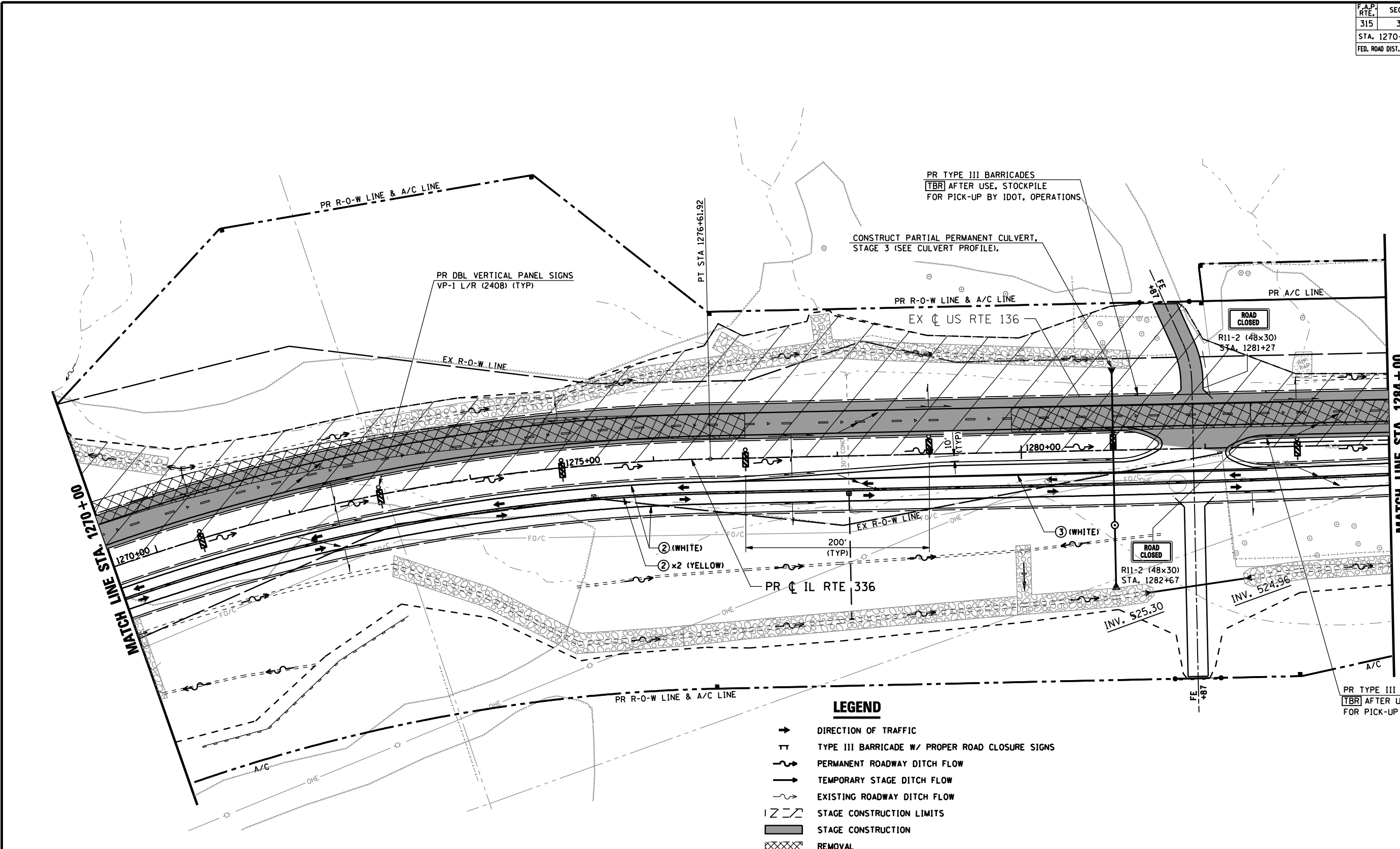
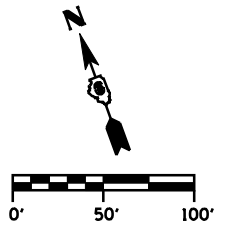


F.A.P. RTE.	SECTION	COUNTY	TOTAL SHEETS	SHEET No.
315	34-5	HANCOCK	612	131
STA. 1270+00		TO STA. 1284+00		
FED. ROAD DIST. No.	ILLINOIS	FED. AID PROJECT		



- LEGEND**
- DIRECTION OF TRAFFIC
 - T TYPE III BARRICADE W/ PROPER ROAD CLOSURE SIGNS
 - ~ PERMANENT ROADWAY DITCH FLOW
 - ~ TEMPORARY STAGE DITCH FLOW
 - ~ EXISTING ROADWAY DITCH FLOW
 - STAGE CONSTRUCTION LIMITS
 - █ STAGE CONSTRUCTION
 - ▨ REMOVAL
 - ① EXISTING PAVEMENT MARKING
 - ② TEMP PAINT PAVEMENT MARKING - LINE 5"
 - ③ TEMP PAINT PAVEMENT MARKING - LINE 6"
 - ④ TEMP PAINT PAVEMENT MARKING - LINE 12"
 - ⑤ TEMP PAINT PAVEMENT MARKING - LINE 24"
 - ⑥ TEMP PAINT PAVEMENT MARKING - LETTERS & SYMBOLS

REVISIONS	
NAME	DATE

ILLINOIS DEPARTMENT OF TRANSPORTATION
MAINTENANCE OF TRAFFIC
IL 336 (STAGE 3)
STA. 1270+00 TO STA. 1284+00
 SCALE: DATE: MARCH 10, 2006
 DRAWN BY: RG
 CHECKED BY: JAC

•DGN-SPEC•
 •DATE-TIME•
 •REF01