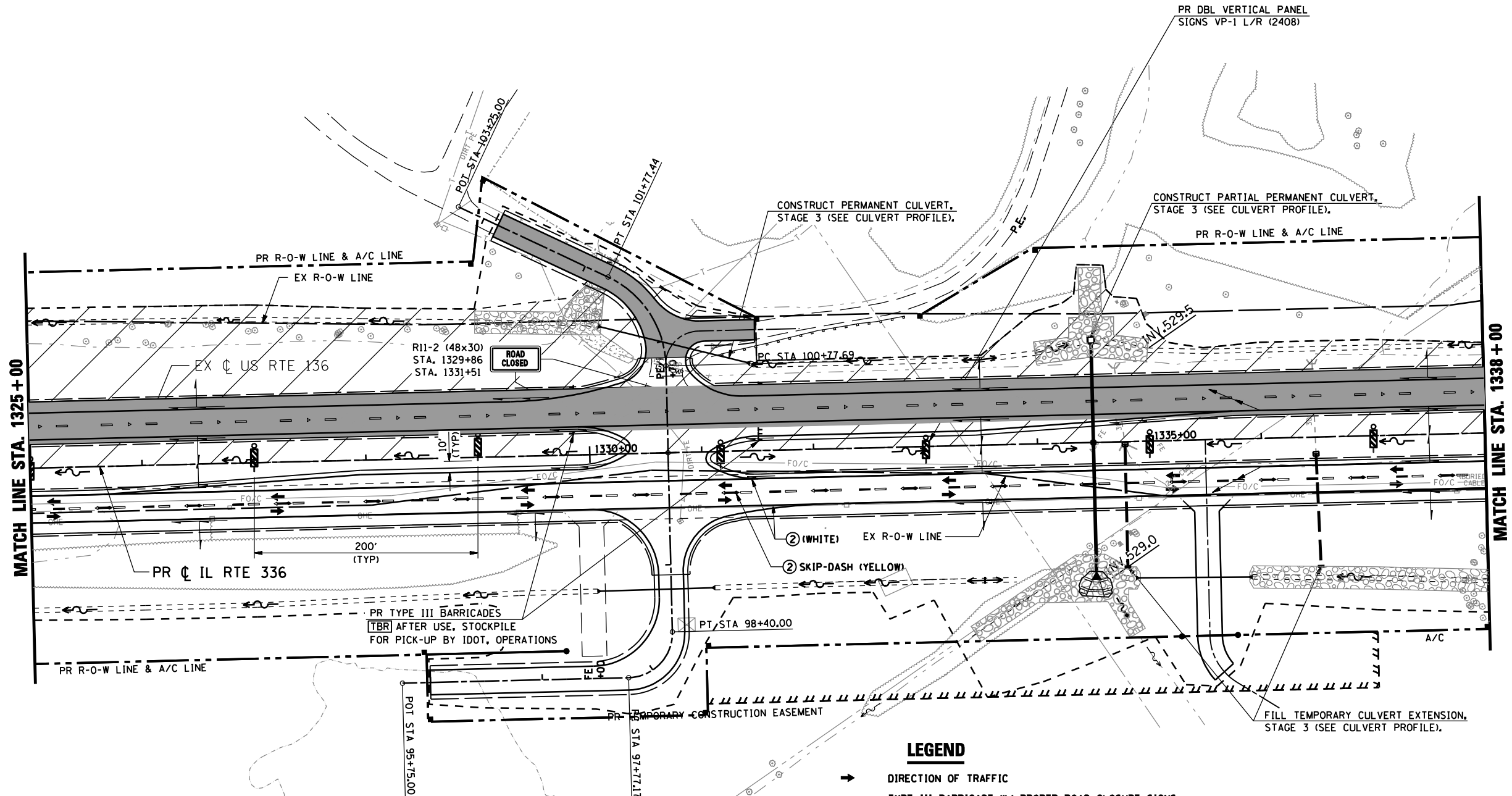
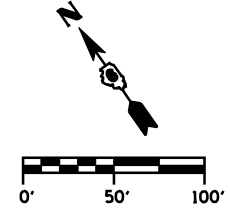


F.A.P. RTE.	SECTION	COUNTY	TOTAL SHEETS	SHEET No.
315	34-5	HANCOCK	612	135
STA. 1325+00 TO STA. 1338+00		FED. ROAD DIST. No. ILLINOIS FED. AID PROJECT		



LEGEND

- ➔ DIRECTION OF TRAFFIC
- ⊥ TYPE III BARRICADE W/ PROPER ROAD CLOSURE SIGNS
- ➔ PERMANENT ROADWAY DITCH FLOW
- ➔ TEMPORARY STAGE DITCH FLOW
- ➔ EXISTING ROADWAY DITCH FLOW
- ▭ STAGE CONSTRUCTION LIMITS
- ▭ STAGE CONSTRUCTION
- ▭ REMOVAL
- ① EXISTING PAVEMENT MARKING
- ② TEMP PAINT PAVEMENT MARKING - LINE 5"
- ③ TEMP PAINT PAVEMENT MARKING - LINE 6"
- ④ TEMP PAINT PAVEMENT MARKING - LINE 12"
- ⑤ TEMP PAINT PAVEMENT MARKING - LINE 24"
- ⑥ TEMP PAINT PAVEMENT MARKING - LETTERS & SYMBOLS

REVISIONS	
NAME	DATE

ILLINOIS DEPARTMENT OF TRANSPORTATION
MAINTENANCE OF TRAFFIC
IL 336 (STAGE 3)
STA. 1325+00 TO STA. 1338+00
 SCALE: _____ DRAWN BY: RG
 DATE: MARCH 10, 2006 CHECKED BY: JAC

DGN-SPEC
 DATE-TIME
 *REF01