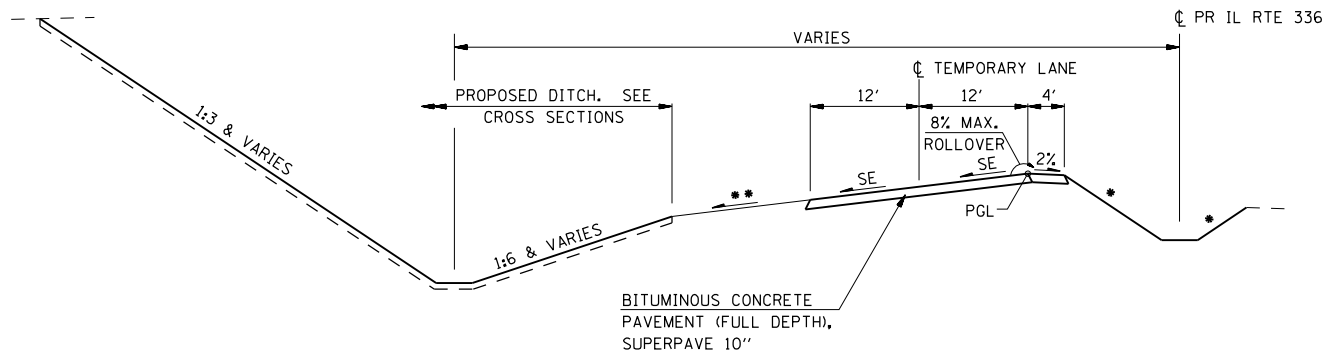


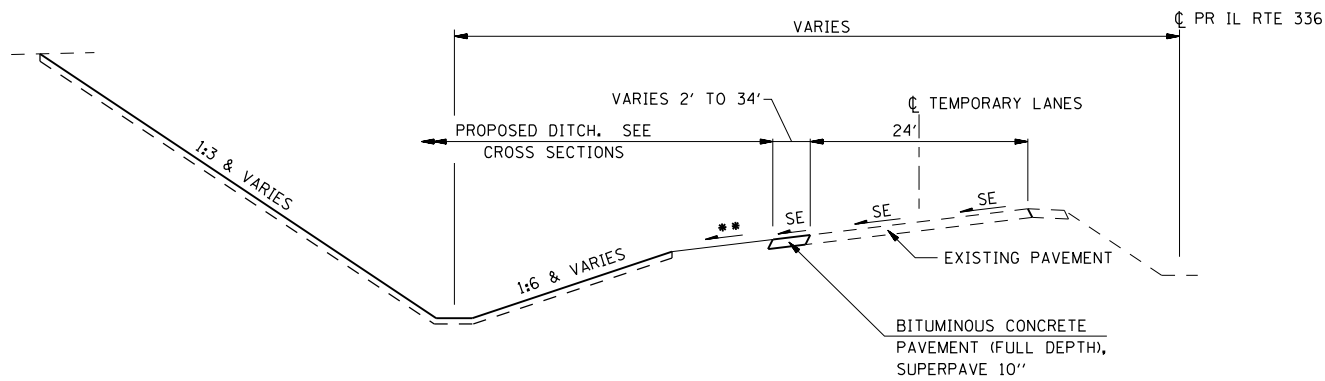
F.A.P. RTE.	SECTION	COUNTY	TOTAL SHEETS	SHEET No.
315	34-5	HANCOCK	612	142
STA. 304+97.81		TO STA. 313+32.51		
FED. ROAD DIST. No.		ILLINOIS	FED. AID PROJECT	



TYPICAL SECTION

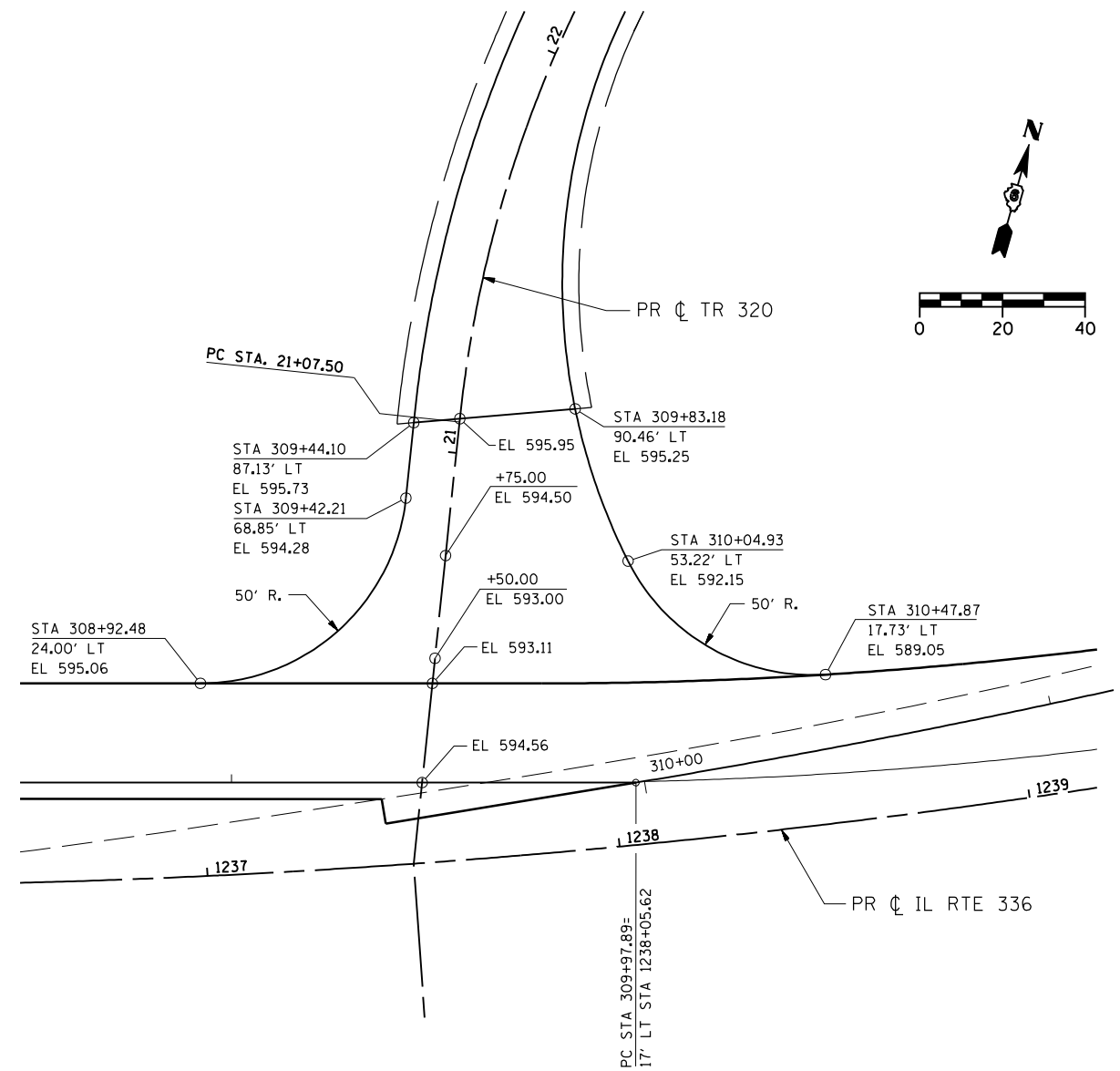
STA 304+97.81 TO STA 309+36.39

- 1:3 OR FLATTER DESIRABLE
- EXTEND SE SLOPE TO PROPOSED FINAL DITCHES. SEE CROSS SECTIONS



TYPICAL SECTION

STA 309+36.39 TO STA 313+32.51



**PLAN - TR 320
TEMPORARY CONNECTOR**

LT STA 309+46.15 = STA 1237+53.46 (IL 336)

REVISIONS	
NAME	DATE

ILLINOIS DEPARTMENT OF TRANSPORTATION

**TEMPORARY CONNECTOR
DETAILS**

SCALE: DATE: MARCH 10, 2006 DRAWN BY: RG CHECKED BY: JAC

•DGN-SPEC•
•DATE-TIME•
•REF01

D6 PROJECT: FILE: .