

SE 1/4, SW 1/4, SEC. 16 T5N R5W

CADWELL, ROBERT & FRANCES

PARCEL No. 6033112

CURVE TEMP-2 DATA

PI STA 311+65.55= 19.36' LT STA 1239+74.48  
 $\Delta = 9^\circ 01' 21''$  (LT)  
 $D = 2^\circ 41' 47''$   
 $R = 2,125.00'$   
 $T = 167.66'$   
 $L = 334.62'$   
 $E = 6.60'$   
 $e = 0.06''$   
 PC STA 309+97.89  
 PT STA 313+32.51

CURVE TEMP-1 DATA

PI STA 305+56.19= 11.15' LT STA 1233+58.01  
 $\Delta = 13^\circ 12' 07''$  (LT)  
 $D = 2^\circ 45' 38''$   
 $R = 2,075.46'$   
 $T = 240.17'$   
 $L = 478.22'$   
 $E = 13.85'$   
 $e = 0.06''$   
 PC STA 303+16.02  
 PT STA 307+94.24

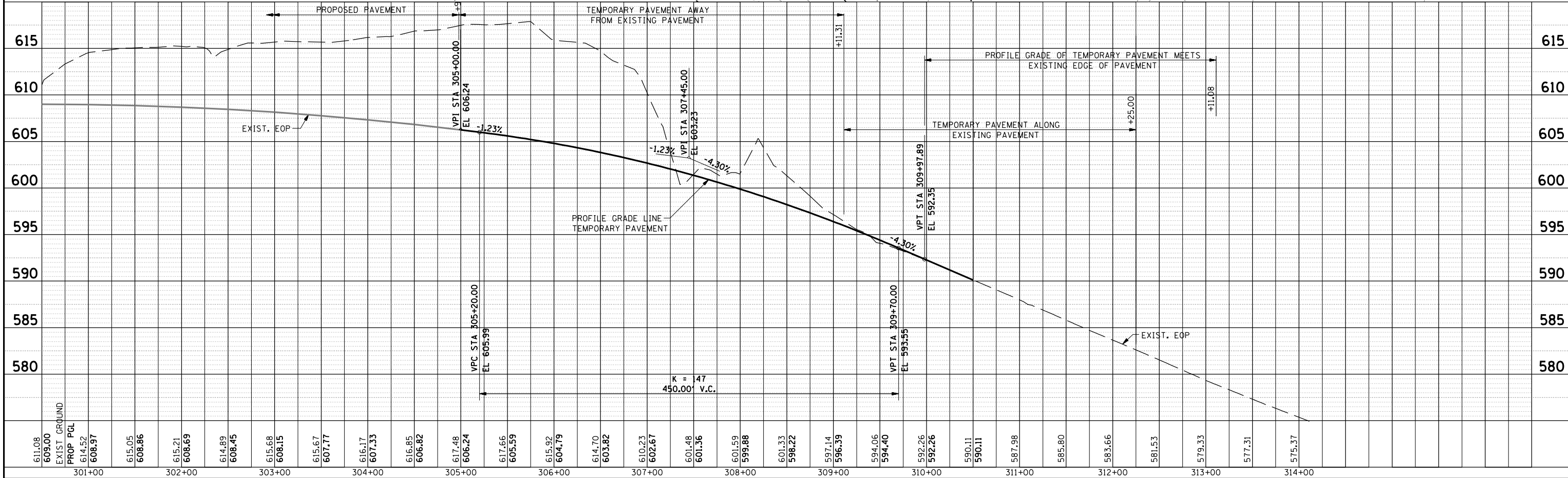
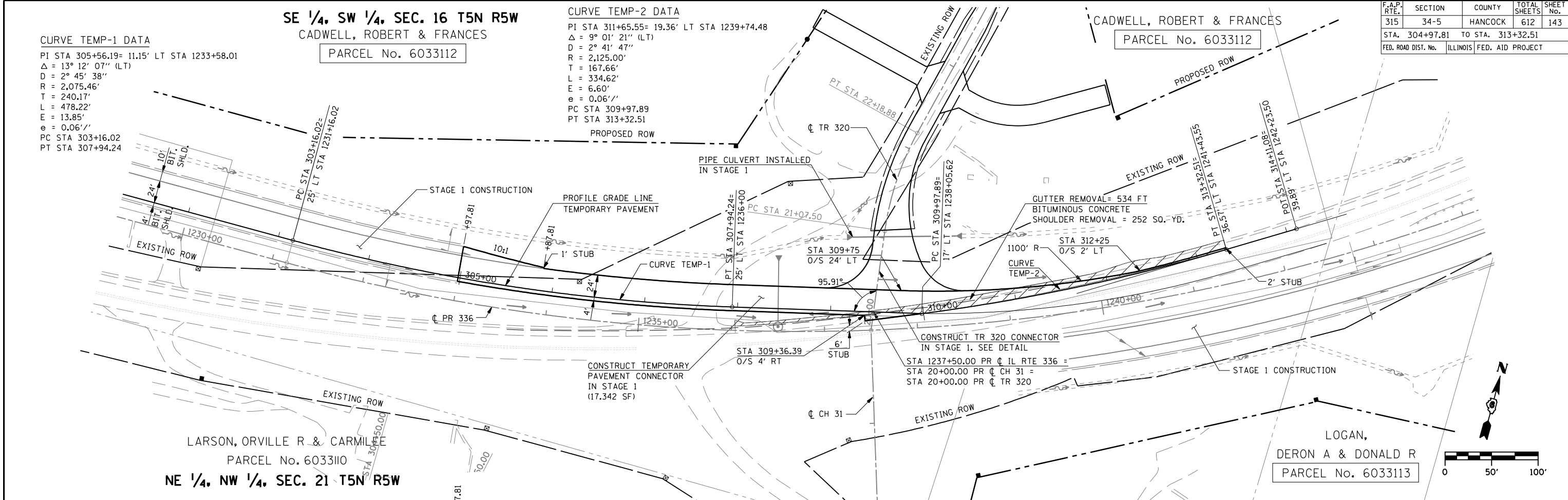
F.A.P. RTE.	SECTION	COUNTY	TOTAL SHEETS	SHEET No.
315	34-5	HANCOCK	612	143

STA. 304+97.81 TO STA. 313+32.51  
 FED. ROAD DIST. No. ILLINOIS FED. AID PROJECT

PLAN	DATE
SURVEYED	
PLOTTED	
CHECKED	
BY	
NO.	

PROFILE	DATE
SURVEYED	
PLOTTED	
CHECKED	
BY	
NO.	

\*DGN-SPEC\*  
 \*DATE-TIME\*  
 \*REF01



D6 PROJECT: FILE: