

F.A.P. RTE.	SECTION	COUNTY	TOTAL SHEETS	SHEET No.
315	34-5	HANCOCK	612	145
STA. 341+52.56 TO STA. 356+00				
FED. ROAD DIST. No. ILLINOIS FED. AID PROJECT				

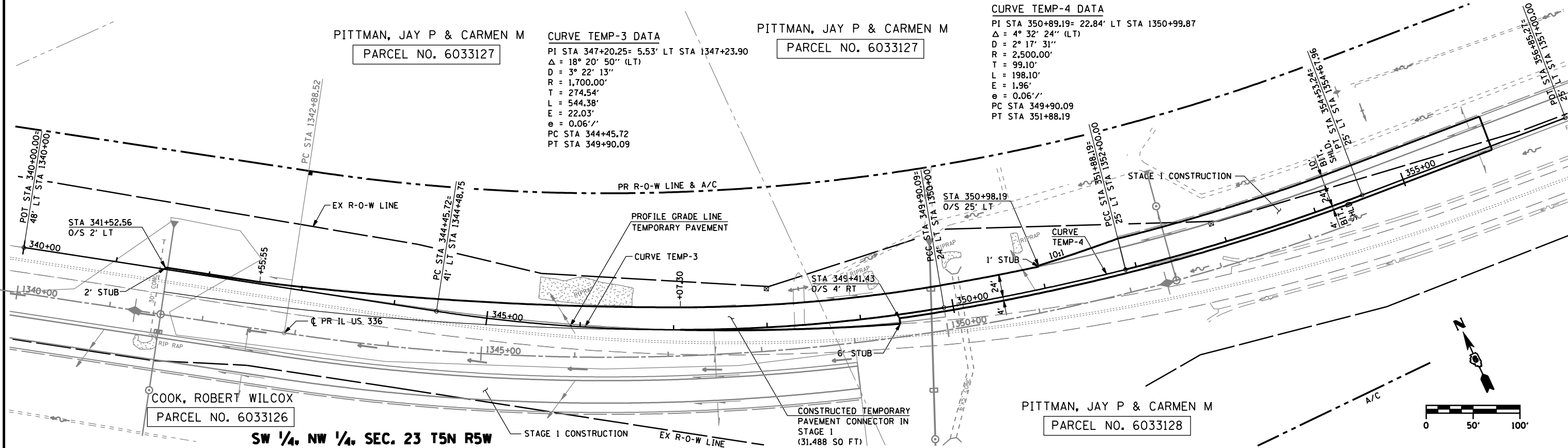
SE 1/4, NW 1/4, SEC. 23 T5N R5W

PITTMAN, JAY P & CARMEN M
PARCEL NO. 6033127

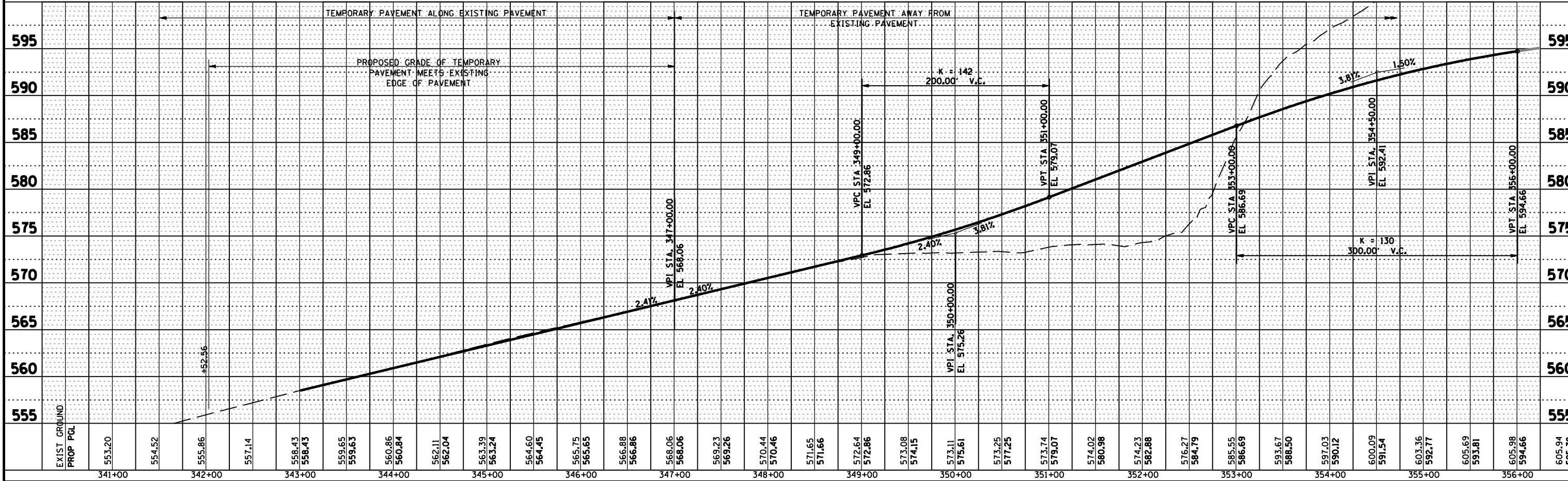
CURVE TEMP-3 DATA
PI STA 347+20.25= 5.53' LT STA 1347+23.90
Δ = 18° 20' 50" (LT)
D = 3° 22' 13"
R = 1,700.00'
T = 274.54'
L = 544.38'
E = 22.03'
e = 0.06'/'
PC STA 344+45.72
PT STA 349+90.09

PITTMAN, JAY P & CARMEN M
PARCEL NO. 6033127

CURVE TEMP-4 DATA
PI STA 350+89.19= 22.84' LT STA 1350+99.87
Δ = 4° 32' 24" (LT)
D = 2° 17' 31"
R = 2,500.00'
T = 99.10'
L = 198.10'
E = 1.96'
e = 0.06'/'
PC STA 349+90.09
PT STA 351+88.19



TEMPORARY PAVEMENT ALONG EXISTING PAVEMENT TEMPORARY PAVEMENT AWAY FROM EXISTING PAVEMENT



PLAN	SURVEYED	BY	DATE
	PLOTTED		
	CHECKED		
	DATE		
	NO. OF WAY CHECKED		
	CADD FILE NAME		

PROFILE	SURVEYED	BY	DATE
	PLOTTED		
	CHECKED		
	DATE		
	NO. OF WAY CHECKED		
	STRUCTURE NOTATIONS CHRD		

DGN-SPEC
DATE-TIME
*REF01

D6 PROJECT: FILE: