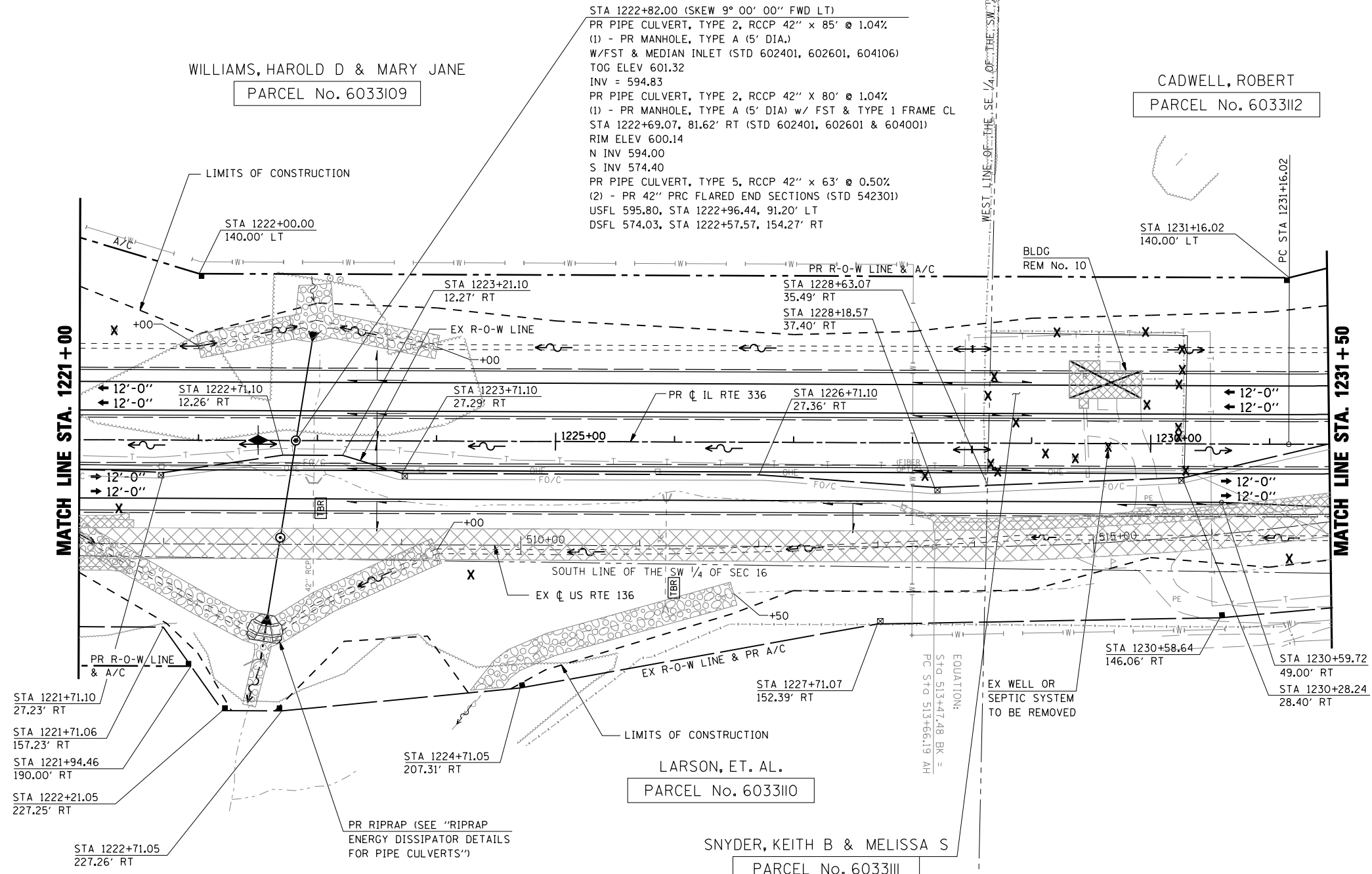
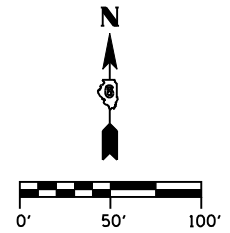


F.A.P. RTE.	SECTION	COUNTY	TOTAL SHEETS	SHEET No.
315	34-5	HANCOCK	612	158
STA. 1221+00		TO STA. 1231+50		
FED. ROAD DIST. No.		ILLINOIS	FED. AID PROJECT	

SW 1/4, SW 1/4, SEC. 16 T5N R5W

SE 1/4, SW 1/4, SEC. 16 T5N R5W



**CURVE C1 DATA**

PI STA	1238+44.42
Δ =	38° 15' 04" (LT)
D =	2° 43' 40"
R =	2,100.46'
T =	728.40'
L =	1,402.28'
E =	122.71'
e =	0.06'/'
T.R. =	39'
S.E. RUN =	270'
PC STA	1231+16.02
PT STA	1245+18.30
S.E. ATTAINED FROM	STA 1228+97.02 TO 1232+06.02
S.E. REMOVED FROM	STA 1244+28.30 TO 1247+37.30

**LEGEND**

- EARTH MEDIAN
- DITCH CHECK
- TRANSVERSE DRAIN

REVISIONS	
NAME	DATE

ILLINOIS DEPARTMENT OF TRANSPORTATION

**ROADWAY PLAN**

**IL RTE 336**

**STA. 1221+00 TO STA. 1231+50**

SCALE: \_\_\_\_\_ DRAWN BY: RG

DATE: MARCH 10, 2006 CHECKED BY: JAC

NW 1/4, NW 1/4, SEC. 21 T5N R5W

NE 1/4, NW 1/4, SEC. 21 T5N R5W

•DGN-SPEC•  
•DATE-TIME•  
•REF01