

F.A.P. RTE.	SECTION	COUNTY	TOTAL SHEETS	SHEET No.
315	34-5	HANCOCK	612	164
STA. 1256+00 TO STA. 1270+00				
FED. ROAD DIST. No.		ILLINOIS	FED. AID PROJECT	

NE 1/4, SE 1/4, SEC. 16 T5N R5W

NW 1/4, SE 1/4, SEC. 16 T5N R5W

WHITE, ELEANOR L TR  
PARCEL NO. 6033117

WHITE, ELEANOR L TR  
PARCEL NO. 6033117

STA 1268+75.00  
PR PIPE CULVERT, TYPE 4, CS/A 15" X 155' @ 11.84%  
(2) - PR 15" METAL END SECTIONS (STD 542401)  
USFL 579.00, STA 1268+18.91, 85.75' LT  
DSFL 560.35, STA 1269+53.44, 155.50' LT

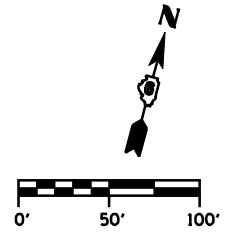
END ACCESS CONTROL  
STA 1267+95.00  
206.41' LT

SEE "ENTRANCE  
DETAILS" (TYP.)

END ACCESS CONTROL  
STA 1268+51.00  
204.57' LT

STA 1268+72.38  
204.30' LT

STA 1270+00.00  
187.27' LT

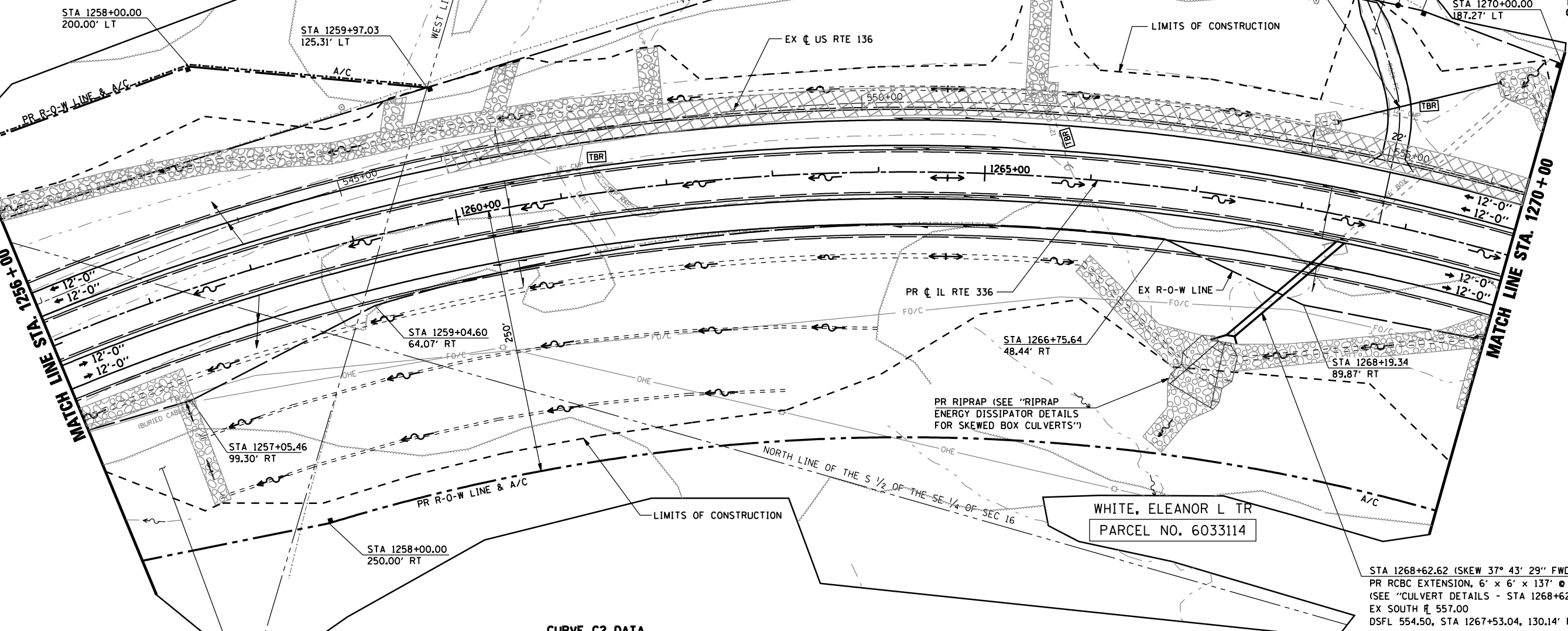


STA 1258+00.00  
200.00' LT

STA 1259+97.03  
125.31' LT

STA 1263+83.69  
205.26' LT

STA 1266+28.04  
221.73' LT



DAVIS, KEVIN R & ELISA J  
PARCEL NO. 6033113

**CURVE C2 DATA**  
PI STA 1267+15.31  
 $\Delta = 56^\circ 48' 10''$  (RT)  
D =  $2^\circ 43' 40''$   
R = 2,100.46'  
T = 1,135.78'  
L = 2,082.38'  
E = 287.41'  
 $e = 0.06' /'$   
T.R. = 39'  
S.E. RUN = 270'  
PC STA 1255+79.53  
PT STA 1276+61.92  
S.E. ATTAINED FROM  
STA 1253+60.53 TO 1256+69.53  
S.E. REMOVED FROM  
STA 1275+71.92 TO 1278+80.92

WHITE, ELEANOR L TR  
PARCEL NO. 6033114

WHITE, ELEANOR L TR  
PARCEL NO. 6033114

STA 1268+62.62 (SKEW  $37^\circ 43' 29''$  FWD LT @ LOCAL TANGENT)  
PR RCBC EXTENSION, 6' x 6' x 137' @ 1.83% (DOWNSTREAM)  
(SEE "CULVERT DETAILS - STA 1268+62.62")  
EX SOUTH @ 557.00  
DSFL 554.50, STA 1267+53.04, 130.14' RT

SW 1/4, SE 1/4, SEC. 16 T5N R5W

SE 1/4, SE 1/4, SEC. 16 T5N R5W

**LEGEND**

- EARTH MEDIAN
- DITCH CHECK
- TRANSVERSE DRAIN

REVISIONS	
NAME	DATE

ILLINOIS DEPARTMENT OF TRANSPORTATION  
**ROADWAY PLAN**  
**IL RTE 336**  
**STA. 1256+00 TO STA. 1270+00**  
SCALE: DRAWN BY: RG  
DATE: MARCH 10, 2006 CHECKED BY: JAC

\*DGN-SPEC\*  
 \*DATE-TIME\*  
 \*REF01