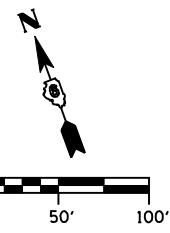
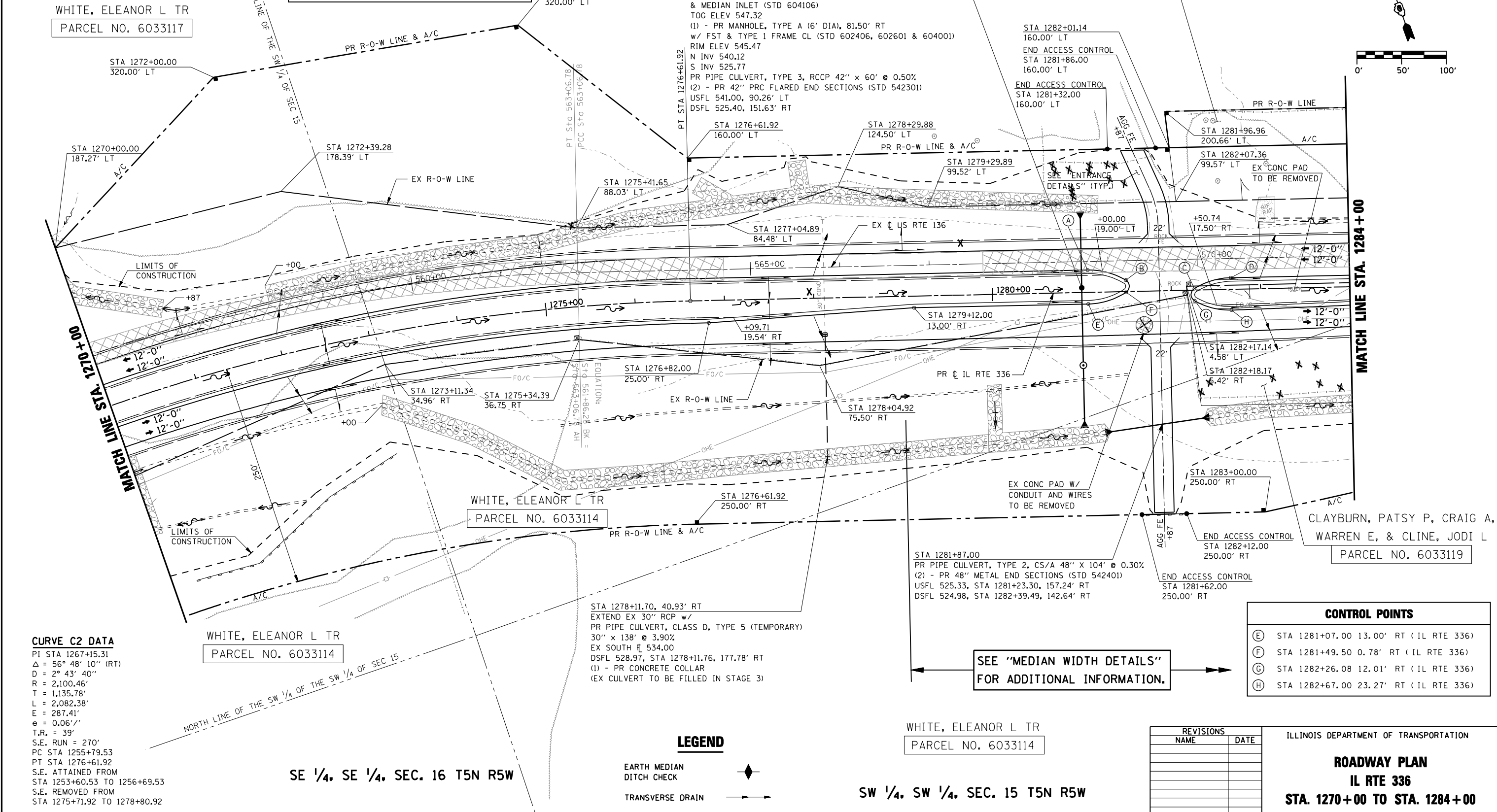


F.A.P. RTE.	SECTION	COUNTY	TOTAL SHEETS	SHEET No.
315	34-5	HANCOCK	612	166
STA. 1270+00 TO STA. 1284+00				
FED. ROAD DIST. No.		ILLINOIS	FED. AID PROJECT	

NW 1/4, SW 1/4, SEC. 15 T5N R5W

NE 1/4, SE 1/4, SEC. 16 T5N R5W

CONTROL POINTS	
(A)	STA 1281+07.00 25.00' LT (IL RTE 336)
(B)	STA 1281+49.50 12.78' LT (IL RTE 336)
(C)	STA 1282+26.08 1.74' LT (IL RTE 336)
(D)	STA 1282+67.00 13.00' LT (IL RTE 336)



**CURVE C2 DATA**  
 PI STA 1267+15.31  
 Δ = 56° 48' 10" (RT)  
 D = 2° 43' 40"  
 R = 2,100.46'  
 T = 1,135.78'  
 L = 2,082.38'  
 E = 287.41'  
 e = 0.06'/'  
 T.R. = 39'  
 S.E. RUN = 270'  
 PC STA 1255+79.53  
 PT STA 1276+61.92  
 S.E. ATTAINED FROM STA 1253+60.53 TO 1256+69.53  
 S.E. REMOVED FROM STA 1275+71.92 TO 1278+80.92

SEE "MEDIAN WIDTH DETAILS" FOR ADDITIONAL INFORMATION.

CONTROL POINTS	
(E)	STA 1281+07.00 13.00' RT (IL RTE 336)
(F)	STA 1281+49.50 0.78' RT (IL RTE 336)
(G)	STA 1282+26.08 12.01' RT (IL RTE 336)
(H)	STA 1282+67.00 23.27' RT (IL RTE 336)

**LEGEND**

- EARTH MEDIAN DITCH CHECK
- TRANSVERSE DRAIN

REVISIONS	
NAME	DATE

ILLINOIS DEPARTMENT OF TRANSPORTATION  
**ROADWAY PLAN**  
**IL RTE 336**  
**STA. 1270+00 TO STA. 1284+00**  
 SCALE: DATE: MARCH 10, 2006  
 DRAWN BY: RG  
 CHECKED BY: JAC