

SW 1/4, SE 1/4, SEC. 15 T5N R5W

STATE OF ILLINOIS
DEPARTMENT OF NATURAL RESOURCES

PARCEL NO. 6033120

| F.A.P. RTE. | SECTION | COUNTY | TOTAL SHEETS | SHEET No. |
|---------------------|---------|-----------------|------------------|-----------|
| 315 | 34-5 | HANCOCK | 612 | 170 |
| STA. 1297+00 | | TO STA. 1311+00 | | |
| FED. ROAD DIST. No. | | ILLINOIS | FED. AID PROJECT | |

① STA 1299+06.80, 6.72' RT
EXTEND EX 3" x 3" RCBC w/
PR PIPE CULVERT, CLASS D, TYPE 3 (TEMPORARY)
42" x 108" @ 5.0%
EX SOUTH @ 533.22
DSFL 527.90, STA 1299+41.78, 108.76' RT
(1) - PR CONCRETE COLLAR
(EX CULVERT TO BE REMOVED ADJACENT TO OUTLET
AND REMAINDER FILLED DURING STAGE 3)

③ STA 1304+25.90, 19.05' RT
EXTEND EX 30" RCP w/
PR PIPE CULVERT, CLASS D, TYPE 3 (TEMPORARY)
30" x 97" @ 2.0%
EX SOUTH @ 530.50
DSFL 528.60, STA 1304+37.04, 114.92' RT
(1) - PR CONCRETE COLLAR
(EX CULVERT TO BE REMOVED ADJACENT TO OUTLET
AND REMAINDER FILLED DURING STAGE 3)

② STA 1301+62.05, 7.42' LT
EXTEND EX 30" RCP w/
PR PIPE CULVERT, CLASS D, TYPE 2 (TEMPORARY)
30" x 118" @ 6.3%
EX SOUTH @ 536.69
DSFL 529.20, STA 1301+53.52, 109.66' RT
(1) - PR CONCRETE COLLAR
(EX CULVERT TO BE REMOVED ADJACENT TO OUTLET
AND REMAINDER FILLED DURING STAGE 3)

④ STA 1308+20.42, 29.67' RT
EXTEND EX 30" RCP w/
PR PIPE CULVERT, CLASS D, TYPE 3 (TEMPORARY)
30" x 97" @ 2.0%
EX SOUTH @ 527.20
DSFL 525.28, STA 1307+98.86, 125.70' RT
(1) - PR CONCRETE COLLAR
(EX CULVERT TO BE REMOVED ADJACENT TO OUTLET
AND REMAINDER FILLED DURING STAGE 3)

STA 1301+70.00
PR PIPE CULVERT, TYPE 2, RCCP 30" x 22" @ 1.50%
(1) - PR MAINHOLE, TYPE A (5' DIA.) 60.50' LT
W/FST AND TYPE 9 FRAME & GRATE
(STD 602401, 602601 & 604041)
GRATE @ ELEV 544.04
PR PIPE CULVERT, TYPE 2, RCCP 30" x 136" @ 1.50%
(1) - PR MANHOLE, TYPE A (5' DIA.), 75.62' RT
w/ FST & TYPE 1 FRAME CL (STD 602401, 602601 & 604001)
RIM ELEV 540.45
N INV 536.11
S INV 526.79
PR PIPE CULVERT, TYPE 2, RCCP 30" x 33" @ 1.00%
(2) - PR 30" PRC FLARED END SECTIONS (STD 542301)
USFL 538.57, 88.67' LT
DSFL 526.40, 115.21' RT

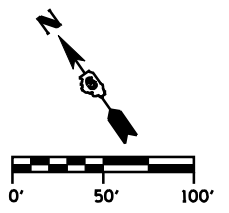
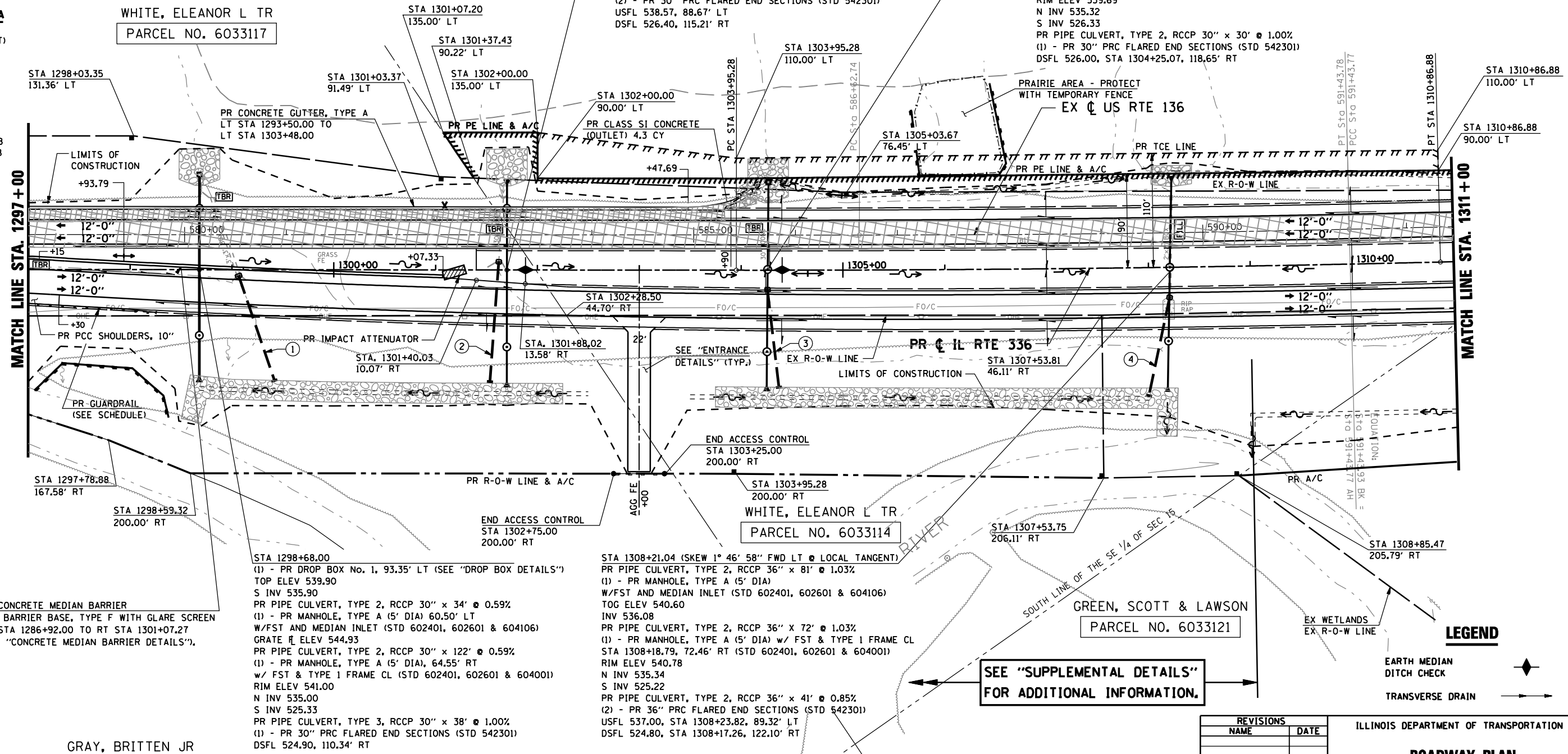
STA 1304+26.11 (SKEW 0° 30' 08" FWD LT @ LOCAL TANGENT)
(1) - PR DROP BOX No. 2 (SEE "DROP BOX DETAILS")
STA 1304+26.87, 86.50' LT
TOP ELEV 540.70
USFL 537.00
PR PIPE CULVERT, TYPE 2, RCCP 30" x 85" @ 1.00%
(1) - PR MANHOLE, TYPE A (5' DIA.) 0.70' LT
W/FST AND MEDIAN INLET (STD 602401, 602601 & 604106)
TOG ELEV 541.77
INV. 536.15
PR PIPE CULVERT, TYPE 2, RCCP 30" x 83" @ 1.00%
(1) - PR MANHOLE, TYPE A (5' DIA) w/ FST & TYPE 1 FRAME CL
STA 1304+25.36, 80.09' RT (STD 602401, 602601 & 604001)
RIM ELEV 539.69
N INV 535.32
S INV 526.33
PR PIPE CULVERT, TYPE 2, RCCP 30" x 30" @ 1.00%
(1) - PR 30" PRC FLARED END SECTIONS (STD 542301)
DSFL 526.00, STA 1304+25.07, 118.65' RT

CURVE C4 DATA

PI STA 1307+41.10
Δ = 1° 26' 27" (LT)
D = 0° 12' 30"
R = 27,501.97'
T = 345.82'
L = 691.60'
E = 2.17'
e = N.C.
T.R. = N/A
S.E. RUN = N/A
PC STA 1303+95.28
PT STA 1310+86.88

WHITE, ELEANOR L TR

PARCEL NO. 6033117



SEE "SUPPLEMENTAL DETAILS"
FOR ADDITIONAL INFORMATION.

LEGEND

- ◆ EARTH MEDIAN DITCH CHECK
- TRANSVERSE DRAIN

| REVISIONS | |
|-----------|------|
| NAME | DATE |
| | |
| | |
| | |
| | |
| | |

ILLINOIS DEPARTMENT OF TRANSPORTATION
ROADWAY PLAN
IL RTE 336
STA. 1297+00 TO STA. 1311+00
SCALE: _____ DRAWN BY: RG
DATE: MARCH 10, 2006 CHECKED BY: JAC

GRAY, BRITTEN JR

WHITE, ELEANOR L TR

PARCEL NO. 6033114

SE 1/4, SW 1/4, SEC. 15 T5N R5W

NW 1/4, NE 1/4, SEC. 22 T5N R5W

•DGN: SPEC•
•DATE: TIME•
•REF: 01

D6 PROJECT: FILE: