

F.A.P. RTE.	SECTION	COUNTY	TOTAL SHEETS	SHEET No.
315	34-5	HANCOCK	612	176
STA. 1338+00		TO STA. 1352+00		
FED. ROAD DIST. No.		ILLINOIS	FED. AID PROJECT	

NW 1/4, NW 1/4, SEC. 23 T5N R5W

WHITFORD, ROBERT & BROOKLEE
 PARCEL NO. 6033125

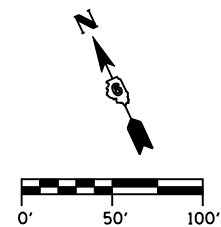
STA 1349+83.00 (SKEW 7° 00' 00" FWD LT @ LOCAL TANGENT)
 PR TRENCHLESS PIPE INSTALLATION SMOOTH STEEL PIPE, 54" x 108' @ 2.00%
 US STEEL INV 563.92, STA 1349+88.76, 45.99' LT
 DS STEEL INV 561.77, STA 1349+75.69, 61.12' RT
 EXTEND FROM STEEL PIPE INVERTS w/
 PR PIPE CULVERT, TYPE 2, RCCP 54" x 46' @ 2.00% (UPSTREAM) TO:
 STA 1349+94.64, 91.01' LT
 PR PIPE CULVERT, TYPE 3, RCCP 54" x 50' @ 2.00% (DOWNSTREAM) TO:
 PR MANHOLE
 EXTEND FROM PR MANHOLE w/
 PR PIPE CULVERT, TYPE 6T, RCCP 54" x 88' @ 0.50% TO:
 STA 1349+60.14, 202.77' RT
 (1) - PR MANHOLE, TYPE A (6' DIA), STA 1349+69.75, 113.24' RT
 w/ FST & TYPE 1 FRAME CL (STD 602401, 602601 & 604001)
 RIM ELEV 567.78
 N INV 560.78
 S INV 537.48
 (2) - CONCRETE COLLARS, SPECIAL
 (SEE "CONCRETE COLLAR DETAILS")
 (2) - PR 54" PRC FLARED END SECTIONS (STD 542301)
 USFL 565.00, STA 1349+95.74, 99.28' LT
 DSFL 537.00, STA 1349+59.28, 211.05' RT

CURVE C5 DATA
 PI STA 1348+91.55
 $\Delta = 29^\circ 25' 14"$ (LT)
 $D = 2^\circ 29' 40"$
 $R = 2,296.94'$
 $T = 603.03'$
 $L = 1,179.44'$
 $E = 77.84'$
 $e = 0.059''$
 $T.R. = 39'$
 $S.E. RUN = 266'$
 $PC STA 1342+88.52$
 $PT STA 1354+67.96$
 $S.E. ATTAINED FROM$
 $STA 1340+72.19 TO 1343+77.19$
 $S.E. REMOVED FROM$
 $STA 1353+79.29 TO 1356+84.29$

SE 1/4, NW 1/4, SEC. 23 T5N R5W

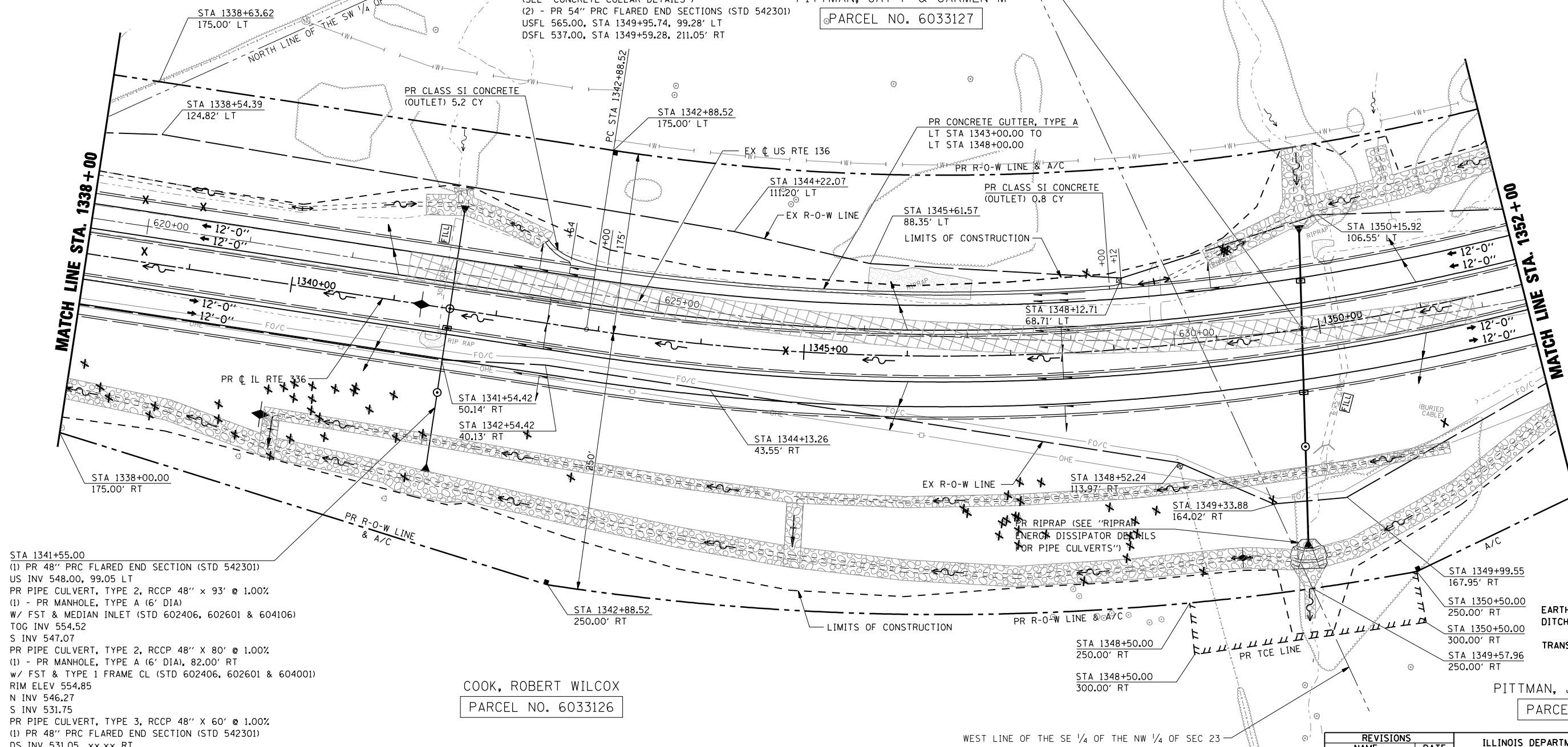
PITTMAN, JAY P & CARMEN M
 PARCEL NO. 6033127

PITTMAN, JAY P & CARMEN M
 PARCEL NO. 6033127



MATCH LINE STA. 1338+00

MATCH LINE STA. 1352+00



STA 1341+55.00
 (1) PR 48" PRC FLARED END SECTION (STD 542301)
 US INV 548.00, 99.05 LT
 PR PIPE CULVERT, TYPE 2, RCCP 48" x 93' @ 1.00%
 (1) - PR MANHOLE, TYPE A (6' DIA)
 w/ FST & MEDIAN INLET (STD 602406, 602601 & 604106)
 TOG INV 554.52
 S INV 547.07
 PR PIPE CULVERT, TYPE 2, RCCP 48" x 80' @ 1.00%
 (1) - PR MANHOLE, TYPE A (6' DIA), 82.00' RT
 w/ FST & TYPE 1 FRAME CL (STD 602406, 602601 & 604001)
 RIM ELEV 554.85
 N INV 546.27
 S INV 531.75
 PR PIPE CULVERT, TYPE 3, RCCP 48" x 60' @ 1.00%
 (1) PR 48" PRC FLARED END SECTION (STD 542301)
 DS INV 531.05, xx.xx RT

COOK, ROBERT WILCOX
 PARCEL NO. 6033126

SW 1/4, NW 1/4, SEC. 23 T5N R5W

LEGEND

- EARTH MEDIAN
- DITCH CHECK
- TRANSVERSE DRAIN

PITTMAN, JAY P & CARMEN M
 PARCEL NO. 6033128

REVISIONS	
NAME	DATE

ILLINOIS DEPARTMENT OF TRANSPORTATION
ROADWAY PLAN
IL RTE 336
STA. 1338+00 TO STA. 1352+00

SCALE: DRAWN BY: RG
 DATE: MARCH 10, 2006 CHECKED BY: JAC

DGN-SPEC
 DATE-TIME
 *REF01