

F.A.P. RTE.	SECTION	COUNTY	TOTAL SHEETS	SHEET No.
315	34-5	HANCOCK	612	182
STA. 1380+00 TO STA. 1392+50				
FED. ROAD DIST. No.	ILLINOIS	FED. AID PROJECT		

SE 1/4, NE 1/4, SEC. 23 T5N R5W

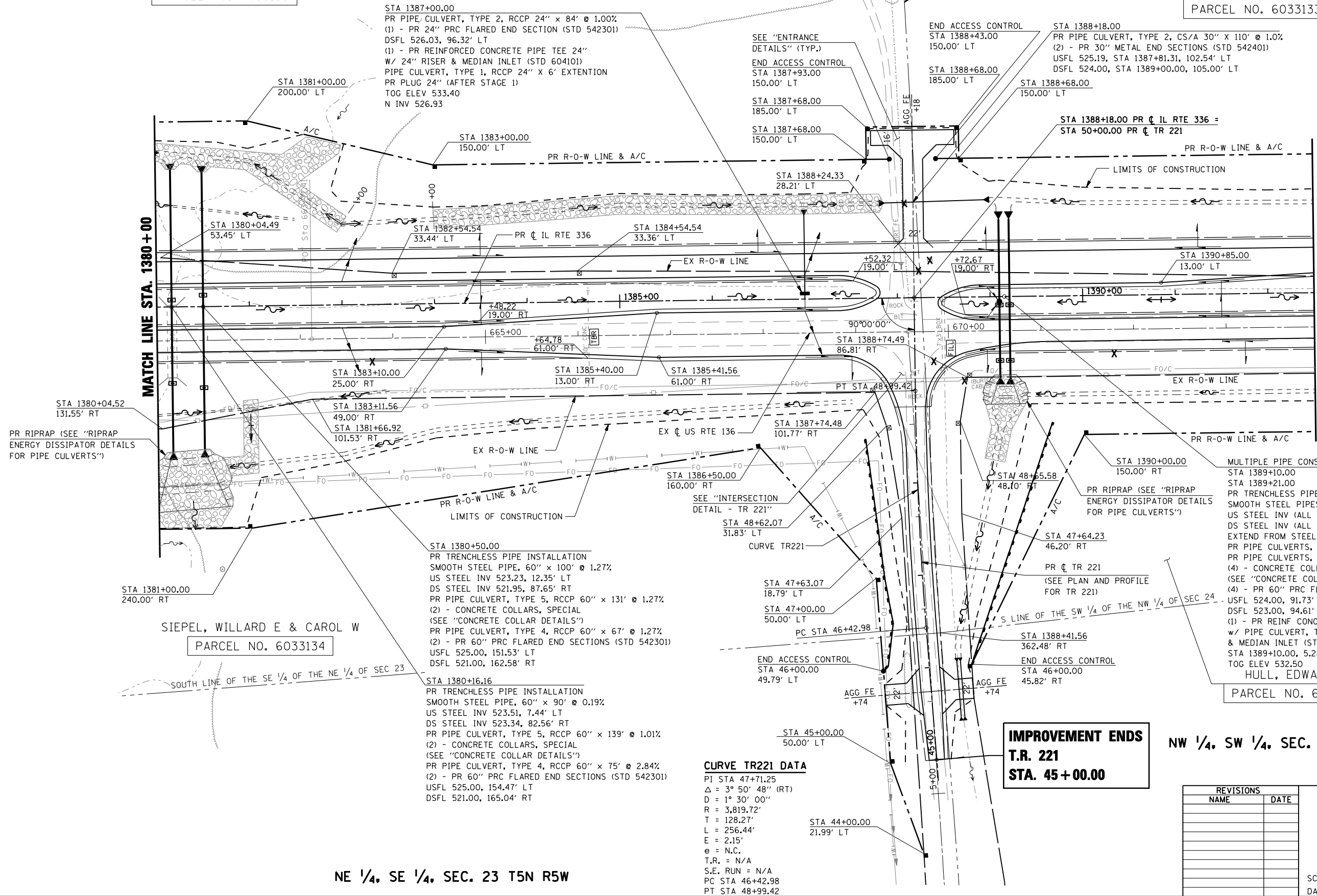
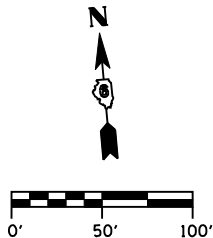
SW 1/4, NW 1/4, SEC. 24 T5N R5W

BRUNS, BRIAN K & ABIGAL L.

BRUNS, BRIAN K. & ABIGAIL L.

PARCEL NO. 6033133

PARCEL NO. 6033133



MATCH LINE STA. 1392+50

MATCH LINE STA. 1380+00

LEGEND

- EARTH MEDIAN
- DITCH CHECK
- TRANSVERSE DRAIN

- MULTIPLE PIPE CONSTRUCTION**
- STA 1389+10.00
 - STA 1389+21.00
 - PR TRENCHLESS PIPE INSTALLATION
 - SMOOTH STEEL PIPES, 2 - 60" x 60" @ 0.54%
 - US STEEL INV (ALL PIPES) 523.46, 9.00' RT
 - DS STEEL INV (ALL PIPES) 523.14, 69.00' RT
 - EXTEND FROM STEEL PIPE INVERTS w/
 - PR PIPE CULVERTS, TYPE 2, RCCP, 2 - 60" x 93" @ 0.54%
 - PR PIPE CULVERTS, TYPE 2, RCCP, 2 - 60" x 18" @ 0.54%
 - (4) - CONCRETE COLLARS, SPECIAL (SEE "CONCRETE COLLAR DETAILS")
 - (4) - PR 60" PRC FLARED END SECTIONS (STD 542301)
 - USFL 524.00, 91.73' LT
 - DSFL 523.00, 94.61' RT
 - (1) - PR REINF CONC PIPE TEE, 60" PIPE x 36" RISER w/ PIPE CULVERT, TYPE 1, RCCP 36" x 5' EXTENSION & MEDIAN INLET (STD 604106)
 - STA 1389+10.00, 5.28' RT
 - TOG ELEV 532.50
 - HULL, EDWARD C

IMPROVEMENT ENDS
T.R. 221
STA. 45+00.00

CURVE TR221 DATA
 PI STA 47+71.25
 $\Delta = 3^\circ 50' 48''$ (RT)
 $D = 1^\circ 30' 00''$
 $R = 3,819.72'$
 $T = 128.27'$
 $L = 256.44'$
 $E = 2.15'$
 $e = N.C.$
 T.R. = N/A
 S.E. RUN = N/A
 PC STA 46+42.98
 PT STA 48+99.42

SIEPEL, WILLARD E & CAROL W

PARCEL NO. 6033134

NE 1/4, SE 1/4, SEC. 23 T5N R5W

NW 1/4, SW 1/4, SEC. 24 T5N R5W

REVISIONS	
NAME	DATE

ILLINOIS DEPARTMENT OF TRANSPORTATION

ROADWAY PLAN
IL RTE 336
STA. 1380+00 TO STA. 1392+50

SCALE: _____ DRAWN BY: RG
 DATE: MARCH 10, 2006 CHECKED BY: JAC

DGN-SPEC
 DATE-TIME
 *REF01

D6 PROJECT: FILE: _____