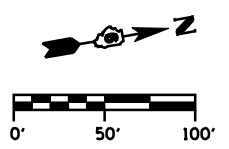


F.A.P. RTE.	SECTION	COUNTY	TOTAL SHEETS	SHEET No.
315	34-5	HANCOCK	612	188
STA. 10+00		TO STA. 13+64		
FED. ROAD DIST. No.		ILLINOIS	FED. AID PROJECT	

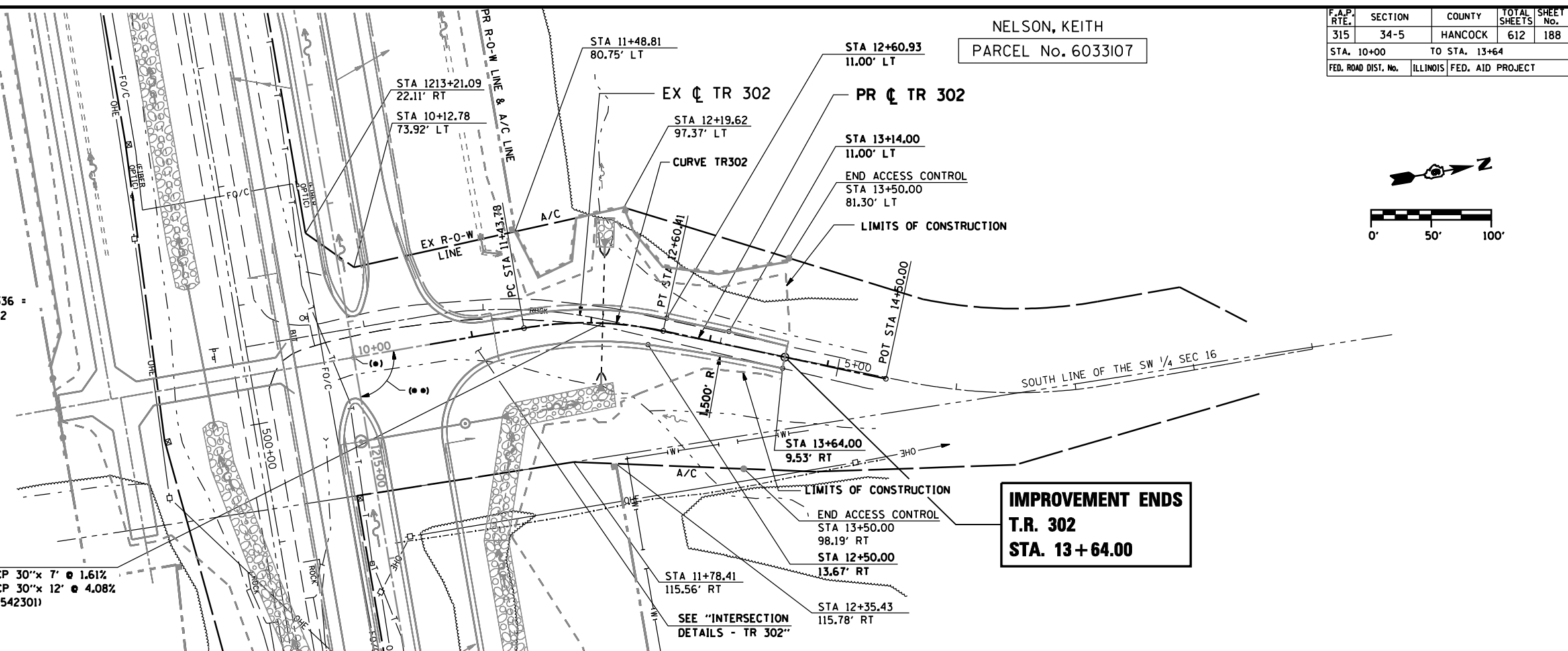
NELSON, KEITH
 PARCEL No. 6033107



CURVE TR302 DATA

PI STA 12+02.82
 $\Delta = 21^\circ 54' 36''$ (RT)
 $D = 18^\circ 47' 08''$
 $R = 305.00'$
 $T = 59.04'$
 $L = 116.63'$
 $E = 5.66'$
 $e = 0.04' /'$
 $T.R. = 27'$
 $S.E. RUN = 73'$
 PC STA 11+43.78
 PT STA 12+60.41
 S.E. ATTAINED FROM
 +3.0% @ STA 10+49.00 TO
 -4.0% @ STA 11+69.07
 (SEE "INTERSECTION DETAIL - TR 302")
 S.E. REMOVED FROM
 STA 12+36.60 TO 13+36.60

- (*) STA 1214+30.00 PR ϕ IL 336 = STA 10+00.00 PR ϕ TR 302
- (*) 90° 00' 00"



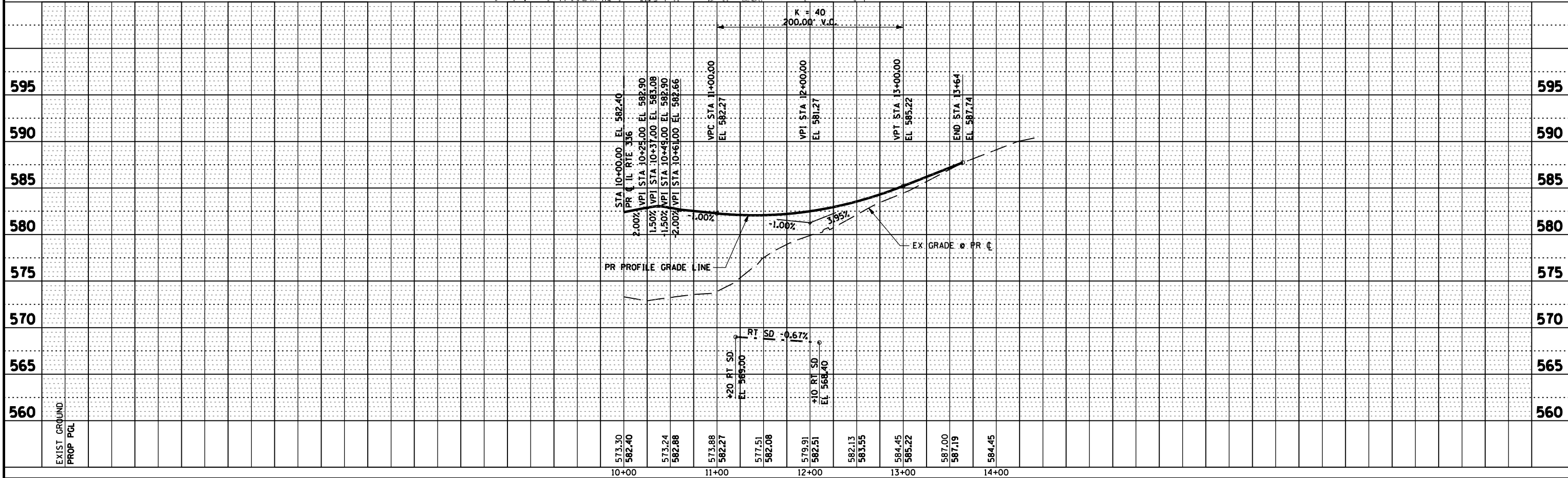
STA 12+09.55 (TR 302)
 PR PIPE CULVERT EXTENSION (LT), TYPE 1, RCCP 30"x 7' @ 1.61%
 PR PIPE CULVERT EXTENSION (RT), TYPE 1, RCCP 30"x 12' @ 4.08%
 (2) - PR 30" PRC FLARED END SECTIONS (STD 542301)
 USFL 568.23, STA 12+08.66, 69.60' RT
 DSFL 563.44, STA 12+10.64, 56.40' LT
 (2) - CONCRETE COLLARS

IMPROVEMENT ENDS
T.R. 302
STA. 13+64.00

PLAN	DATE
BY	
DATE	
BY	
DATE	
BY	
DATE	

PROFILE	DATE
BY	
DATE	
BY	
DATE	
BY	
DATE	

DGN-SPEC
 DATE-TIME
 *REF01



D6 PROJECT: FILE: