

F.A.P. RTE.	SECTION	COUNTY	TOTAL SHEETS	SHEET No.
315	34-5	HANCOCK	612	189
STA. 9+50		TO STA. 14+50		
FED. ROAD DIST. No.		ILLINOIS	FED. AID PROJECT	

NE 1/4, NE 1/4, SEC. 21 T5N R5W

LARSON, ET. AL.
PARCEL NO. 6033110

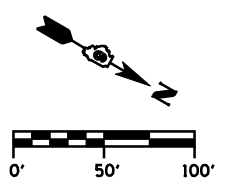
IMPROVEMENT BEGINS
C.H. 31
STA. 9+50.00

CURVE CH31-1 DATA
P.I. STA 12+83.16
Δ = 53° 40' 13" (LT)
D = 18° 47' 08"
R = 305.00'
T = 154.30'
L = 285.70'
E = 36.81'
e = 0.041'
T.R. = 27'
S.E. RUN = 73'
P.C. STA 11+29.34
P.T. STA 14+15.04
S.E. ATTAINED FROM
STA 10+53.66 TO STA 11+53.66
S.E. REMOVED FROM
STA 13+90.71 TO STA 14+90.71

PR C CH 31
WHITE, CECIL V. & ELEANOR L TR
PARCEL NO. 6033114

STA 13+25 (CH 31)
PR PIPE CULVERT, TYPE 1, CS/A 15" X 36' @ 3.50%
(2) - PR 15" METAL END SECTIONS (STD 542401)
USFL 604.40, STA 13+02.70, 65.12' RT
DSFL 603.14, STA 13+27.22, 83.91' RT

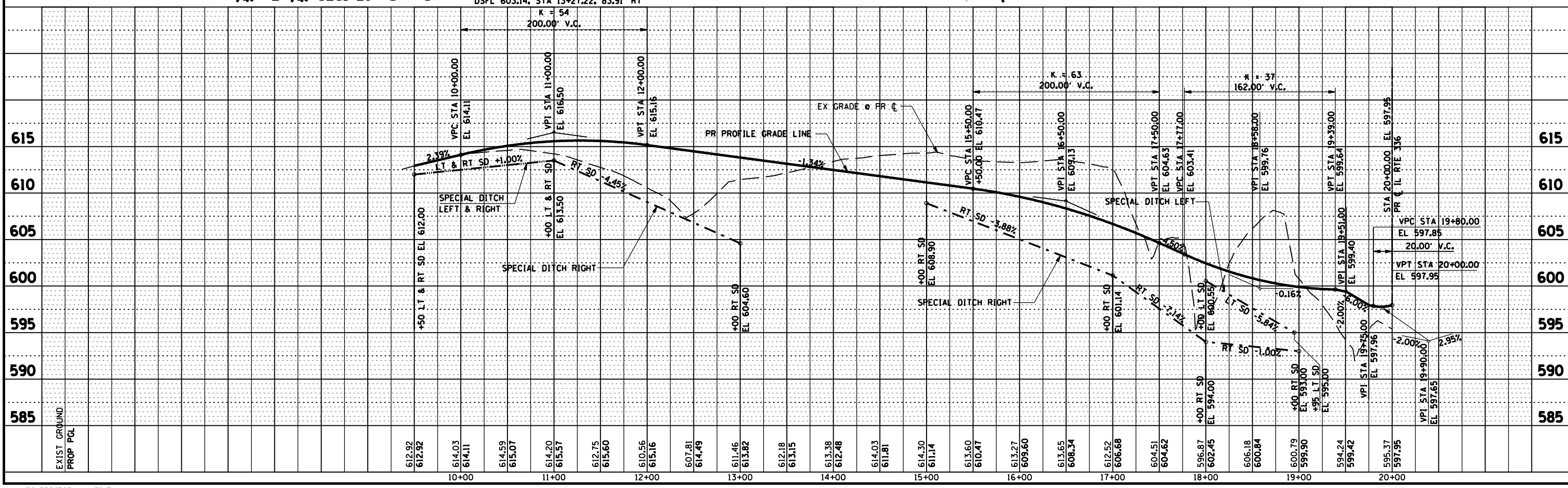
NW 1/4, NE 1/4, SEC. 21 T5N R5W



PLAN	SURVEYED	DATE
	PLOTTED	
	CHECKED	
	BY	
	NO. OF WAY CHECKED	
	CADD FILE NAME	

PROFILE	SURVEYED	DATE
	PLOTTED	
	CHECKED	
	BY	
	NOTATIONS CHRD	
	STRUCTURE	

DGN-SPEC
DATE-TIME
*REF01



D6 PROJECT: FILE: