

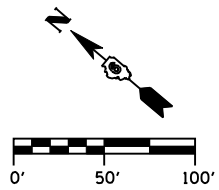
F.A.P. RTE.	SECTION	COUNTY	TOTAL SHEETS	SHEET No.
315	34-5	HANCOCK	612	192
STA. 200+00.00 TO STA. 203+51.00				
FED. ROAD DIST. No.	ILLINOIS	FED. AID PROJECT		

**CURVE PE-2A DATA**

PI STA 201+46.07  
 $\Delta = 68^\circ 04' 53''$  (LT)  
 $D = 76^\circ 23' 40''$   
 $R = 75.00'$   
 $T = 50.67'$   
 $L = 89.12'$   
 $E = 15.51'$   
 $e = NC$   
 P.C. STA 200+95.40  
 P.T. STA 201+84.52

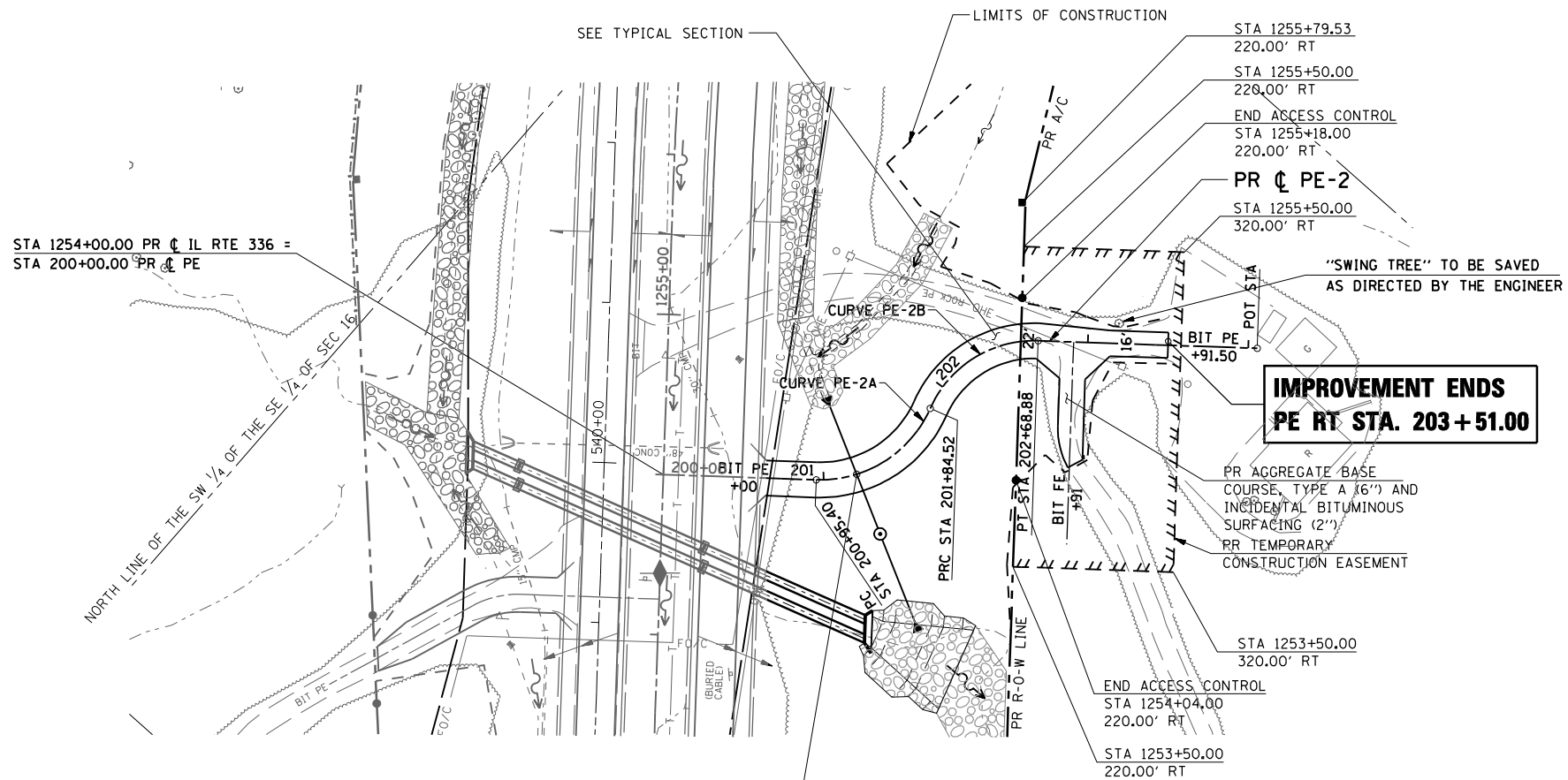
**CURVE PE-2B DATA**

PI STA 202+32.48  
 $\Delta = 68^\circ 04' 53''$  (RT)  
 $D = 80^\circ 41' 54''$   
 $R = 71.00'$   
 $T = 47.96'$   
 $L = 84.37'$   
 $E = 14.68'$   
 $e = NC$   
 P.R.C. STA 201+84.52  
 P.T. STA 202+68.88

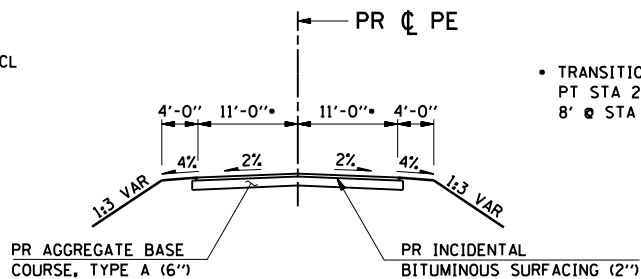


DAVIS, KEVIN R & ELISA J

PARCEL NO. 6033115

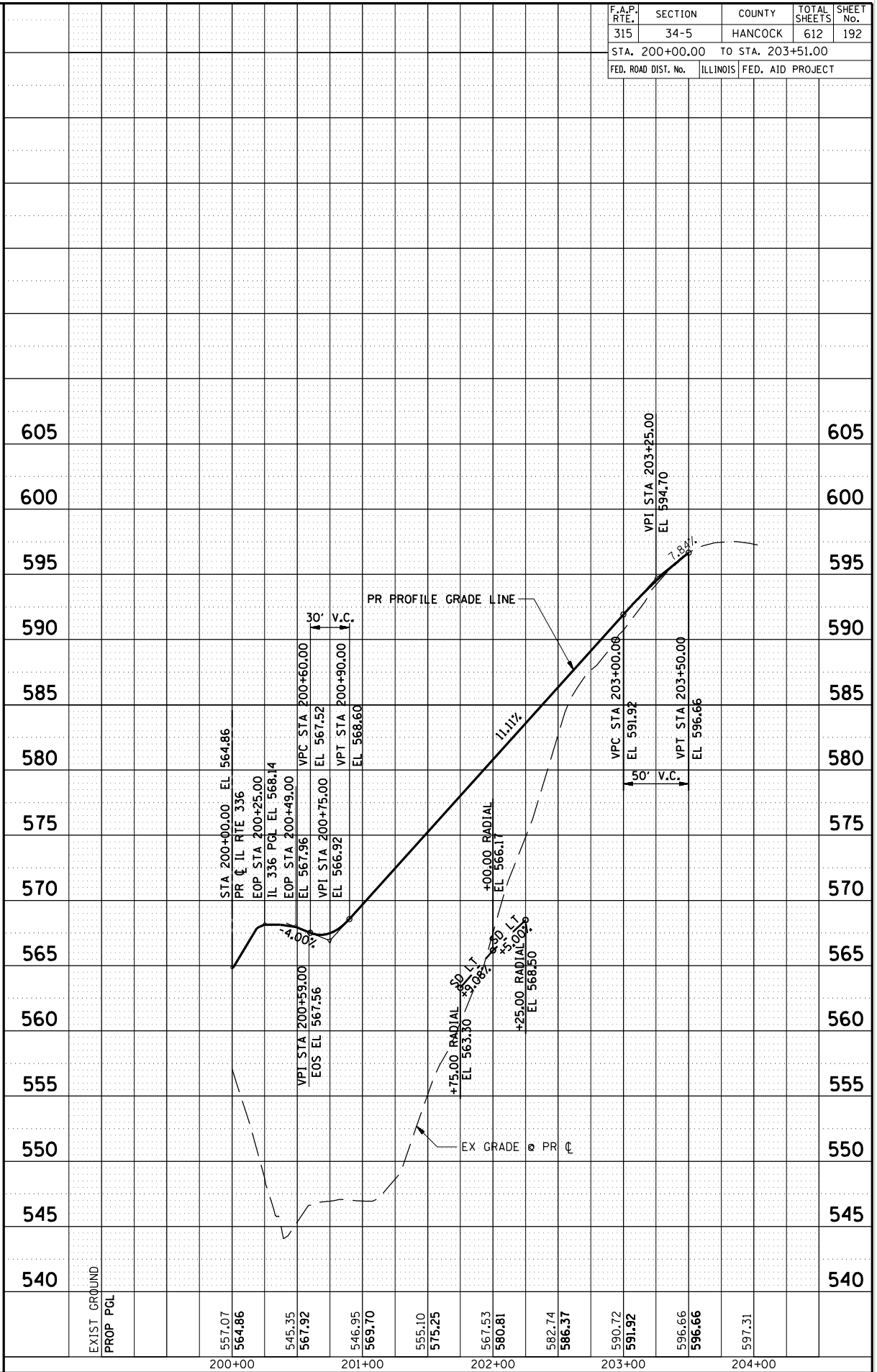


STA 201+21.00 (SKEW  $3^\circ 54' 00''$  FWD RT @ LOCAL TANGENT)  
 PR PIPE CULVERT, TYPE 2, RCCP 24"x 83' @ 1.00%  
 PR PIPE CULVERT, TYPE 4, RCCP 24"x 57' @ 1.00%  
 (2) - PR 24" PRC FLARED END SECTIONS (STD 542301)  
 USFL 561.80, STA 201+10.04, 51.00' LT  
 DSFL 542.00, STA 201+23.98, 105.00' RT  
 (1) - PR MANHOLE, TYPE A (5' DIA) w/ FST & TYPE 1 FRAME CL  
 STA 201+22.78, 39.50' RT (STD 602401, 602601 & 604001)  
 RIM ELEV 564.65  
 N INV 560.93  
 S INV 542.63



**TYPICAL SECTION PE-2**

(SEE CROSS-SECTIONS FOR ADDITIONAL INFORMATION)



\*DGN-SPEC\*  
 \*DATE-TIME\*  
 \*REF01