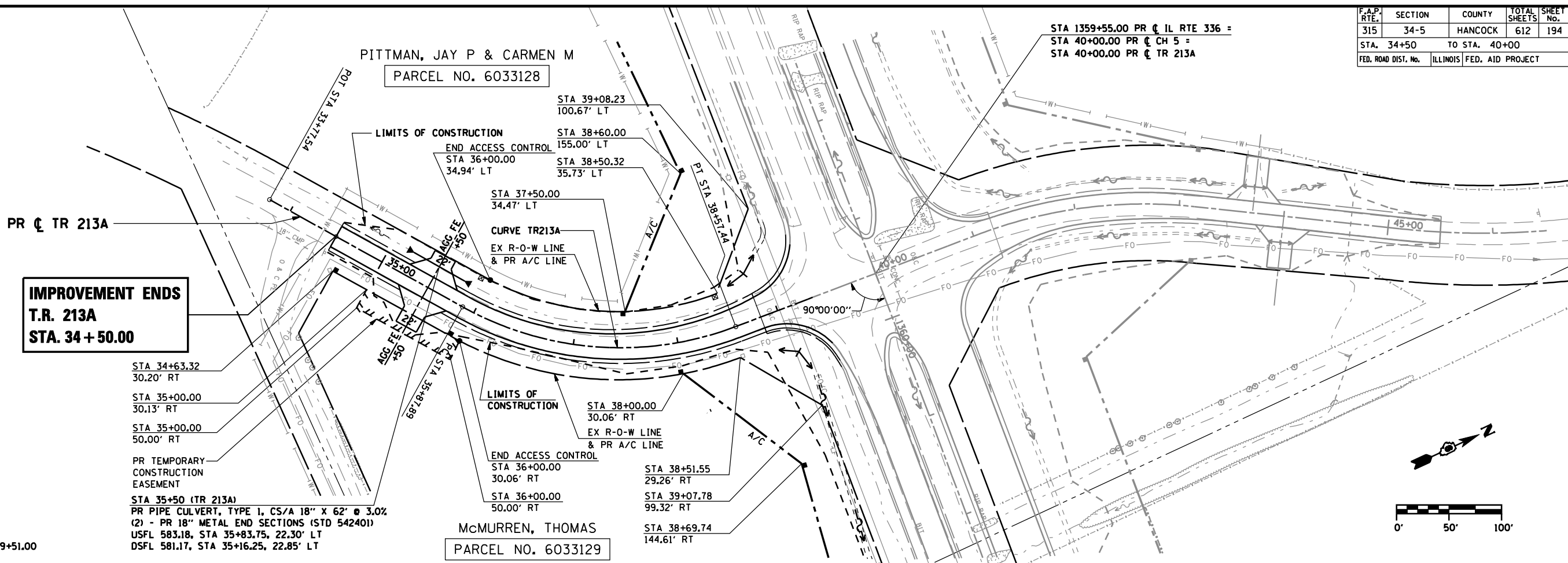


F.A.P. RTE.	SECTION	COUNTY	TOTAL SHEETS	SHEET No.
315	34-5	HANCOCK	612	194
STA. 34+50 TO STA. 40+00				
FED. ROAD DIST. No.		ILLINOIS	FED. AID PROJECT	

PLAN	DATE
SURVEYED	
PLOTTED	
CHECKED	
BY	
NO.	

PROFILE	DATE
SURVEYED	
PLOTTED	
CHECKED	
BY	
NO.	

\*DGN-SPEC\*  
 \*DATE-TIME\*  
 \*REF01



**IMPROVEMENT ENDS**  
**T.R. 213A**  
**STA. 34 + 50.00**

**CURVE TR213A DATA**

PI STA 37+31.87  
 Δ = 49° 51' 55'' (LT)  
 D = 18° 30' 00''  
 R = 309.71'  
 T = 143.98'  
 L = 269.54'  
 E = 31.83'  
 e = 4.0%  
 T.R. = 27'  
 S.E. RUN = 73'  
 PC STA 35+87.89  
 PT STA 38+57.44  
 S.E. ATTAINED FROM  
 STA 35+12.22 TO STA 36+12.22  
 S.E. REMOVED FROM  
 STA 38+33.11 TO ±0.3% @ STA 39+51.00

STA 34+63.32  
 30.20' RT  
 STA 35+00.00  
 30.13' RT  
 STA 35+00.00  
 50.00' RT  
 PR TEMPORARY  
 CONSTRUCTION  
 EASEMENT  
 STA 35+50 (TR 213A)  
 PR PIPE CULVERT, TYPE I, CS/A 18" x 62" @ 3.0%  
 (2) - PR 18" METAL END SECTIONS (STD 542401)  
 USFL 583.18, STA 35+83.75, 22.30' LT  
 DSFL 581.17, STA 35+16.25, 22.85' LT

LIMITS OF CONSTRUCTION  
 END ACCESS CONTROL  
 STA 36+00.00  
 30.06' RT  
 STA 36+00.00  
 50.00' RT  
 STA 38+00.00  
 30.06' RT  
 EX R-O-W LINE  
 & PR A/C LINE  
 STA 38+51.55  
 29.26' RT  
 STA 39+07.78  
 99.32' RT  
 STA 38+69.74  
 144.61' RT

McMURREN, THOMAS  
 PARCEL NO. 6033129

STA 1359+55.00 PR C IL RTE 336 =  
 STA 40+00.00 PR C CH 5 =  
 STA 40+00.00 PR C TR 213A

