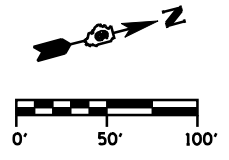


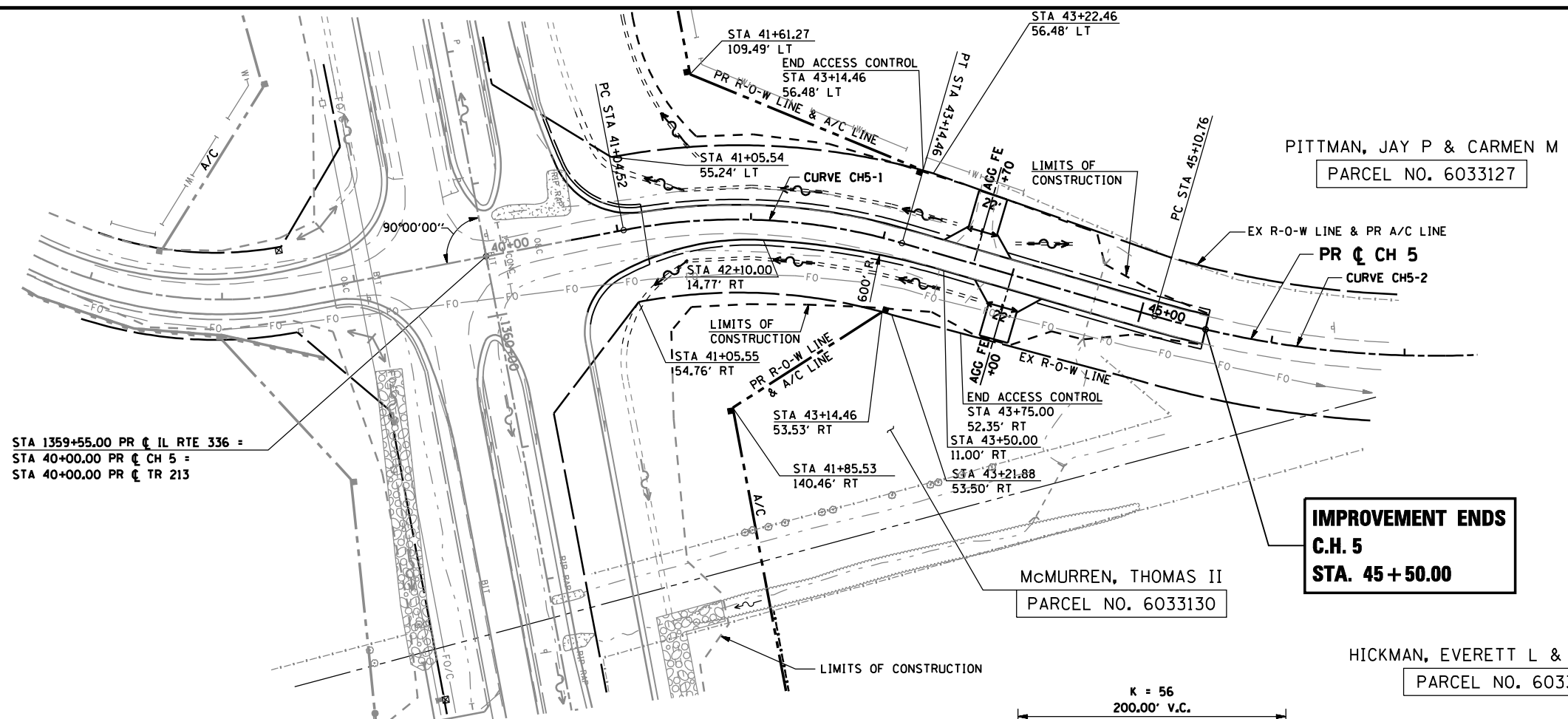
F.A.P. RTE.	SECTION	COUNTY	TOTAL SHEETS	SHEET No.
315	34-5	HANCOCK	612	195
STA. 40+00 TO STA. 45+50		FED. ROAD DIST. No. ILLINOIS FED. AID PROJECT		



PLAN	SURVEYED	DATE
	PLOTTED	
	CHECKED	
	BY	
	NO. OF WAY CHECKED	
	CADD FILE NAME	

PROFILE	SURVEYED	DATE
	PLOTTED	
	CHECKED	
	BY	
	NO. OF WAY CHECKED	
	STRUCTURE NOTATIONS CHRD	

DGN-SPEC
DATE-TIME
*REF01

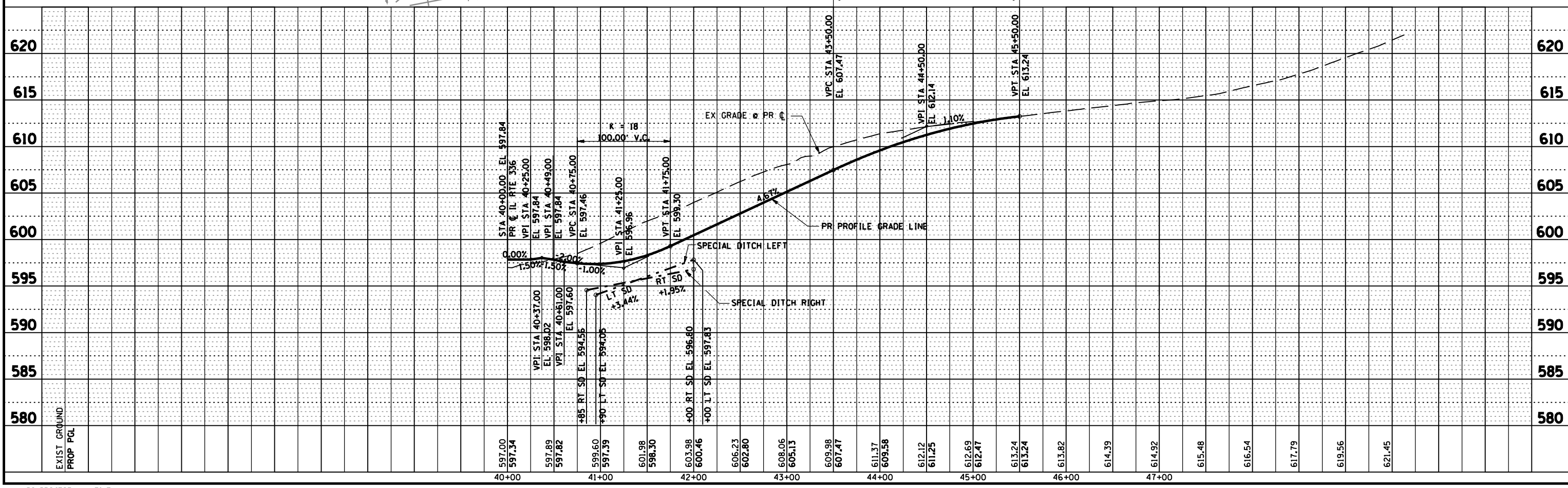


CURVE CH5-1 DATA

PI STA 42+11.47
 $\Delta = 26^\circ 56' 33''$ (RT)
 $D = 12^\circ 50' 00''$
 $R = 446.46'$
 $T = 106.95'$
 $L = 209.94'$
 $E = 12.63'$
 $e = 0.037'/'$
 $T.R. = 27'$
 $S.E. RUN = 67'$
 $PC STA 41+04.52$
 $PT STA 43+14.46$
 $S.E. ATTAINED FROM \pm 0.3\% e$
 $STA 40+49.00 TO -3.7\% e$
 $STA 41+26.85$
 $S.E. REMOVED FROM$
 $STA 42+92.13 TO STA 43+86.13$

CURVE CH5-2 DATA

PI STA 47+19.78
 $\Delta = 31^\circ 08' 48''$ (LT)
 $D = 7^\circ 38' 22''$
 $R = 750.00'$
 $T = 209.03'$
 $L = 407.71'$
 $E = 28.58'$
 $e = 0.05'/'$
 $T.R. = N/A$
 $S.E. RUN = N/A$
 $PC STA 45+10.76$
 $PT STA 49+18.47$



D6 PROJECT: FILE: