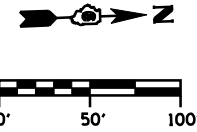


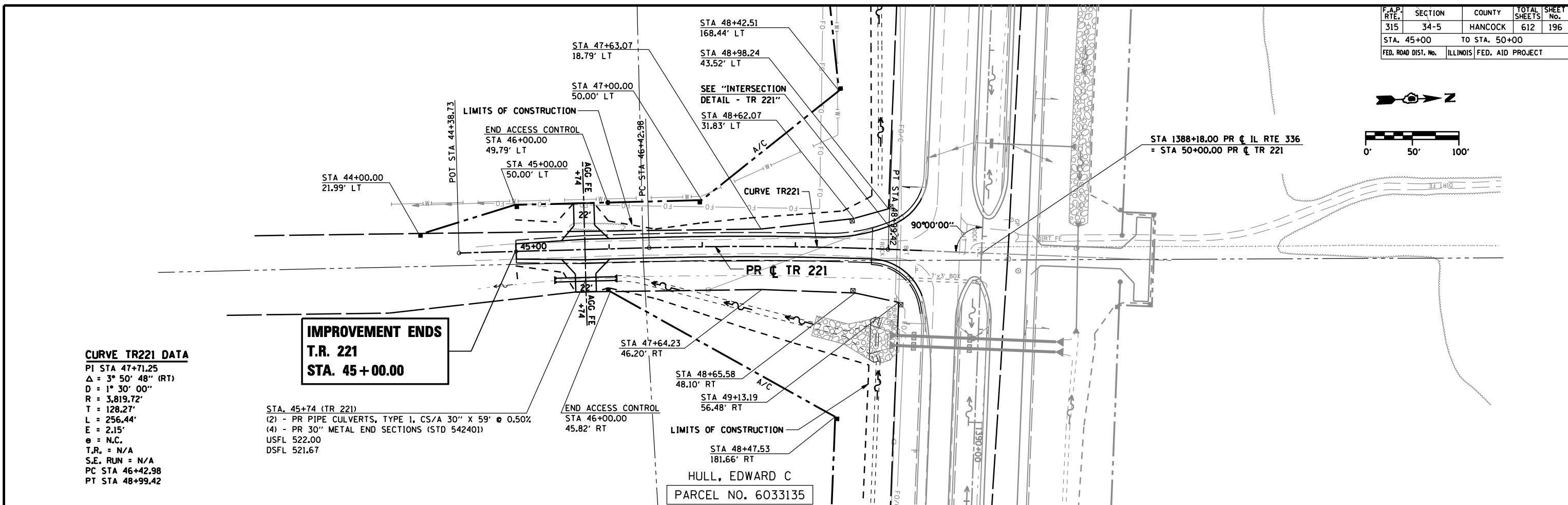
F.A.P. RTE.	SECTION	COUNTY	TOTAL SHEETS	SHEET No.
315	34-5	HANCOCK	612	196
STA. 45+00		TO STA. 50+00		
FED. ROAD DIST. No.		ILLINOIS	FED. AID PROJECT	



PLAN	DATE
SUBMITTED	
PLOTTED	
CHECKED	
BY	
NO. OF WAYS CHECKED	
CADD FILE NAME	

PROFILE	DATE
SUBMITTED	
PLOTTED	
CHECKED	
BY	
NOTATIONS CHD	

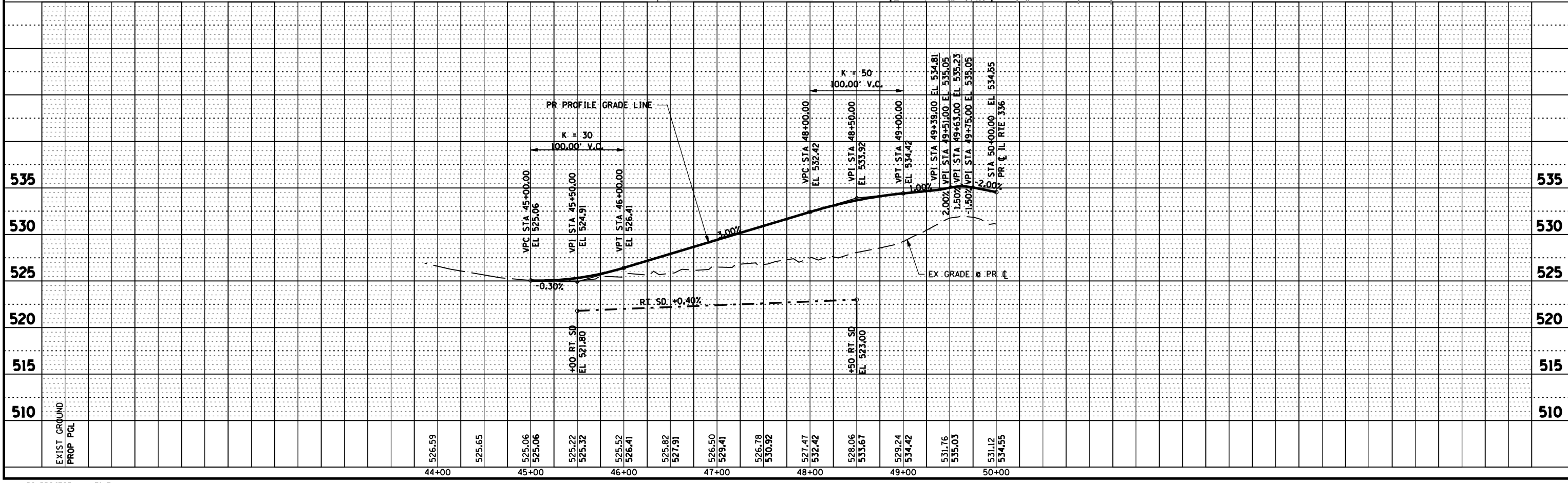
\*DGN-SPEC\*  
\*DATE-TIME\*  
\*REF01



**CURVE TR221 DATA**  
 PI STA 47+71.25  
 $\Delta = 3^\circ 50' 48''$  (RT)  
 $D = 1^\circ 30' 00''$   
 $R = 3,819.72'$   
 $T = 128.27'$   
 $L = 256.44'$   
 $E = 2.15'$   
 $e = N.C.$   
 $T.R. = N/A$   
 $S.E. RUN = N/A$   
 $PC STA 46+42.98$   
 $PT STA 48+99.42$

**IMPROVEMENT ENDS**  
**T.R. 221**  
**STA. 45+00.00**

STA. 45+74 (TR 221)  
 (2) - PR PIPE CULVERTS, TYPE 1, CS/A 30" X 59" @ 0.50%  
 (4) - PR 30" METAL END SECTIONS (STD 542401)  
 USFL 522.00  
 DSFL 521.67



D6 PROJECT: FILE: