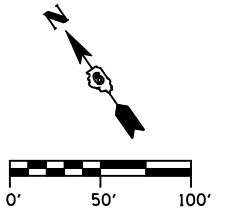


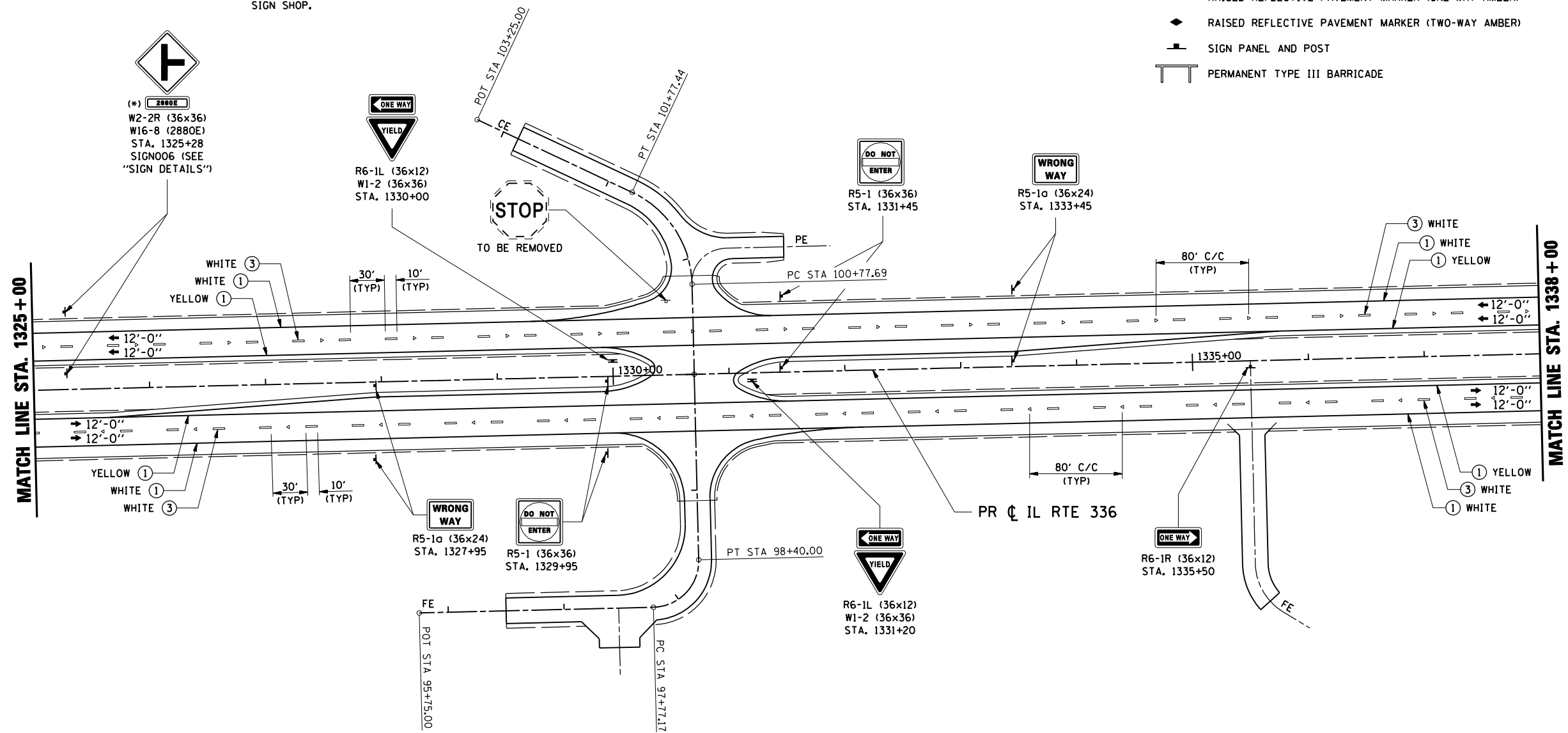
F.A.P. RTE.	SECTION	COUNTY	TOTAL SHEETS	SHEET No.
315	34-5	HANCOCK	612	233
STA. 1325+00 TO STA. 1338+00		FED. ROAD DIST. No. ILLINOIS FED. AID PROJECT		

**LEGEND**

- ① POLYUREA PAVEMENT MARKING TYPE II - LINE 5"
- ② POLYUREA PAVEMENT MARKING TYPE II - LINE 6"
- ③ PREFORMED PLASTIC PAVEMENT MARKING, TYPE B - LINE 5"
- ④ PREFORMED PLASTIC PAVEMENT MARKING, TYPE B - LINE 24"
- ⑤ POLYUREA PAVEMENT MARKING, TYPE II - LETTERS & SYMBOLS
- ◁ RAISED REFLECTIVE PAVEMENT MARKER (ONE-WAY CRYSTAL)
- ◄ RAISED REFLECTIVE PAVEMENT MARKER (ONE-WAY AMBER)
- ◆ RAISED REFLECTIVE PAVEMENT MARKER (TWO-WAY AMBER)
- SIGN PANEL AND POST
- PERMANENT TYPE III BARRICADE



(\* ) PLATE TO BE FURNISHED AND INSTALLED LATER BY DISTRICT SIGN SHOP.



REVISIONS	
NAME	DATE

ILLINOIS DEPARTMENT OF TRANSPORTATION  
**PAVEMENT MARKING & SIGNING PLAN**  
**IL RTE 336**  
**STA. 1325+00 TO STA. 1338+00**  
 SCALE: DATE: MARCH 10, 2006  
 DRAWN BY: RG  
 CHECKED BY: JAC