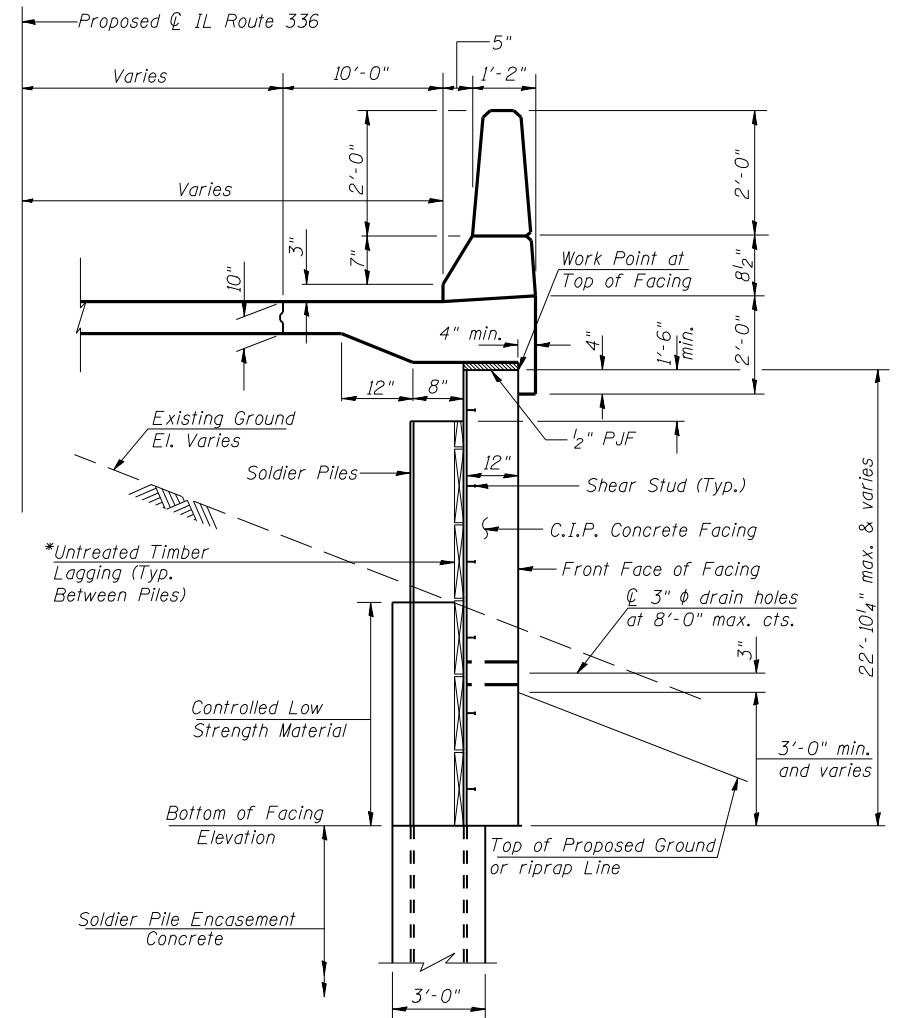


TYPICAL CROSS SECTION
Sta. 1294+80 to Sta. 1297+00

**3'-0" ϕ W24 piles
2'-6" ϕ W21 piles
2'-0" ϕ W16 piles



TYPICAL CROSS SECTION
Sta. 1293+50 to Sta. 1294+80

WORK POINTS AND WALL ELEVATIONS

WP No.	CL Rte. IL 336 Station	Offset Rt. (ft.)	Top C.I.P. Facing Elev.	Bott. C.I.P. Facing Elev.	Top/Pile Elev.
1	1293+50.00	32.19	539.77	535.77	538.27
2	1293+82.50	32.19	539.97	533.05	538.47
3	1294+15.00	32.19	540.19	526.10	538.69
4	1294+47.50	32.19	540.43	521.13	538.93
5	1294+80.00	32.19	540.69	517.84/521.00	539.19
6	1295+12.50	32.19	540.96	526.00	539.46
7	1295+45.00	32.19	541.21	531.50	539.71
8	1295+77.50	32.19	541.42	533.50	539.92
9	1296+09.88	32.20	541.60	536.00	540.10
10	1296+41.88	32.56	541.81	539.00	540.81
11	1296+73.87	33.42	542.13	540.00	541.13
12	1297+00.00	34.49	542.37	540.00	541.37

*Timber Lagging to be placed from top of excavation down in excavated areas and from existing ground up in compacted fill areas.

ILLINOIS DEPARTMENT OF TRANSPORTATION	
SHEET TITLE STRUCTURE NUMBER 034-2521 STRUCTURE NUMBER 034-2521	
PROJECT FAP ROUTE 315 (IL 336/US 136) SECTION 34-5(5B) HANCOCK COUNTY STA. 1293+50.00(R) TO STA. 1297+00.00(R) STRUCTURE NUMBER 034-2521	PROJECT NO. 02076-R SCALE 9450 DATE 12/22/05 DRAWN BY TFG CHECKED BY BD/MCB DRAWING NO.
COOMBE-BLOXDORF P.C. Engineers/Land Surveyors Springfield, Illinois Design Firm License No. 184-002703	10 OF 18 SHTS