



SOIL BORING LOG

Page 1 of 1
Date 2/20/04

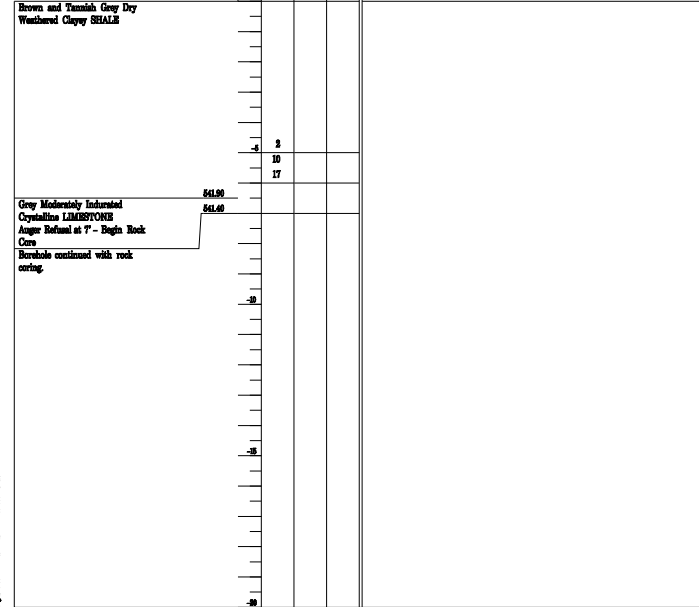
ROUTE FAP 302 (IL 336) DESCRIPTION IL 336 Retaining Wall at the Lemons River LOGGED BY M. Tappan

SECTION 34-5 LOCATION SW 1/4 SEC. 16, TWP. 5 N, RNG. 6 W, 4 PM

COUNTY Hancock DRILLING METHOD HSA HAMMER TYPE 140 # Axle

STRUCT. NO. 034-2014
Station 1286+25
BORING NO. 88
Station 1286+29
Other 27.08 ft
Ground Surface Elev. 548.4 ft

Surface Water Elev. 510.0 ft
Stream Bed Elev. No Data ft
Groundwater Elev.:
No Hammer ft
Flux Recorder ft
Up on Completion Corded ft
After Hrs. Plugged ft



The Unconfined Compressive Strength (UCS) Failure Mode is indicated by (S-Debris, S-Shear, P-Pneumometer, E-Reluctant)
Abbreviations W.O.H - Sampler Advanced By Weight of Hammer, W.O.P - Advanced by Weight of Pipe, B.S. - Borehole Sealing
The SPT (N) value is the sum of the last two blow values in each sampling zone (ASTM D-1586, Rev. 8-99)



ROCK CORE LOG

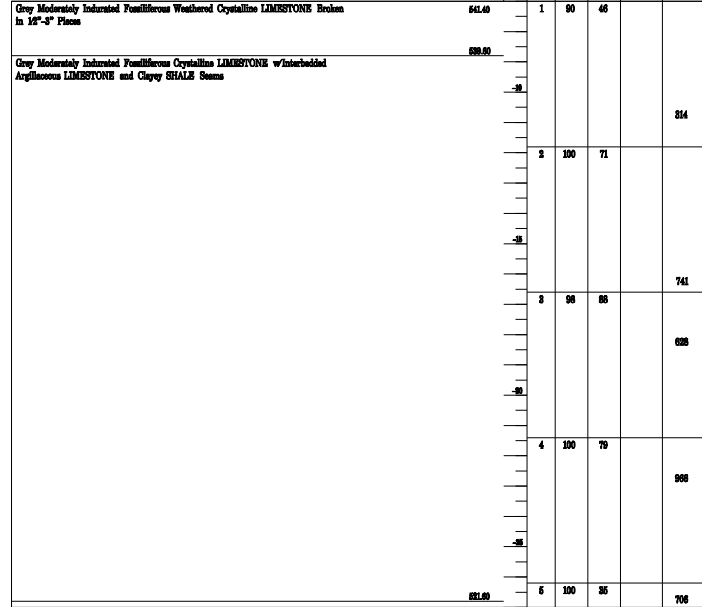
Page 1 of 1
Date 2/20/04

ROUTE FAP 302 (IL 336) DESCRIPTION IL 336 Retaining Wall at the Lemons River LOGGED BY M. Tappan

SECTION 34-5 LOCATION SW 1/4 SEC. 16, TWP. 5 N, RNG. 6 W, 4 PM

COUNTY Hancock CORING METHOD Christensen NCB Wireline w/Water

STRUCT. NO. 034-2014 CORING BARREL TYPE & SIZE NCB
Station 1286+25
BORING NO. 88 Core Diameter 1.50 in
Station 1286+29 Top of Rock Elev. 548.40 ft
Other 27.08 ft Begin Core Elev. 541.40 ft
Ground Surface Elev. 548.4 ft



Color pictures of the cores On Request
Cores will be stored for examination until 5 Years after Construction
The "Strength" column represents the uniaxial compressive strength of the core sample (ASTM D-3988)

HSS, form 136 (Rev. 8-99)



ROCK CORE LOG

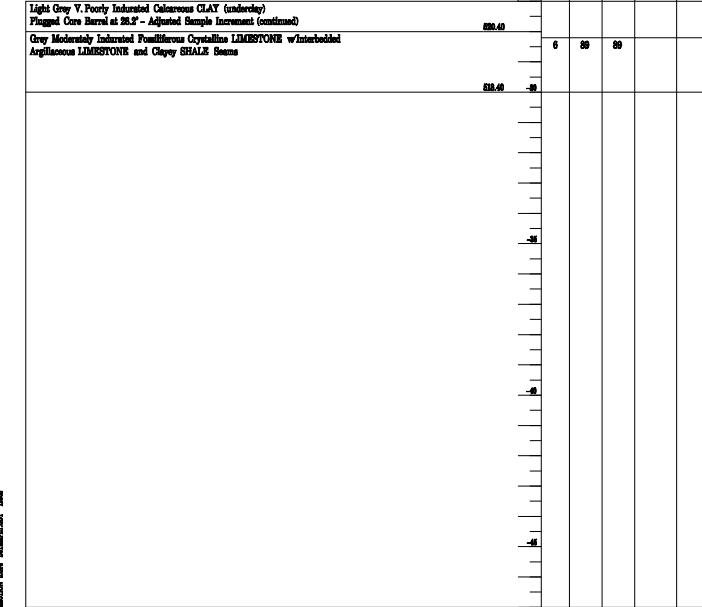
Page 1 of 1
Date 2/20/04

ROUTE FAP 302 (IL 336) DESCRIPTION IL 336 Retaining Wall at the Lemons River LOGGED BY M. Tappan

SECTION 34-5 LOCATION SW 1/4 SEC. 16, TWP. 5 N, RNG. 6 W, 4 PM

COUNTY Hancock CORING METHOD Christensen NCB Wireline w/Water

STRUCT. NO. 034-2014 CORING BARREL TYPE & SIZE NCB
Station 1286+25
BORING NO. 88 Core Diameter 1.50 in
Station 1286+29 Top of Rock Elev. 548.40 ft
Other 27.08 ft Begin Core Elev. 541.40 ft
Ground Surface Elev. 548.4 ft



Color pictures of the cores On Request
Cores will be stored for examination until 5 Years after Construction
The "Strength" column represents the uniaxial compressive strength of the core sample (ASTM D-3988)

HSS, form 136 (Rev. 8-99)

ILLINOIS DEPARTMENT OF TRANSPORTATION	
SHEET TITLE STRUCTURE NUMBER 037-0069 STRUCTURE NUMBER 037-0069	
PROJECT FAP ROUTE 315 (IL 336/US 136) SECTION 34-5(5B) HANCOCK COUNTY STA. 1293+50.00(R) TO STA. 1297+00.00(R) STRUCTURE NUMBER 034-2521	PROJECT NO. 02076-R SCALE 9450 DATE 12/22/05 DRAWN BY TFG CHECKED BY BD/MCB DRAWING NO. 18 OF 18 SHTS
COOMBE-BLOXDORF P.C. Engineers / Land Surveyors Springfield, Illinois Design Firm License No. 184-002703	