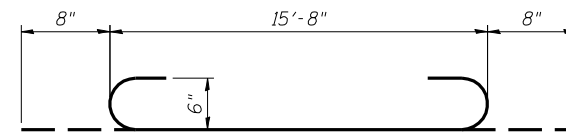
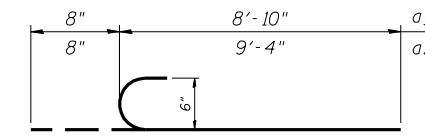


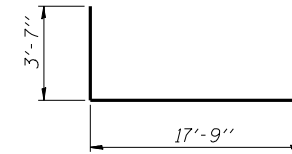
SECTION THRU BOX AT COLLAR



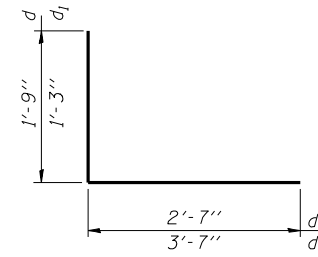
BAR a



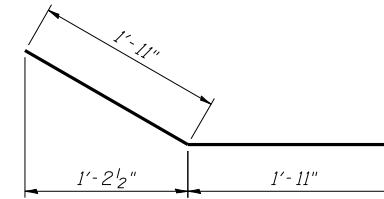
BARS a3 & a4



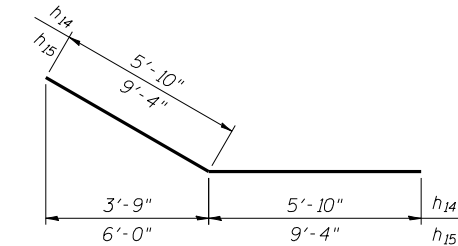
BAR a8



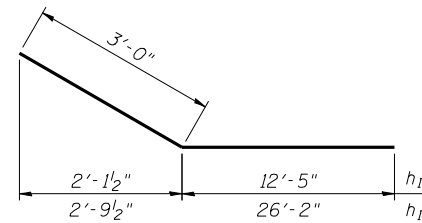
BARS d & d1



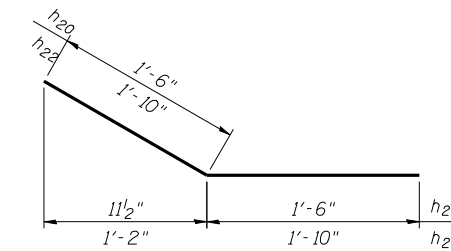
BAR h13



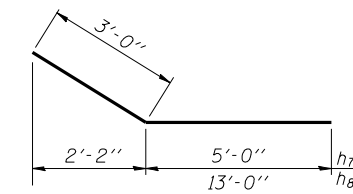
BARS h14 & h15



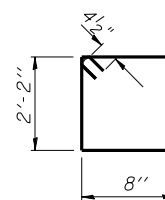
BARS h17 & h18



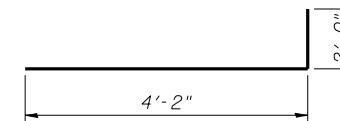
BARS h20 & h22



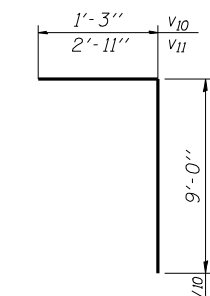
BARS h7 & h8



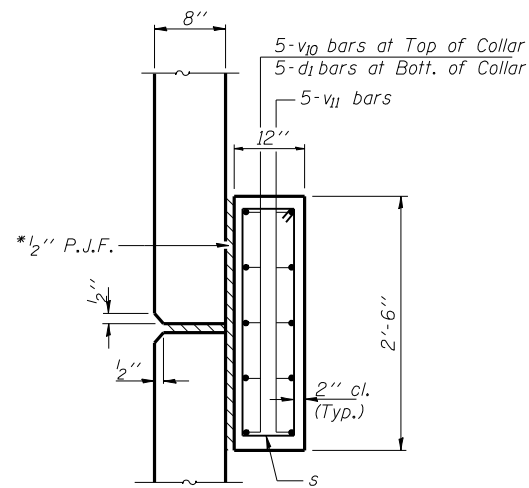
BAR s



BAR v3

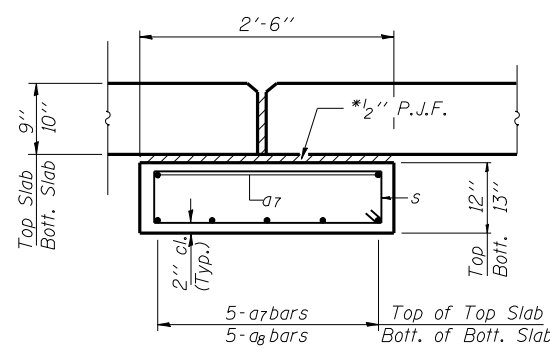


BARS v10 & v11



SECTION D-D

Showing Collar Reinforcement



SECTION E-E

Showing Collar Reinforcement

BILL OF MATERIAL
EACH COLLAR

Bar	No.	Size	Length	Shape
a7	9	#8	17'-9"	—
a8	5	#8	24'-11"	—
d1	10	#8	4'-10"	J
s	54	#4	6'-5"	—
v10	10	#8	10'-3"	—
v11	10	#8	13'-2"	—
Concrete Box Culverts		Cu. Yd.	5.3	
Reinforcement Bars		Pound	1740	

NOTE: There are 3 collars at this structure:
1 at North extension-Stage 3
2 at South extension-Stage 2

*Cost included with Concrete Box Culverts