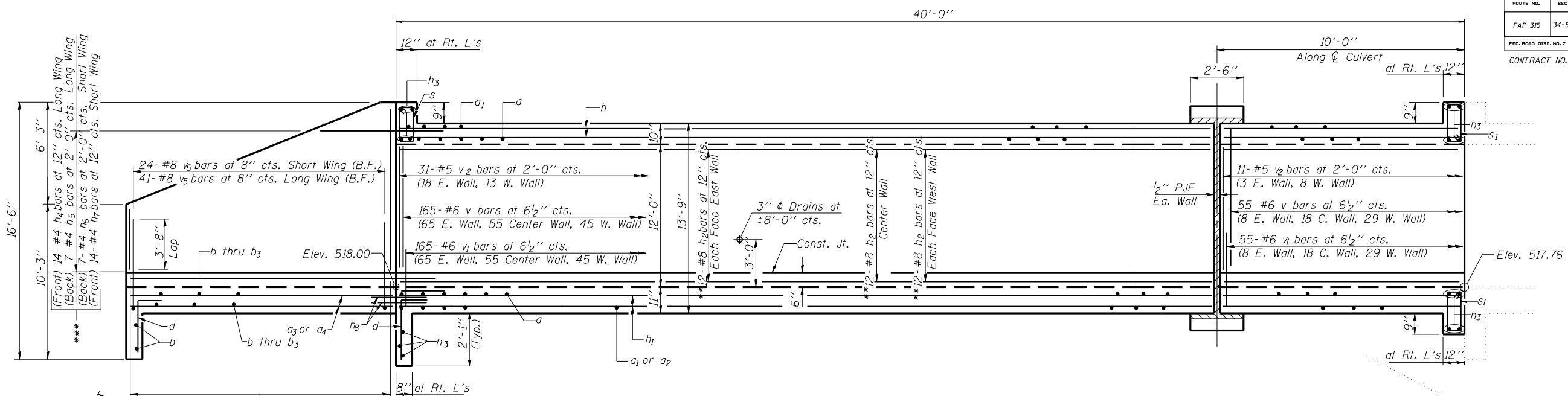


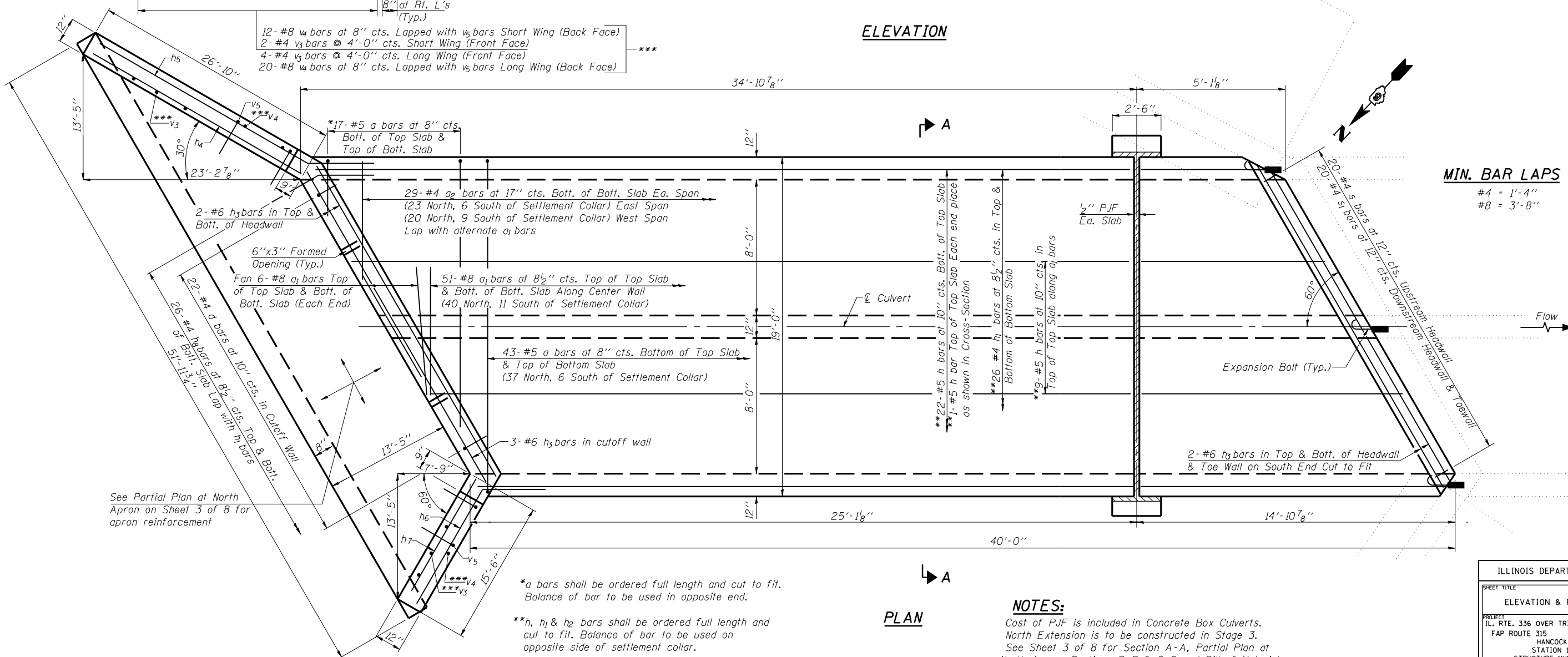
ROUTE NO.	SECTION	COUNTY	TOTAL SHEETS	SHEET NO.
FAP 315	34-5(5B)	HANCOCK	612	279
FED. ROAD DIST. NO. 7		ILLINOIS	FED. AID PROJECT	

SHEET NO. 2
8 SHEETS

CONTRACT NO. 72682



ELEVATION



PLAN

MIN. BAR LAPS
#4 = 1'-4"
#8 = 3'-8"

NOTES:

Cost of P.J.F is included in Concrete Box Culverts.
North Extension is to be constructed in Stage 3.
See Sheet 3 of 8 for Section A-A, Partial Plan at North Apron, Sections B-B & C-C and Bill of Material.
See Sheet 7 of 8 for Bar Details and Settlement Collar Details.
See Section A-A on Sheet 3 of 8 for placement of v_1 , v_2 and v_3 bars.

*a bars shall be ordered full length and cut to fit. Balance of bar to be used in opposite end.
**h, h_1 & h_2 bars shall be ordered full length and cut to fit. Balance of bar to be used on opposite side of settlement collar.
*** v_3 and v_4 bars shall be ordered full length and cut to fit. Balance of bar to be used in opposite end of wingwall. Horizontal wingwall bars shall be cut to fit.

PLOT DATE = 5/1/2006
 FILE NAME = 034-7001-02.dwg
 PLOT SCALE = 0.250000
 USER NAME = laughtlinr1

ILLINOIS DEPARTMENT OF TRANSPORTATION	
SHEET TITLE ELEVATION & PLAN-NORTH EXTENSION	
PROJECT IL. RTE. 336 OVER TRIB TO LA MOINE RIVER	PROJECT NO. 02076-4
FAP ROUTE 315 SECTION 34-5 (5B)	SCALE AS SHOWN
HANCOCK COUNTY	DATE 03/20/06
STATION 1318+53.88	DRAWN BY TFG
STRUCTURE NUMBER 034-7001	CHECKED BY CME/MCB
COOMBE-BLOXDORF P.C. Engineers/Land Surveyors Springfield, Illinois	2
Design Firm License No. 184-002708	OF 8 SHTS