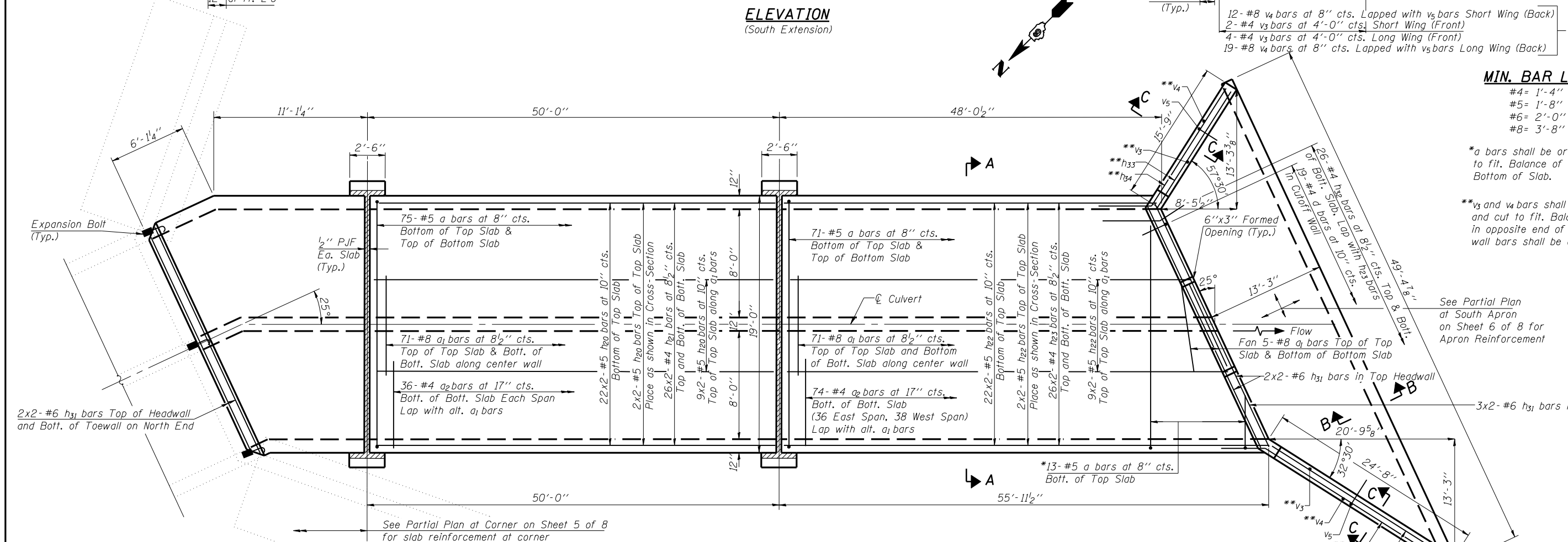
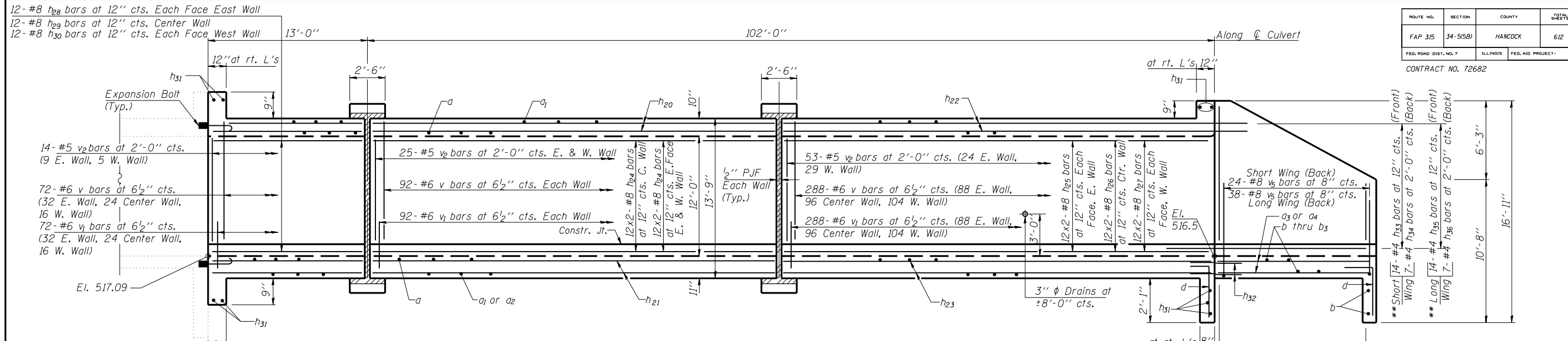


ROUTE NO.	SECTION	COUNTY	TOTAL SHEETS	SHEET NO.
FAP 315	34-5(5B)	HANCOCK	612	281
FED. ROAD DIST. NO. 7		ILLINOIS	FED. AID PROJECT	

CONTRACT NO. 72682



MIN. BAR LAPS

- #4 = 1'-4"
- #5 = 1'-8"
- #6 = 2'-0"
- #8 = 3'-8"

*a bars shall be ordered full length and cut to fit. Balance of bar to be used in Top of Bottom of Slab.

** v_3 and v_4 bars shall be ordered full length and cut to fit. Balance of bar to be used in opposite end of wing. Horizontal wing-wall bars shall be cut to fit.

NOTES:
 Cost of P.J.F. is included in Concrete Box Culverts.
 South Extension is to be constructed in Stage 1.
 See Sheet 5 of 8 for Partial Plan at Corner.
 See Sheet 6 of 8 for Sections A-A, B-B and C-C, Partial Plan at South Apron and Bill of Material.
 See Sheet 7 of 8 for Bar Details and Settlement Collar Details.
 See Section A-A on Sheet 6 of 8 for placement of v, v_1 and v_2 bars.
 Bar indicated thus 22x2-#5 bars indicates 22 lines of bars with 2 lengths per line.
 Place at least one 3" ϕ drain in each exterior wall segment.

ILLINOIS DEPARTMENT OF TRANSPORTATION	
SHEET TITLE	
ELEVATION & PLAN-SOUTH EXTENSION	
PROJECT IL. RTE. 336 OVER TRIB TO LA MOINE RIVER	PROJECT NO. 02076-4
FAP ROUTE 315 SECTION 34-5 (5B)	SCALE AS SHOWN
HANCOCK COUNTY	DATE 04/11/06
STATION 1318+53.88	DESIGNED BY TFG
STRUCTURE NUMBER 034-7001	CHECKED BY CME/MCB
COOMBE-BLOXDORF P.C. Engineers/Land Surveyors Springfield, Illinois	
Design Firm License No. 184-002708	4 OF 8 SHTS

PLOT DATE = 5/1/2006
 FILE NAME = 034-7001-04-01-04.dwg
 PLOT SCALE = 0.250000
 USER NAME = laughtlinr1