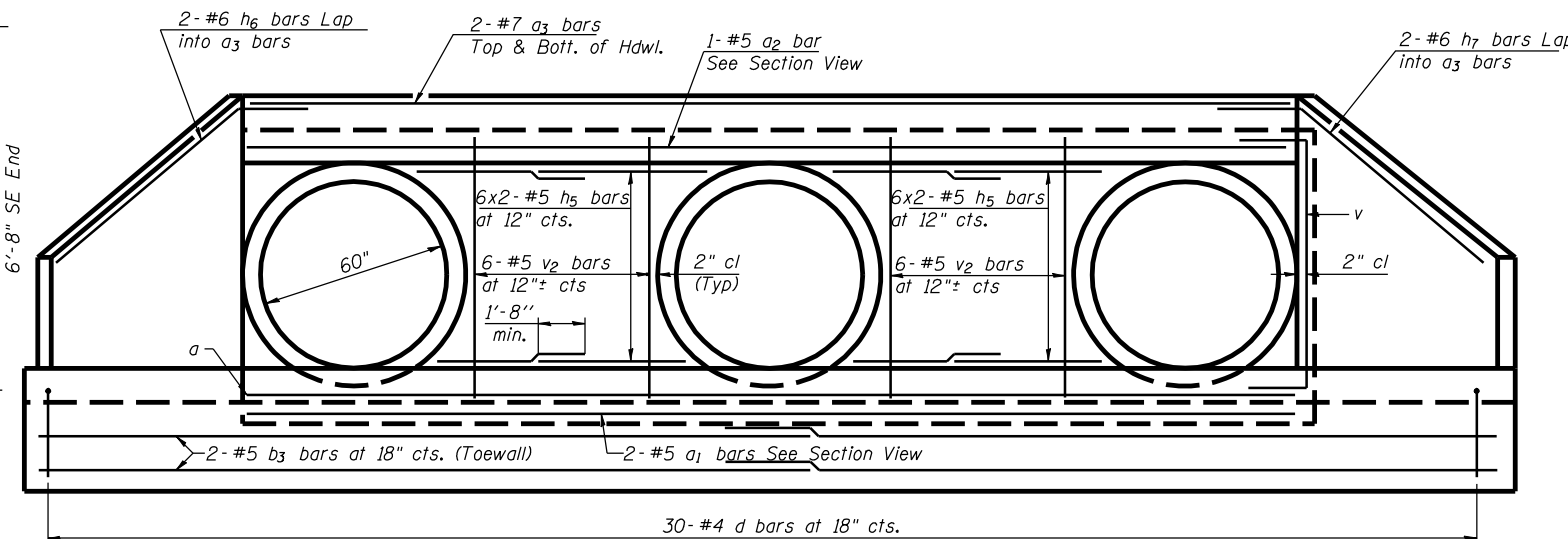


SECTION A-A

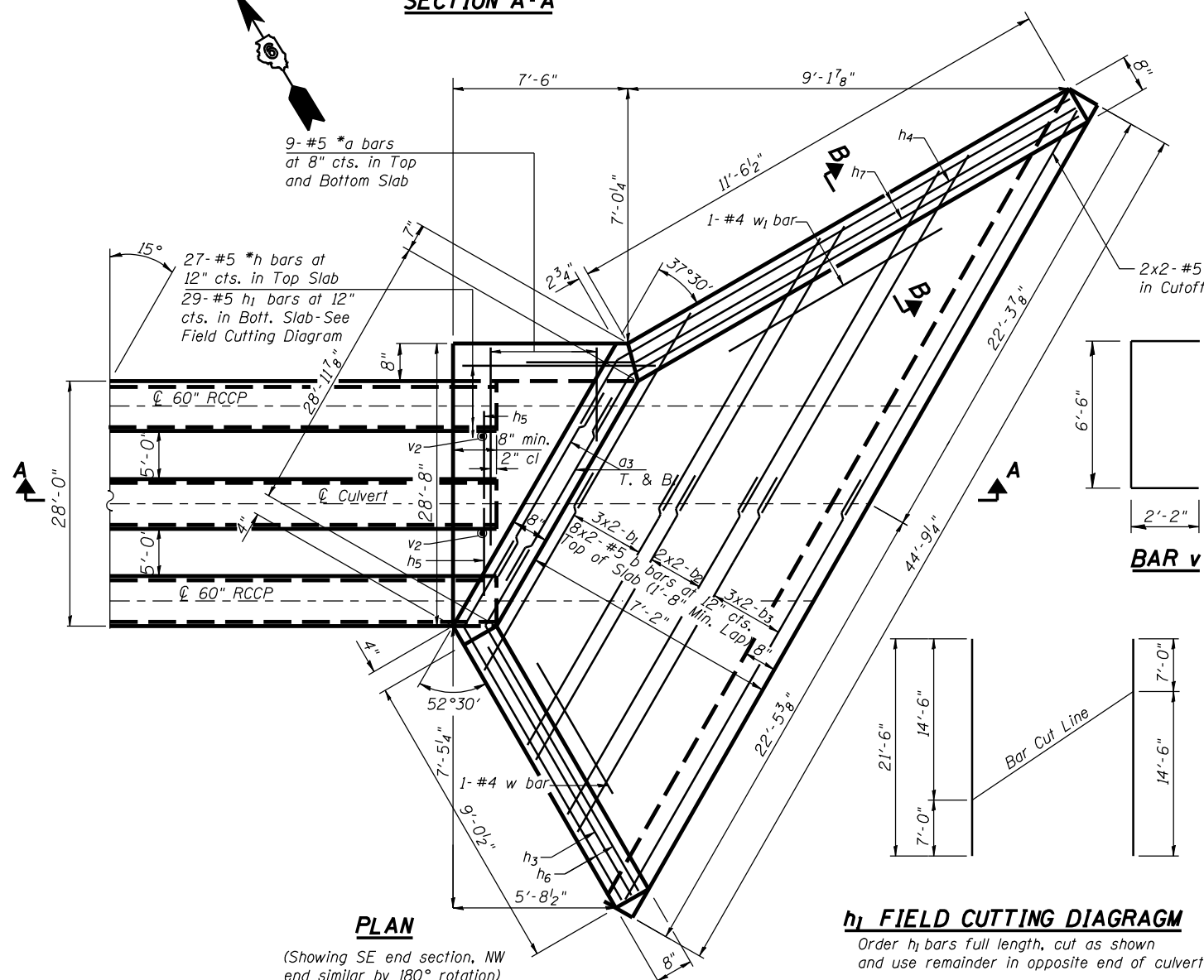


END VIEW

*a and h bars in skew portion of slab shall be ordered full length and cut to fit. Balance of bar to be used in opposite end of culvert.

**2 END SECTIONS
BILL OF MATERIAL**

Bar	No.	Size	Length	Shape
a	18	#5	27'-0"	—
a1	4	#6	28'-4"	—
a2	2	#5	28'-4"	—
a3	8	#7	29'-0"	—
b1	12	#5	17'-11"	—
b2	8	#5	20'-0"	—
b3	20	#5	23'-4"	—
d	60	#4	5'-4"	┌
h	27	#5	8'-0"	—
h1	29	#5	21'-6"	—
h2	12	#6	7'-2"	—
h3	12	#4	8'-8"	—
h4	12	#4	13'-9"	—
h5	48	#5	5'-4"	—
h6	4	#4	12'-7"	—
h7	4	#4	14'-10"	—
v	20	#5	10'-7"	┌
v1	22	#5	14'-3"	┌
v2	24	#5	8'-8"	┌
v3	4	#5	7'-0"	┌
w	2	#4	8'-0"	—
w1	2	#4	10'-0"	—
C-I-P Reinforced Conc End Sections			Cu. Yd.	41.6
Reinforcement Bars			Pound	4,640



PLAN

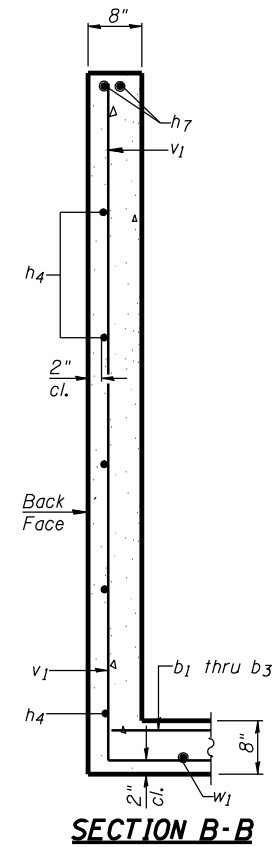
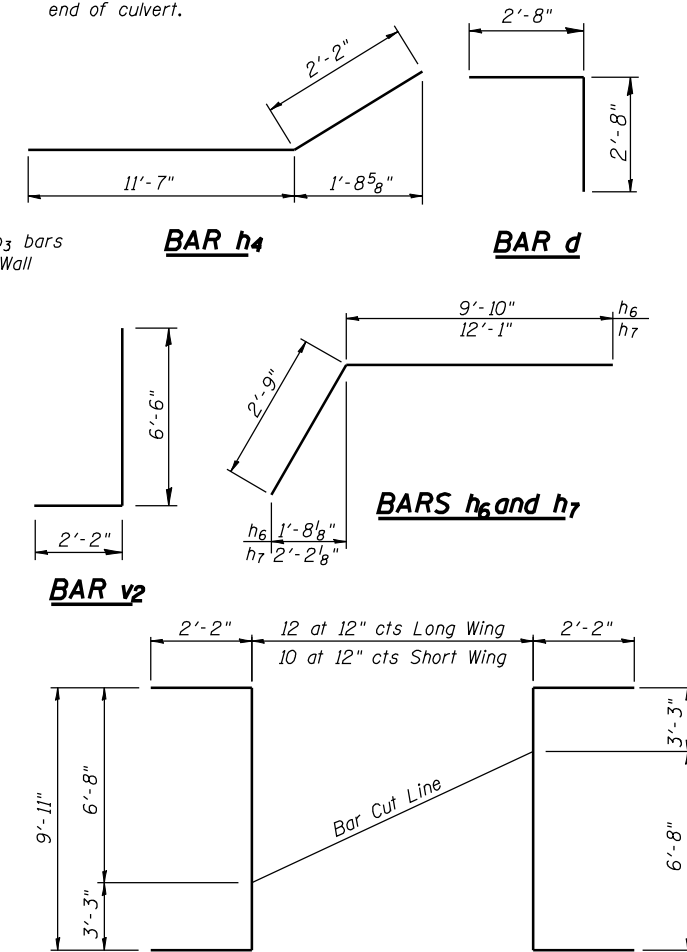
(Showing SE end section, NW end similar by 180° rotation)

h1 FIELD CUTTING DIAGRAM

Order h1 bars full length, cut as shown and use remainder in opposite end of culvert

v1 FIELD CUTTING DIAGRAM

Order v1 bars full length, cut as shown and use remainder in opposite wingwall



SECTION B-B

DATE = 03/08/06
FILE NAME = FAP315-5(SB)
PLOT SCALE = 1/8" = 1'-0"
USER NAME = JTB/MCB

ILLINOIS DEPARTMENT OF TRANSPORTATION	
SHEET TITLE SPECIAL END SECTION DETAILS	
PROJECT FAP 315 (IL 336/US 136)	PROJECT NO. 02076
SECTION 34-5 (SB)	DATE 03/08/06
HANCOCK COUNTY	DRAWN BY TFG
STATION 1247+00.19	CHECKED BY AJB/MCB
COOMBE-BLOXDORF P.C. Engineers/Land Surveyors Springfield, Illinois	1
Design Firm License No. 184-002708	OF 1 SHTS