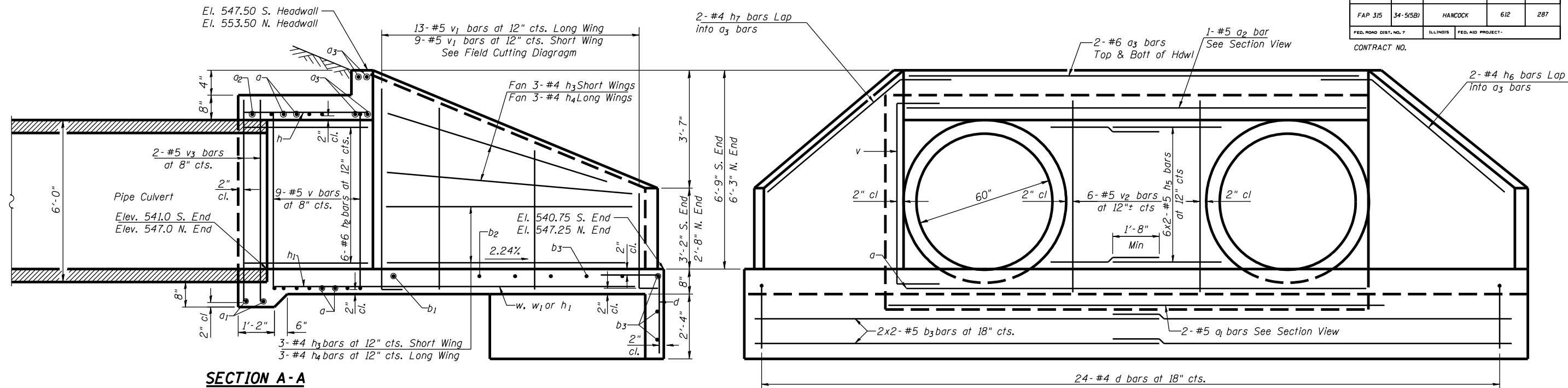
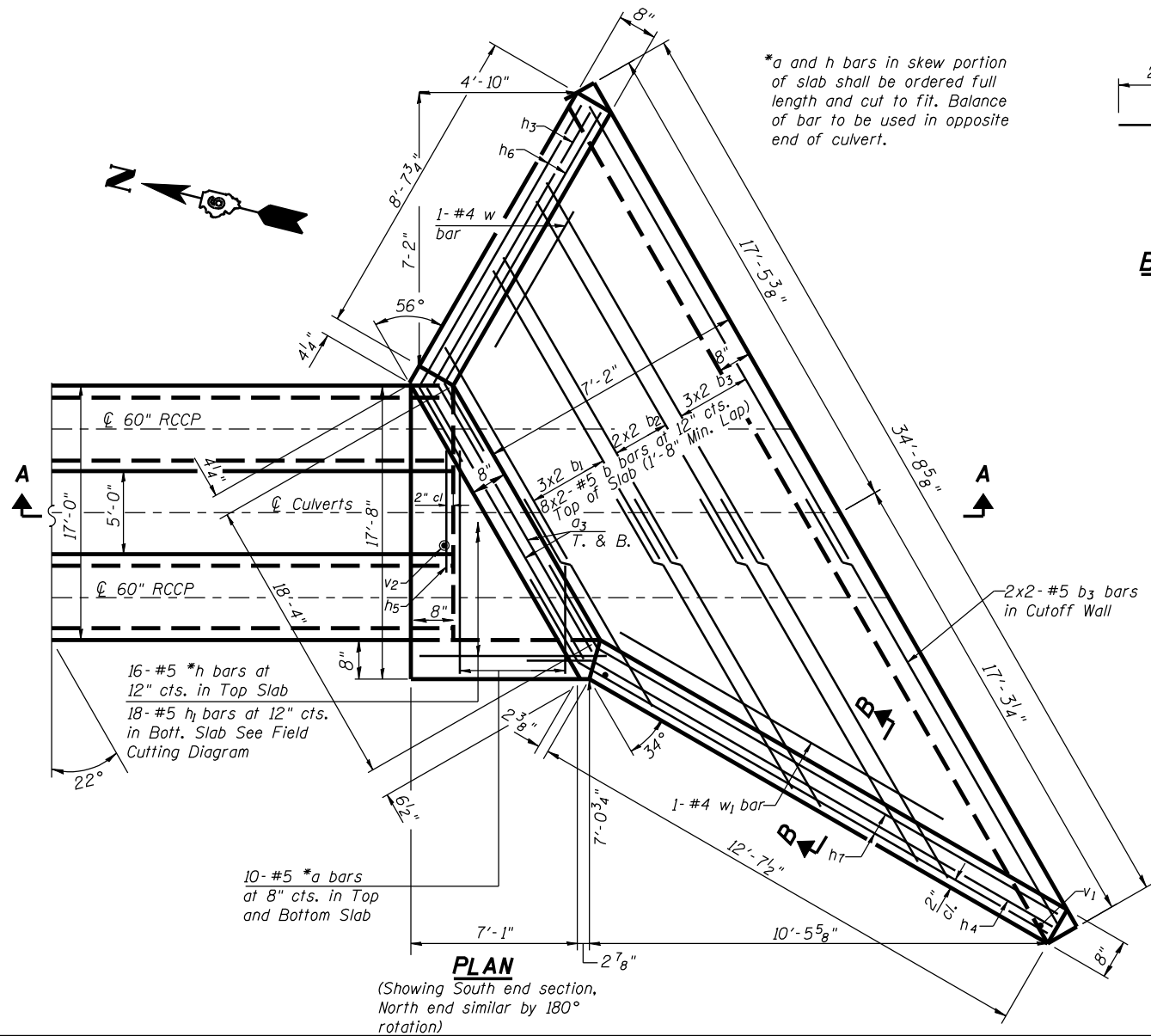


ROUTE NO.	SECTION	COUNTY	DATE	SHEET NO.
FAP 315	34-5(5B)	HANCOCK	6/12	287
FED. ROAD DIST. NO. 7	ILLINOIS	FED. AID PROJECT		

SHEET NO. 1  
1 SHEETS



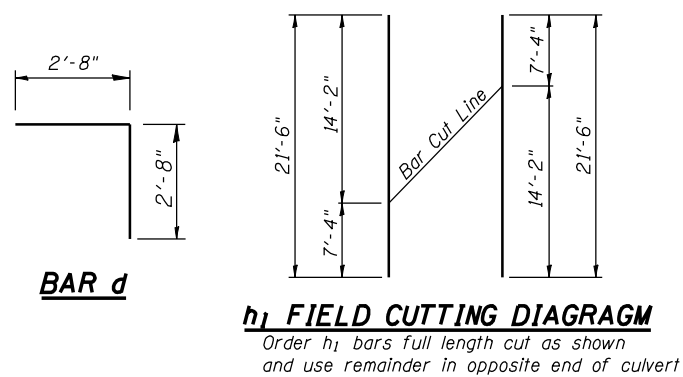
**SECTION A-A**



**PLAN**

(Showing South end section, North end similar by 180° rotation)

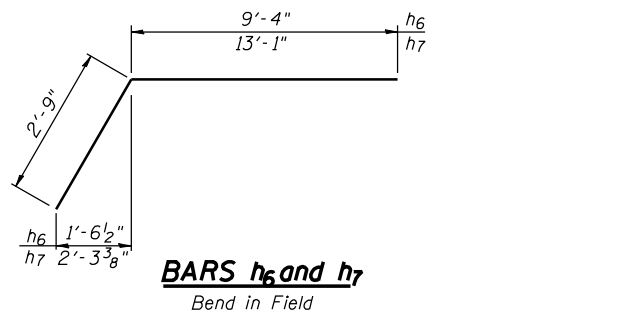
\*a and h bars in skew portion of slab shall be ordered full length and cut to fit. Balance of bar to be used in opposite end of culvert.



**BAR d**

**h1 FIELD CUTTING DIAGRAM**

Order h1 bars full length cut as shown and use remainder in opposite end of culvert

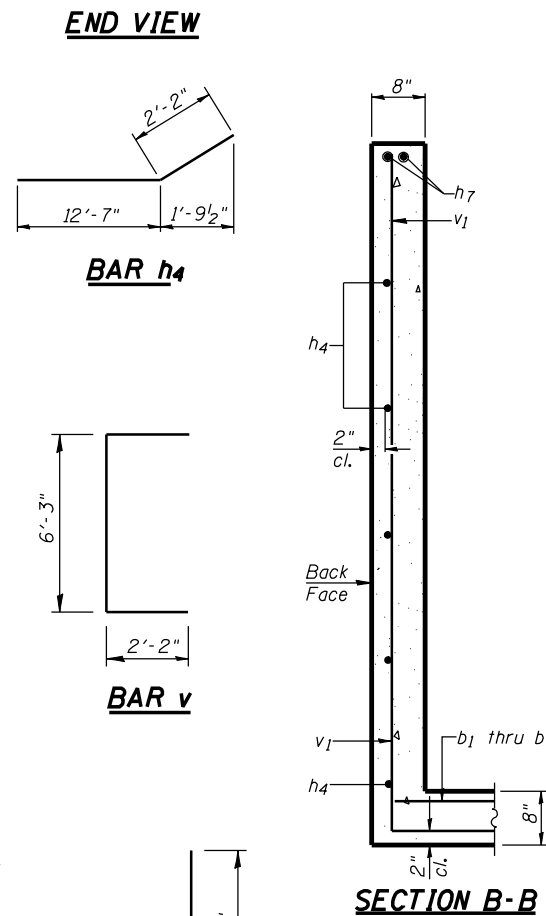


**BARS h6 and h7**

Bend in Field

**v1 FIELD CUTTING DIAGRAM**

Order v1 bars full length cut as shown and use remainder in opposite wingwall



**END VIEW**

**BAR h4**

**BAR v**

**SECTION B-B**

**2 END SECTIONS  
BILL OF MATERIAL**

Bar	No.	Size	Length	Shape
a	20	#5	16'-6"	—
a1	4	#6	17'-4"	—
a2	2	#5	17'-4"	—
a3	8	#6	18'-6"	—
b1	12	#5	13'-5"	—
b2	8	#5	15'-0"	—
b3	20	#5	18'-0"	—
d	48	#4	5'-4"	┘
h	16	#5	7'-2"	—
h1	18	#5	21'-6"	—
h2	12	#6	6'-9"	—
h3	12	#4	8'-3"	—
h4	12	#4	14'-9"	—
h5	24	#5	5'-4"	—
h6	4	#4	12'-1"	—
h7	4	#4	15'-10"	—
v	18	#5	10'-7"	┘
v1	22	#5	14'-3"	┘
v2	12	#5	8'-8"	┘
v3	4	#5	7'-0"	┘
w	2	#4	8'-0"	—
w1	2	#4	11'-0"	—
C-I-P Reinforced Conc End Sections Reinforcement Bars			Cu. Yd.	30.1
			Pound	3270

ILLINOIS DEPARTMENT OF TRANSPORTATION	
SHEET TITLE SPECIAL END SECTION DETAILS	
PROJECT FAP 315 (IL 336/US 136)	PROJECT NO. 02076
SECTION 34-5 (5B)	DATE 03/08/06
HANCOCK COUNTY	DRAWN BY TFG
STATION 1253+60.00	CHECKED BY AUB/MCB
<b>COOMBE-BLOXDORF P.C.</b> Engineers/Land Surveyors Springfield, Illinois	
Design Firm License No. 184-002708	1 OF 1 SHTS

DATE: 03/08/06  
FILE NAME: 34-5(5B) SHEETS  
PLOT SCALE: AS SHOWN  
USER NAME: MCB