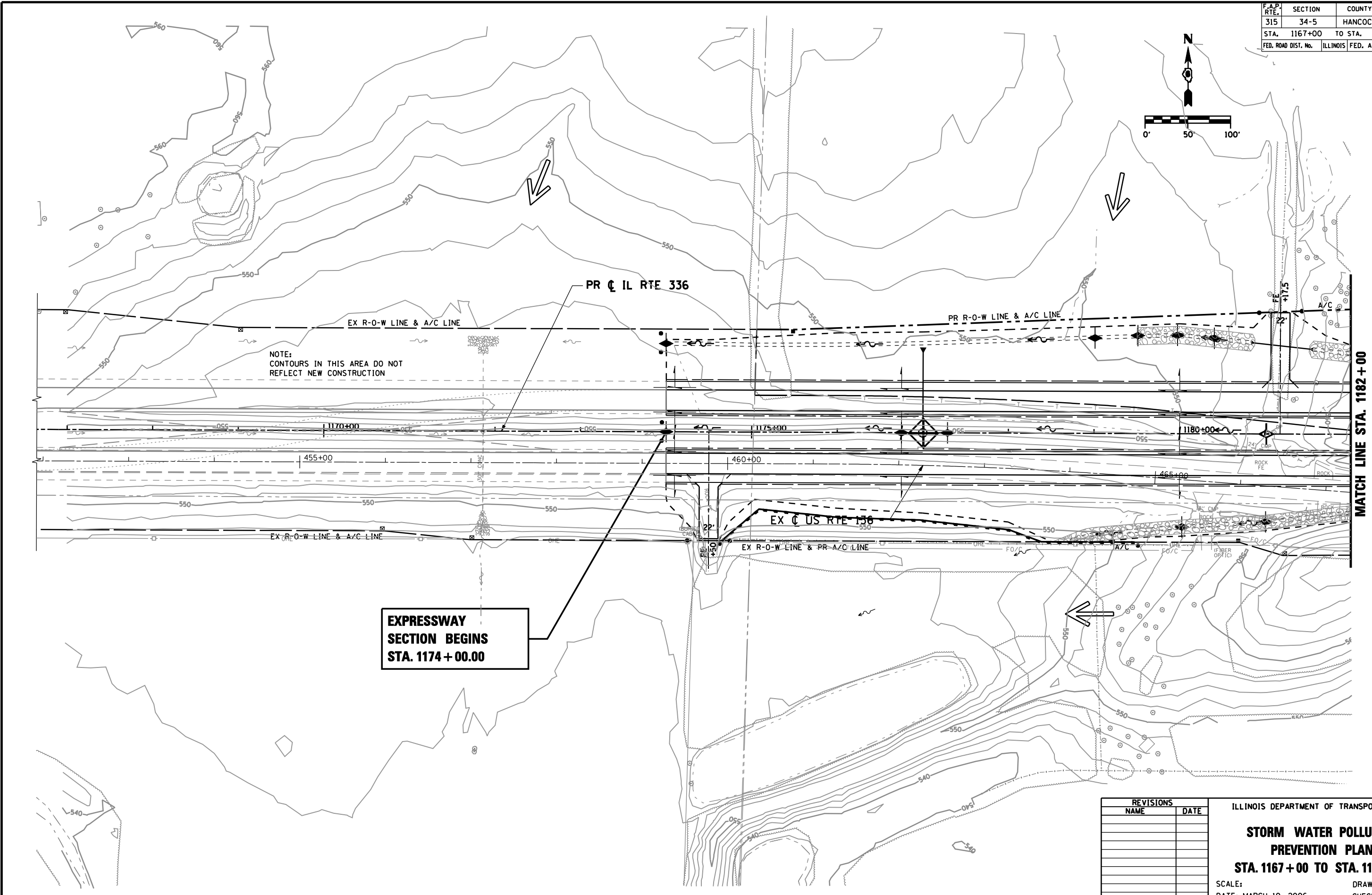
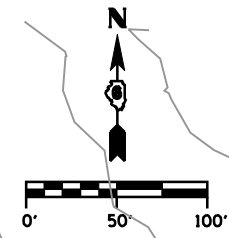


F.A.P. RTE.	SECTION	COUNTY	TOTAL SHEETS	SHEET No.
315	34-5	HANCOCK	612	302
STA.	1167+00	TO STA.	1182+00	
FED. ROAD DIST. No.	ILLINOIS	FED. AID PROJECT		



EXPRESSWAY SECTION BEGINS STA. 1174+00.00

NOTE:
CONTOURS IN THIS AREA DO NOT REFLECT NEW CONSTRUCTION

REVISIONS	
NAME	DATE

ILLINOIS DEPARTMENT OF TRANSPORTATION
STORM WATER POLLUTION PREVENTION PLAN
STA. 1167+00 TO STA. 1182+00
 SCALE: DATE: MARCH 10, 2006
 DRAWN BY: RG
 CHECKED BY: JAC

•DGN: SPEC•
 •DATE: TIME•
 •REF: 01

D6 PROJECT: FILE: