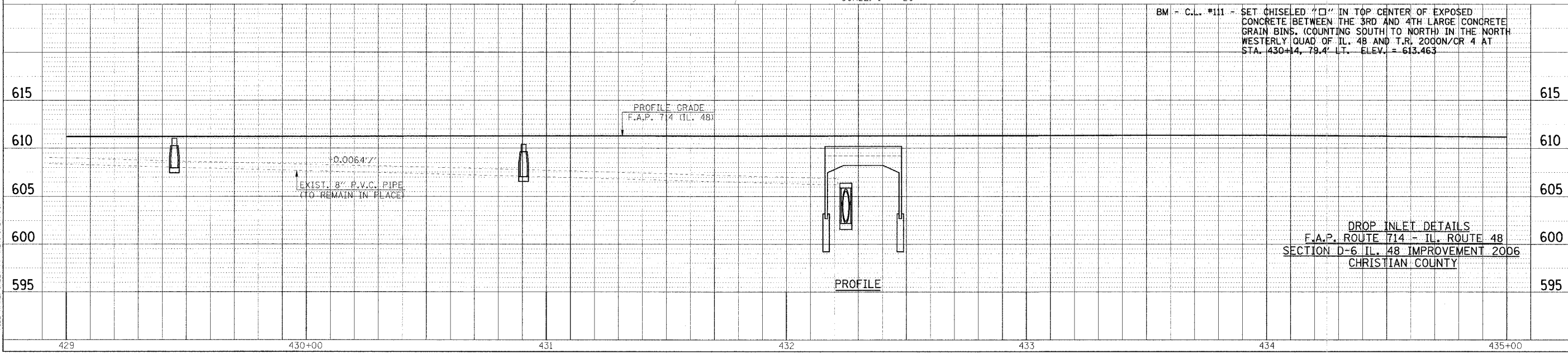
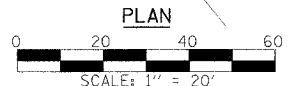
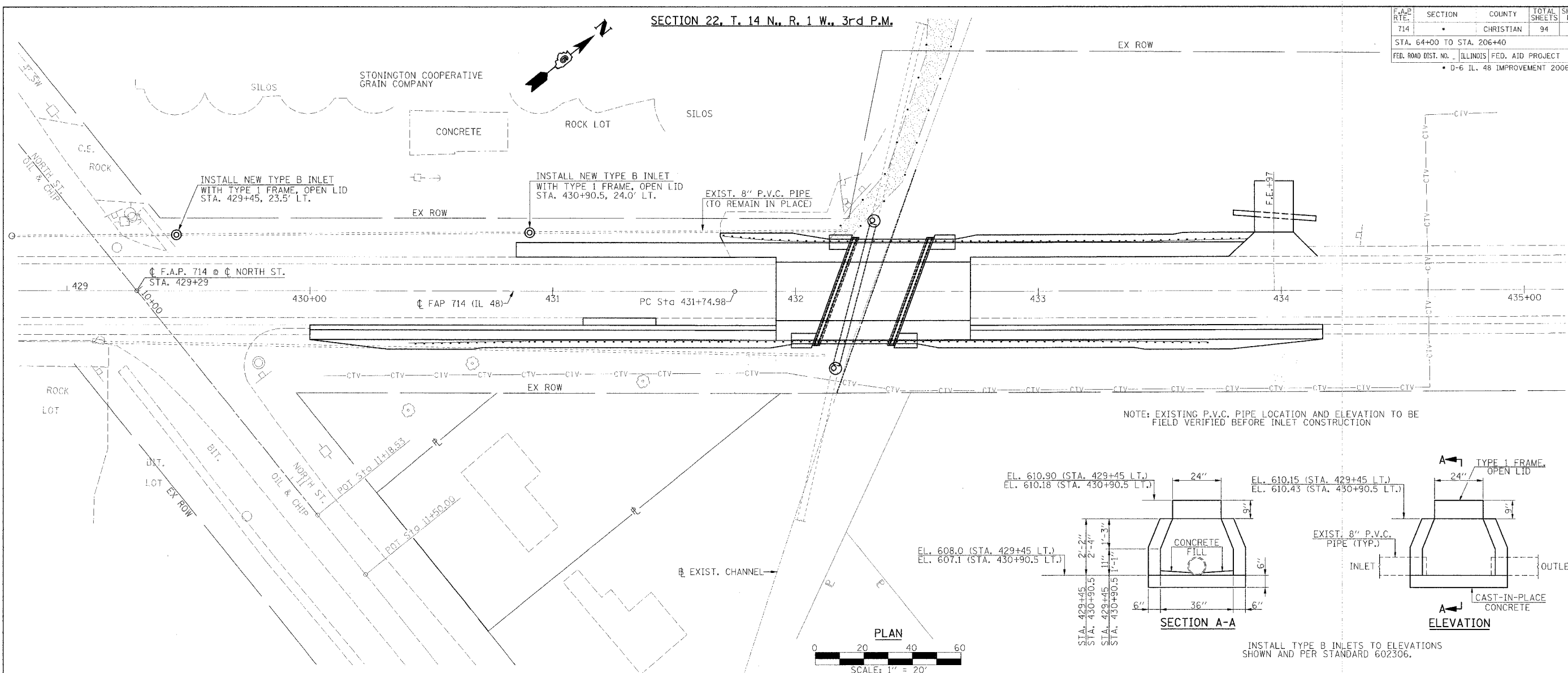


SECTION 22, T. 14 N., R. 1 W., 3rd P.M.

F.A.P. RTE.	SECTION	COUNTY	TOTAL SHEETS	SHEET NO.
714		CHRISTIAN	94	18
STA. 64+00 TO STA. 206+40				
FED. ROAD DIST. NO. ILLINOIS FED. AID PROJECT				
D-6 IL. 48 IMPROVEMENT 2006				



DATE	BY	REVISION

DATE	BY	REVISION

FILE NAME: INLET\_PP (REV. 3/27/06)