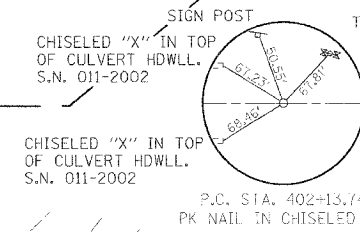


- INDICATES BITUMINOUS SURFACE REMOVAL - BUTT JOINT
- INDICATES BITUMINOUS SURFACE REMOVAL
- INDICATES PAVEMENT REMOVAL LIMITS
- INDICATES TEMPORARY RIGHT OF WAY EASEMENT
- INDICATES PERMANENT RIGHT OF WAY EASEMENT
- INDICATES PROPOSED DITCH FLOW
- INDICATES PROPOSED RIGHT OF WAY
- INDICATES PROPOSED RIGHT OF WAY MARKER

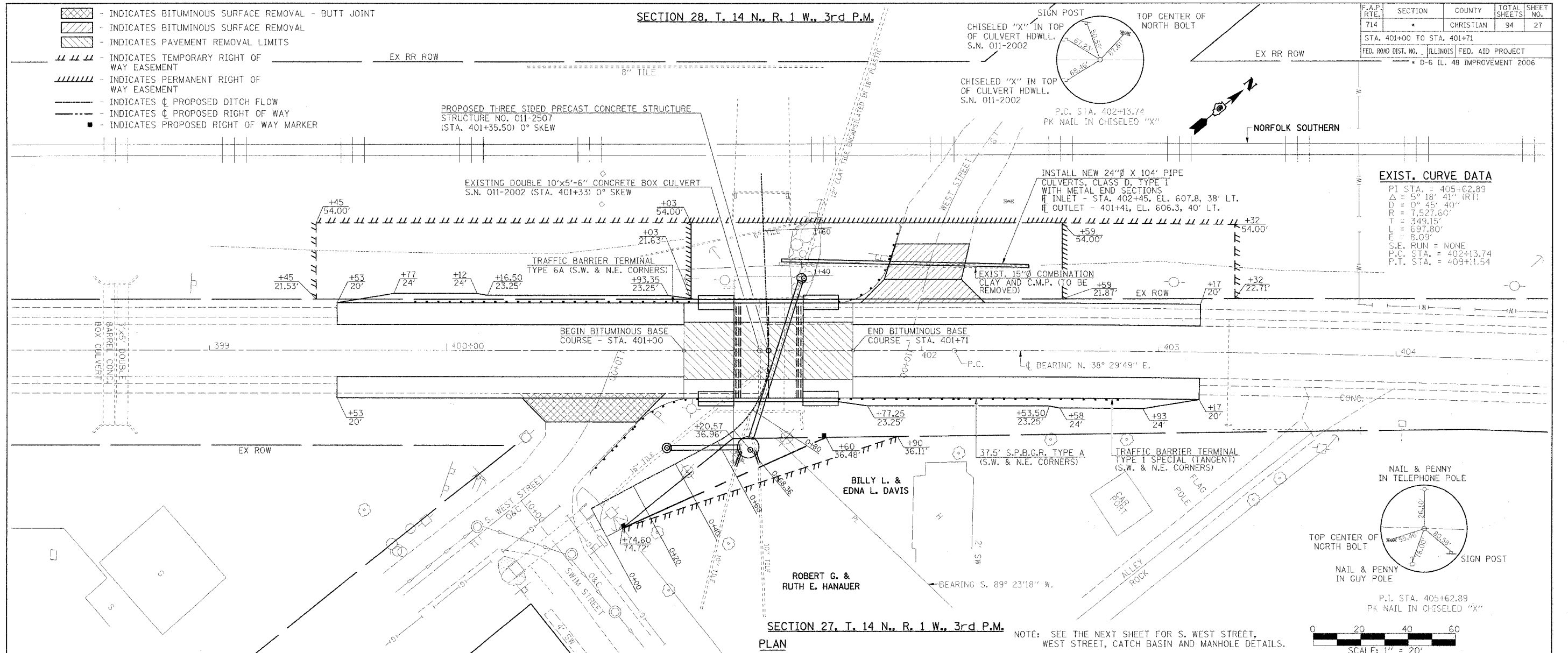
SECTION 28, T. 14 N., R. 1 W., 3rd P.M.

F.A.P. RTE.	SECTION	COUNTY	TOTAL SHEETS	SHEET NO.
714	*	CHRISTIAN	94	27
STA. 401+00 TO STA. 401+71				
FED. ROAD DIST. NO. ILLINOIS FED. AID PROJECT				
D-6 IL. 48 IMPROVEMENT 2006				



EXIST. CURVE DATA

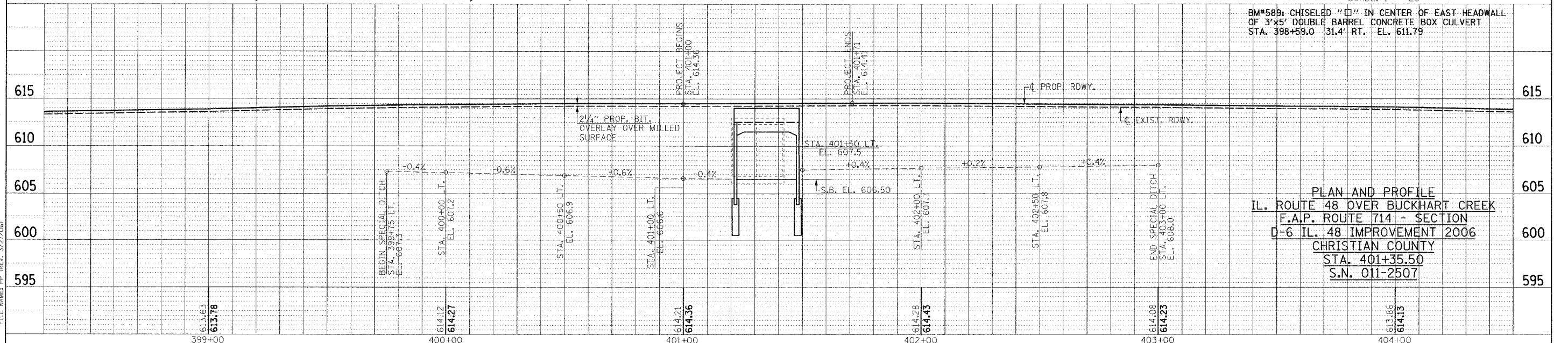
PI STA. = 405+62.89
Δ = 5° 18' 41" (RT)
D = 0° 45' 40"
R = 527.60'
T = 349.15'
L = 697.80'
E = 8.09'
S.E. RUN = NONE
P.C. STA. = 402+13.74
P.T. STA. = 409+11.54



SECTION 27, T. 14 N., R. 1 W., 3rd P.M.

PLAN

NOTE: SEE THE NEXT SHEET FOR S. WEST STREET, WEST STREET, CATCH BASIN AND MANHOLE DETAILS.



BM*58B: CHISELED "X" IN CENTER OF EAST HEADWALL OF 3'x5' DOUBLE BARREL CONCRETE BOX CULVERT STA. 398+59.0 31.4' RT. EL. 611.79

PLAN AND PROFILE
IL. ROUTE 48 OVER BUCKHART CREEK
F.A.P. ROUTE 714 - SECTION
D-6 IL. 48 IMPROVEMENT 2006
CHRISTIAN COUNTY
STA. 401+35.50
S.N. 011-2507

DATE	BY	REVISION

DATE	BY	REVISION

FILE NAME: PP (REV. 3/27/06)

613.63
613.78

614.12
614.27

614.21
614.36

614.28
614.43

614.08
614.23

613.86
614.13