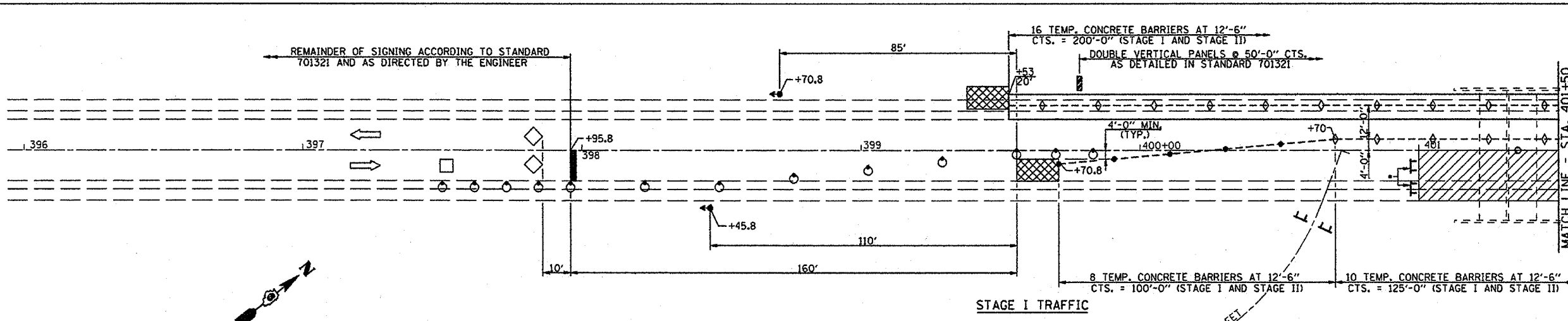
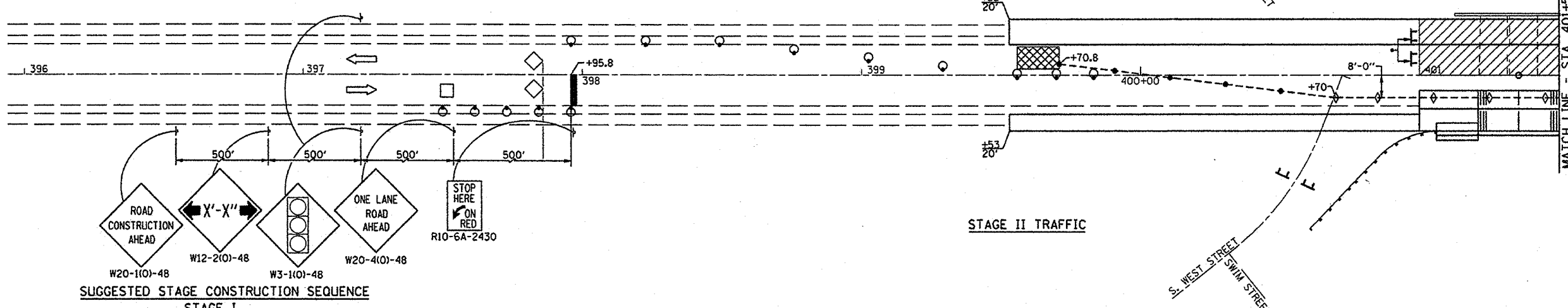


F.A.P. RTE.	SECTION	COUNTY	TOTAL SHEETS	SHEET NO.
714		CHRISTIAN	94	30
STA. 401+00 TO STA. 401+71				
FED. ROAD DIST. NO. ILLINOIS FED. AID PROJECT				
D-6 IL. 48 IMPROVEMENT 2006				

* - TO BE PLACED WHEN NO WORK IS BEING PERFORMED



BITUMINOUS CONCRETE BASE COURSE SUPERPAVE 10"
STA. 399+53 TO STA. 403+17 LT. - 9'-0"



SUGGESTED STAGE CONSTRUCTION SEQUENCE

STAGE I

1. THE CONTRACTOR SHALL PLACE MAX. WIDTH SIGNS AND ROAD CLOSED AHEAD SIGNS AS SHOWN ON SHEET 23, BEFORE IMPLEMENTING ANY STAGE TRAFFIC CONTROL. THESE SIGNS SHALL BE INCLUDED IN THE COST OF "TRAFFIC CONTROL AND PROTECTION STANDARD 701321 (SPECIAL)".
2. CONSTRUCT BITUMINOUS CONCRETE BASE COURSE SUPERPAVE 10" LT. STA. 399+53 TO STA. 403+17 - (9'-0" WIDE).
3. ERECT TRAFFIC CONTROL FOR STAGE I.
4. REMOVE EXISTING STRUCTURE RIGHT, @ STA. 401+33.
5. CONSTRUCT PROPOSED STAGE I THREE SIDED 25'-0" X 6'-2" CULVERT AND WINGWALLS @ STA. 401+35.5.
6. CONSTRUCT PROPOSED BITUMINOUS BASE COURSE SUPERPAVE 10" RT. STA. 399+53 TO STA. 403+17 9'-0" WIDE.
7. CONSTRUCT PROPOSED GUARDRAIL & TERMINALS RT. RADially ALONG S. WEST STREET & STA. 401+64.17 TO STA. 402+83.07.
8. CONSTRUCT BITUMINOUS CONCRETE BASE COURSE 11 1/2" STA. 401+00 TO STA. 401+71 RT.

STAGE II

1. ERECT TRAFFIC CONTROL FOR STAGE II.
2. REMOVE EXISTING STRUCTURE LEFT @ STA. 401+33.
3. CONSTRUCT PROPOSED STAGE II PRECAST THREE SIDED 25'-0" X 6'-2" CULVERT AND WINGWALLS @ STA. 401+35.5.
4. CONSTRUCT PROPOSED BITUMINOUS CONCRETE BASE COURSE SUPERPAVE 10" LT. STA. 401+00 TO STA. 401+71.
5. REMOVE EXISTING 15"Ø C.M.P. AND INSTALL NEW 24"Ø PIPE CULVERT CLASS D, TYPE I, FILL AND PLACE AGGREGATE BASE COURSE TYPE A AT WEST STREET.
6. CONSTRUCT PROPOSED AGGREGATE SHOULDERS LT. STA. 399+53 TO STA. 401+00 & STA. 401+71 TO STA. 403+17 WITH OMISSION OF AGGREGATE SHOULDERS FROM STA. 401+71 TO STA. 402+29 LT. AT WEST STREET.
7. CONSTRUCT PROPOSED GUARDRAIL & TERMINALS LT. STA. 399+87.93 TO STA. 401+06.83 & RADially ALONG WEST STREET.
8. CONSTRUCT BITUMINOUS CONCRETE BASE COURSE 11 1/2" STA. 401+00 TO STA. 401+71 RT.

FINAL

1. INSTALL SHORT-TERM PAVEMENT MARKINGS AND REMOVE ALL STAGE TRAFFIC CONTROL AND RE-ESTABLISH NORMAL TRAFFIC PATTERNS.
2. REMOVE SHORT TERM PAVEMENT MARKINGS AND COMPLETE BITUMINOUS CONCRETE BINDER AND SURFACE SURFACE COURSE ON IL. 48 AND WEST STREET UNDER TRAFFIC WITH FLAGGERS.
3. FINAL STRIPING, SEEDING AND MISCELLANEOUS CLEANUP.

GENERAL NOTES

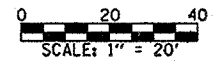
1. THIS TRAFFIC CONTROL DETAIL SHALL BE USED IN CONJUNCTION WITH STANDARD 701321.
2. THE CONTRACTOR SHALL NOTIFY LARRY SIMON (PH. 785-5836) IN THE DISTRICT 6 TRAFFIC SECTION OF THE BUREAU OF OPERATIONS AT LEAST ONE WEEK PRIOR TO IMPLEMENTING STAGE TRAFFIC CONTROL.
3. EXISTING PAVEMENT MARKINGS THAT CONFLICT WITH THE REVISED STAGE TRAFFIC PATTERNS DURING ALL PHASES OF STAGE CONSTRUCTION SHALL BE REMOVED AS SPECIFIC IN SECTION 783 OF THE STANDARD SPECIFICATIONS AND PAID FOR AS "PAVEMENT MARKING REMOVAL".
4. THE CONTRACTOR SHALL MAINTAIN FULL OPERATIONAL STATUS OF ALL SIDEROADS AND ACCESS TO ALL PRIVATE AND COMMERCIAL PROPERTIES DURING ALL PHASES OF CONSTRUCTION.
5. TEMPORARY CONCRETE BARRIER. THE BARRIER UNIT AT EACH END OF THE INSTALLATION SHALL BE SECURED TO THE PAVEMENT OR SHOULDER USING ALL SIX ANCHORING PINS FOR F SHAPE OR ALL SIX DOWEL BARS FOR NEW JERSEY SHAPE.
6. EACH DETECTOR LOOP SHALL BE CONNECTED TO A SEPERATE DETECTOR AMPLIFIER.
7. THE COST TO INSTALL TEMPORARY PAVEMENT MARKING AS DETAILED ON THESE SHEETS SHALL BE INCLUDED IN THE COST OF "TRAFFIC CONTROL & PROTECTION STANDARD 701321, SPECIAL".
8. SIGNING FOR STAGE II SAME AS STAGE I.

SYMBOLS

	WORK AREA
	SIGN
	TYPE III BARRICADE
	DRUM WITH STEADY BURNING LIGHT
	TRAFFIC SIGNAL
	TEMPORARY RUMBLE STRIP
	INDUCTION LOOP DETECTOR
	DOUBLE VERTICAL PANEL
	TYPE C BIDIRECTIONAL REFLECTOR
	TEMPORARY CONCRETE BARRIER
	IMPACT ATTENUATOR
	STEADY BURNING LIGHTS AND DOUBLE VERTICAL PANELS

WORK THIS SHEET WITH THE PREVIOUS SHEET AND THE NEXT SHEET.
SEE THE NEXT SHEET FOR TRAFFIC CONTROL & TEMPORARY PAVEMENT MARKING SCHEDULES.

STAGE CONSTRUCTION TRAFFIC DETAILS
IL. ROUTE 48 OVER BUCKHART CREEK
F.A.P. ROUTE 714 - SECTION
D-6 IL. 48 IMPROVEMENT 2006
CHRISTIAN COUNTY
STA. 401+35.50
S.N. 011-2507



FILE NAME: 283 (REV. 5/5/06)