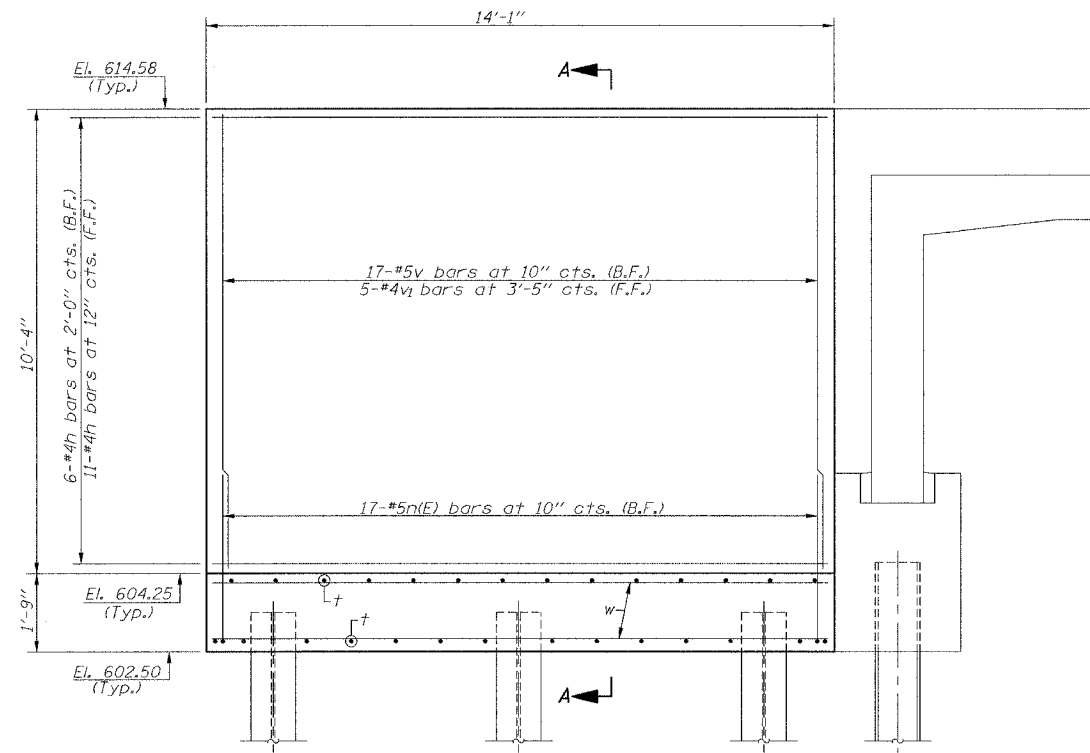


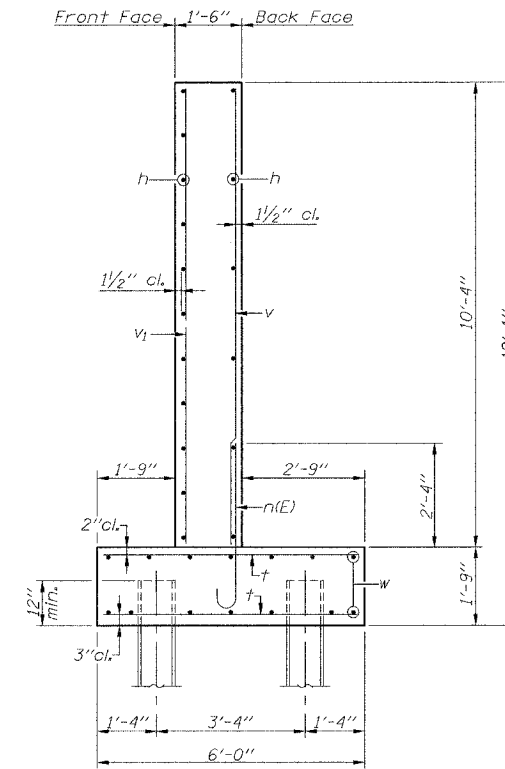
ROUTE NO.	SECTION	COUNTY	TOTAL SHEETS	SHEET NO.
F.A.P. 714	*	CHRISTIAN	94	42
FED. ROAD DIST. NO.	ILLINOIS	FED. AID PROJECT		

SHEET NO. 5  
OF 10 SHEETS

\* D-6 IL. 48 IMPROVEMENT 2006



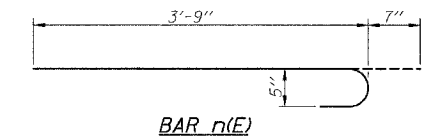
WINGWALL ELEVATION



SECTION A-A

**PILE DATA**

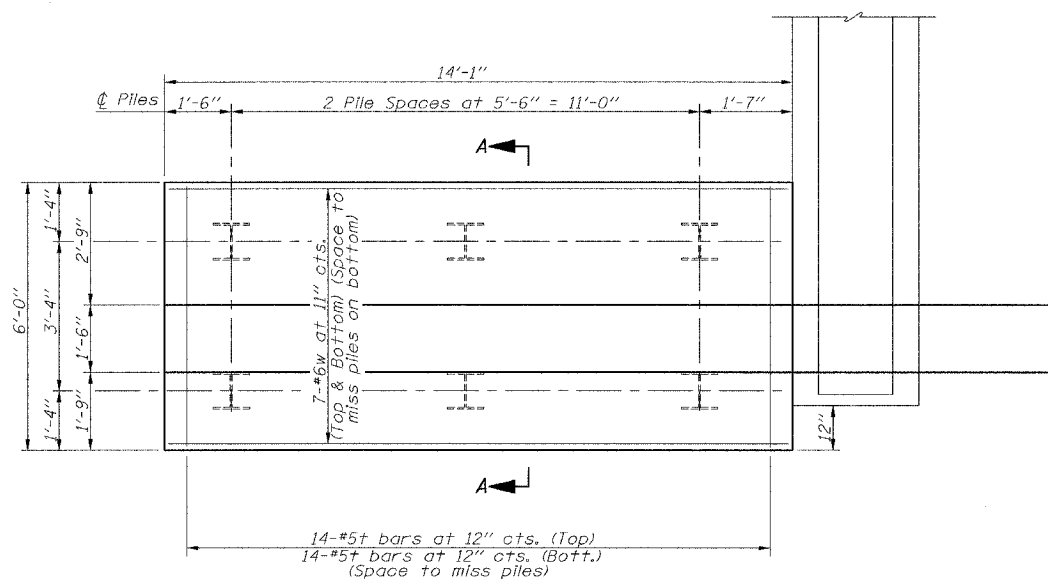
	Northwest & Northeast Wings	Southwest & Southeast Wings
Type:	Steel HP 10x42	Steel HP 10x42
Capacity:	18 Tons (Driven to 27 Tons)	18 Tons (Driven to 27 Tons)
Est. Length:	33'	27'
No. Req'd.	12	12



**(FOUR WINGWALLS)  
BILL OF MATERIAL**

BAR	NO.	SIZE	LENGTH	SHAPE
h	68	#4	13'-9"	—
n(E)	68	#5	4'-4"	U
t	112	#5	5'-8"	—
v	68	#5	10'-1"	—
v1	20	#4	10'-1"	—
w	56	#6	13'-9"	—
Concrete Structures		Cu.Yd.	54.3	
Reinforcement Bars		Pound	3290	
Reinforcement Bars (Epoxy Coated)		Pound	310	
Furnishing Steel Piles HP 10x42		Foot	720	
Driving Steel Piles		Foot	720	

Reinforcement bars designated (E) shall be epoxy coated.  
Structure excavation required for wingwalls included in the bid item for "Three Sided Precast Structures."



FOOTING PLAN

**WINGWALL DETAILS**  
IL. ROUTE 48 OVER BUCKHART CREEK  
F.A.P. ROUTE 714 - SECTION  
D-6 IL. 48 IMPROVEMENT 2006  
CHRISTIAN COUNTY  
STA. 401+35.5  
S.N. 011-2507

FILE NAME: I300-1 STRUCTURE (REV. 3/27/06)