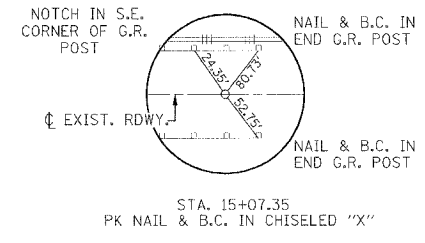
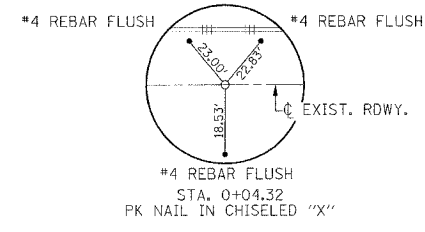
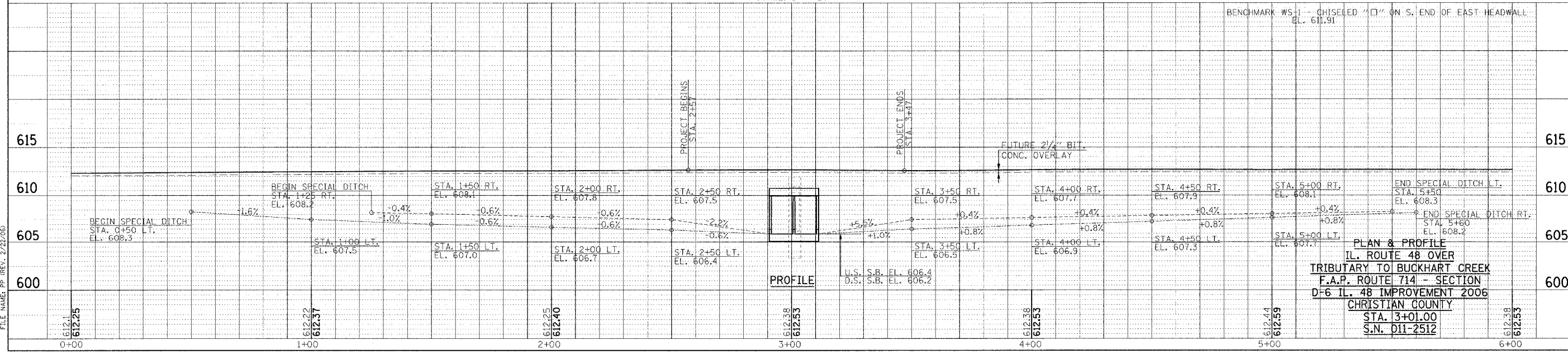
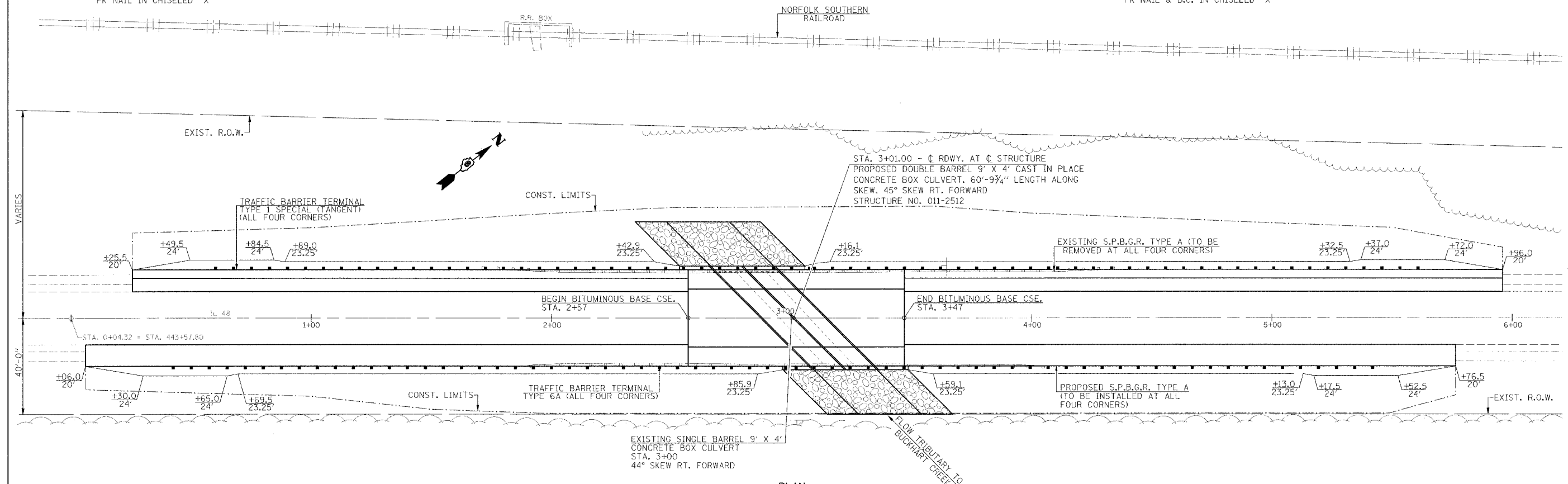


F.A.P. RTE.	SECTION	COUNTY	TOTAL SHEETS	SHEET NO.
714		CHRISTIAN	94	50
STA. 2+457 TO STA. 3+47				
FED. ROAD DIST. NO. ILLINOIS FED. AID PROJECT				
• D-6 IL. 48 IMPROVEMENT 2006				



DATE	BY	REVISION
		1.00
		2.00
		3.00
		4.00
		5.00
		6.00
		7.00
		8.00
		9.00
		10.00
		11.00
		12.00
		13.00
		14.00
		15.00
		16.00
		17.00
		18.00
		19.00
		20.00
		21.00
		22.00
		23.00
		24.00
		25.00
		26.00
		27.00
		28.00
		29.00
		30.00
		31.00
		32.00
		33.00
		34.00
		35.00
		36.00
		37.00
		38.00
		39.00
		40.00
		41.00
		42.00
		43.00
		44.00
		45.00
		46.00
		47.00
		48.00
		49.00
		50.00

DATE	BY	REVISION
		1.00
		2.00
		3.00
		4.00
		5.00
		6.00
		7.00
		8.00
		9.00
		10.00
		11.00
		12.00
		13.00
		14.00
		15.00
		16.00
		17.00
		18.00
		19.00
		20.00
		21.00
		22.00
		23.00
		24.00
		25.00
		26.00
		27.00
		28.00
		29.00
		30.00
		31.00
		32.00
		33.00
		34.00
		35.00
		36.00
		37.00
		38.00
		39.00
		40.00
		41.00
		42.00
		43.00
		44.00
		45.00
		46.00
		47.00
		48.00
		49.00
		50.00



FILE NAME: PP REV. 2/22/06