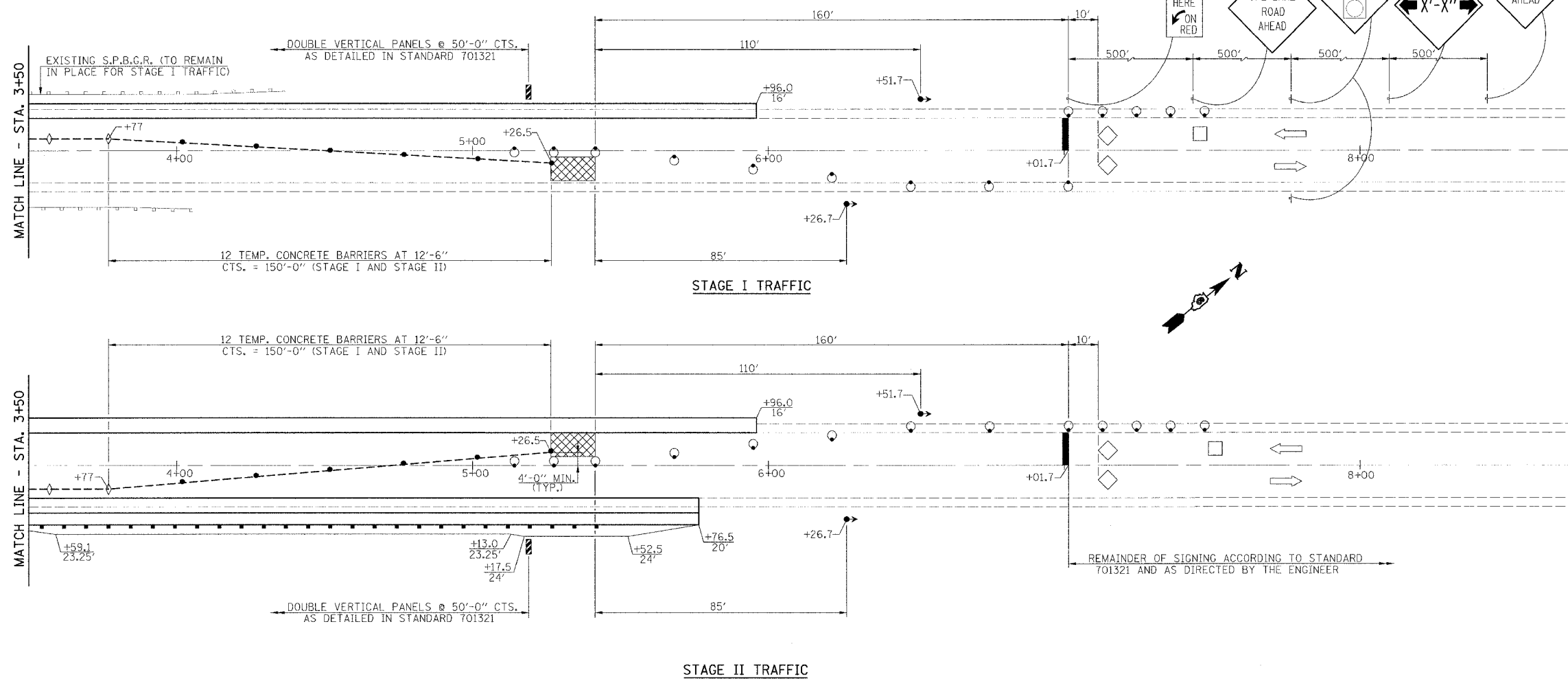


F.A.P. RTE.	SECTION	COUNTY	TOTAL SHEETS	SHEET NO.
714		CHRISTIAN	94	53
STA. 2+57 TO STA. 3+47				
FED. ROAD DIST. NO. ILLINOIS FED. AID PROJECT				
• D-6 IL. 48 IMPROVEMENT 2006				

**BITUMINOUS CONCRETE BASE  
COURSE SUPERPAVE 10"**  
STA. 0+25.5 TO STA. 5+96.0 LT. - 5'-6"  
(TO BE PLACED FOR STAGE I TRAFFIC)



**TRAFFIC CONTROL SCHEDULE**

LOCATION STATION TO STATION	TEMP. CONC. BARRIER (FOOT)	RELOCATE TEMP. CONC. BARRIER (FOOT)	IMPACT ATTENUATOR TEMPORARY (EACH)	RELOCATE IMPACT ATTENUATOR (EACH)
<b>STAGE I</b>				
STA. 0+62.5 TO STA. 0+77.5			1	
STA. 0+77.5 TO STA. 5+26.5 LT.	450			
STA. 5+26.5 TO STA. 5+41.5			1	
<b>STAGE II</b>				
STA. 0+62.5 TO STA. 0+77.5				1
STA. 0+77.5 TO STA. 5+26.5 RT.		450		
STA. 5+26.5 TO STA. 5+41.5				1
<b>TOTAL</b>	<b>450</b>	<b>450</b>	<b>2</b>	<b>2</b>

**SCHEDULE  
TEMPORARY PAVEMENT MARKING**

LOCATION STATION TO STATION	TEMP. PAV'T. MARKING LINE - 5" (FOOT)	TEMP. PAV'T. MARKING LINE - 24" (FOOT)
<b>STAGE I</b>		
STA. 442+56 RT.		12
STA. 0+25.5 TO STA. 5+96.0 LT.	571	
STA. 442+56 TO STA. 7+01.7 (Ø)	200	
STA. 7+01.7		12
<b>STAGE II</b>		
STA. 0+06.0 TO STA. 5+76.5 RT.	571	
<b>TOTAL</b>	<b>1342</b>	<b>24</b>

- SYMBOLS**
- WORK AREA
  - SIGN
  - TYPE III BARRICADE
  - DRUM WITH STEADY BURNING LIGHT
  - TRAFFIC SIGNAL
  - TEMPORARY RUMBLE STRIP
  - INDUCTION LOOP DETECTOR
  - DOUBLE VERTICAL PANEL
  - TYPE C BIDIRECTIONAL REFLECTOR
  - TEMPORARY CONCRETE BARRIER
  - IMPACT ATTENUATOR
  - STEADY BURNING LIGHTS AND DOUBLE VERTICAL PANELS

NOTE:  
SIGNING FOR STAGE II SAME AS STAGE I.  
WORK THIS SHEET WITH THE TWO PREVIOUS SHEETS AND THE NEXT SHEET.

**STAGE CONSTRUCTION TRAFFIC DETAILS**  
IL. ROUTE 48 OVER BUCKHART CREEK  
F.A.P. ROUTE 714 - SECTION  
D-6 IL. 48 IMPROVEMENT 2006  
CHRISTIAN COUNTY  
STA. 3+01.00  
S.N. 011-2512



FILE NAME: 507D283 (REV. 1-31-06)