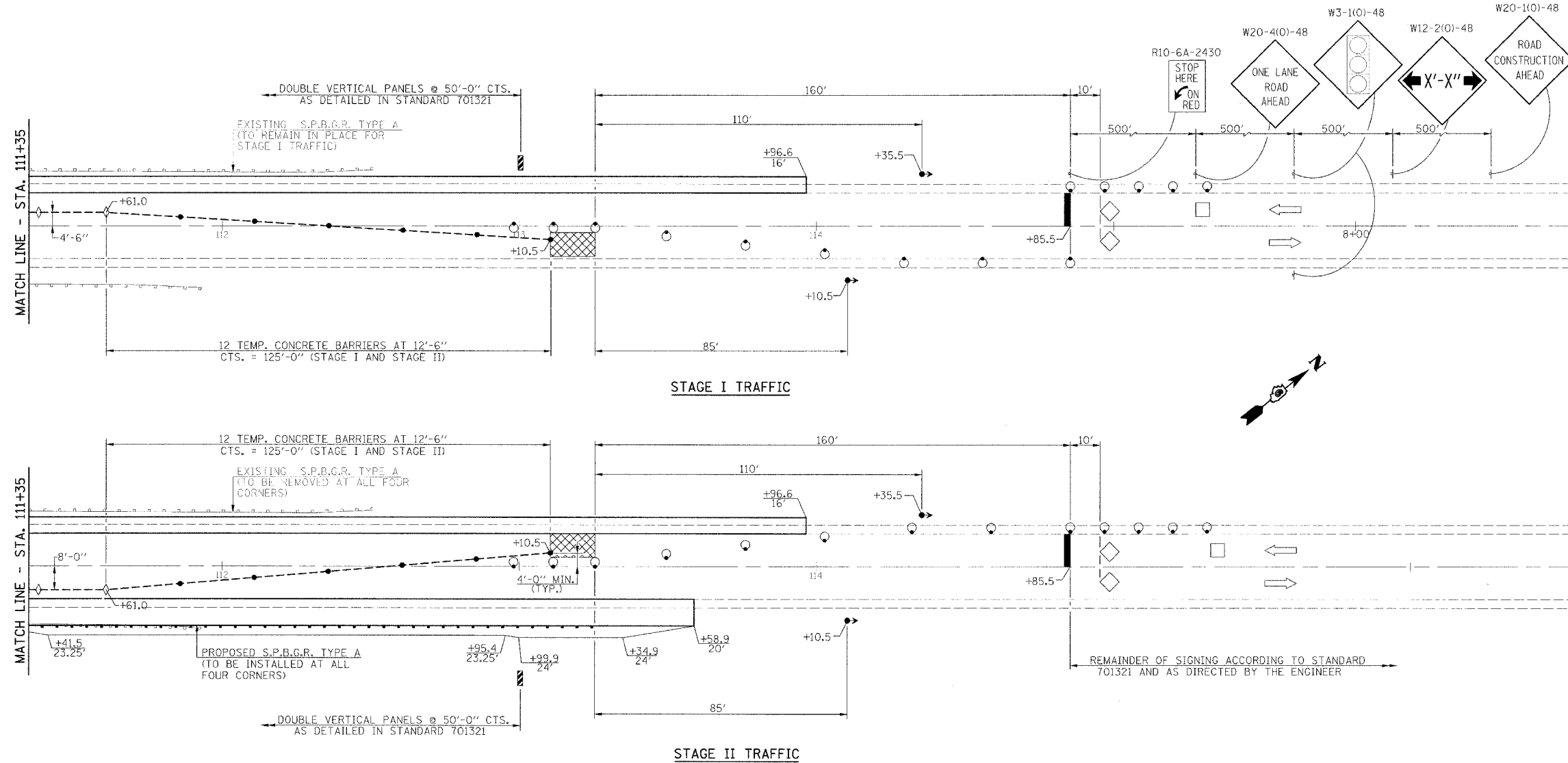


F.A.P. RTE.	SECTION	COUNTY	TOTAL SHEETS	SHEET NO.
714	*	CHRISTIAN	94	70
STA. 110+70 TO STA. 111+26				
FED. ROAD DIST. NO. ILLINOIS FED. AID PROJECT				
* D-6 IL 48 IMPROVEMENT 2006				

**BITUMINOUS CONCRETE BASE
COURSE WIDENING SUPERPAVE 10"**
STA. 108+38.1 TO STA. 113+96.6 LT. - 5'-6"
(TO BE PLACED FOR STAGE I TRAFFIC)



TRAFFIC CONTROL SCHEDULE

LOCATION STATION TO STATION	TEMP. CONC. BARRIER (FOOT)	RELOCATE TEMP. CONC. BARRIER (FOOT)	IMPACT ATTENUATOR TEMPORARY (EACH)	RELOCATE IMPACT ATTENUATOR (EACH)
STAGE I				
STA. 108+71.5 TO STA. 108+86.5			1	
STA. 108+86.5 TO STA. 113+10.5 LT.	425			
STA. 113+10.5 TO STA. 113+25.5			1	
STAGE II				
STA. 108+71.5 TO STA. 108+86.5				1
STA. 108+86.5 TO STA. 113+10.5 RT.		425		
STA. 113+10.5 TO STA. 113+25.5				1
TOTAL	425	425	2	2

**SCHEDULE
TEMPORARY PAVEMENT MARKING**

LOCATION STATION TO STATION	TEMP. PAV'T. MARKING LINE - 5" (FOOT)	TEMP. PAV'T. MARKING LINE - 24" (FOOT)
STAGE I		
STA. 107+11.5 RT.		12
STA. 108+38.1 TO STA. 113+96.6 LT.	559	
STA. 107+11.5 TO STA. 114+85.5 (C)	200	
STA. 114+85.5		12
STAGE II		
STA. 108+00.4 TO STA. 113+58.9 RT.	559	
TOTAL	1318	24

SYMBOLS

- ▨ WORK AREA
- ⊥ SIGN
- ⊥ TYPE III BARRICADE
- DRUM WITH STEADY BURNING LIGHT
- ◀▶ TRAFFIC SIGNAL
- ▤ TEMPORARY RUMBLE STRIP
- ◇ INDUCTION LOOP DETECTOR
- ▨ DOUBLE VERTICAL PANEL
- ◇ TYPE C BIDIRECTIONAL REFLECTOR
- TEMPORARY CONCRETE BARRIER
- ▨ IMPACT ATTENUATOR
- STEADY BURNING LIGHTS AND DOUBLE VERTICAL PANELS

NOTE: SIGNING FOR STAGE II SAME AS STAGE I.

WORK THIS SHEET WITH PREVIOUS TWO SHEETS.

STAGE CONSTRUCTION TRAFFIC DETAILS
IL ROUTE 48 OVER
TRIBUTARY TO BUCKHART CREEK
F.A.P. ROUTE 714 - SECTION
D-6 IL 48 IMPROVEMENT 2006
CHRISTIAN COUNTY
STA. 110+98.50
S.N. 011-7055

