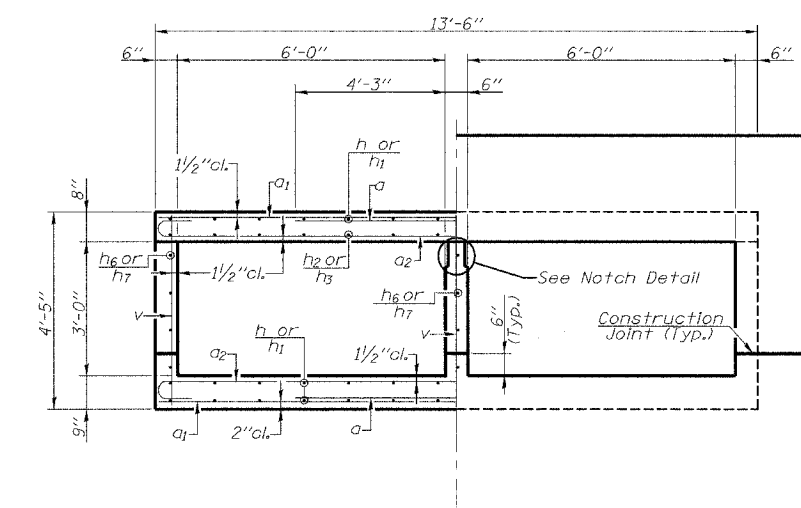
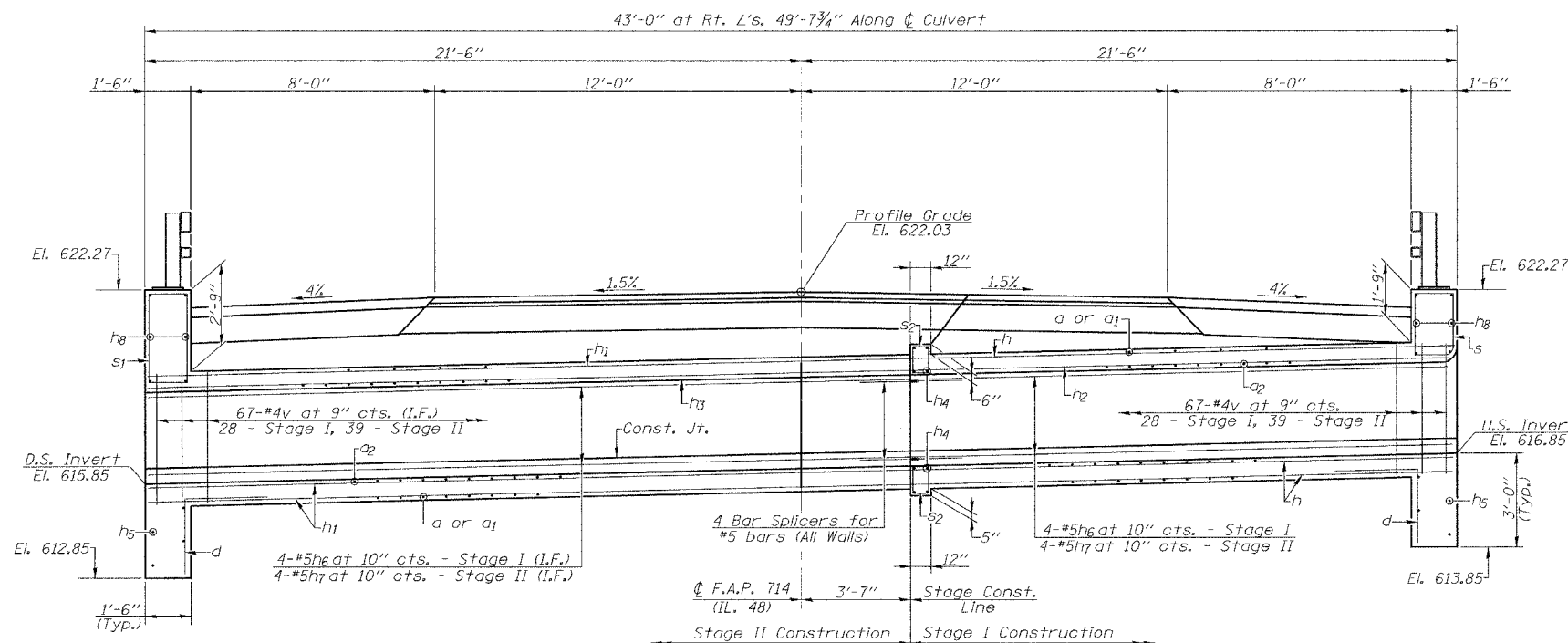
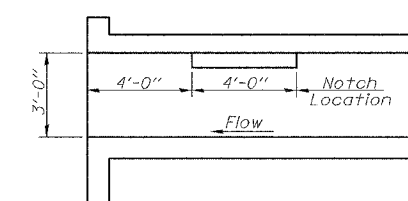


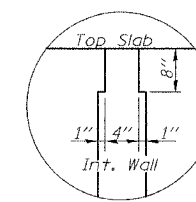
ROUTE NO.	SECTION	COUNTY	TOTAL SHEETS	SHEET NO.
F.A.P. 714	*	CHRISTIAN	94	77
FED. ROAD DIST. NO.	ILLINOIS	FED. AID PROJECT		
* D-6 IL. 48 IMPROVEMENT 2006				



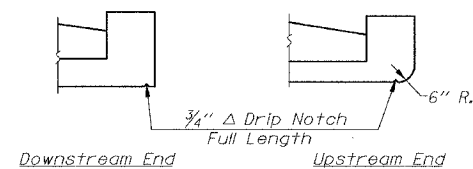
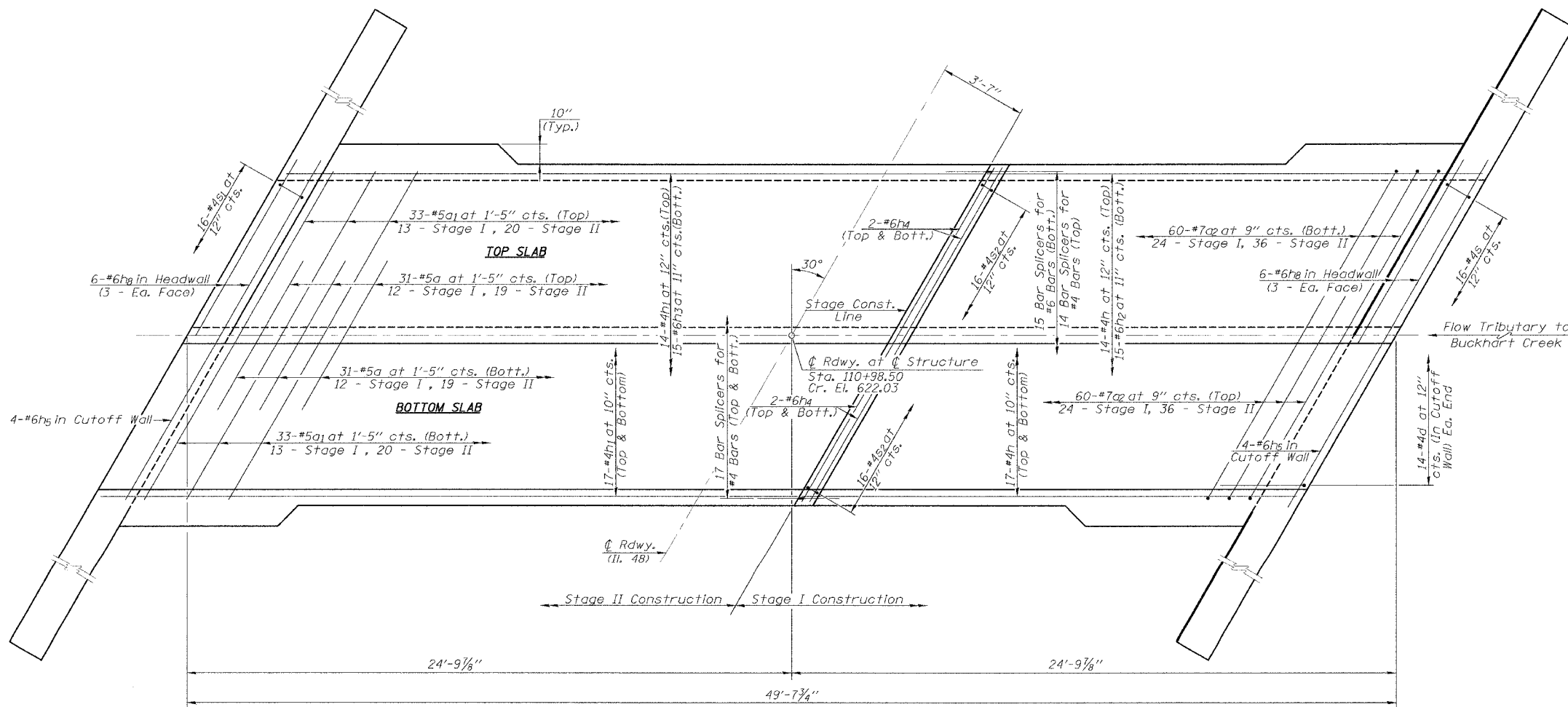
HALF SECTION THRU BARREL  
 HALF SECTION END ELEVATION



LONGITUDINAL SECTION (Downstream End Only)



NOTCH DETAIL  
 Notch formed by rough finished board attached to and removed with the formwork. Do not chamfer.



DRIP NOTCH DETAIL

Work this Sheet with Sheet No. 5 of 8.

**CULVERT DETAILS**  
**IL. ROUTE 48 OVER**  
**TRIBUTARY TO BUCKHART CREEK**  
**F.A.P. ROUTE 714 - SECTION**  
**D-6 IL. 48 IMPROVEMENT 2006**  
**CHRISTIAN COUNTY**  
**STA. 110+98.50**  
**S.N. 011-7055**

FILE NAME: STRUCTURE (REV. 3/22/06)