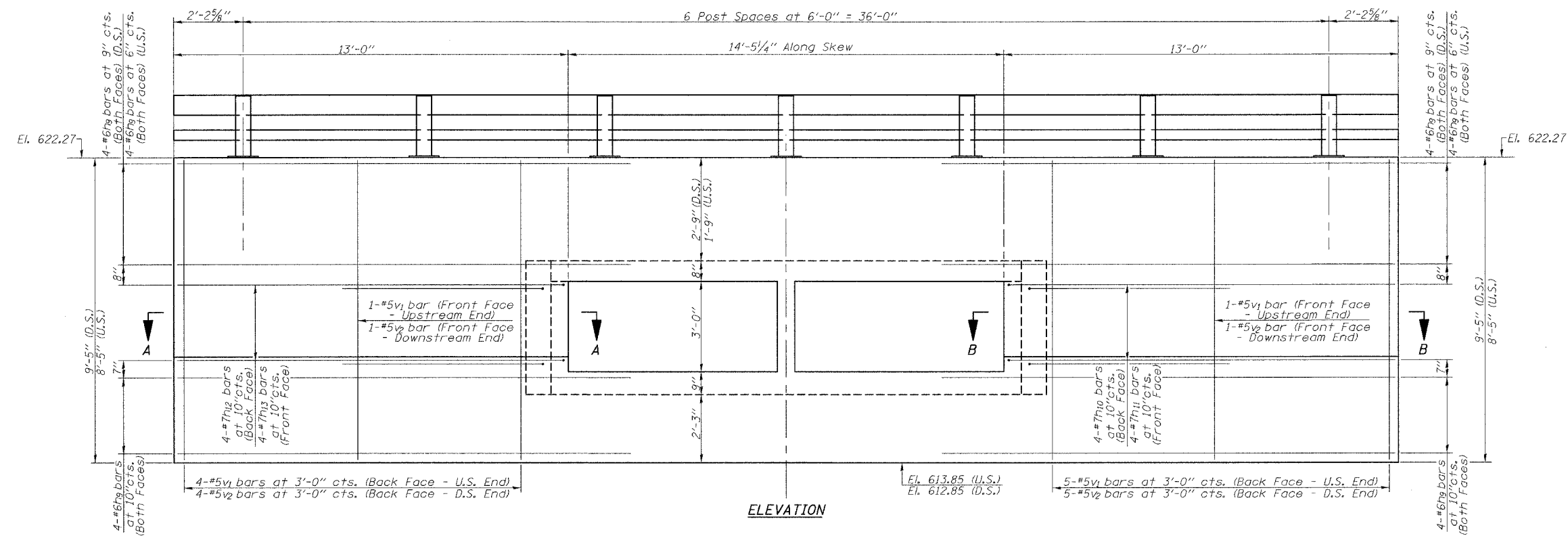
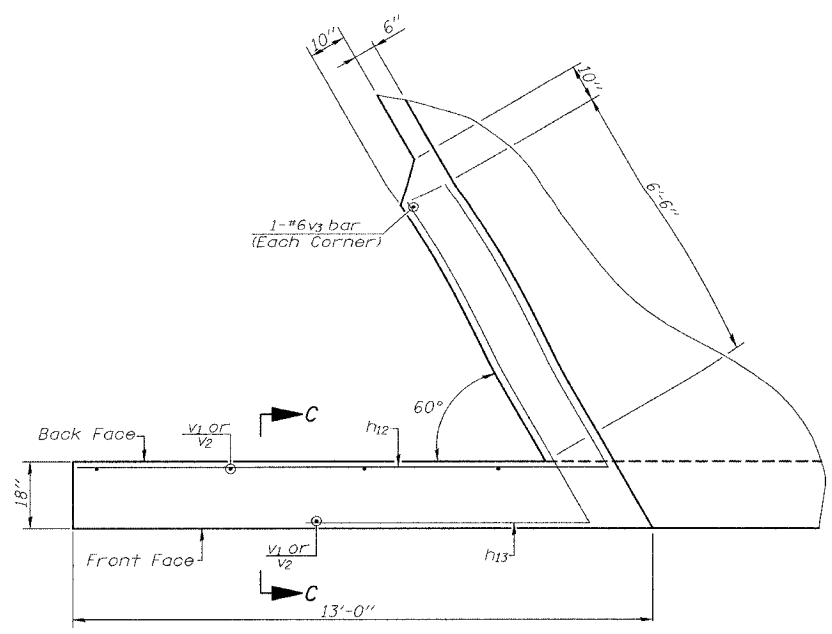


ROUTE NO.	SECTION	COUNTY	TOTAL SHEETS	SHEET NO.
F.A.P. 714		CHRISTIAN	94	78
FED. ROAD DIST. NO.	ILLINOIS	FED. AID PROJECT		
		D-6 IL. 48 IMPROVEMENT 2006		

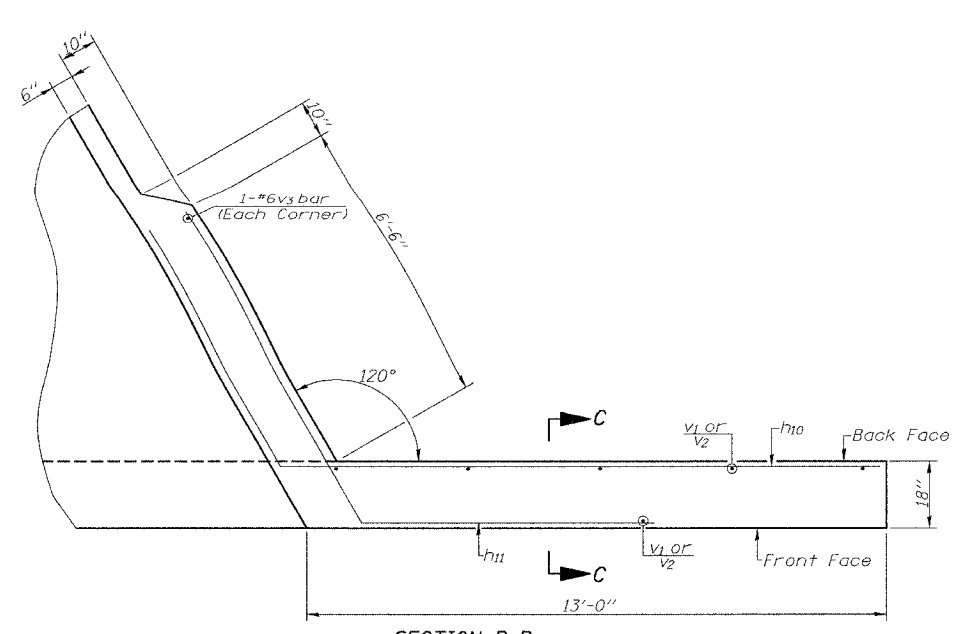
SHEET NO. 5  
OF 8 SHEETS



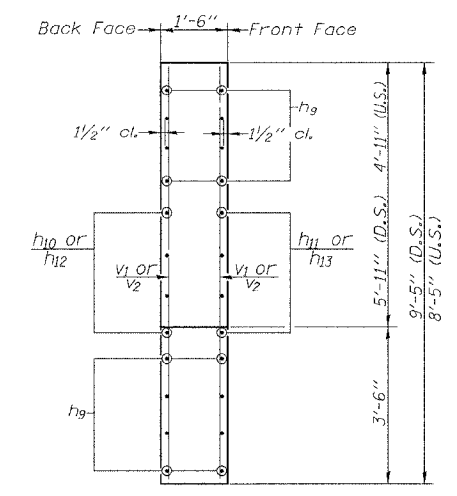
ELEVATION



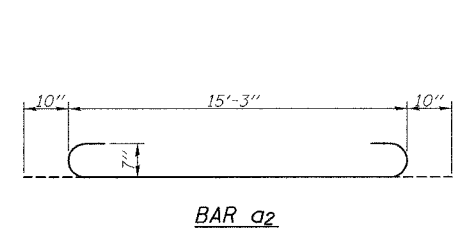
SECTION A-A



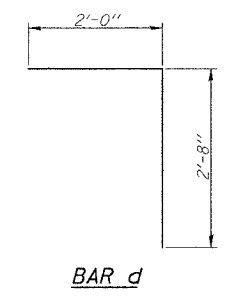
SECTION B-B



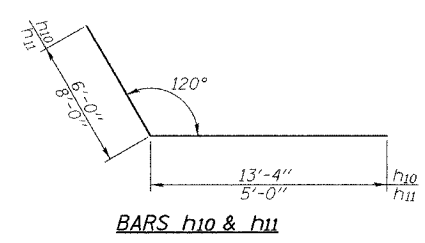
SEC. C-C



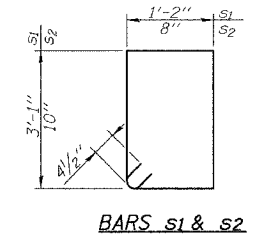
BAR a2



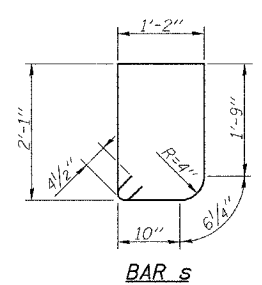
BAR d



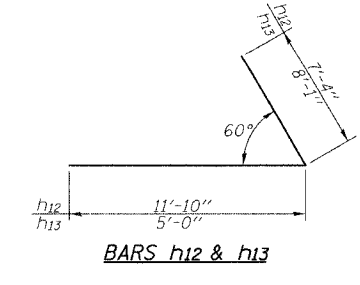
BARS h10 & h11



BARS s1 & s2



BAR s



BARS h12 & h13

BILL OF MATERIAL

Bar	No.	Size	Length	Shape
a	62	#5	9'-0"	
a1	66	#5	15'-3"	
a2	120	#7	16'-11"	
d	28	#4	4'-8"	
h	48	#4	20'-4"	
h1	48	#4	28'-7"	
h2	15	#6	20'-4"	
h3	15	#6	28'-7"	
h4	8	#6	15'-3"	
h5	8	#6	16'-0"	
h6	12	#5	20'-4"	
h7	12	#5	28'-7"	
h8	12	#6	20'-0"	
h9	64	#6	16'-0"	
h10	8	#7	19'-4"	
h11	8	#7	13'-0"	
h12	8	#7	19'-2"	
h13	8	#7	13'-1"	
s	16	#4	7'-1"	
s1	16	#4	9'-3"	
s2	32	#4	3'-9"	
v	201	#4	4'-1"	
v1	11	#5	8'-1"	
v2	11	#5	9'-1"	
v3	4	#6	4'-1"	
Concrete Box Culverts			Cu. Yd.	80.2
Reinforcement Bars			Pound	13505
Bar Splacers			Each	75

Work this sheet with Sheet No. 4 of 8.

CULVERT DETAILS  
 IL. ROUTE 48 OVER  
 TRIBUTARY TO BUCKHART CREEK  
 F.A.P. ROUTE 714 - SECTION  
 D-6 IL. 48 IMPROVEMENT 2006  
 CHRISTIAN COUNTY  
 STA. 110+98.50  
 S.N. 011-7055