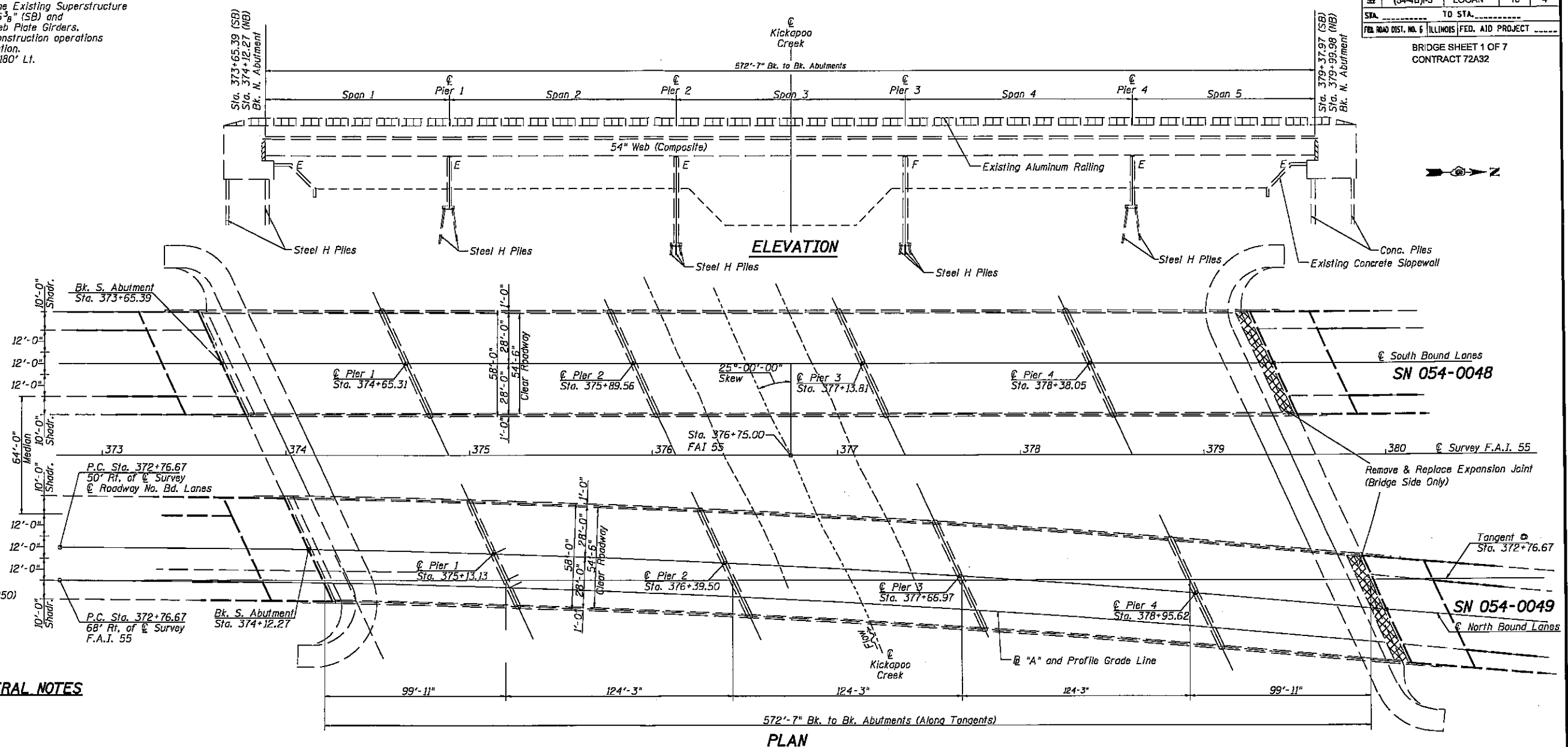


Existing Structure: SN 054-0048 (SB) and 054-0049 (NB)  
 Built as F.A.I.-55, Section 54-4B in 1973. The Existing Superstructure consists of a Reinforced Concrete Deck 56B'-6<sup>3</sup>/<sub>8</sub>" (SB) and 585'-6<sup>3</sup>/<sub>8</sub>" (NB) long and 58'-0" wide on 54" Web Plate Girders. Traffic to be maintained during repair and reconstruction operations on both structures by means of Stage Construction. B.M. # 24 - 6" Bolt Spike in 18" Cottonwood 180' Lt. Sta. 375+80, Elev. 551.83

F.A.I. DIST.	SECTION	COUNTY	TOTAL SHEETS	SHEET NO.
55	(54-4B)-3	LOGAN	10	4

BRIDGE SHEET 1 OF 7  
 CONTRACT 72A32



**DESIGN SPECIFICATIONS**  
 1996 AASHTO with 1997 & 1998 Interims.

**DESIGN STRESSES**  
 $f'_c = 3,500$  psi (New Concrete)  
 $f_y = 60,000$  psi (New Reinforcement)  
 $f_y = 50,000$  psi (New Structural Steel M270 GR50)  
 $f_y = 36,000$  psi (Existing ASTM A-36 Steel)

**GENERAL NOTES**

Plan dimensions and details relative to existing structure have been taken from existing plans and are subject to nominal construction variations. It shall be the Contractor's responsibility to verify such dimensions and details in the field and make necessary approved adjustments prior to construction or ordering of materials. Such variations shall not be cause for additional compensation for a change in the scope of the work, however, the Contractor will be paid for the quantity actually furnished at the unit bid price for the work.

Prior to pouring the new concrete deck, all loose rust, loose mill scale, and other loose potentially detrimental foreign material shall be removed from the surfaces of the beams or girders in contact with concrete. The cost of this work will be included in the pay item covering removal of existing concrete. All heavy rust and other tightly adhered potentially detrimental foreign matter shall also be removed from the surfaces of the beams or girders in contact with concrete. Tightly adhered paint may remain unless otherwise noted. This removal shall be accomplished by methods that will not damage the steel. The cost of this work will be paid for according to Article 109.04 of the Standard Specifications.

The existing structural steel coating contains lead. The Contractor should take appropriate precautions to deal with the presence of lead on this project.

Joint openings shall be adjusted according to Article 503.10(c) of the Standard Specifications when the deck is poured at an ambient temperature other than 50°F.

**BILL OF MATERIAL**

Item	Unit	Qty.
Conc. Rem.	Cu. Yd.	16.3
Bar Splicers	Each	24
Silicone Jt. Sealer	Feet	126
Polymer Concrete	Cu. Ft.	4.6
Concrete Superstruc.	Cu. Yd.	16.1
Reinforcement Bars, Epoxy Coated	Pound	2020

Reinforcement bars designated (E) shall be epoxy coated.

NOT TO SCALE

**STATE OF ILLINOIS**  
**DEPARTMENT OF TRANSPORTATION**  
**GENERAL PLAN AND ELEVATION**

F.A.I. ROUTE 55 OVER  
 KICKAPOO CREEK  
 LOGAN COUNTY  
 SECTION (54-4B)-3  
 STATION 376+75.00  
 STRUCTURE No. 054-0048 &  
 STRUCTURE No. 054-0049