

F.A. RTE.	SECTION	COUNTY	TOTAL SHEETS	SHEET NO.
*	**	EFFINGHAM	12	1

• VARIOUS
 •• D7 SIGNAL MODERNIZATION 2006-1

D-97-015-05

STATE OF ILLINOIS
 DEPARTMENT OF TRANSPORTATION
 DIVISION OF HIGHWAYS

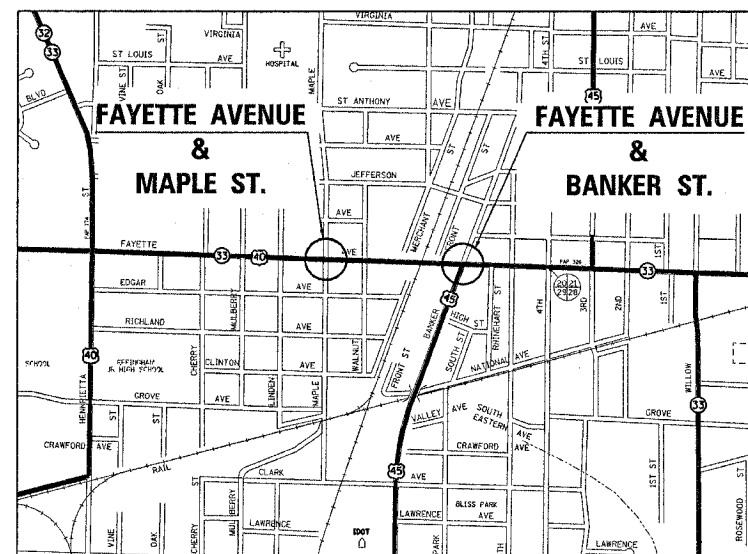
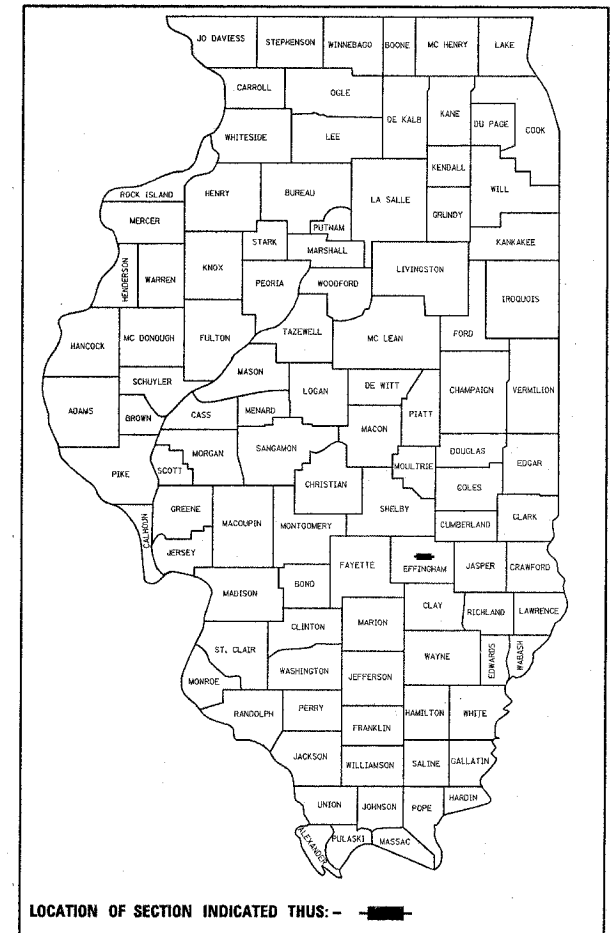
**PROPOSED
 HIGHWAY PLANS**

FAP 95 (IL 33) & MAPLE ST.
 FAP 95 (IL 33) & BANKER ST.

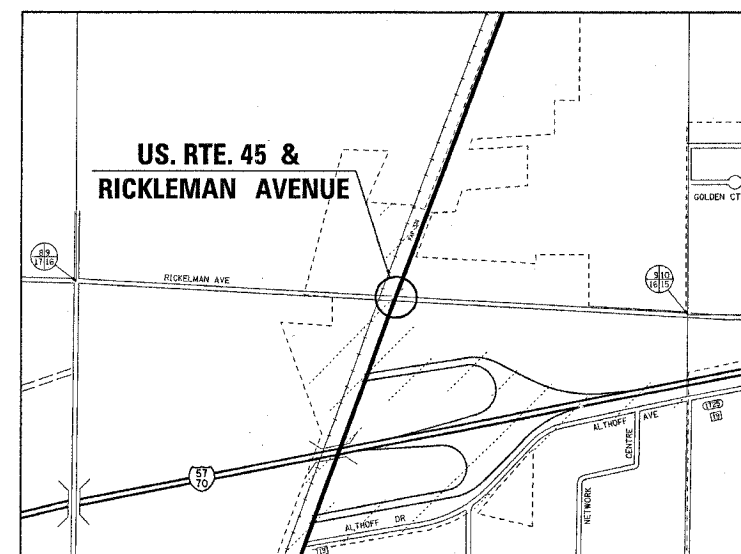
PROJECT: HS-0005(487)

&
 FAU 8379 (US 45) & RICKLEMAN AVE.
 SECTION D7 SIGNAL MODERNIZATION 2006-1
 EFFINGHAM COUNTY
 C-97-046-05

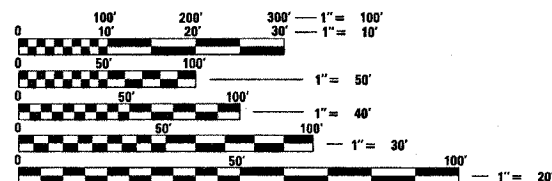
FOR INDEX OF SHEETS, SEE SHEET NO. 2



CITY OF EFFINGHAM
 FAYETTE & MAPLE ST.
 FAYETTE & BANKER ST.



CITY OF EFFINGHAM
 US. 45 & RICKLEMAN



FULL SIZE PLANS HAVE BEEN PREPARED USING STANDARD ENGINEERING SCALES. REDUCED SIZED PLANS WILL NOT CONFORM TO STANDARD SCALES. IN MAKING MEASUREMENTS ON REDUCED PLANS, THE ABOVE SCALES MAY BE USED.

J.U.L.I.E.
 JOINT UTILITY LOCATION INFORMATION FOR EXCAVATION
 1-800-892-0123

CONTRACT NO. 74087

PROJECT ENGINEER: ROB MACKLIN
 DESIGNER: LYNN MCCLELLAN
 TELEPHONE: (217) 342-3951 EXT. 245

STATE OF ILLINOIS
 DEPARTMENT OF TRANSPORTATION
 DIVISION OF HIGHWAYS

SUBMITTED MARCH 27, 2006
Christi H. Reed
 DEPUTY DIRECTOR OF HIGHWAYS, REGION ENGINEER

May 12, 2006
Mike June
 ENGINEER OF DESIGN AND ENVIRONMENT

May 12, 2006
Milton R. Sears, P.E.
 DIRECTOR OF HIGHWAYS, CHIEF ENGINEER

PRINTED BY THE AUTHORITY
 OF THE STATE OF ILLINOIS