



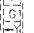




F.A. RTE.	SECTION	COUNTY	TOTAL SHEETS	SHEET NO.
		EFFINGHAM	12	6
STA. TO STA.		ILLINOIS FED. AID PROJECT		
FED. ROAD DIST. NO.		• 07 SIGNAL MODERNIZATION 2006-1		

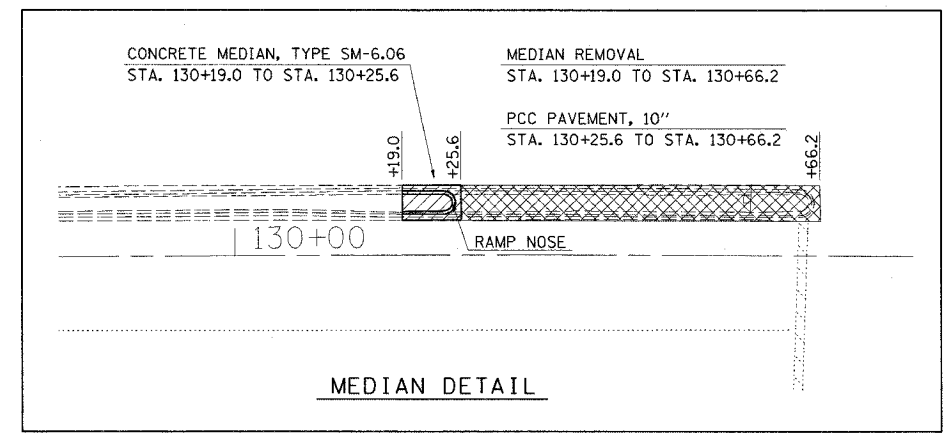
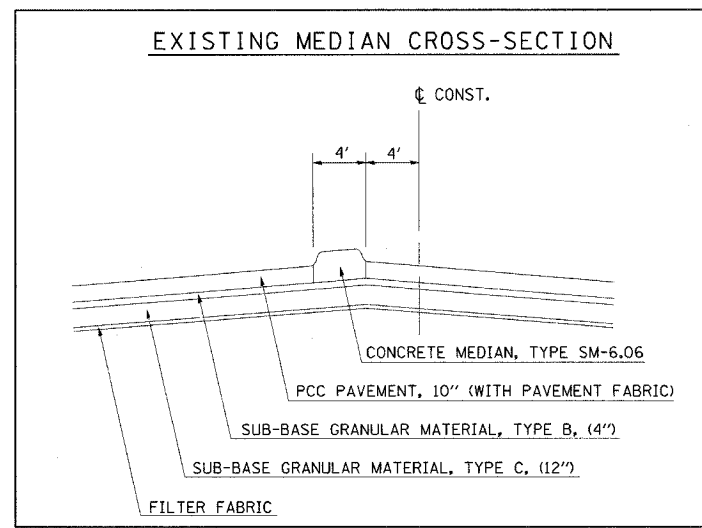
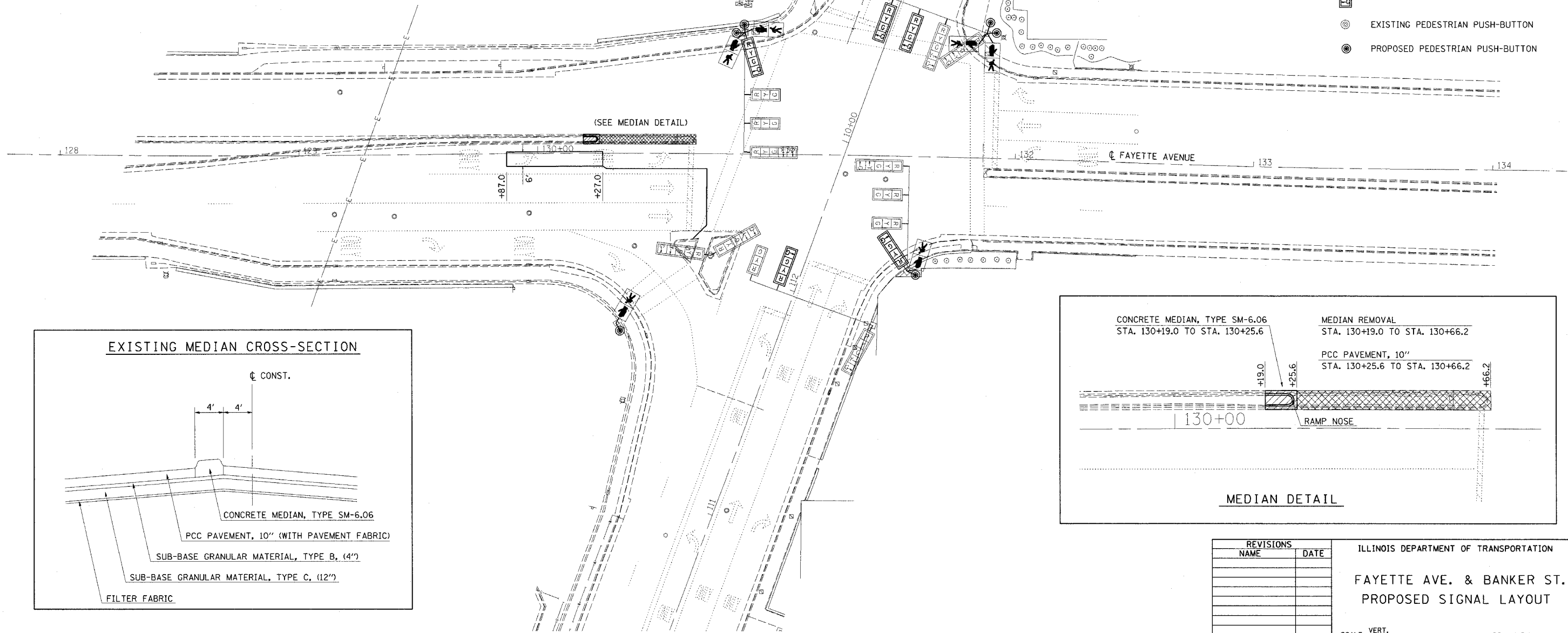
BILL OF MATERIALS

FAYETTE AVENUE & BANKER STREET

ITEM	UNIT	QUANTITY
ELECTRIC CABLE IN CONDUIT, 600V (XLP-TYPE USE) 3-1/C NO. 10	FOOT	54.0
STEEL COMBINATION MAST ARM ASSEMBLY AND POLE, 32 FT.	EACH	1.0
CONCRETE FOUNDATION, TYPE E, 36 INCH DIAMETER	FOOT	15.0
TRAFFIC SIGNAL BACKPLATE, LOUVERED, FORMED PLASTIC	EACH	17.0
DETECTOR LOOP, TYPE 1	FOOT	166.0
PEDESTRIAN PUSH BUTTON	EACH	6.0
MODIFY EXISTING CONTROLLER CABINET	EACH	1.0
REMOVE EXISTING TRAFFIC SIGNAL EQUIPMENT	EACH	1.0
LED SIGNAL FACE RETROFIT, RED BALL	EACH	12.0
LED SIGNAL FACE RETROFIT, GREEN BALL	EACH	12.0
LED SIGNAL FACE RETROFIT, YELLOW BALL	EACH	12.0
LED SIGNAL FACE RETROFIT, YELLOW ARROW	EACH	7.0
LED SIGNAL FACE RETROFIT, GREEN ARROW	EACH	7.0
LED SIGNAL FACE RETROFIT, WALK SIGNAL	EACH	6.0
LED SIGNAL FACE RETROFIT, DON'T WALK SIGNAL	EACH	6.0
SIGNAL HEAD, POLYCARBONATE, LED, 1-FACE, 4-SECTION, BRACKET MOUNTED	EACH	2.0
SIGNAL HEAD, POLYCARBONATE, LED, 1-FACE, 4-SECTION, MAST ARM MOUNTED	EACH	3.0

LEGEND

-  EXISTING PEDESTRIAN SIGNAL HEAD
-  LED RETROFIT PEDESTRIAN SIGNAL HEAD
-  EXISTING TRAFFIC SIGNAL W/BACKPLATE
-  LED RETROFIT TRAFFIC SIGNAL W/BACKPLATE
-  PROPOSED TRAFFIC SIGNAL W/BACKPLATE
-  EXISTING PEDESTRIAN PUSH-BUTTON
-  PROPOSED PEDESTRIAN PUSH-BUTTON



PLOT DATE = 3/24/2006
 FILE NAME = #FILE#
 PLOT SCALE = #SCALE#
 USER NAME = #USER#

REVISIONS	
NAME	DATE

ILLINOIS DEPARTMENT OF TRANSPORTATION
FAYETTE AVE. & BANKER ST.
 PROPOSED SIGNAL LAYOUT

SCALE: VERT. _____
 HORIZ. _____

DATE _____ DRAWN BY _____
 CHECKED BY _____