

F.A. RTE.	SECTION	COUNTY	TOTAL SHEETS	SHEET NO.
*	**	EFFINGHAM	12	1

• VARIOUS
 •• D7 SIGNAL MODERNIZATION 2006-1

D-97-015-05

STATE OF ILLINOIS
 DEPARTMENT OF TRANSPORTATION
 DIVISION OF HIGHWAYS

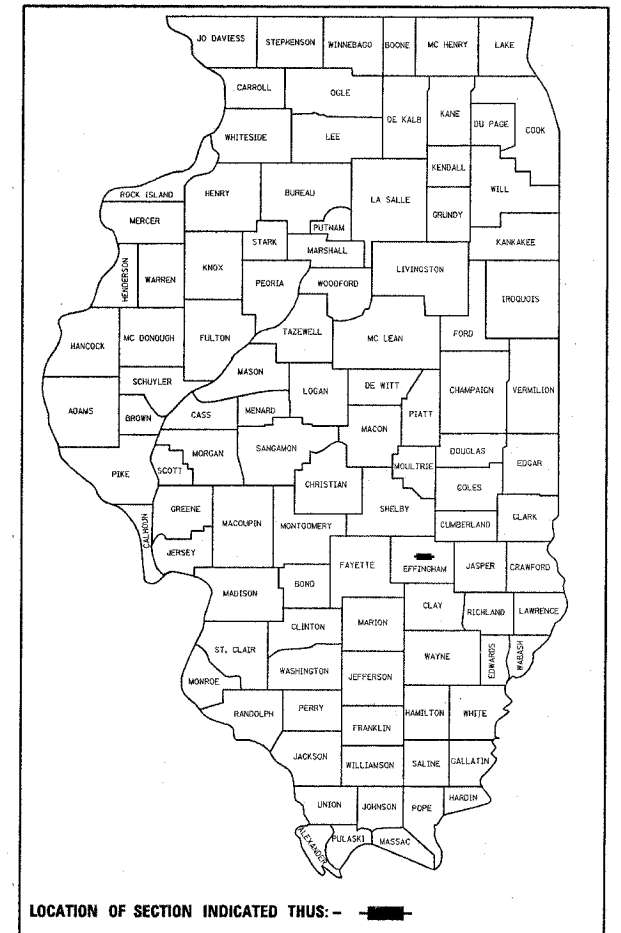
**PROPOSED
 HIGHWAY PLANS**

FAP 95 (IL 33) & MAPLE ST.
 FAP 95 (IL 33) & BANKER ST.

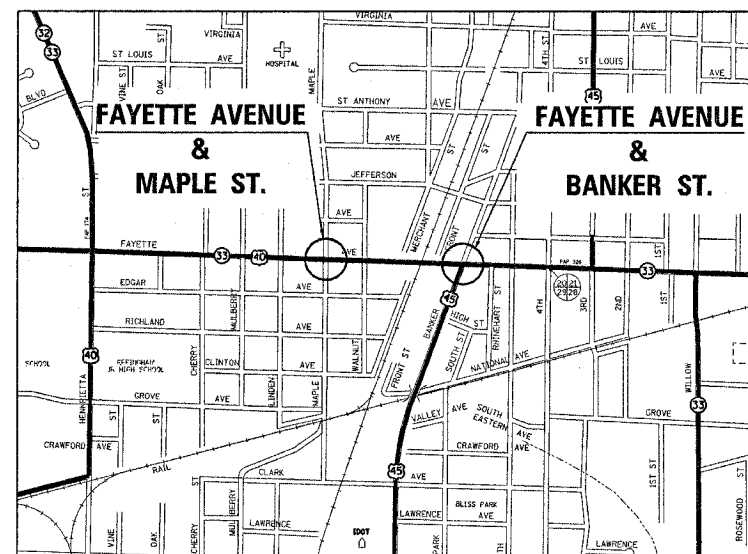
PROJECT: HS-0005(487)

FAU 8379 (US 45) & RICKLEMAN AVE.
 SECTION D7 SIGNAL MODERNIZATION 2006-1
 EFFINGHAM COUNTY
 C-97-046-05

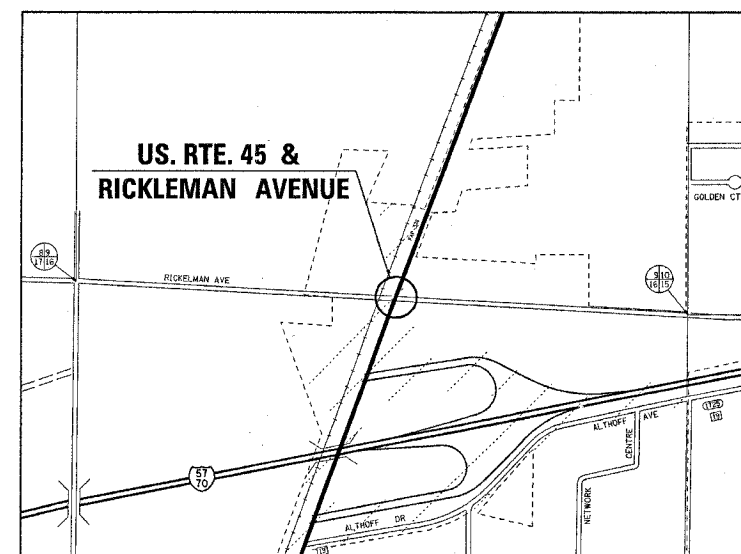
FOR INDEX OF SHEETS, SEE SHEET NO. 2



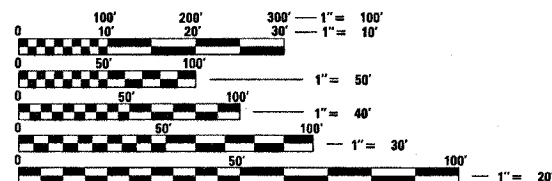
LOCATION OF SECTION INDICATED THIS: - [black box] -



CITY OF EFFINGHAM
 FAYETTE & MAPLE ST.
 FAYETTE & BANKER ST.



CITY OF EFFINGHAM
 US. 45 & RICKLEMAN



FULL SIZE PLANS HAVE BEEN PREPARED USING STANDARD ENGINEERING SCALES. REDUCED SIZED PLANS WILL NOT CONFORM TO STANDARD SCALES. IN MAKING MEASUREMENTS ON REDUCED PLANS, THE ABOVE SCALES MAY BE USED.

J.U.L.I.E.
 JOINT UTILITY LOCATION INFORMATION FOR EXCAVATION
 1-800-892-0123

CONTRACT NO. 74087

PROJECT ENGINEER: ROB MACKLIN
 DESIGNER: LYNN MCCLELLAN
 TELEPHONE: (217) 342-3951 EXT. 245

STATE OF ILLINOIS
 DEPARTMENT OF TRANSPORTATION
 DIVISION OF HIGHWAYS

SUBMITTED MARCH 27, 2006
Christ H. Reed
 DEPUTY DIRECTOR OF HIGHWAYS, REGION ENGINEER

May 12, 2006
Mike June
 ENGINEER OF DESIGN AND ENVIRONMENT

May 12, 2006
Milton R. Seas, P.E.
 DIRECTOR OF HIGHWAYS, CHIEF ENGINEER

PRINTED BY THE AUTHORITY
 OF THE STATE OF ILLINOIS

F.A. RTE.	SECTION	COUNTY	TOTAL SHEETS	SHEET NO.
	*	EFFINGHAM	12	2
STA.		TO STA.		
FED. ROAD DIST. NO.	ILLINOIS	FED. AID PROJECT		

* 07 SIGNAL MODERNIZATION 2006-1

GENERAL NOTES

THIS SECTION SHALL BE CONSTRUCTED IN ACCORDANCE WITH THE PLANS, THE "STANDARD SPECIFICATIONS FOR ROAD AND BRIDGE CONSTRUCTION", ADOPTED JANUARY 1, 2002; THE "SUPPLEMENTAL SPECIFICATIONS AND RECURRING SPECIAL PROVISIONS" ADOPTED JANUARY 1, 2004; AND "THE SPECIAL PROVISIONS" INCLUDED IN THE PROPOSAL.

THIS PROJECT IS LOCATED AT THE INTERSECTION OF FAP 95 (IL 33-FAYETTE AVENUE) & BANKER STREET, FAP 95 (IL 33-FAYETTE AVENUE) & MAPLE STREET AND FAU 8379 (US 45) & RICKLEMAN AVENUE ALL IN THE CITY OF EFFINGHAM, IN EFFINGHAM COUNTY. THE WORK INCLUDED IN THIS SECTION CONSISTS OF MEDIAN REMOVAL AND PAVEMENT REPLACEMENT, INSTALLING TRAFFIC AND PEDESTRIAN SIGNALS, AN UNINTERRUPTIBLE POWER SUPPLY AND ALL OTHER WORK NECESSARY TO COMPLETE THIS SECTION.

THE CONTRACTOR SHALL VERIFY THE EXACT LOCATION OF ALL UNDERGROUND UTILITIES PRIOR TO BEGINNING CONSTRUCTION. CALL J.U.L.I.E. AT 1-800-892-0123.

THE LOCATION OF ALL TRAFFIC COMPONENTS AS SHOWN ON THE PLANS ARE APPROXIMATE ONLY. THE FINAL LOCATION SHALL BE DETERMINED BY THE ENGINEER IN THE FIELD.

A 2 FOOT MINIMUM, 6 FOOT DESIRABLE, HORIZONTAL CLEARANCE SHALL BE MAINTAINED FROM THE BACK OF CURB TO THE EDGE OF HANDHOLES, JUNCTION BOXES AND SIGNAL POST FOUNDATIONS. A 5 FOOT MINIMUM HORIZONTAL CLEARANCE SHALL BE MAINTAINED FROM THE BACK OF THE CURB TO ALL MAST ARM FOUNDATIONS. CONTROLLER FOUNDATIONS SHALL BE LOCATED AS FAR FROM THE BACK OF THE CURB AS POSSIBLE TO PROTECT THE CONTROLLER CABINET.

ALL HARDWARE SHALL BE TIGHTENED AND WELL SECURED. CABLES SHALL BE NEATLY WOUND IN HANDHOLES. CABLES SHALL BE NEATLY TRAINED IN THE CONTROLLER CABINET.

ALL THREADS OF BOLTS USED IN ASSEMBLY OF TRAFFIC SIGNAL COMPONENTS SHALL BE COATED WITH A NON-LEAD BASED ANTI-SEIZE COMPOUND, SIMILAR TO LEAD PLATE, PRIOR TO ASSEMBLY.

NO ADDITIONAL COMPENSATION WILL BE ALLOWED FOR PLACING CONDUIT AT GREATER THAN 2 FOOT MINIMUM DEPTH TO AVOID OBSTACLES SUCH AS UNDERGROUND UTILITIES.

THE CONTRACTOR IS RESPONSIBLE FOR UNCOVERING OR HAND DIGGING AROUND UTILITIES AS NECESSARY. THE COST OF THIS WORK IS TO BE INCLUDED WITH THE TRENCH AND BACKFILL FOR ELECTRICAL WORK PAY ITEM.

THE NUMBER OF CONDUCTORS FOR ELECTRIC CABLES AS SHOWN ON THE PLANS SHALL BE THE MINIMUM NUMBER OF CONDUCTORS FURNISHED FOR EACH LOCATION. THE CONTRACTOR MAY SUBSTITUTE AN ELECTRIC CABLE WITH MORE CONDUCTORS THAN SPECIFIED BUT NO ADDITIONAL COMPENSATION WILL BE MADE FOR THE EXTRA CONDUCTORS.

GENERAL NOTES (Cont'd)

ALL NEW TRAFFIC AND PEDESTRIAN SIGNAL WIRING SHALL EXTEND FROM CONTROLLER TO SIGNAL. SPLICES IN HANDHOLES WILL NOT BE ALLOWED.

ALL MAST ARM MOUNTED SIGNAL HEADS ON AN INDIVIDUAL MAST ARM SHALL BE MOUNTED SO THAT THE RED INDICATIONS ARE LEVEL WITH EACH OTHER.

ALL TRAFFIC SIGNAL MAST ARM ASSEMBLIES (STANDARD, COMBINATION, OR DUAL) MUST BE DESIGNED FOR THE LOADINGS SHOWN ON THE HIGHWAY STANDARDS OR THESE SIGNAL PLANS, WHICHEVER IS GREATER.

THE LUMINAIRE ARM LENGTH ON THE COMBINATION MAST ARM ASSEMBLY ON BANKER STREET (STA. 106+44.8) SHALL BE 6'. THE LUMINAIRE ARM SHALL BE SITUATED SO THAT IT PROTRUDES FROM THE POLE IN THE SAME DIRECTION AS THE MAST ARM. THE LUMINAIRE MOUNTING HEIGHT SHALL BE 35 FEET. THE EXISTING LUMINAIRE POLE, FOUNDATION AND LUMINAIRE SHALL BE REMOVED AND SALVAGED BY AMERENCIPS FORCES. THE CONTRACTOR SHALL INSTALL THE SALVAGED LUMINAIRE ON THE MAST ARM AND PULL THE WIRING FROM THE LUMINAIRE DOWN THE MAST ARM AND LEAVE THE SLACK COILED AT THE FOUNDATION. AMERENCIPS WILL MAKE THE FINAL CONNECTION AT THE BASE OF THE MAST ARM.

THERE ARE 14 EXISTING LOAD SWITCHES AT THE INTERSECTION OF FAYETTE & BANKER AND 10 EXISTING LOAD SWITCHES AT THE INTERSECTION OF FAYETTE AVENUE & MAPLE STREET THAT WILL ALL NEED TO BE REMOVED AND REPLACED.

THIS WORK SHALL BE DONE IN ACCORDANCE WITH THE APPLICABLE PORTION OF SECTION 895 OF THE STANDARD SPECIFICATIONS. THERE ARE 5 EXISTING TRAFFIC SIGNAL HEADS AT THE INTERSECTION OF FAYETTE AVENUE & BANKER STREET AND 10 EXISTING TRAFFIC SIGNAL HEADS AT THE INTERSECTION OF FAYETTE AVENUE & MAPLE STREET THAT SHALL BECOME THE PROPERTY OF THE CITY OF EFFINGHAM. THE CONTRACTOR SHALL SAVE HARMLESS AND DELIVER THE EQUIPMENT TO:

EFFINGHAM ELECTRIC SHOP, INC
1301 S. BANKER ST
EFFINGHAM, IL 62401
217-342-3474

CITY OF EFFINGHAM CONTACT:

GREG KOESTER-ENGINEERING TECHNICIAN
CITY OF EFFINGHAM
217-342-5303

INDEX OF SHEETS

1	COVER SHEET
2	INDEX OF SHEETS AND GENERAL NOTES
3	SUMMARY OF QUANTITIES
4	PAVEMENT MARKING SCHEDULE-FAYETTE & BANKER
5	EXISTING SIGNAL LAYOUT-FAYETTE & BANKER
6	PROPOSED SIGNAL LAYOUT-FAYETTE & BANKER
7	PROPOSED PAVEMENT MARKING LAYOUT-FAYETTE & BANKER
8	EXISTING SIGNAL LAYOUT-FAYETTE & MAPLE
9	PROPOSED SIGNAL LAYOUT-FAYETTE & MAPLE
10	PROPOSED CABLE LAYOUT-FAYETTE & MAPLE
11	INTERSECTION OF US 45 & RICKLEMAN AVENUE
12	BORING LOGS

STANDARDS IN THE PLANS

THE FOLLOWING STANDARDS ARE A PART OF THESE PLANS AND ARE INCLUDED AFTER SHEET NO. 12:

000001-04	STANDARD SYMBOLS, ABBREVIATIONS AND PATTERNS
420601-04	24' PCC PAVEMENT
420701-01	PAVEMENT FABRIC
701006-02	OFF-ROAD OPERATIONS, 2L, 2W, 15' TO 2' FROM EDGE OF PAVEMENT
701501-03	URBAN LANE CLOSURE, 2L, 2W, UNDIVIDED
701606-04	URBAN LANE CLOSURE, MULTILANE, 2W W/ MOUNTABLE MEDIAN
701701-04	URBAN LANE CLOSURE, MULTILANE INTERSECTION
701801-03	SIDEWALK CLOSURE
702001-06	TRAFFIC CONTROL DEVICES
720001	SIGN PANEL MOUNTING DETAILS
857001	STANDARD PHASE DESIGNATION DIAGRAMS AND PHASE SEQUENCES
862001	UNINTERRUPTIBLE POWER SUPPLY
873001	TRAFFIC SIGNAL GROUNDING
877001-02	STEEL MAST ARM ASSEMBLY AND POLE
878001-04	CONCRETE FOUNDATION DETAILS
880006	TRAFFIC SIGNAL MOUNTING DETAILS
886001	DETECTOR LOOP INSTALLATIONS
886006	TYPICAL LAYOUTS FOR DETECTION LOOPS
780001-01	

PLOT DATE = 3/24/2006
FILE NAME = 07E1E1A
PLOT SCALE = 1/8"=1'-0"
USER NAME = dstrout

REVISIONS		ILLINOIS DEPARTMENT OF TRANSPORTATION
NAME	DATE	
		<p style="text-align: center;">GENERAL NOTES INDEX OF SHEETS STANDARDS IN THE PLANS</p> <p>SCALE: VERT. DRAWN BY HORIZ. CHECKED BY</p> <p>DATE</p>

Rev.

F.A. RTE.	SECTION	COUNTY	TOTAL SHEETS	SHEET NO.
	*	EFFINGHAM	12	3
STA.		TO STA.		
FED. ROAD DIST. NO.	ILLINOIS	FED. AID PROJECT		

SUMMARY OF QUANTITIES

SUMMARY OF QUANTITIES			URBAN TOTAL QUANTITIES	CONSTRUCTION TYPE CODE		
CODE NO	ITEM	UNIT		90% FED. 7.5% STATE 2.5% CITY Y031-IF BANKER ST. & FAYETTE AVE.	90% FED. 5% STATE 5% CITY Y031-IF MAPLE ST. & FAYETTE AVE.	Y031-IF RICKLEMAN AVE. & U.S. RTE. 45
* 42000500	PORTLAND CEMENT CONCRETE PAVEMENT 10"	SQ YD	18	18		
* 42001200	PAVEMENT FABRIC	SQ YD	18	18		
* 42400100	PORTLAND CEMENT CONCRETE SIDEWALK 4 INCH	SQ FT	60		60	
* 44000600	SIDEWALK REMOVAL	SQ FT	60		60	
* 44003100	MEDIAN REMOVAL	SQ FT	189	189		
* 60622400	CONCRETE MEDIAN, TYPE SM-6.06	SQ FT	27	27		
67100100	MOBILIZATION	L SUM	1	0.34	0.33	0.33
70102620	TRAFFIC CONTROL AND PROTECTION, STANDARD 701501	L SUM	1		1	
70102625	TRAFFIC CONTROL AND PROTECTION, STANDARD 701606	L SUM	1	1		
70102635	TRAFFIC CONTROL AND PROTECTION, STANDARD 701701	L SUM	1	0.5	0.5	
70102640	TRAFFIC CONTROL AND PROTECTION, STANDARD 701801	L SUM	1		1	
* 78005100	EPOXY PAVEMENT MARKING - LETTERS AND SYMBOLS	SQ FT	427	427		
* 78005110	EPOXY PAVEMENT MARKING - LINE 4"	FOOT	1212	1212		
* 78005130	EPOXY PAVEMENT MARKING - LINE 6"	FOOT	2050	2050		
* 78005150	EPOXY PAVEMENT MARKING - LINE 12"	FOOT	101	101		
* 78005180	EPOXY PAVEMENT MARKING - LINE 24"	FOOT	191	191		
78300100	PAVEMENT MARKING REMOVAL	SQ FT	693	693		
81012600	CONDUIT IN TRENCH, 2" DIA., PVC	FOOT	25		25	
81500200	TRENCH AND BACKFILL FOR ELECTRICAL WORK	FOOT	25		25	
81702450	ELECTRIC CABLE IN CONDUIT, 600V (XLP-TYPE USE) 3-1/C NO. 10	FOOT	54	54		
86200300	UNINTERRUPTIBLE POWER SUPPLY, EXTENDED	EACH	1			1
87301245	ELECTRIC CABLE IN CONDUIT, SIGNAL NO. 14 5C	FOOT	318		318	
87301255	ELECTRIC CABLE IN CONDUIT, SIGNAL NO. 14 7C	FOOT	317		317	
87502660	TRAFFIC SIGNAL POST, ALUMINUM 12 FT.	EACH	1		1	
87502720	TRAFFIC SIGNAL POST, ALUMINUM 18 FT.	EACH	2		2	
87700170	STEEL MAST ARM ASSEMBLY AND POLE, 26 FT.	EACH	1		1	
87702890	STEEL COMBINATION MAST ARM ASSEMBLY AND POLE 32 FT.	EACH	1	1		
87800100	CONCRETE FOUNDATION, TYPE A	FOOT	3		3	
87800400	CONCRETE FOUNDATION, TYPE E 30-INCH DIAMETER	FOOT	13.5		13.5	
87800415	CONCRETE FOUNDATION, TYPE E 36-INCH DIAMETER	FOOT	15	15		

SUMMARY OF QUANTITIES			URBAN TOTAL QUANTITIES	CONSTRUCTION TYPE CODE		
CODE NO	ITEM	UNIT		90% FED. 7.5% STATE 2.5% CITY Y031-IF BANKER ST. & FAYETTE AVE.	90% FED. 5% STATE 5% CITY Y031-IF MAPLE ST. & FAYETTE AVE.	Y031-IF RICKLEMAN AVE. & U.S. RTE. 45
88200410	TRAFFIC SIGNAL BACKPLATE, LOUVERED, FORMED PLASTIC	EACH	31	17	14	
88600100	DETECTOR LOOP, TYPE I	FOOT	166	166		
88800100	PEDESTRIAN PUSH-BUTTON	EACH	12	6	6	
89500400	RELOCATE EXISTING PEDESTRIAN PUSH-BUTTON	EACH	2		2	
89502210	MODIFY EXISTING CONTROLLER CABINET	EACH	2	1	1	
89502300	REMOVE ELECTRIC CABLE FROM CONDUIT	FOOT	437		437	
89502375	REMOVE EXISTING TRAFFIC SIGNAL EQUIPMENT	EACH	2	1	1	
89502385	REMOVE EXISTING CONCRETE FOUNDATION	EACH	1		1	
X0323336	LED SIGNAL FACE RETROFIT, RED BALL	EACH	12	12		
X0323337	LED SIGNAL FACE RETROFIT, GREEN BALL	EACH	12	12		
X0323418	LED SIGNAL FACE RETROFIT, YELLOW BALL	EACH	12	12		
X0323419	LED SIGNAL FACE RETROFIT, YELLOW ARROW	EACH	7	7		
X0323420	LED SIGNAL FACE RETROFIT, GREEN ARROW	EACH	7	7		
X0323421	LED SIGNAL FACE RETROFIT, WALK SIGNAL	EACH	6	6		
X0323422	LED SIGNAL FACE RETROFIT, DONT WALK SIGNAL	EACH	6	6		
X8801300	SIGNAL HEAD, POLYCARBONATE, LED, 1-FACE, 3-SECTION, BRACKET MOUNTED	EACH	2		2	
X8801310	SIGNAL HEAD, POLYCARBONATE, LED, 1-FACE, 3-SECTION, MAST ARM MOUNTED	EACH	6		6	
X8801345	SIGNAL HEAD, POLYCARBONATE, LED, 1-FACE, 4-SECTION, BRACKET MOUNTED	EACH	2	2		
X8801350	SIGNAL HEAD, POLYCARBONATE, LED, 1-FACE, 4-SECTION, MAST ARM MOUNTED	EACH	3	3		
X8801400	SIGNAL HEAD, POLYCARBONATE, LED, 1-FACE, 5-SECTION, MAST ARM MOUNTED	EACH	2		2	
X8801437	SIGNAL HEAD, POLYCARBONATE, LED, 2-FACE, 1-3-SECTION, 1-5-SECTION, BRACKET MOUNTED	EACH	2		2	
X8810495	PEDESTRIAN SIGNAL HEAD, POLYCARBONATE, LED, 2-FACE, BRACKET MOUNTED	EACH	4		4	
* Z0075300	TIE BARS	EACH	38	38		

* SPECIALTY ITEMS

PLOT DATE = 3/24/2006
FILE NAME = PFILE1
SCALE = INCHES
USER NAME = gawpax

REVISIONS	
NAME	DATE

ILLINOIS DEPARTMENT OF TRANSPORTATION

SUMMARY OF QUANTITIES

SCALE: VERT. HORIZ.
DATE

DRAWN BY
CHECKED BY

F.A. RTE.	SECTION	COUNTY	TOTAL SHEETS	SHEET NO.
	*	EFFINGHAM	12	4

STA. TO STA.
 FED. ROAD DIST. NO. ILLINOIS FED. AID PROJECT

* D7 SIGNAL MODERNIZATION 2006-1

SCHEDULE OF QUANTITIES

LOCATION STATION TO STATION	LETTERS AND SYMBOLS SQ. FT.	1 4" RADIUS SKIP-YELLOW	2 4" DOUBLE YELLOW	3 6" RADIUS SKIP-WHITE	4 12" DIA. WHITE	5 6" SOLID WHITE	6 24" STOP BAR-WHITE	7 6" SKIP DASH-WHITE	8 4" SOLID YELLOW
NORTHBOUND									
RT 108+57.5	26.0 (COMB LT-THRU)								
RT 108+57.5	15.6 (RT ARROW)								
CL 109+33.5 TO CL 111+87.9			255						
LT 109+33.5 TO 111+49								60	
RT 109+53.5 TO RT 112+12.6						260			
RT 109+53.5 TO RT 112+12.6						260			
RT 109+53.5	15.6 (LT ARROW)								
RT 109+53.5	26.0 (COMB LT-THRU)								
RT 109+53.5	15.6 (RT ARROW)								
RT 110+33.5	15.6 (LT ARROW)								
RT 110+33.5	26.0 (COMB LT-THRU)								
RT 110+33.5	15.6 (RT ARROW)								
RT 111+13.5	15.6 (LT ARROW)								
RT 111+13.5	26.0 (COMB LT-THRU)								
RT 111+13.5	15.6 (RT ARROW)								
RT 111+69.8	15.6 (LT ARROW)								
RT 111+87.9							13		
RT 111+94.7	26.0 (COMB LT-THRU)								
RT 111+94.7	15.6 (RT ARROW)								
RT 112+12.6							27		
111+87.9 LT TURN RADIUS		34							
112+12.6 LT TURN RADIUS				40					
SOUTHBOUND									
10+42.2 CROSSWALK						73			
10+48.2 CROSSWALK						65			
LT 10+54.4							28		
LT 10+54.4 TO LT 11+34.4			80						
LT 10+72.4	15.6 (LT ARROW)								
LT 11+34.4	15.6 (LT ARROW)								
RT 10+54.4 TO 11+34.4								20	
EASTBOUND									
LT 129+02.1 TO LT 130+23.0							30		
CL 129+02.1 TO CL 130+25.0								250	
RT 129+02.1 TO RT 130+58.0						156			
RT 129+02.1 TO RT 130+87.1						185			
RT 129+02.1	15.6 (RT ARROW)								
RT 129+54.0 TO RT 130+58.0						106			
RT 129+54.0	15.6 (LT ARROW)								
RT 129+71.1	15.6 (RT ARROW)								
RT 130+07.0	15.6 (LT ARROW)								
RT 130+23.0							13		
RT 130+07 RT TURN RADIUS						92			
RT 130+29.7	15.6 (RT ARROW)								
RT 130+07 (DIAGONALS)					101				
RT 130+36 (STOPBAR)							15		
RT 130+40 (CROSS WALK)						28			
RT 130+43.3 (CROSS WALK)						28			
RT 130+58.0							24		
RT 130+80 (CL CROSSWALK)						83			
RT 130+85 (CL CROSSWALK)						83			
RT 130+87 (OUTER ISLAND)						68			
WESTBOUND									
131+81.2 CROSSWALK						72			
131+87.2 CROSSWALK						71			
RT 131+93.2 TO RT 133+23.2								40	
CL 131+86.5 TO CL 133+23.2									258
LT 131+93.2							41		
LT 131+93.2 TO LT 133+23.2						130			
LT 131+93.2 TO LT 133+23.2						130			
LT 132+11.2	15.6 (LT ARROW)								
LT 132+67.2	15.6 (LT ARROW)								
LT 133+23.2	15.6 (LT ARROW)								
TOTALS =	426.4	34.0	335.0	40.0	101.0	1890.0	191.0	120.0	508.0

PLOT DATE = 3/24/2006
 FILE NAME = #FILE#
 PLOT SCALE = #SCALE#
 USER NAME = #DISTRICT#

REVISIONS	
NAME	DATE

ILLINOIS DEPARTMENT OF TRANSPORTATION

**PAVEMENT MARKING
 SCHEDULE OF QUANTITIES**

SCALE: VERT. DATE
 HORIZ. DATE

DRAWN BY
 CHECKED BY




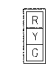
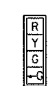


CONTRACT NO. 74087

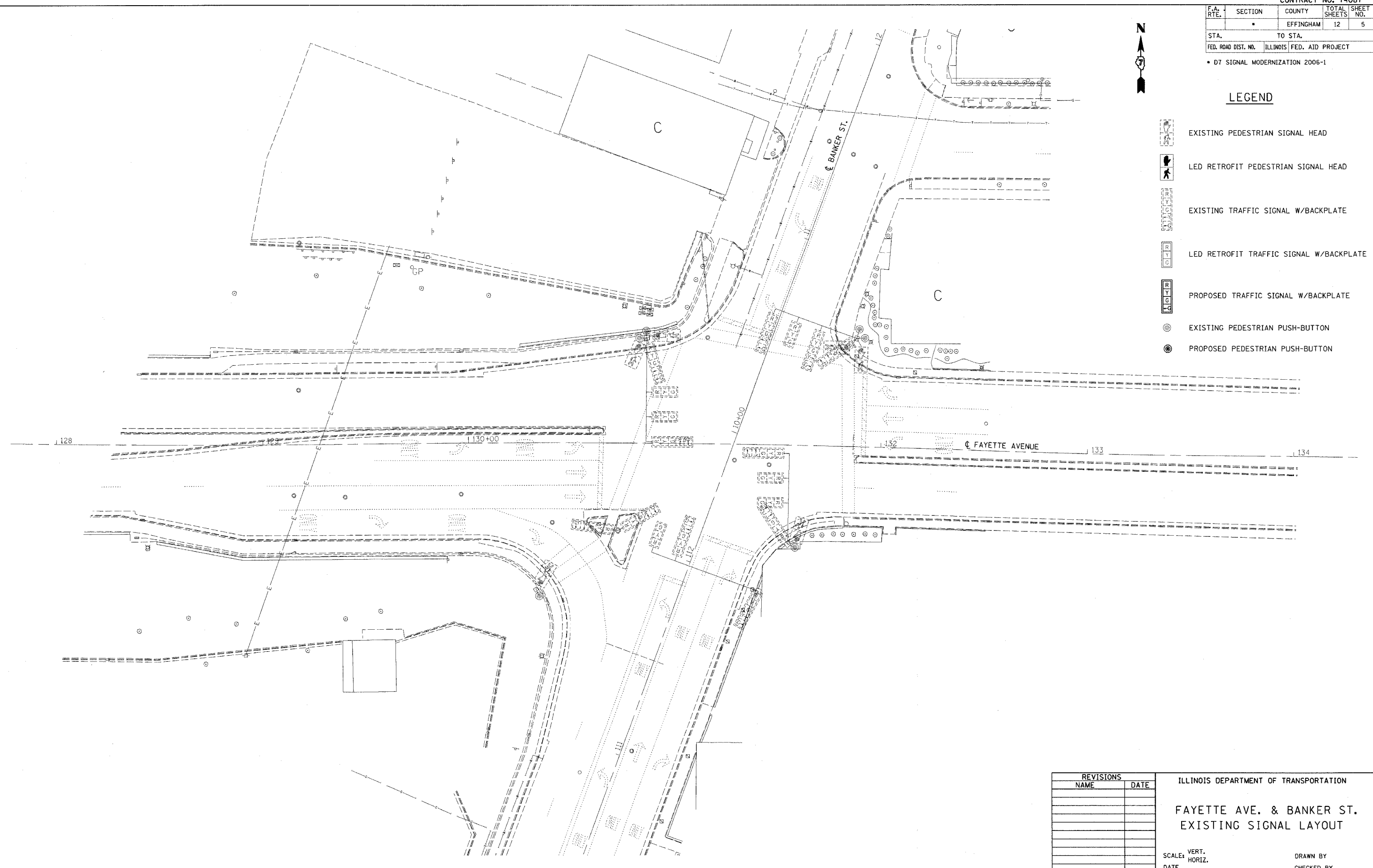
F.A. RTE.	SECTION	COUNTY	TOTAL SHEETS	SHEET NO.
		EFFINGHAM	12	5
STA.	TO STA.			
FED. ROAD DIST. NO.	ILLINOIS	FED. AID PROJECT		

• DT SIGNAL MODERNIZATION 2006-1



LEGEND

-  EXISTING PEDESTRIAN SIGNAL HEAD
-  LED RETROFIT PEDESTRIAN SIGNAL HEAD
-  EXISTING TRAFFIC SIGNAL W/BACKPLATE
-  LED RETROFIT TRAFFIC SIGNAL W/BACKPLATE
-  PROPOSED TRAFFIC SIGNAL W/BACKPLATE
-  EXISTING PEDESTRIAN PUSH-BUTTON
-  PROPOSED PEDESTRIAN PUSH-BUTTON



REVISIONS	
NAME	DATE

ILLINOIS DEPARTMENT OF TRANSPORTATION
FAYETTE AVE. & BANKER ST.
 EXISTING SIGNAL LAYOUT

SCALE: VERT. _____
 HORIZ. _____
 DATE _____ DRAWN BY _____
 CHECKED BY _____

PLOT DATE = 3/24/2006
 FILE NAME = #FILE#
 PLOT SCALE = #SCALE#
 USER NAME = #USER#



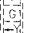




F.A. RTE.	SECTION	COUNTY	TOTAL SHEETS	SHEET NO.
		EFFINGHAM	12	6
STA. TO STA.		ILLINOIS FED. AID PROJECT		
FED. ROAD DIST. NO.		• 07 SIGNAL MODERNIZATION 2006-1		

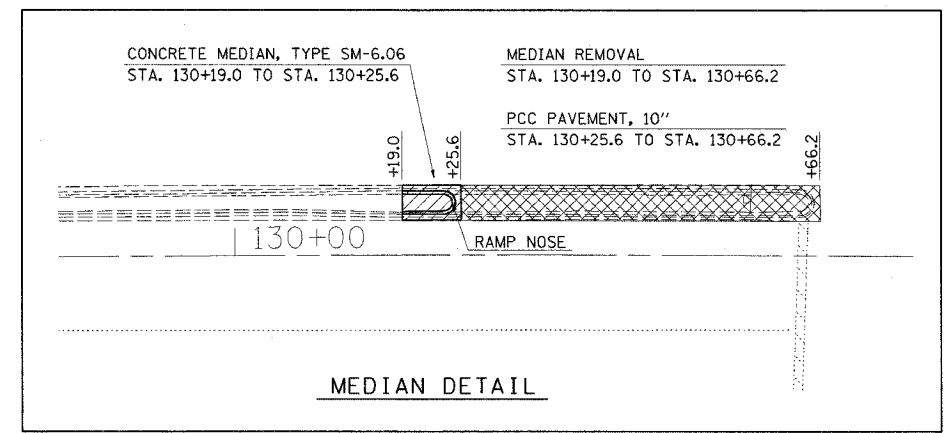
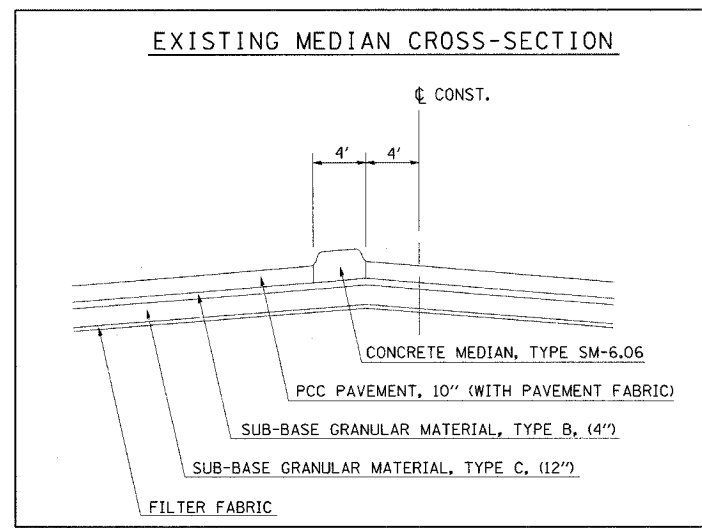
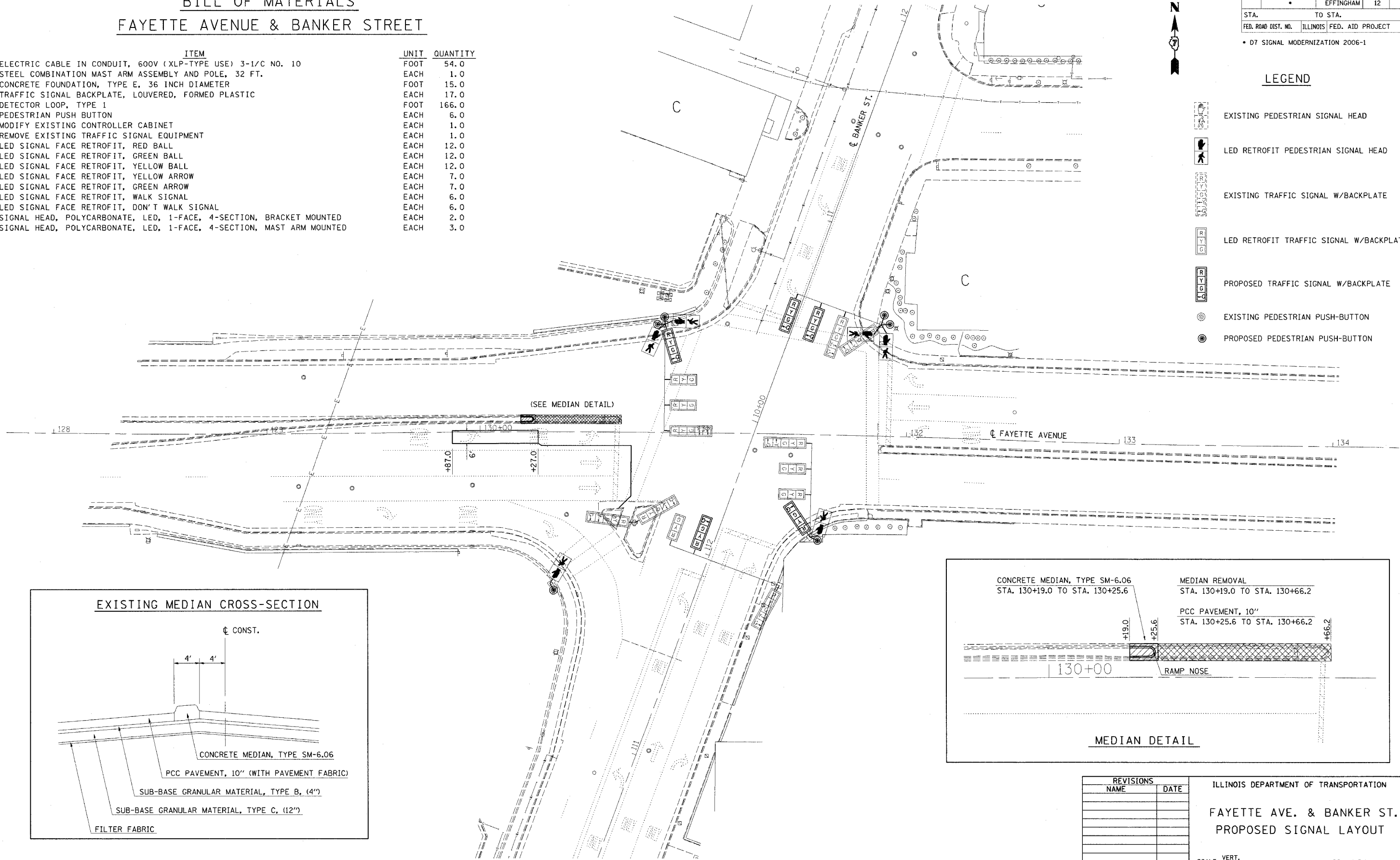
BILL OF MATERIALS

FAYETTE AVENUE & BANKER STREET

ITEM	UNIT	QUANTITY
ELECTRIC CABLE IN CONDUIT, 600V (XLP-TYPE USE) 3-1/C NO. 10	FOOT	54.0
STEEL COMBINATION MAST ARM ASSEMBLY AND POLE, 32 FT.	EACH	1.0
CONCRETE FOUNDATION, TYPE E, 36 INCH DIAMETER	FOOT	15.0
TRAFFIC SIGNAL BACKPLATE, LOUVERED, FORMED PLASTIC	EACH	17.0
DETECTOR LOOP, TYPE 1	FOOT	166.0
PEDESTRIAN PUSH BUTTON	EACH	6.0
MODIFY EXISTING CONTROLLER CABINET	EACH	1.0
REMOVE EXISTING TRAFFIC SIGNAL EQUIPMENT	EACH	1.0
LED SIGNAL FACE RETROFIT, RED BALL	EACH	12.0
LED SIGNAL FACE RETROFIT, GREEN BALL	EACH	12.0
LED SIGNAL FACE RETROFIT, YELLOW BALL	EACH	12.0
LED SIGNAL FACE RETROFIT, YELLOW ARROW	EACH	7.0
LED SIGNAL FACE RETROFIT, GREEN ARROW	EACH	7.0
LED SIGNAL FACE RETROFIT, WALK SIGNAL	EACH	6.0
LED SIGNAL FACE RETROFIT, DON'T WALK SIGNAL	EACH	6.0
SIGNAL HEAD, POLYCARBONATE, LED, 1-FACE, 4-SECTION, BRACKET MOUNTED	EACH	2.0
SIGNAL HEAD, POLYCARBONATE, LED, 1-FACE, 4-SECTION, MAST ARM MOUNTED	EACH	3.0

LEGEND

-  EXISTING PEDESTRIAN SIGNAL HEAD
-  LED RETROFIT PEDESTRIAN SIGNAL HEAD
-  EXISTING TRAFFIC SIGNAL W/BACKPLATE
-  LED RETROFIT TRAFFIC SIGNAL W/BACKPLATE
-  PROPOSED TRAFFIC SIGNAL W/BACKPLATE
-  EXISTING PEDESTRIAN PUSH-BUTTON
-  PROPOSED PEDESTRIAN PUSH-BUTTON



PLOT DATE = 3/24/2006
 FILE NAME = #FILE#
 PLOT SCALE = #SCALE#
 USER NAME = #USER#

REVISIONS	
NAME	DATE

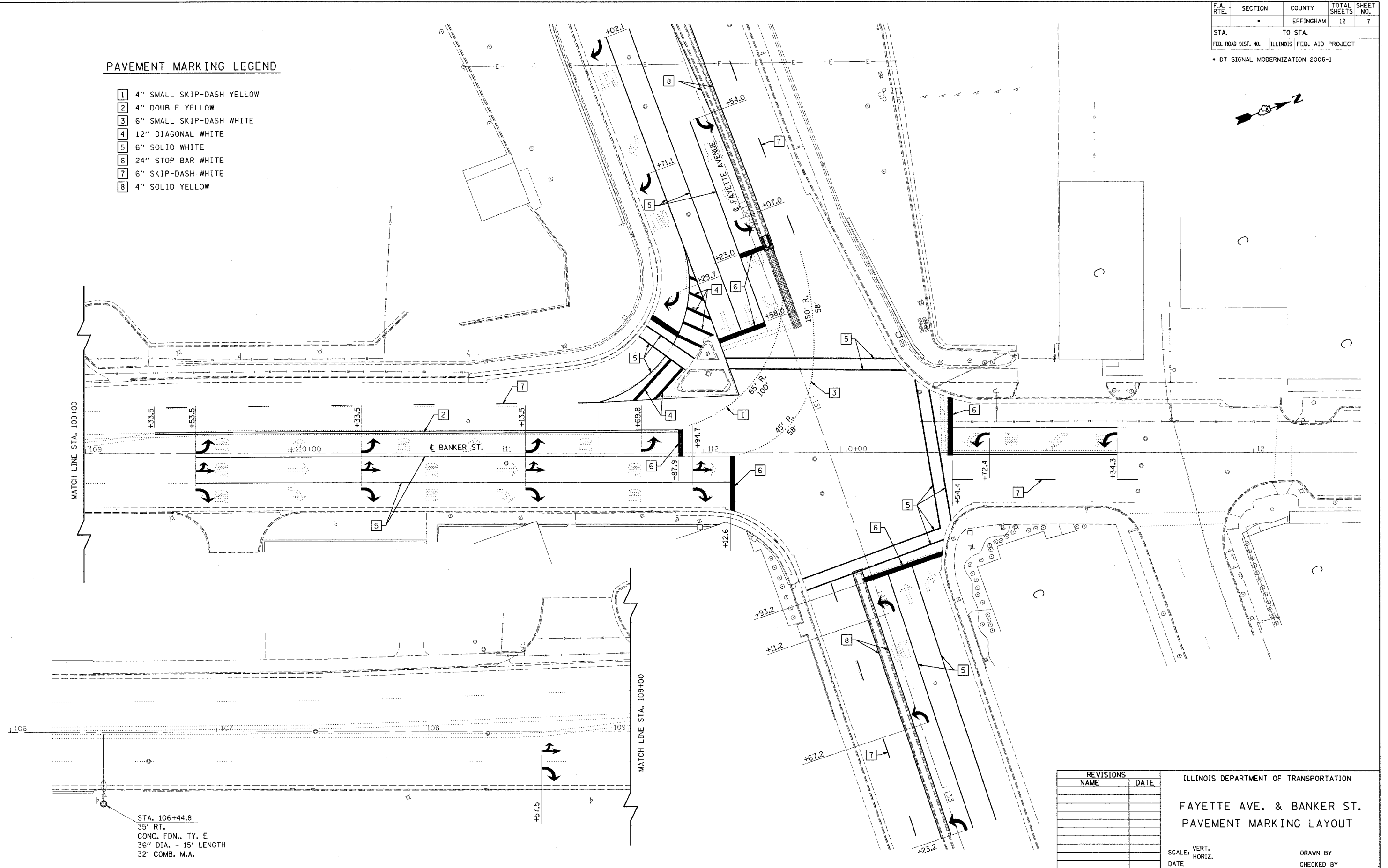
ILLINOIS DEPARTMENT OF TRANSPORTATION
FAYETTE AVE. & BANKER ST.
 PROPOSED SIGNAL LAYOUT
 SCALE: VERT. _____
 HORIZ. _____
 DATE _____
 DRAWN BY _____
 CHECKED BY _____

F.A. RTE.	SECTION	COUNTY	TOTAL SHEETS	SHEET NO.
		EFFINGHAM	12	7
STA.		TO STA.		
FED. ROAD DIST. NO.	ILLINOIS	FED. AID PROJECT		

• DT SIGNAL MODERNIZATION 2006-1

PAVEMENT MARKING LEGEND

- 1 4" SMALL SKIP-DASH YELLOW
- 2 4" DOUBLE YELLOW
- 3 6" SMALL SKIP-DASH WHITE
- 4 12" DIAGONAL WHITE
- 5 6" SOLID WHITE
- 6 24" STOP BAR WHITE
- 7 6" SKIP-DASH WHITE
- 8 4" SOLID YELLOW



PLOT DATE = 3/24/2006
 FILE NAME = WFLLE1
 USER NAME = dlsbrt

STA. 106+44.8
 35' RT.
 CONC. FDN., TY. E
 36" DIA. - 15' LENGTH
 32' COMB. M.A.

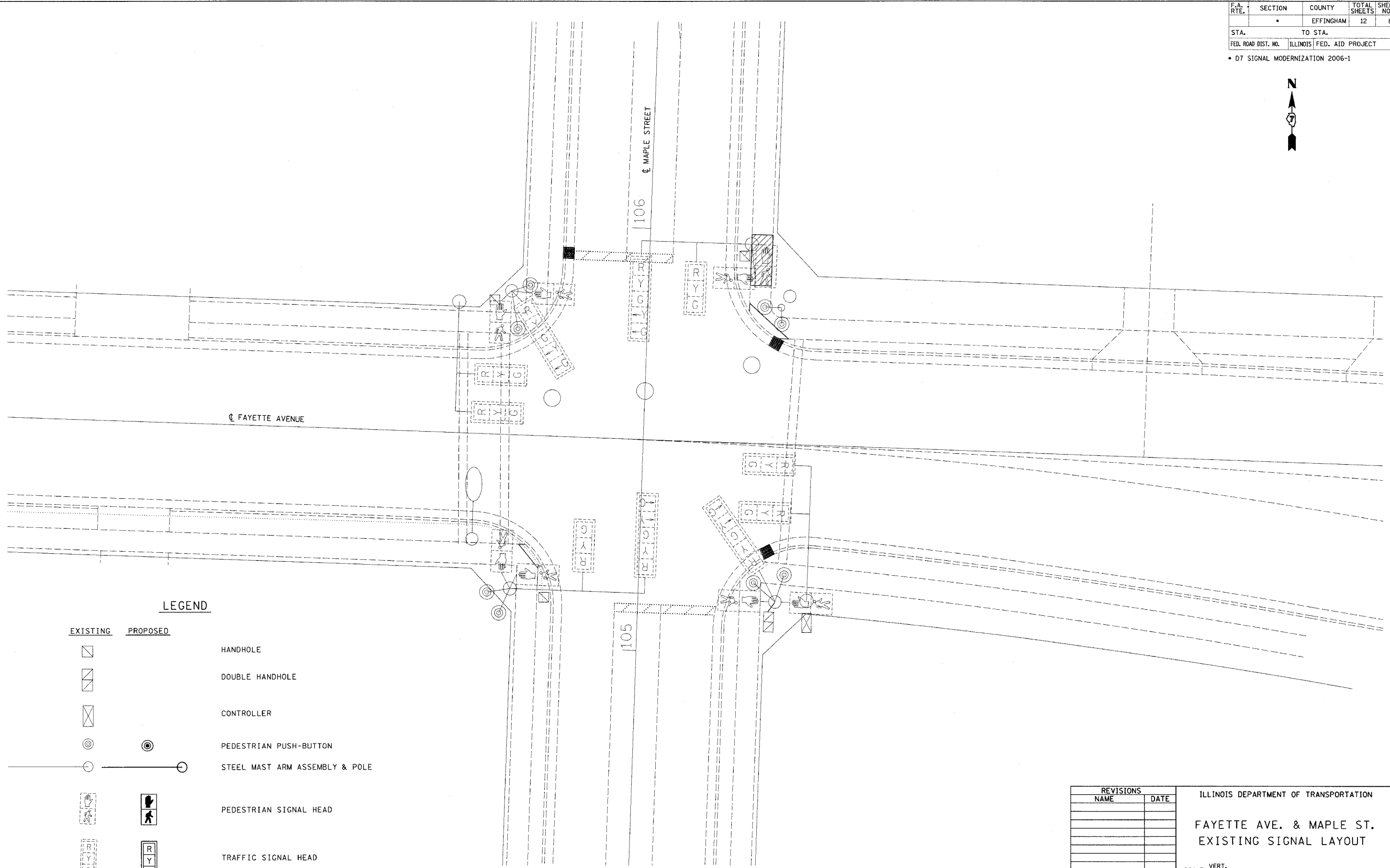
REVISIONS	
NAME	DATE

ILLINOIS DEPARTMENT OF TRANSPORTATION
FAYETTE AVE. & BANKER ST.
PAVEMENT MARKING LAYOUT

SCALE: VERT. _____
 HORIZ. _____
 DATE _____
 DRAWN BY _____
 CHECKED BY _____

F.A. RTE.	SECTION	COUNTY	TOTAL SHEETS	SHEET NO.
	*	EFFINGHAM	12	8
STA.		TO STA.		
FED. ROAD DIST. NO.	ILLINOIS	FED. AID PROJECT		

* D7 SIGNAL MODERNIZATION 2006-1



LEGEND

EXISTING PROPOSED



HANDHOLE



DOUBLE HANDHOLE



CONTROLLER



PEDESTRIAN PUSH-BUTTON



STEEL MAST ARM ASSEMBLY & POLE



PEDESTRIAN SIGNAL HEAD



TRAFFIC SIGNAL HEAD

PLOT DATE = 3/24/2006
 FILE NAME = 830104.dwg
 USER NAME = dstrout

REVISIONS	
NAME	DATE

ILLINOIS DEPARTMENT OF TRANSPORTATION
FAYETTE AVE. & MAPLE ST.
 EXISTING SIGNAL LAYOUT

SCALE: VERT. DRAWN BY
 HORIZ. CHECKED BY
 DATE

BILL OF MATERIALS FAYETTE AVENUE & MAPLE STREET

F.A. RTE.	SECTION	COUNTY	TOTAL SHEETS	SHEET NO.
		EFFINGHAM	12	9
STA.		TO STA.		
FED. ROAD DIST. NO.		ILLINOIS FED. AID PROJECT		

• 07 SIGNAL MODERNIZATION 2006-1



ITEM	UNIT	QUANTITY
PORTLAND CEMENT CONCRETE SIDEWALK, 4 INCH	SQ FT	60.0
CONDUIT IN TRENCH, 2" DIA., PVC	FOOT	25.0
TRENCH AND BACKFILL FOR ELECTRICAL WORK	FOOT	25.0
ELECTRIC CABLE IN CONDUIT, SIGNAL NO. 14, 5C	FOOT	318.0
ELECTRIC CABLE IN CONDUIT, SIGNAL NO. 14 7C	FOOT	317.0
TRAFFIC SIGNAL POST, ALUMINUM 12 FT.	EACH	1.0
TRAFFIC SIGNAL POST, ALUMINUM 18 FT.	EACH	2.0
STEEL MAST ARM ASSEMBLY & POLE, 26 FT.	EACH	1.0
CONCRETE FOUNDATION, TYPE A	FOOT	3.0
CONCRETE FOUNDATION, TYPE E, 30 INCH DIA.	FOOT	13.5
TRAFFIC SIGNAL BACKPLATE, LOUVERED, FORMED PLASTIC	EACH	14.0
PEDESTRIAN PUSH BUTTON	EACH	6.0
MODIFY EXISTING CONTROLLER	EACH	1.0
REMOVE ELECTRIC CABLE FROM CONDUIT	FOOT	437.0
REMOVE EXISTING TRAFFIC SIGNAL EQUIPMENT	EACH	1.0
SIGNAL HEAD, POLYCARBONATE, LED, 1-FACE, 3-SECTION, BRACKET MOUNTED	EACH	2.0
SIGNAL HEAD, POLYCARBONATE, LED, 1-FACE, 3-SECTION, MAST ARM MOUNTED	EACH	6.0
SIGNAL HEAD, POLYCARBONATE, LED, 1-FACE, 5-SECTION, MAST ARM MOUNTED	EACH	2.0
SIGNAL HEAD, POLYCARBONATE, LED, 2-FACE, 1-3 SECTION, 5-SECTION, BRACKET MOUNTED	EACH	2.0
PEDESTRIAN SIGNAL HEAD, POLYCARBONATE, LED, 2-FACE, BRACKET MOUNTED	EACH	4.0

RELOCATE EXISTING PEDESTRIAN PUSH-BUTTON

REPLACE EXIST. POST WITH 18' ALUMINUM TRAFFIC SIGNAL POST

STA. 106+07.1
22.4' RT.

12' - T
2" PVC

60 SQ. FT.
SIDEWALK REMOVAL
& REPLACEMENT

13' - T
2" PVC

STA. 105+85.1; 33.5' RT.
PROPOSED 12' ALUMINUM TSP

STA. 19+36 (FAYETTE AVE.) =
STA. 105+50 (MAPLE ST.)

REPLACE EXIST. POST WITH 18' ALUMINUM TRAFFIC SIGNAL POST

MOVE PROPOSED SIGNAL FROM EXISTING LOCATION

LEGEND

EXISTING	PROPOSED	
		HANDHOLE
		DOUBLE HANDHOLE
		CONTROLLER
		PEDESTRIAN PUSH-BUTTON
		STEEL MAST ARM ASSEMBLY & POLE
		PEDESTRIAN SIGNAL HEAD
		TRAFFIC SIGNAL HEAD

REVISIONS	
NAME	DATE

ILLINOIS DEPARTMENT OF TRANSPORTATION
FAYETTE AVE. & MAPLE ST.
PROPOSED SIGNAL LAYOUT

SCALE: VERT. _____
HORIZ. _____
DATE _____

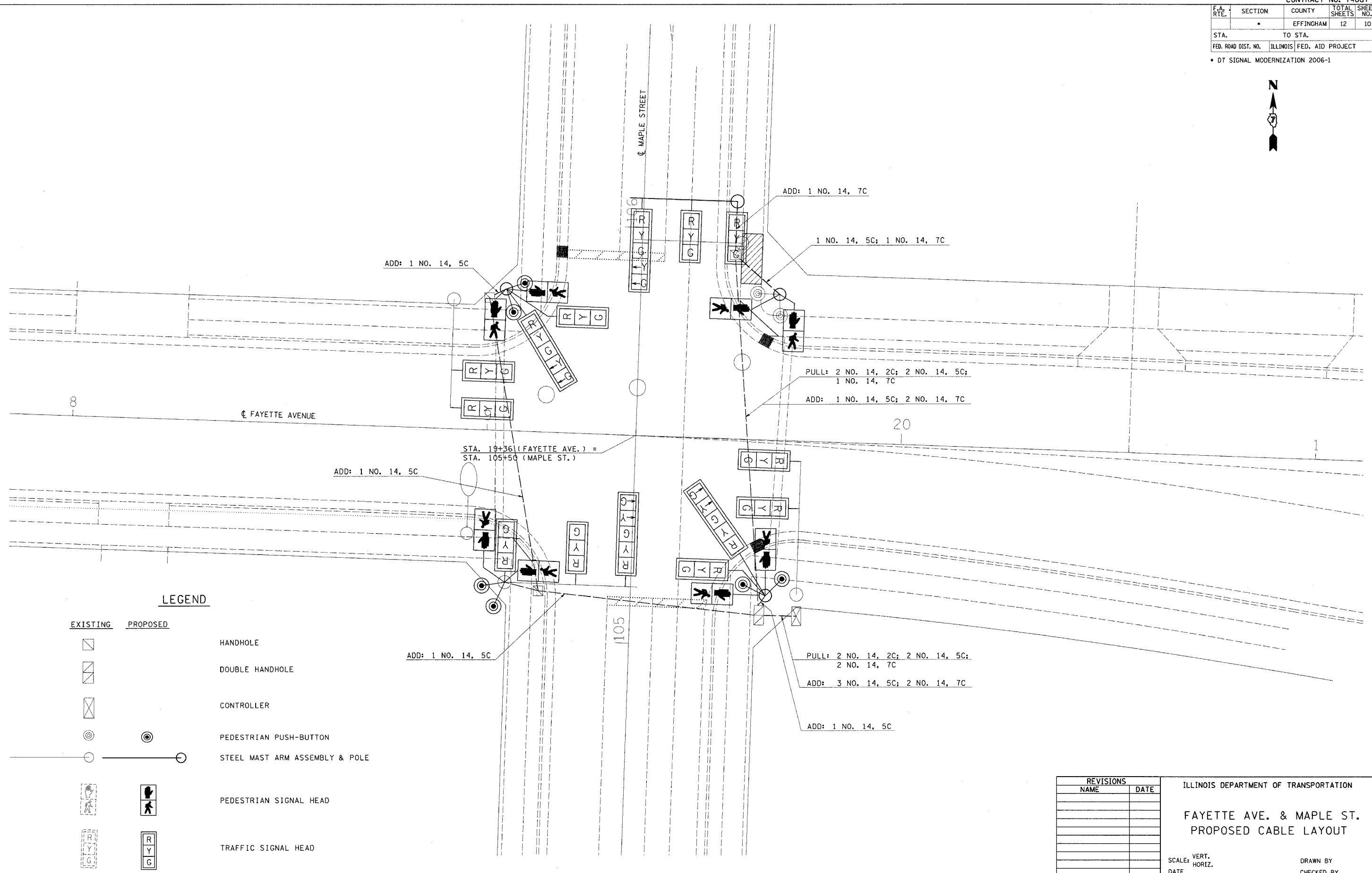
DRAWN BY _____
CHECKED BY _____

Plot Date = 2/24/2006
File Name = 071111
Plot Scale = 1"=50'
User Name = dastrot

Rev.

F.A. RTE.	SECTION	COUNTY	TOTAL SHEETS	SHEET NO.
		EFFINGHAM	12	10
STA.		TO STA.		
FED. ROAD DIST. NO.		ILLINOIS FED. AID PROJECT		

• 07 SIGNAL MODERNIZATION 2006-1



LEGEND

EXISTING	PROPOSED	
		HANDHOLE
		DOUBLE HANDHOLE
		CONTROLLER
		PEDESTRIAN PUSH-BUTTON
		STEEL MAST ARM ASSEMBLY & POLE
		PEDESTRIAN SIGNAL HEAD
		TRAFFIC SIGNAL HEAD

REVISIONS	
NAME	DATE

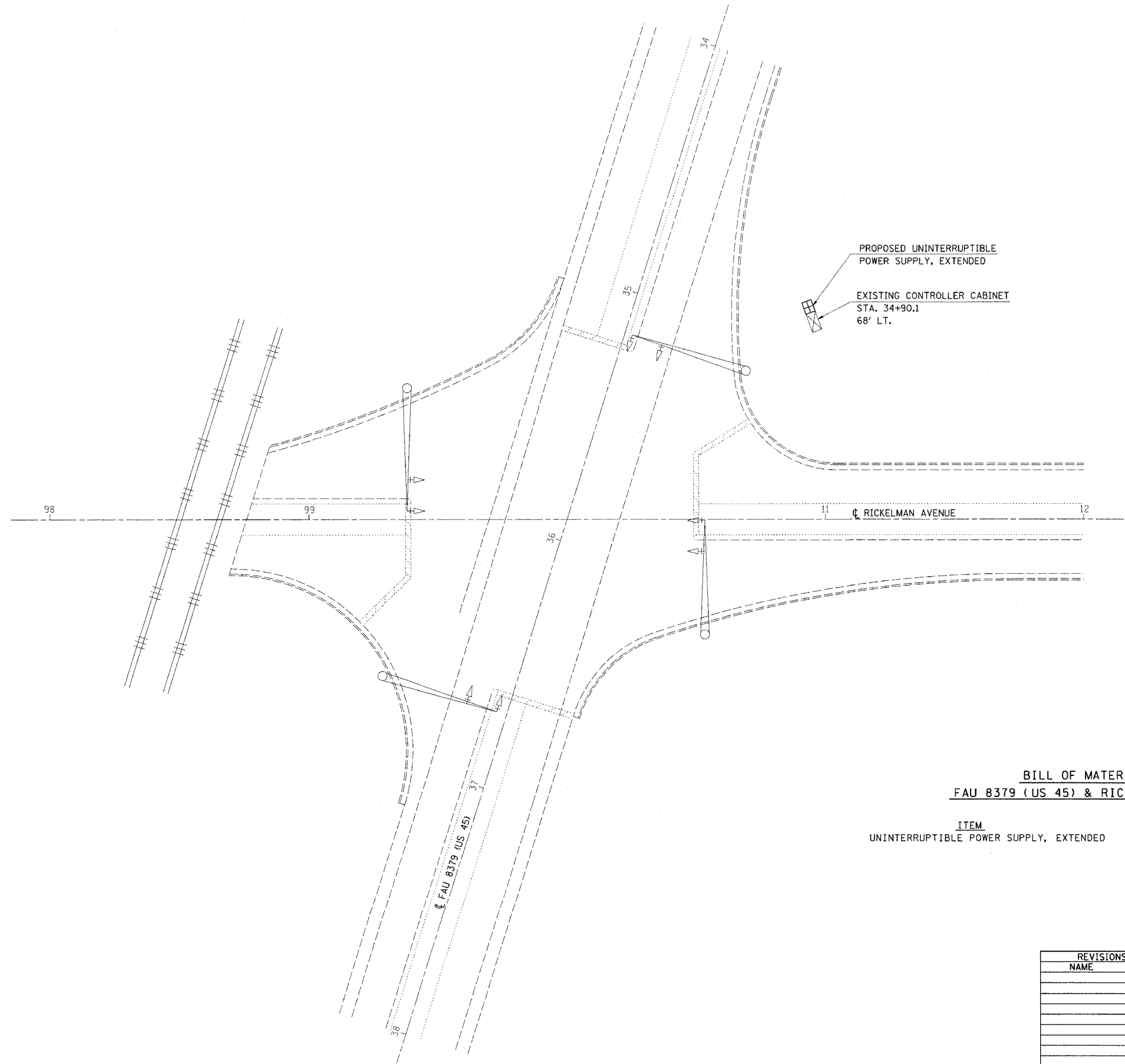
ILLINOIS DEPARTMENT OF TRANSPORTATION
FAYETTE AVE. & MAPLE ST.
 PROPOSED CABLE LAYOUT

SCALE: VERT. _____
 HORIZ. _____
 DATE _____ DRAWN BY _____
 CHECKED BY _____

PLOT DATE = 3/24/2006
 FILE NAME = #FILEL#
 PLOT SCALE = #SCALE#
 USER NAME = #USER#

F.A. RTE.	SECTION	COUNTY	TOTAL SHEETS	SHEET NO.
*		EFFINGHAM	12	11
STA.		TO STA.		
FED. ROAD DIST. NO.	ILLINOIS	FED. AID PROJECT		

* DT SIGNAL MODERNIZATION 2006-1



PROPOSED UNINTERRUPTIBLE
POWER SUPPLY, EXTENDED

EXISTING CONTROLLER CABINET
STA. 34+90.1
68' LT.

BILL OF MATERIALS
FAU 8379 (US 45) & RICKELMAN AVENUE

ITEM	UNIT	QUANTITY
UNINTERRUPTIBLE POWER SUPPLY, EXTENDED	EACH	1.0

REVISIONS	
NAME	DATE

ILLINOIS DEPARTMENT OF TRANSPORTATION

U. S. 45 & RICKLEMAN AVE.

SCALE: VERT. _____
HORIZ. _____

DATE _____

DRAWN BY _____
CHECKED BY _____

PLOT DATE = 3/24/2006
FILE NAME = #FILE#
PLOT SCALE = #SCALE#
USER NAME = #USER#

F.A. RTE.	SECTION	COUNTY	TOTAL SHEETS	SHEET NO.
	*	EFFINGHAM	12	12
STA.		TO STA.		
FED. ROAD DIST. NO.	ILLINOIS	FED. AID PROJECT		

* D7 SIGNAL MODERNIZATION 2006-1



Illinois Department of Transportation
Division of Highways
Ill. Dept. of Trans. D-7

SOIL BORING LOG

Page 1 of 1

Date 11/22/05

ROUTE FAP 95 DESCRIPTION TS Mast Arm Foundation LOGGED BY E. Sandschafer

SECTION D7 Signal Modernization LOCATION SE 14, SEC. 20, TWP. 8 N, RNG. 6 E, 3 PM

COUNTY Effingham DRILLING METHOD Hollow stem auger HAMMER TYPE Auto 140#

STRUCT. NO. NA

Station gINT 025-ts02

BORING NO. 1

Station *

Offset _____

Ground Surface Elev. ft 198.81 ft

	D	B	U	M		D	B	U	M	
	E	L	C	O		E	L	C	O	
	P	O	S	I		P	O	S	I	
	T	W	S	T		T	W	S	T	
	H	S	Qu	T		H	S	Qu	T	
Surface Water Elev.										
Stream Bed Elev.										
Groundwater Elev.:										
First Encounter										
Upon Completion										
After _____ Hrs.										
	(ft)	(#)	(tsf)	(%)		(ft)	(#)	(tsf)	(%)	
7 3/4" concrete pavement.										
Gray, LOAM.										
Very stiff to medium, damp, grayred, CLAY w/Silt.		3								
		4	1.7	22						
		7	B							
		3								
		5	0.8	23						
		5	B							
		1								
		3	0.7	21						
		4	B							
		2								
		2	0.5	23						
		3	B							
		7								
Hard, very moist, red, SANDY LOAM TILL.		22	4.9	9						
		49	PP							
		30								
		40	+4.5	6						
		45	PP							
Hard, very moist, gray, CLAY LOAM TILL, sample pokerchipped.										
Stiff, damp, gray, SANDY LOAM TILL.		49								
Extent of exploration.		503"	1.7	9						
		502"	S							

Benchmark: Top of NW bolt cover on existing mast arm foundation in NE corner at intersection of Maple Street and Fayette Avenue = assumed 200.00'

* Location of B1: 5.5' N and 9.0' W of existing center of mast arm foundation in NE corner, as above. Located in NB lane of Maple Street.

Latitude, Longitude, Mag Datum

The Unconfined Compressive Strength (UCS) Failure Mode is indicated by (B-Bulge, S-Shear, P-Penetrometer)
The SPT (N value) is the sum of the last two blow values in each sampling zone (AASHTO T206)

BBS, from 137 (Rev. 8-99)

REVISIONS		ILLINOIS DEPARTMENT OF TRANSPORTATION	
NAME	DATE	BORING LOG	
SCALE:	VERT. _____	DRAWN BY _____	
DATE	HORIZ. _____		

PLOT DATE = 3/24/2006
FILE NAME = #FILEL9
PLOT SCALE = #SCALE9
USER NAME = district