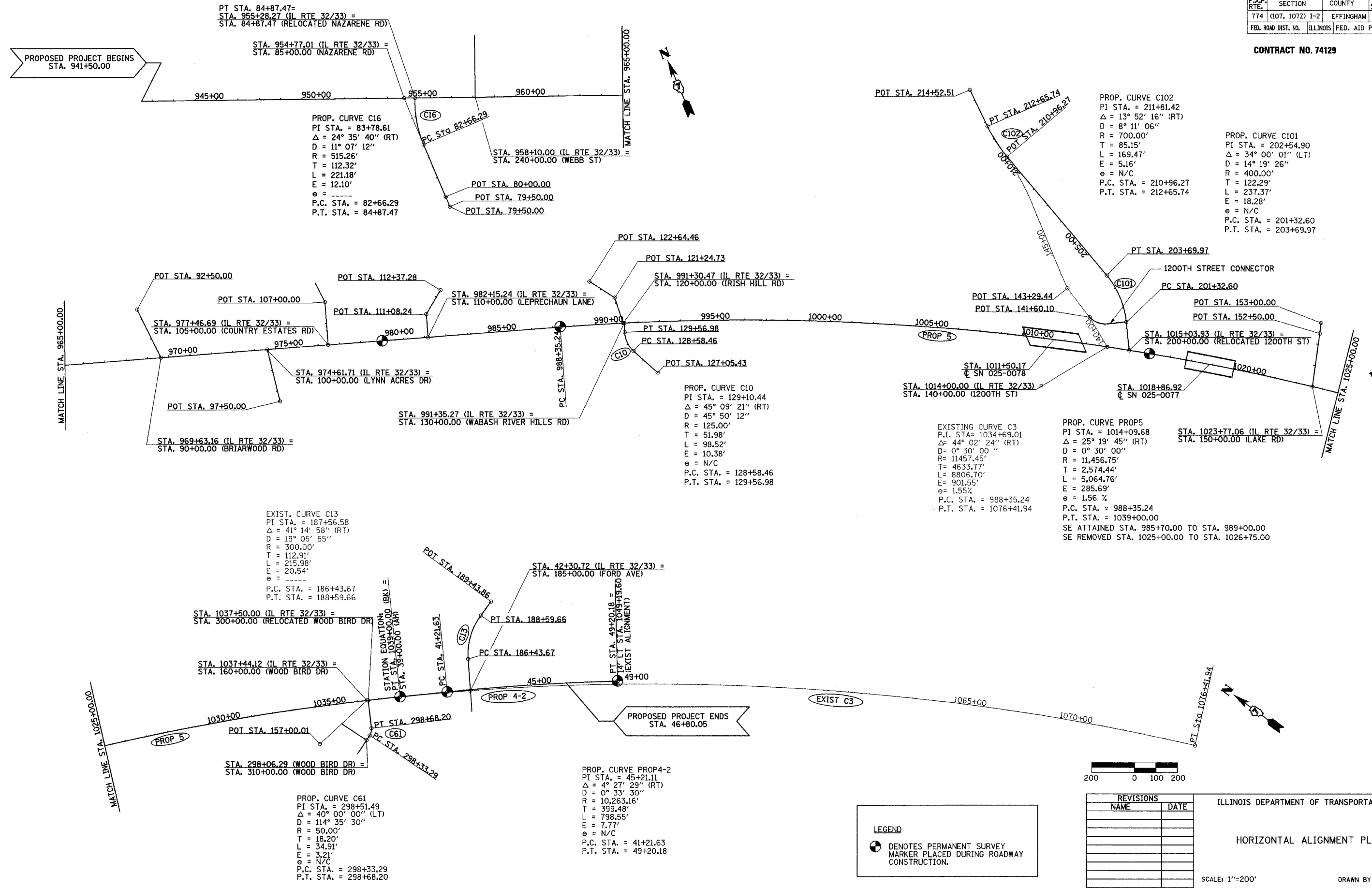


F.A.P. RTE.	SECTION	COUNTY	TOTAL SHEETS	SHEET NO.
774	(107, 107Z) I-2	EFFINGHAM	12	5
FED. ROAD DIST. NO.		ILLINOIS	FED. AID PROJECT	

CONTRACT NO. 74129



PT STA. 84+87.47 =  
 STA. 955+28.27 (IL RTE 32/33) =  
 STA. 84+87.47 (RELOCATED NAZARENE RD)

STA. 954+77.01 (IL RTE 32/33) =  
 STA. 85+00.00 (NAZARENE RD)

PROP. CURVE C16  
 PI STA. = 83+78.61  
 $\Delta = 24^\circ 35' 40''$  (RT)  
 D = 11° 07' 12"  
 R = 515.26'  
 T = 112.32'  
 L = 221.18'  
 E = 12.10'  
 $e =$  -----  
 P.C. STA. = 82+66.29  
 P.T. STA. = 84+87.47

STA. 958+10.00 (IL RTE 32/33) =  
 STA. 240+00.00 (WEBB ST)

POT STA. 80+00.00  
 POT STA. 79+50.00  
 POT STA. 79+50.00

PROP. CURVE C102  
 PI STA. = 211+81.42  
 $\Delta = 13^\circ 52' 16''$  (RT)  
 D = 8° 11' 06"  
 R = 700.00'  
 T = 85.15'  
 L = 169.47'  
 E = 5.16'  
 $e =$  N/C  
 P.C. STA. = 210+96.27  
 P.T. STA. = 212+65.74

PROP. CURVE C101  
 PI STA. = 202+54.90  
 $\Delta = 34^\circ 00' 01''$  (LT)  
 D = 14° 19' 26"  
 R = 400.00'  
 T = 122.29'  
 L = 237.37'  
 E = 18.28'  
 $e =$  N/C  
 P.C. STA. = 201+32.60  
 P.T. STA. = 203+69.97

PROP. CURVE C10  
 PI STA. = 129+10.44  
 $\Delta = 45^\circ 09' 21''$  (RT)  
 D = 45° 50' 12"  
 R = 125.00'  
 T = 51.98'  
 L = 98.52'  
 E = 10.38'  
 $e =$  N/C  
 P.C. STA. = 128+58.46  
 P.T. STA. = 129+56.98

EXISTING CURVE C3  
 P.I. STA. = 1034+69.01  
 $\Delta = 44^\circ 02' 24''$  (RT)  
 D = 0° 30' 00"  
 R = 11457.45'  
 T = 4633.77'  
 L = 8806.70'  
 E = 901.55'  
 $e = 1.55\%$   
 P.C. STA. = 988+35.24  
 P.T. STA. = 1076+41.94

PROP. CURVE PROP5  
 PI STA. = 1014+09.68  
 $\Delta = 25^\circ 19' 45''$  (RT)  
 D = 0° 30' 00"  
 R = 11,456.75'  
 T = 2,574.44'  
 L = 5,064.76'  
 E = 285.69'  
 $e = 1.56\%$   
 P.C. STA. = 988+35.24  
 P.T. STA. = 1039+00.00

STA. 1023+77.06 (IL RTE 32/33) =  
 STA. 150+00.00 (LAKE RD)

EXIST. CURVE C13  
 PI STA. = 187+56.58  
 $\Delta = 41^\circ 14' 58''$  (RT)  
 D = 19° 05' 55"  
 R = 300.00'  
 T = 112.91'  
 L = 215.98'  
 E = 20.54'  
 $e =$  -----  
 P.C. STA. = 186+43.67  
 P.T. STA. = 188+59.66

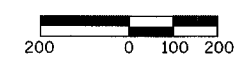
STA. 1037+50.00 (IL RTE 32/33) =  
 STA. 300+00.00 (RELOCATED WOOD BIRD DR)

STA. 1037+44.12 (IL RTE 32/33) =  
 STA. 160+00.00 (WOOD BIRD DR)

STA. 298+06.29 (WOOD BIRD DR) =  
 STA. 310+00.00 (WOOD BIRD DR)

PROP. CURVE C61  
 PI STA. = 298+51.49  
 $\Delta = 40^\circ 00' 00''$  (LT)  
 D = 114° 35' 30"  
 R = 50.00'  
 T = 18.20'  
 L = 34.91'  
 E = 3.21'  
 $e =$  N/C  
 P.C. STA. = 298+33.29  
 P.T. STA. = 298+68.20

PROP. CURVE PROP4-2  
 PI STA. = 45+21.11  
 $\Delta = 4^\circ 27' 29''$  (RT)  
 D = 0° 33' 30"  
 R = 10,263.16'  
 T = 399.48'  
 L = 798.55'  
 E = 7.77'  
 $e =$  N/C  
 P.C. STA. = 41+21.63  
 P.T. STA. = 49+20.18



**LEGEND**  
 DENOTES PERMANENT SURVEY MARKER PLACED DURING ROADWAY CONSTRUCTION.

REVISIONS	
NAME	DATE

ILLINOIS DEPARTMENT OF TRANSPORTATION  
 HORIZONTAL ALIGNMENT PLAN  
 SCALE: 1"=200'  
 DATE 4/22/02  
 DRAWN BY MLO  
 CHECKED BY BKB