

F.A.P. RTE.	SECTION	COUNTY	TOTAL SHEETS	SHEET NO.
774	107 WRS-2, L	EFFINGHAM	127	1
FED. ROAD DIST. NO.		ILLINOIS	FED. AID PROJECT	

CONTRACT NO. 74130

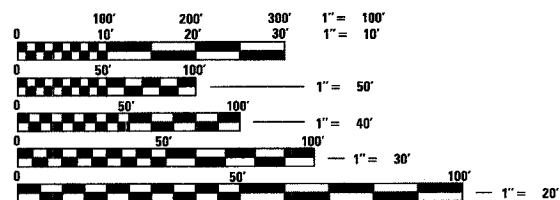
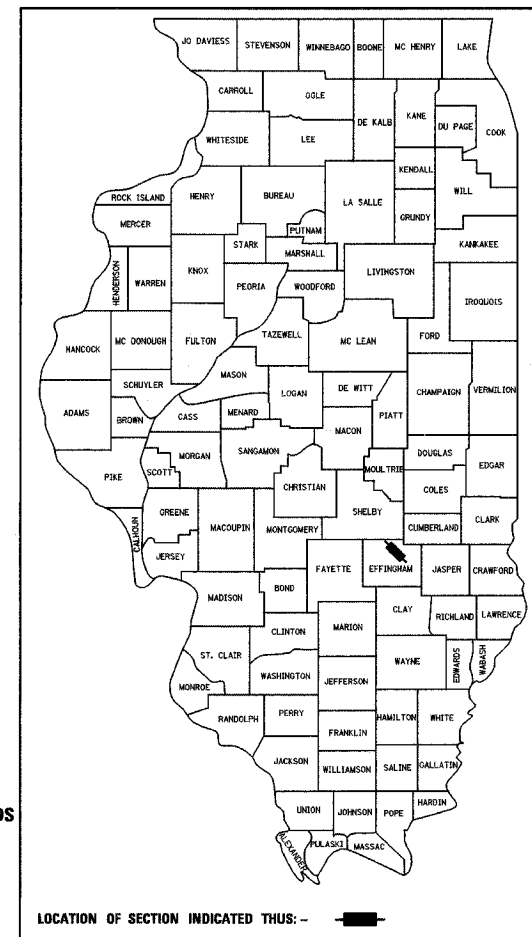
D-97-004-06

STATE OF ILLINOIS
DEPARTMENT OF TRANSPORTATION
DIVISION OF HIGHWAYS

PLANS FOR PROPOSED FEDERAL HIGHWAY PROJECT

FOR INDEX OF SHEETS, SEE SHEET NO. 2
FOR SUMMARY OF QUANTITIES, SEE SHEET NO'S 4-5

F.A.P. ROUTE 774 (ILLINOIS ROUTE 32/33)
SECTION 107 WRS-2, L
PROJECT: F-0774-(026)
EFFINGHAM COUNTY
C-97-006-06



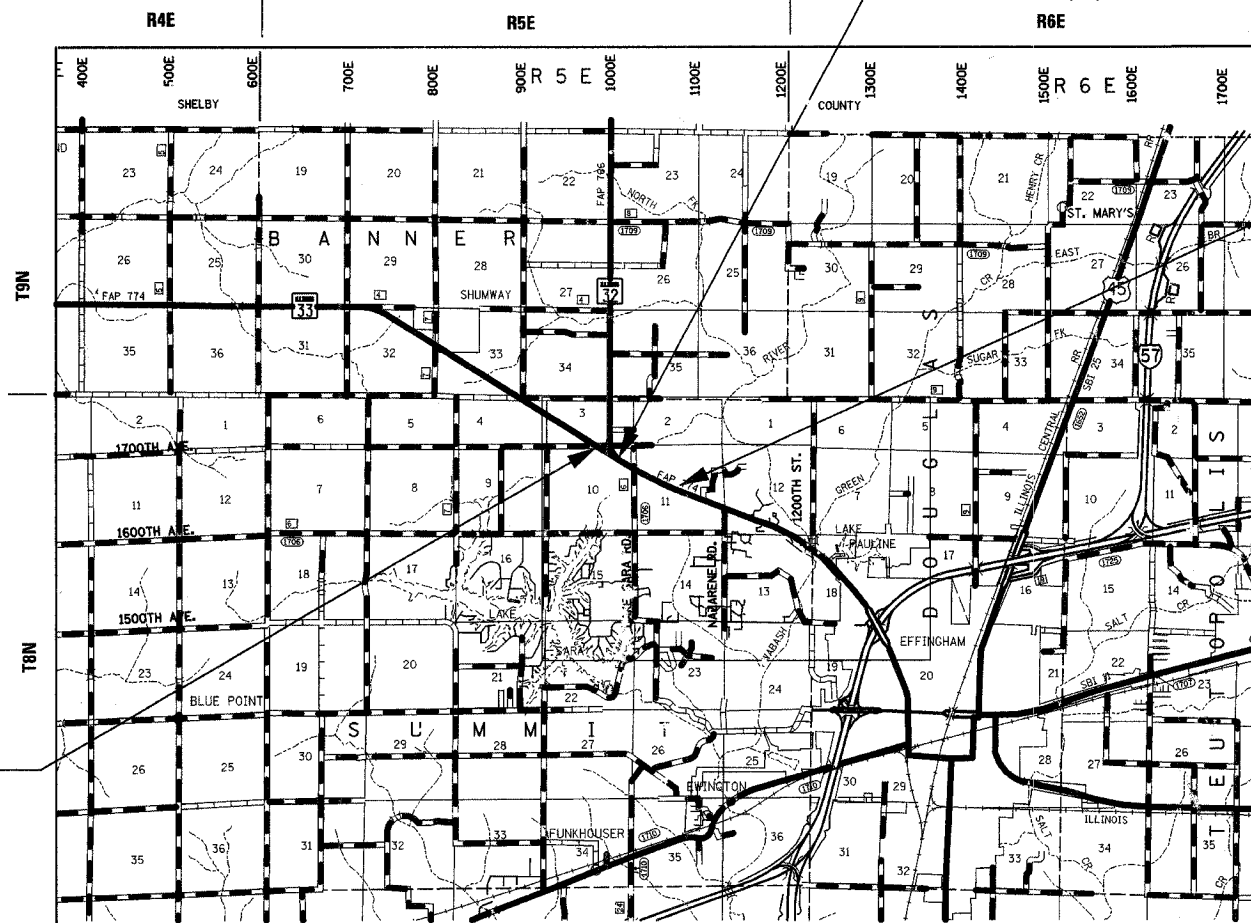
FULL SIZE PLANS HAVE BEEN PREPARED USING STANDARD ENGINEERING SCALES, REDUCED SIZED PLANS WILL NOT CONFORM TO STANDARD SCALES, IN MAKING MEASUREMENTS ON REDUCED PLANS, THE ABOVE SCALES MAY BE USED.

FOR UNDERGROUND UTILITY LOCATIONS CALL J.U.L.I.E. TOLL FREE 1-800-892-0123 SUMMIT TOWNSHIP

PROPOSED IMPROVEMENT BEGINS STA. 541+93.85

STATION EQUATION
STA. 559+19.18 (BK) =
STA. 884+96.78 (AH)

PROPOSED IMPROVEMENT ENDS STA. 942+50.00



PROJECT ENGINEER: BILL STANLEY
SQUAD LEADER:
TELEPHONE: 217-342-8320

DESIGN DESIGNATION: 1803 (24) ARTERIAL 3.87 (FD 20)
ADT = 13300 (2001)

CONTRACT NO. 74130
SUMMIT TOWNSHIP

LOCATION MAP

GROSS AND NET LENGTH OF PROJECT = 7479 FT. = 1.42 MILES



Sheila Kilminger
SHEILA J. KILMINGER, P.E.
DATE: 3-8-2006
EXPIRES: 11/30/2007

STATE OF ILLINOIS
DEPARTMENT OF TRANSPORTATION
DIVISION OF HIGHWAYS

SUBMITTED 3-31 2006
Christina M. Reed
DEPUTY DIRECTOR OF HIGHWAYS, REGION ENGINEER

20

ENGINEER OF PROJECT DEVELOPMENT AND IMPLEMENTATION
May 12, 2006
Mike Hine
ENGINEER OF DESIGN AND ENVIRONMENT

May 12, 2006
Milton R. Sues, P.E.
DIRECTOR, DIVISION OF HIGHWAYS

FHWA _____ 20 _____
DIVISION ADMINISTRATOR

PRINTED BY AUTHORITY
OF THE STATE OF ILLINOIS