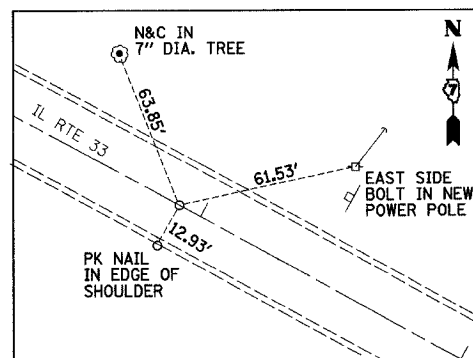
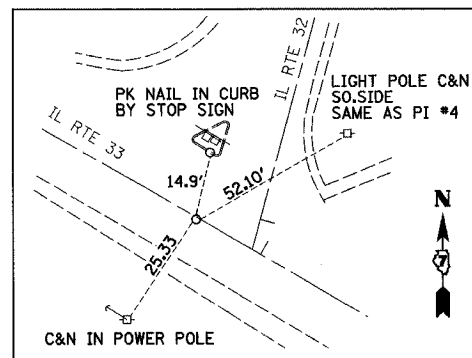


F.A.P. RTE.	SECTION	COUNTY	TOTAL SHEETS	SHEET NO.
774	107 WRS-2, L	EFFINGHAM	127	18
FED. ROAD DIST. NO.		ILLINOIS	FED. AID PROJECT	

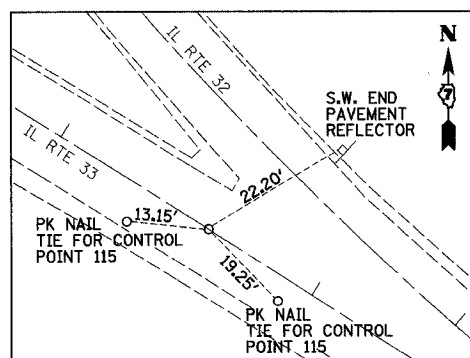
CONTRACT NO. 74130



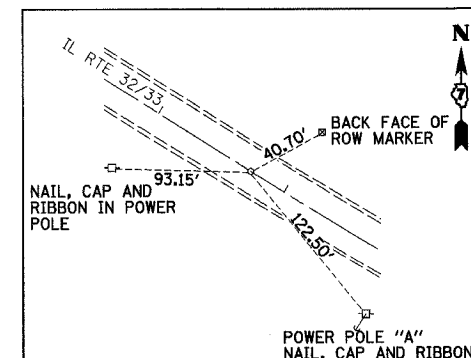
PC OF PROP. C-1 STA. 546+91.90 (MAG NAIL)



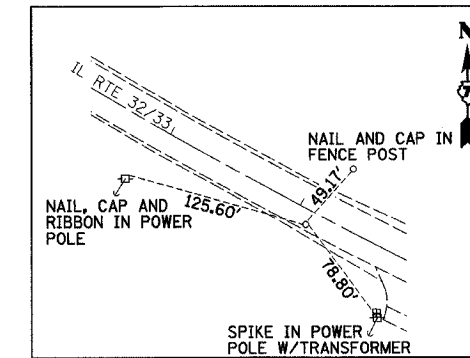
PI OF PROP. C-1 STA. 551+75.52 (MAG NAIL)



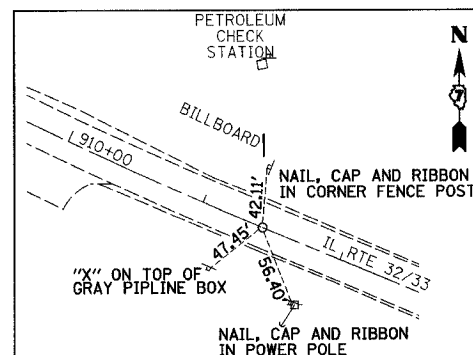
PT OF PROP. C-1 STA. 556+58.77 (MAG NAIL)



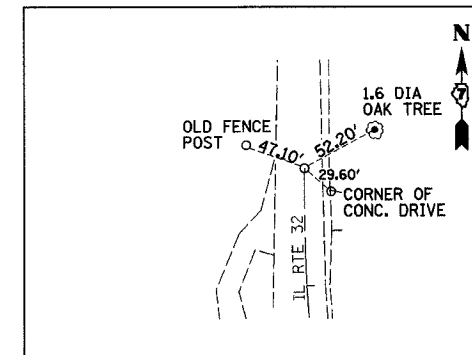
PC OF PROP. C-2 STA. 906+73.50 (MAG NAIL)



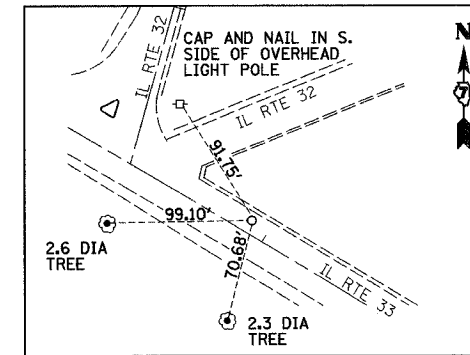
PI OF PROP. C-2 STA. 909+09.01 (MAG NAIL)



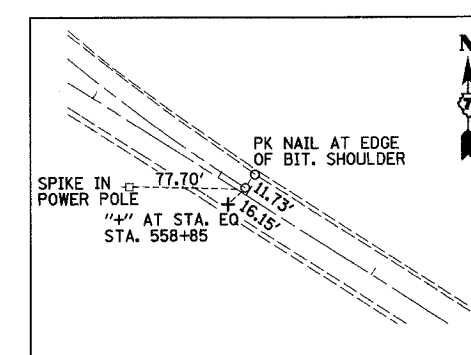
PT OF PROP. C-2 STA. 911+43.50 (MAG NAIL)



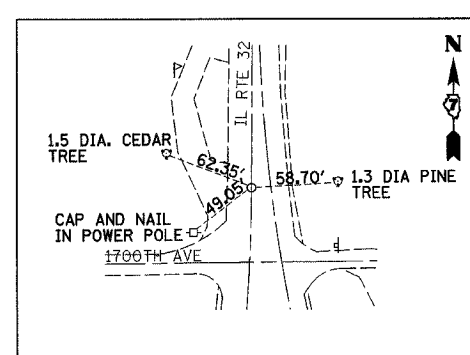
PC OF EXIST. C-4 STA. 872+20.78 (MAG NAIL)



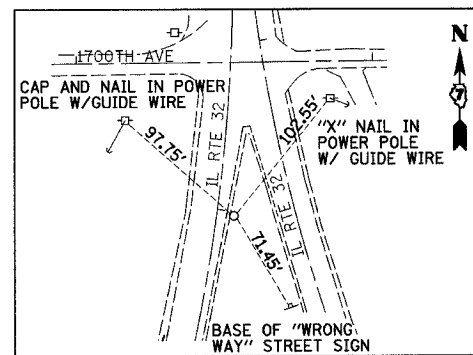
PI OF EXIST. C-4 STA. 878+53.19 (MAG NAIL)



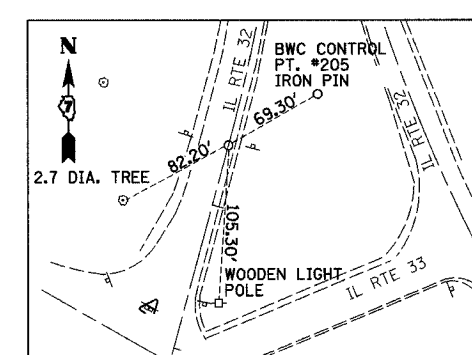
PT OF EXIST. C-4 STA. 883+73.55 (MAG NAIL)



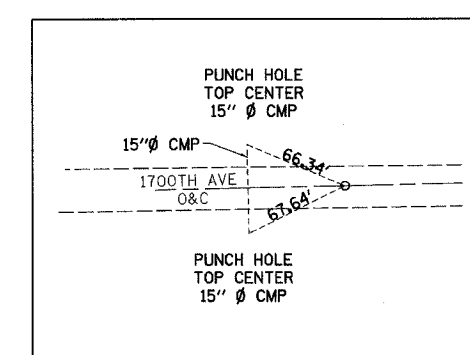
PC OF EXIST. C-5 STA. 51+49.94 (MAG NAIL)



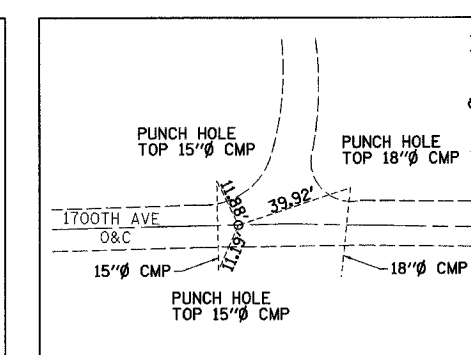
PI OF EXIST. C-5 STA. 53+04.92



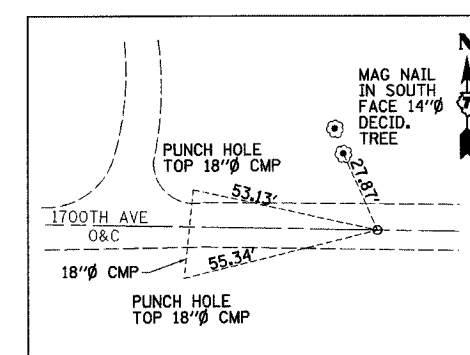
PT OF EXIST. C-5 STA. 54+58.16 (MAG NAIL)



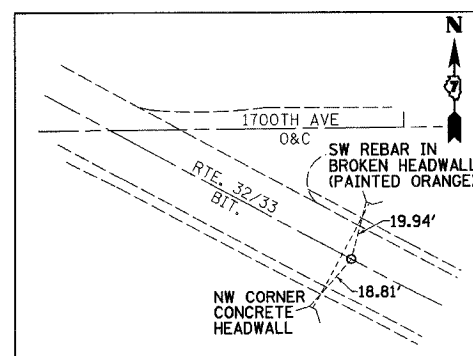
P.O.T. (SOUTH) (RELOCATED 1700TH AVENUE) STA. 217+00.00 (MAG NAIL & FLAGGING)



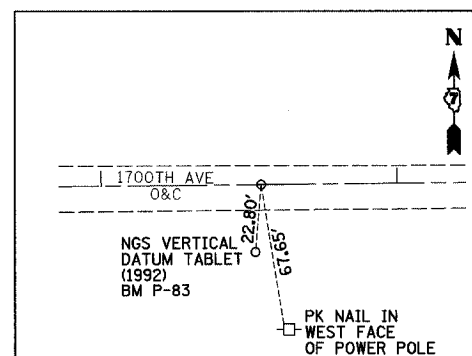
PC PROP. CURVE C71 (RELOCATED 1700TH AVENUE) STA. 217+99.31 (MAG NAIL & FLAGGING)



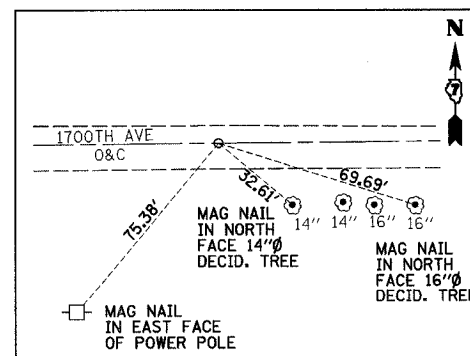
PI PROP. CURVE C71 (RELOCATED 1700TH AVENUE) STA. 218+88.66 (MAG NAIL & FLAGGING)



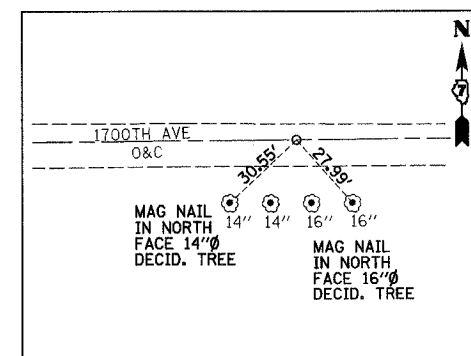
PRC PROP. CURVE C72 & PROP. CURVE C75
RELLOCATED 1700TH AVENUE STA. 223+07.85 =
ROUTE 32/33 STA. 544+65.39 (MAG NAIL & FLAGGING)



PI PROP. CURVE C75 (RELOCATED 1700TH AVENUE) STA. 223+92.58 (MAG NAIL & FLAGGING)



PT PROP. CURVE C75 (RELOCATED 1700TH AVENUE) STA. 224+73.01 (MAG NAIL & FLAGGING)



P.O.T. (NORTH) (RELOCATED 1700TH AVENUE) STA. 225+23.01 BK = STA. 224+88.76 AH (MAG NAIL & FLAGGING)

- BM #4
39' RT, STA. 914+26, ELEV. 611.19
RR SPIKE IN POWER POLE
- BM #P-83
55' LT, STA. 545+22, ELEV. 611.78
PERMANENT SURVEY MARKER
- BM #50
37' RT, STA. 558+53, ELEV. 615.45
RR SPIKE IN POWER POLE
- BM #51
98' RT, STA. 896+20, ELEV. 604.03
CHISELED "C" AT CORNER OF CONCRETE
PARKING LOT NEAR AMOCO GAS STATION SIGN
- BM #52
39' RT, STA. 924+19, ELEV. 611.84
RR SPIKE IN POWER POLE
- BM #5
38' RT, STA. 933+96, ELEV. 610.82
RR SPIKE IN POWER POLE
- BM #53
25' RT, STA. 940+57, ELEV. 608.01
CHISELED "C" SOUTHEAST CORNER
CONCRETE HEADWALL

REVISIONS	
NAME	DATE

ILLINOIS DEPARTMENT OF TRANSPORTATION

CONTROL TIES AND BENCHMARKS

DATE 5/2/02

DRAWN BY NJV
CHECKED BY TLS