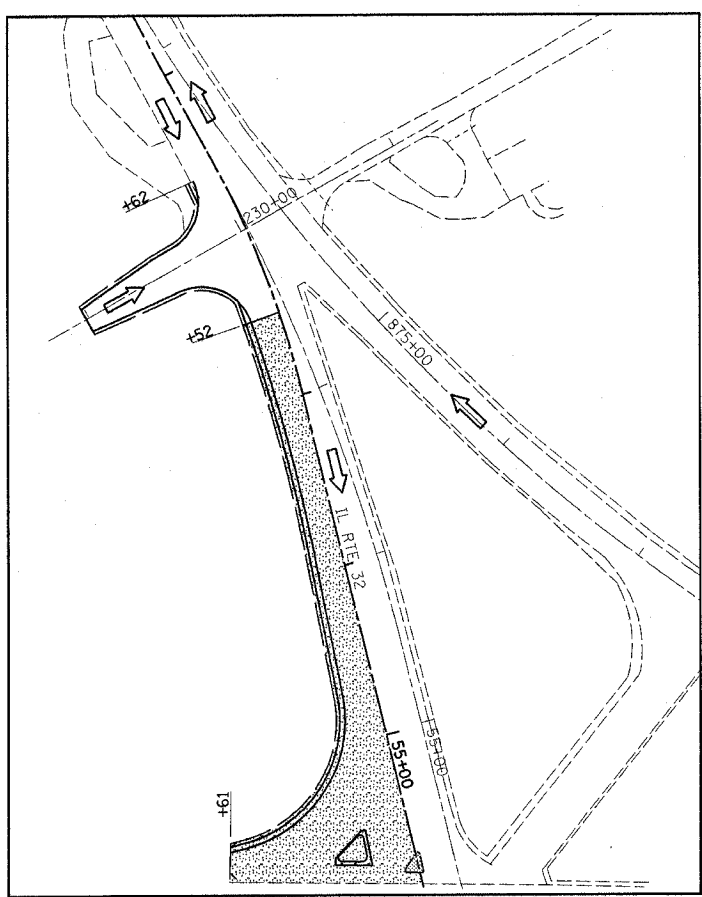
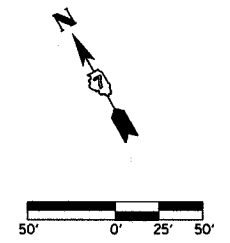
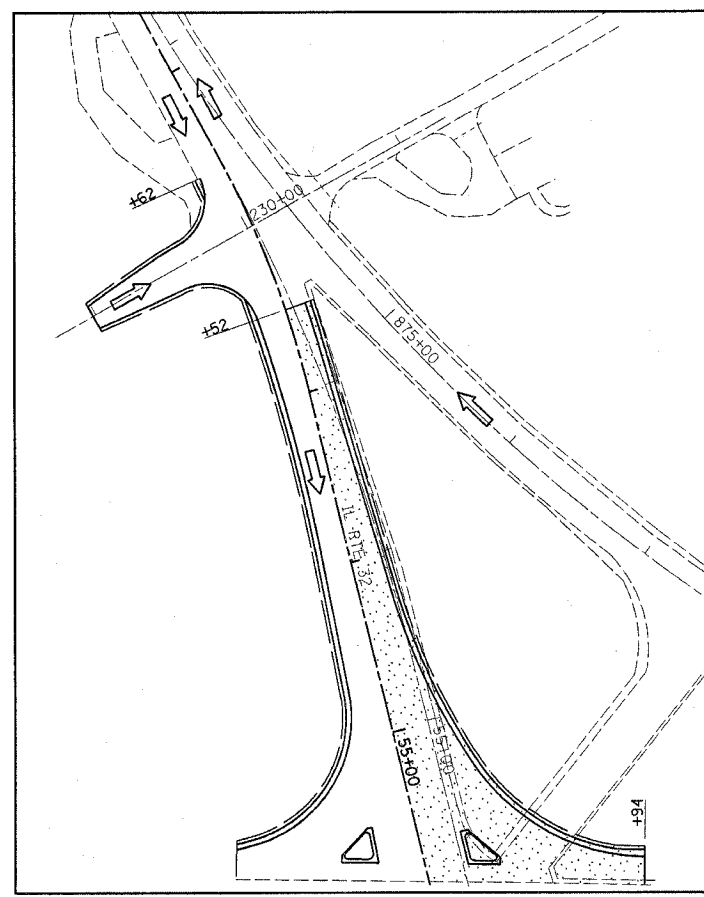


F.A.P. RTE.	SECTION	COUNTY	TOTAL SHEETS	SHEET NO.
774	107WRS-2, L	EFFINGHAM	127	20
FED. ROAD DIST. NO.	ILLINOIS	FED. AID PROJECT		

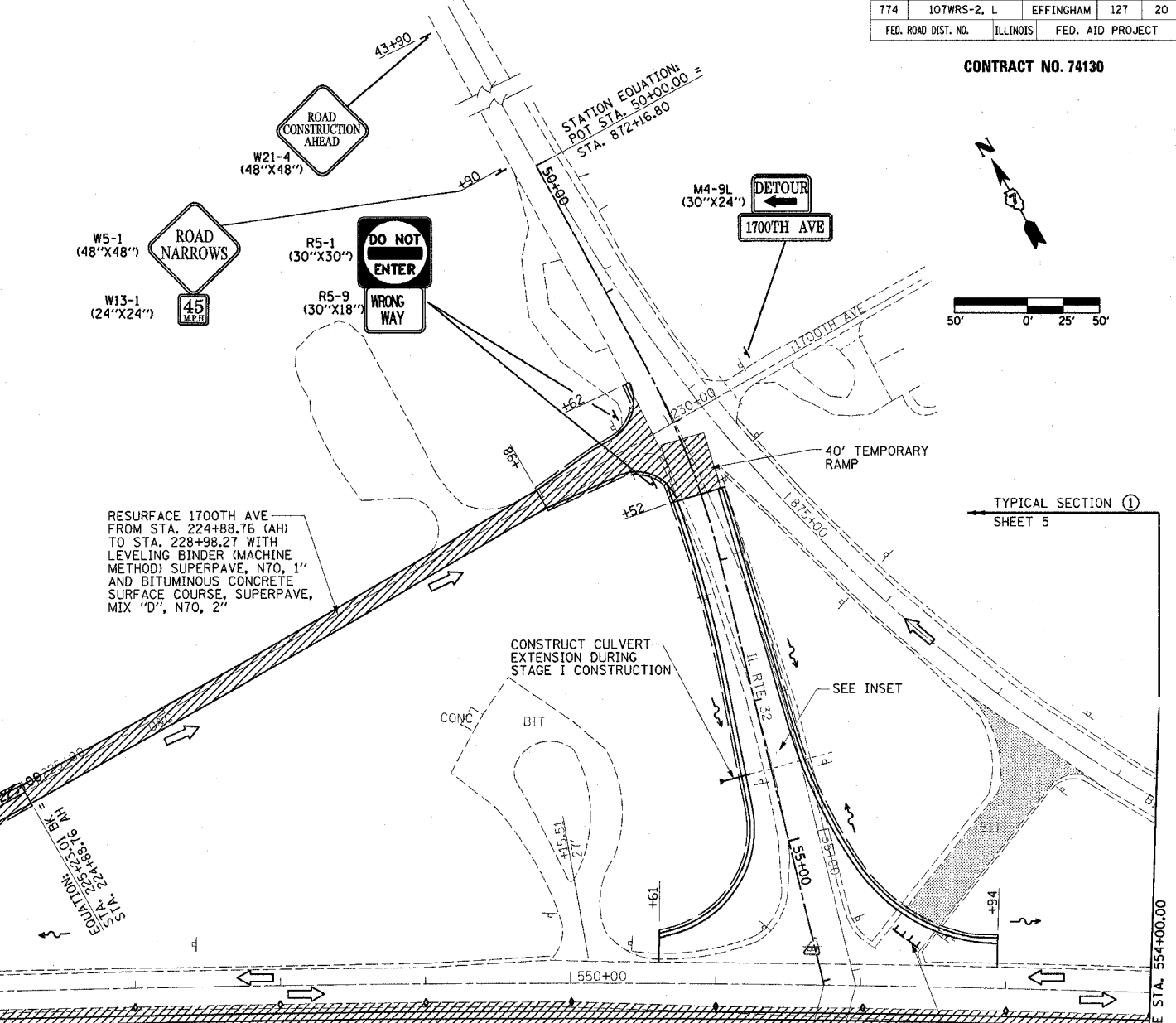
CONTRACT NO. 74130



STAGE 1A



STAGE 1B



TYPICAL SECTION ①
SHEET 5

JACK NEW ACROSS ROAD CULVERT IN PLACE DURING STAGE I CONSTRUCTION

STA. 544+65.39 (IL RTE 33) = STA. 223+07.85 (RELOCATED 1700TH AVE)

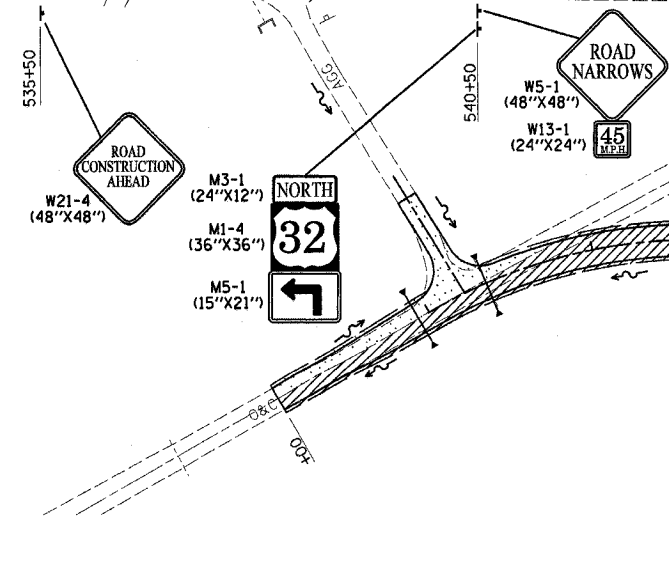
STA. 543+73.14 (IL RTE 33) = STA. 222+00.92 (1700TH AVE)

PROPOSED PROJECT BEGINS STA. 541+93.85

RESURFACE 1700TH AVE FROM STA. 224+88.76 (AH) TO STA. 228+98.27 WITH LEVELING BINDER (MACHINE METHOD) SUPERPAVE, N70, 1" AND BITUMINOUS CONCRETE SURFACE COURSE, SUPERPAVE, MIX "D", N70, 2"

CONSTRUCT CULVERT-EXTENSION DURING STAGE I CONSTRUCTION

TYPICAL SECTION ①
SHEET 5



NOTES:

- PRE-STAGE I: PRIOR TO MAINLINE WIDENING OPERATIONS, MILL AND PLACE LEVELING BINDER PER THE TYPICALS FROM STA. 541+93.85 TO STA. 942+50.00.
- MAINTAIN 2 LANE 2 WAY TRAFFIC ON IL ROUTE 32/33 THROUGHOUT DURATION OF STAGE I CONSTRUCTION.
- FOR PROPOSED TRAFFIC CONTROL TYPICAL SECTIONS, SEE SHEET 5 OF 15.
- ALL TRAFFIC CONTROL ITEMS FOR STAGE I TO BE INCLUDED IN THE COST OF "TRAFFIC CONTROL AND PROTECTION (SPECIAL), LOCATION 1", EXCEPT THE FOLLOWING WILL BE PAID FOR SEPARATELY:
 - ALL TEMPORARY PAVEMENT MARKINGS
 - TEMPORARY RAMPS
- UTILIZE STAGE CONSTRUCTION TO MAINTAIN ACCESS TO ALL PRIVATE AND COMMERCIAL ENTRANCES AND PUBLIC ACCESS ROADWAYS DURING STAGE I CONSTRUCTION.

TEMPORARY RAMP STA. 52+12.00 - STA. 52+52.00 124 SQ YD

LEGEND

- STAGE 1: CONSTRUCT RELOCATED 1700TH AVE AND RESURFACE EXISTING 1700TH AVE FROM 224+89.00 (AH) TO STA. 228+98.00
- STAGE 1A: CONSTRUCT SOUTHBOUND IL RTE 32 FROM 1700TH AVE TO IL RTE 33.
- STAGE 1B: CONSTRUCT NORTHBOUND IL RTE 32 FROM 1700TH AVE TO IL RTE 32 AND UNNAMED RD RETURN.
- STAGE I REMOVAL
- TYPE II BARRICADES, DRUMS OR VERTICAL BARRICADES

REVISIONS	
NAME	DATE

ILLINOIS DEPARTMENT OF TRANSPORTATION

TRAFFIC CONTROL STAGE I CONSTRUCTION SHEET 1 OF 15

DATE 8/02

DRAWN BY ASB
CHECKED BY RDW

4/19/06