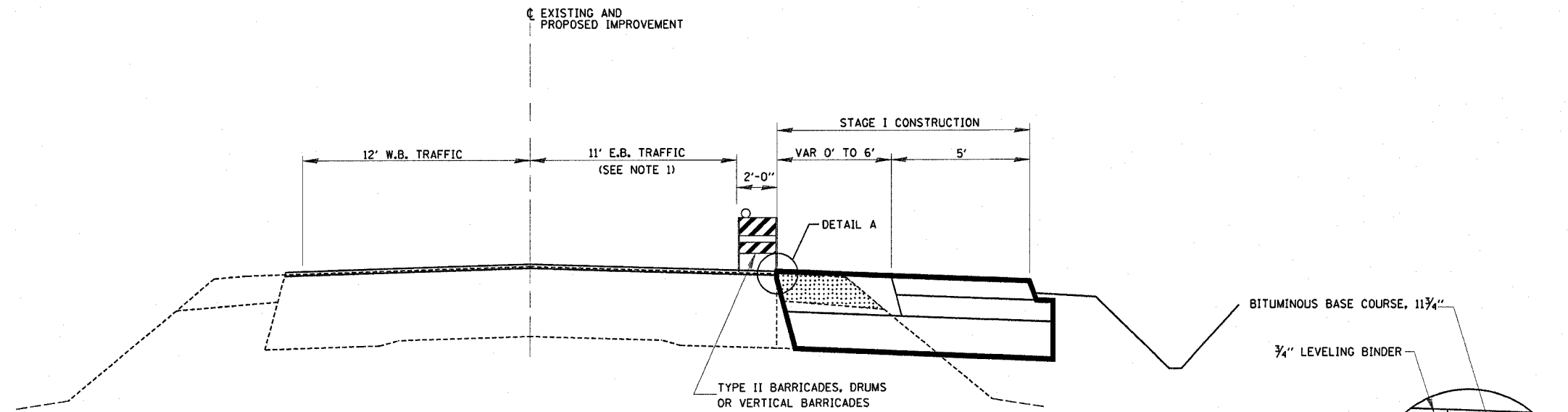
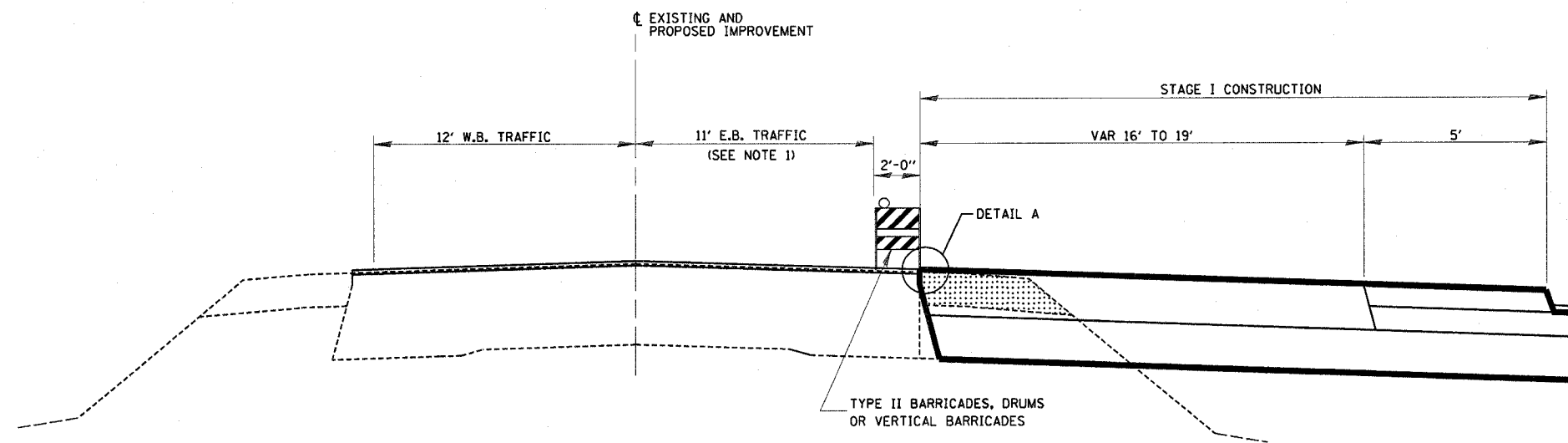
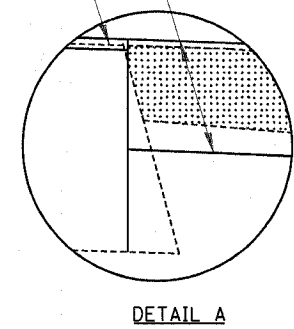


F.A.P. RTE.	SECTION	COUNTY	TOTAL SHEETS	SHEET NO.
774	107 WRS-2, L	EFFINGHAM	127	24
FED. ROAD DIST. NO.	ILLINOIS	FED. AID PROJECT		

CONTRACT NO. 74130



PROPOSED TRAFFIC CONTROL TYPICAL SECTION ①
STA. 541+93.85 TO STA. 896+43



PROPOSED TRAFFIC CONTROL TYPICAL SECTION ②
STA. 896+43 TO STA. 942+50.00

SHEET NOTES:
1. AFTER BASE COURSE WIDENING IS CONSTRUCTED, MOVE BARRICADES/DRUMS/VERTICAL BARRICADES TO PROVIDE FOR 12' E.B. LANE.

- LEGEND
- STAGE I CONSTRUCTION
 - STAGE I REMOVAL

TYPICAL SECTIONS 3, 4, 5 & 6 NOT USED

REVISIONS	
NAME	DATE

ILLINOIS DEPARTMENT OF TRANSPORTATION

TYPICAL SECTIONS
STAGE I
SHEET 5 OF 15

DATE 8/02
DRAWN BY MLO
CHECKED BY SJK

4/19/06