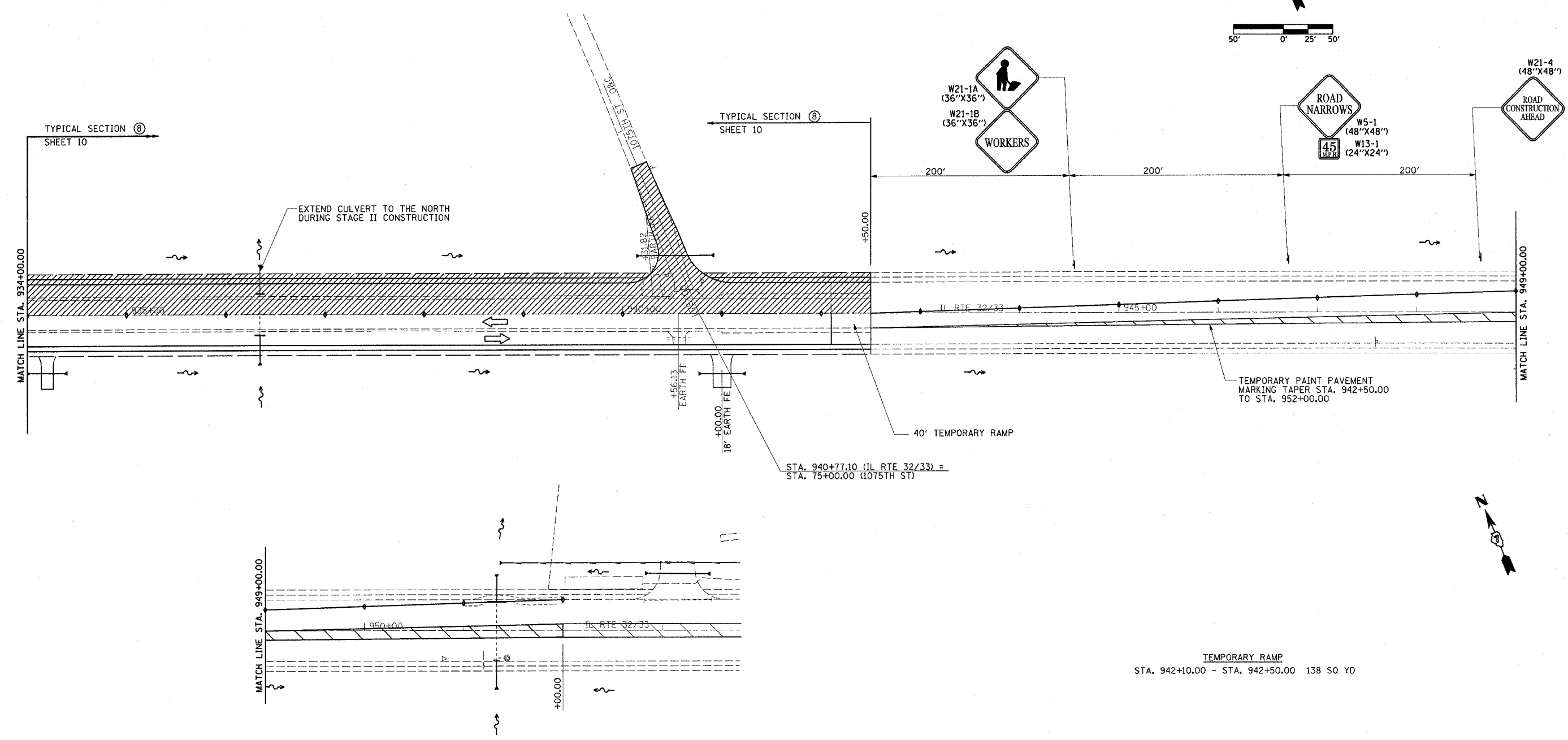
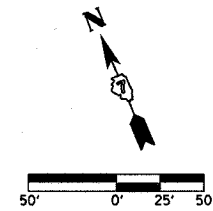


F.A.P. RTE.	SECTION	COUNTY	TOTAL SHEETS	SHEET NO.
774	107 WRS-2, L	EFFINGHAM	127	28
FED. ROAD DIST. NO.		ILLINOIS	FED. AID PROJECT	

CONTRACT NO. 74130



STA. 940+77.10 (IL RTE 32/33) =
STA. 75+00.00 (1075TH ST)

TEMPORARY RAMP
STA. 942+10.00 - STA. 942+50.00 138 SQ YD

LEGEND

- ▨ STAGE II CONSTRUCTION
- TYPE II BARRICADES, DRUMS, OR VERTICAL BARRICADES

REVISIONS	
NAME	DATE

ILLINOIS DEPARTMENT OF TRANSPORTATION

TRAFFIC CONTROL
STAGE II CONSTRUCTION
SHEET 9 OF 15

DATE 8/02

DRAWN BY ASB
CHECKED BY RDW

4/19/06