

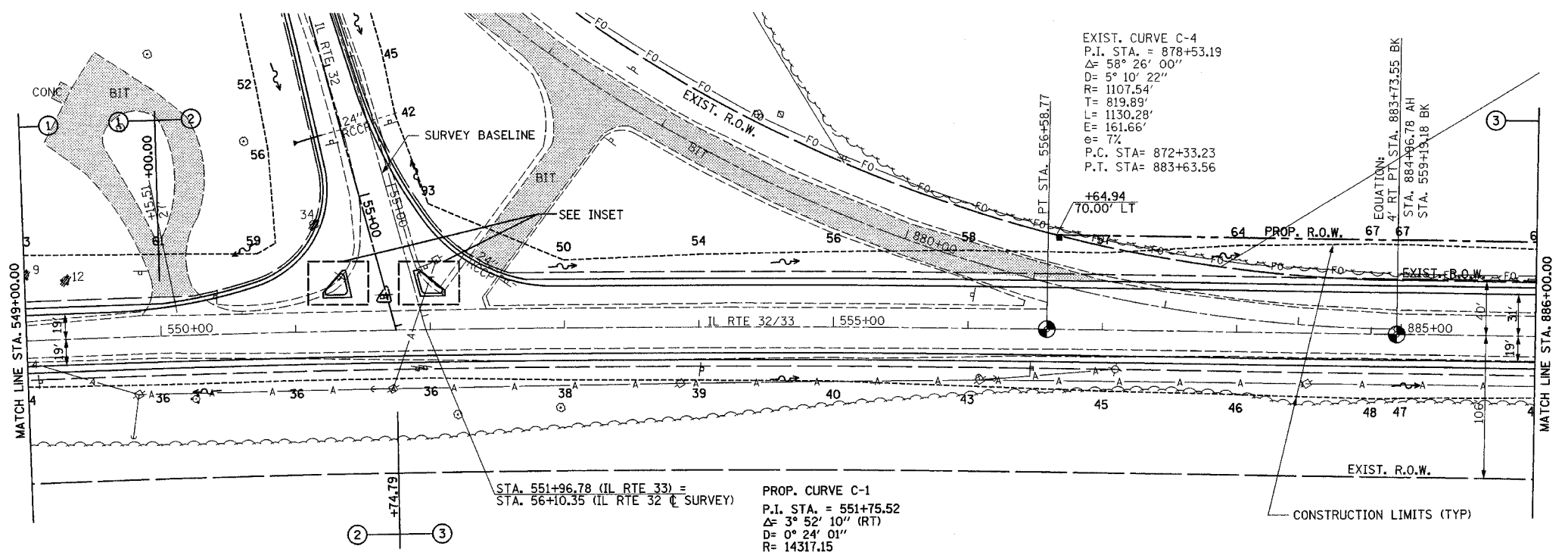
F.A.P. RTE.	SECTION	COUNTY	TOTAL SHEETS	SHEET NO.
774	107 WRS-2, L	EFFINGHAM	127	36
STA. 549+00.00		TO STA. 886+00.00		
FED. ROAD DIST. NO. ILLINOIS FED. AID PROJECT				

CONTRACT NO. 74130

PERMANENT SURVEY MARKERS, TYPE I
 PT STA. 556+58.77 1 EACH
 STA. 884+96.78 1 EACH
 TOTAL 2 EACH



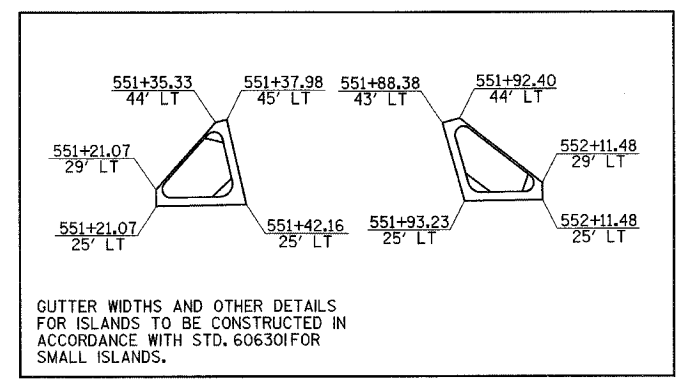
PLAN	REVISION	DATE



ISLAND REMOVAL
 LT STA. 551+60.76 - STA. 551+70.27 86 SQ FT

CONCRETE MEDIAN, TYPE SM-6.24
 LT STA. 551+21.07 - STA. 551+42.16 261 SQ FT
 LT STA. 551+93.23 - STA. 552+11.48 256 SQ FT
 TOTAL 517 SQ FT

PROP. CURVE C-1
 P.I. STA. = 551+75.52
 Δ= 3° 52' 10" (RT)
 R= 14317.15
 L= 966.87
 E= 8.17
 e= 1.56%
 P.C. STA= 546+91.90
 P.T. STA= 556+58.77
 SE ATTAINED STA. 547+00.00 TO STA. 549+50.00
 SE REMOVED STA. 549+50.00 TO STA. 550+00.00



GUTTER WIDTHS AND OTHER DETAILS FOR ISLANDS TO BE CONSTRUCTED IN ACCORDANCE WITH STD. 60630IFOR SMALL ISLANDS.

INSET

PROFILE	REVISION	DATE

