

BITUMINOUS SURFACE REMOVAL - BUTT JOINT  
 STA. 60+00.00 - STA. 60+40.00 93 SQ YD

MH TY A, 4' Ø TIE OPEN LID  
 STA. 61+70.00, 28' LT  
 TL = 602.50  
 R = 599.00

PR PIPE CULVERT, CLASS A, TYPE 1, 36"  
 LENGTH = 128'  
 USFL = 49' LT, STA. 63+51.44, EL = 599.63  
 DSFL = 79' RT, STA. 63+03.02, EL = 598.30  
 2 EACH, PRC FLARED END SECTION, 36"

PR PIPE CULVERT, CLASS A, TYPE 1 24"  
 LENGTH = 95'  
 USFL = 28' LT, STA. 60+75.00, EL = 601.42  
 DSFL = 28' LT, STA. 61+70.00, EL = 599.10  
 1 EACH, PRC FLARED END SECTION, 24"

EXIST. CURVE TR116A  
 PI STA. = 66+50.52  
 $\Delta = 33^\circ 30' 40''$  (LT)  
 $D = 23^\circ 00' 01''$   
 $R = 249.11'$   
 $T = 75.00'$   
 $L = 145.70'$   
 $E = 11.05'$   
 $e = N/C$   
 P.C. STA. = 65+75.52  
 P.T. STA. = 67+21.22

EXIST. CURVE C8  
 PI STA. = 63+14.03  
 $\Delta = 20^\circ 33' 39''$  (RT)  
 $D = 23^\circ 00' 01''$   
 $R = 249.11'$   
 $T = 45.18'$   
 $L = 89.39'$   
 $E = 4.06'$   
 $e = N/C$   
 P.C. STA. = 62+68.85  
 P.T. STA. = 63+58.24

PR PIPE CULVERT, CLASS A, TYPE 1 24"  
 LENGTH = 70'  
 USFL = 28' LT, STA. 61+70.00, EL = 599.00  
 DSFL = 42' RT, STA. 61+70.00, EL = 598.84  
 1 EACH, PRC FLARED END SECTION, 24"

COMBINATION CONCRETE CURB  
 AND GUTTER, TYPE B-6.24

CONCRETE MEDIAN,  
 TYPE SM-6.24

PR PIPE CULVERT, TYPE 1 REINFORCED CONCRETE-ELLIPTICAL,  
 EQUIVALENT ROUND-SIZE 27"  
 LENGTH = 105'  
 USFL = 65' LT, STA. 65+75.00, EL = 600.94  
 DSFL = 40' RT, STA. 65+45.00, EL = 600.41  
 2 EACH, PRC FLARED END SECTION, ELLIPTICAL EQUIVALENT ROUND-SIZE 27"

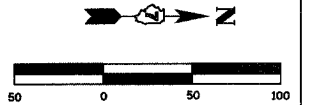
STA. 65+00.00 (1000TH ST) =  
 STA. 896+43.01 (IL RTE 32/33)  
 STA. 64+00.00 (LAKE SARA RD) =  
 STA. 896+48.57 (IL RTE 32/33)

EXIST. CURVE TR116B  
 PI STA. = 68+94.08  
 $\Delta = 17^\circ 57' 11''$  (RT)  
 $D = 23^\circ 00' 01''$   
 $R = 249.11'$   
 $T = 39.35'$   
 $L = 78.06'$   
 $E = 3.09'$   
 $e = N/C$   
 P.C. STA. = 68+54.73  
 P.T. STA. = 69+32.78

FOR INTERSECTION GEOMETRICS  
 SEE SHEET 48

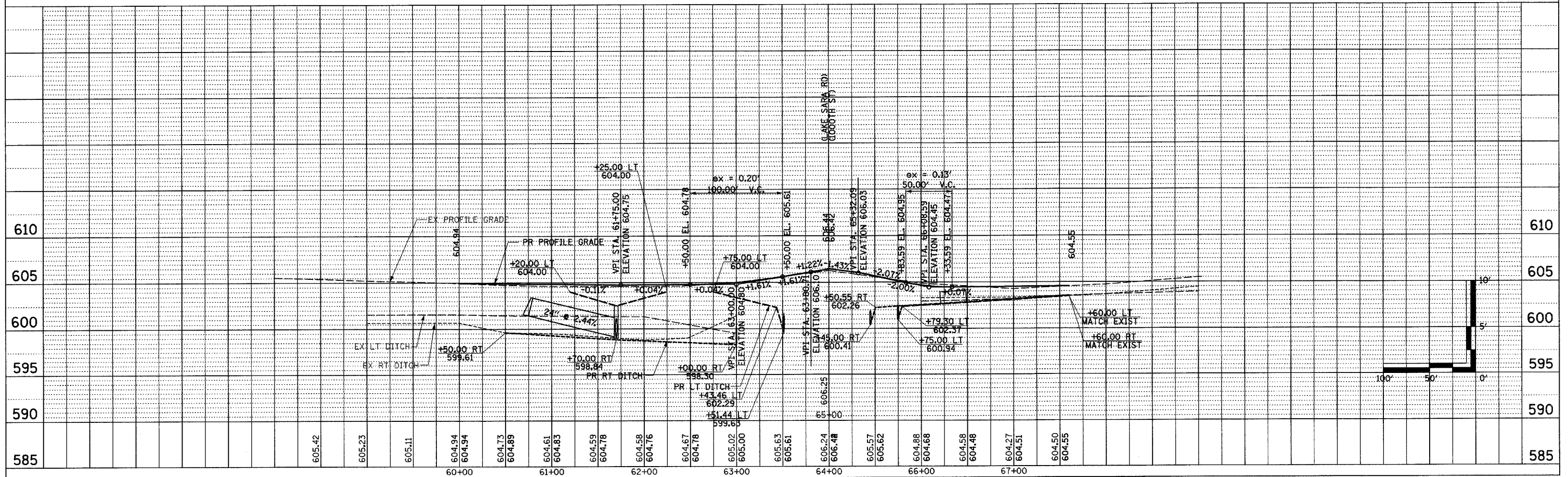
F.A.P. RTE.	SECTION	COUNTY	TOTAL SHEETS	SHEET NO.
774	107 WRS-2, L	EFFINGHAM	127	44
FED. ROAD DIST. NO.		ILLINOIS	FED. AID PROJECT	

CONTRACT NO. 74130



PLAN	SURVEYED	BY	DATE
	DESIGNED		
	CHECKED		
	IN CHARGE		
	DATE		

PROFILE	SURVEYED	BY	DATE
	DESIGNED		
	CHECKED		
	IN CHARGE		
	DATE		



LAKE SARA RD & 1000TH ST PUBLIC ROAD SHEET 3 OF 4