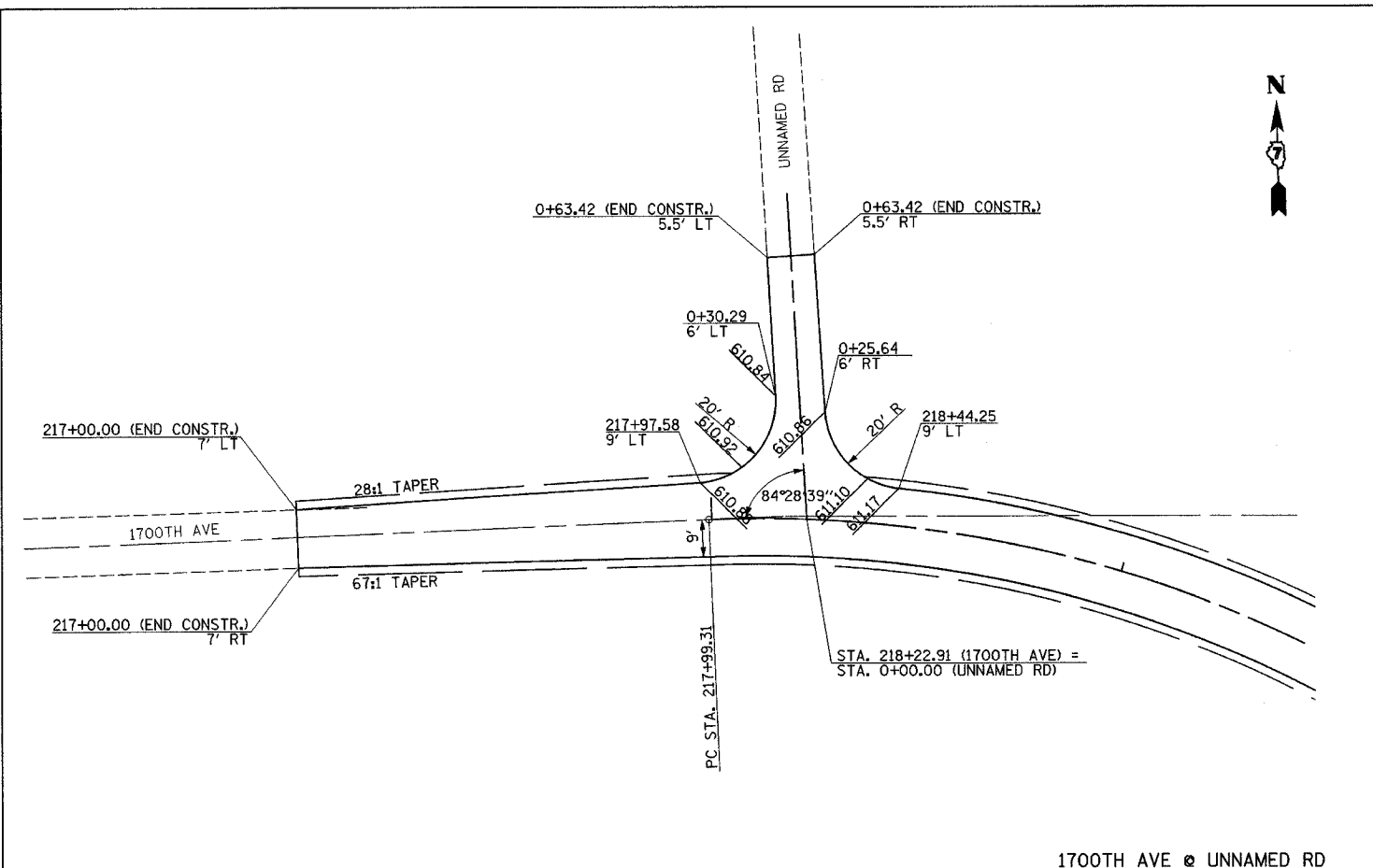
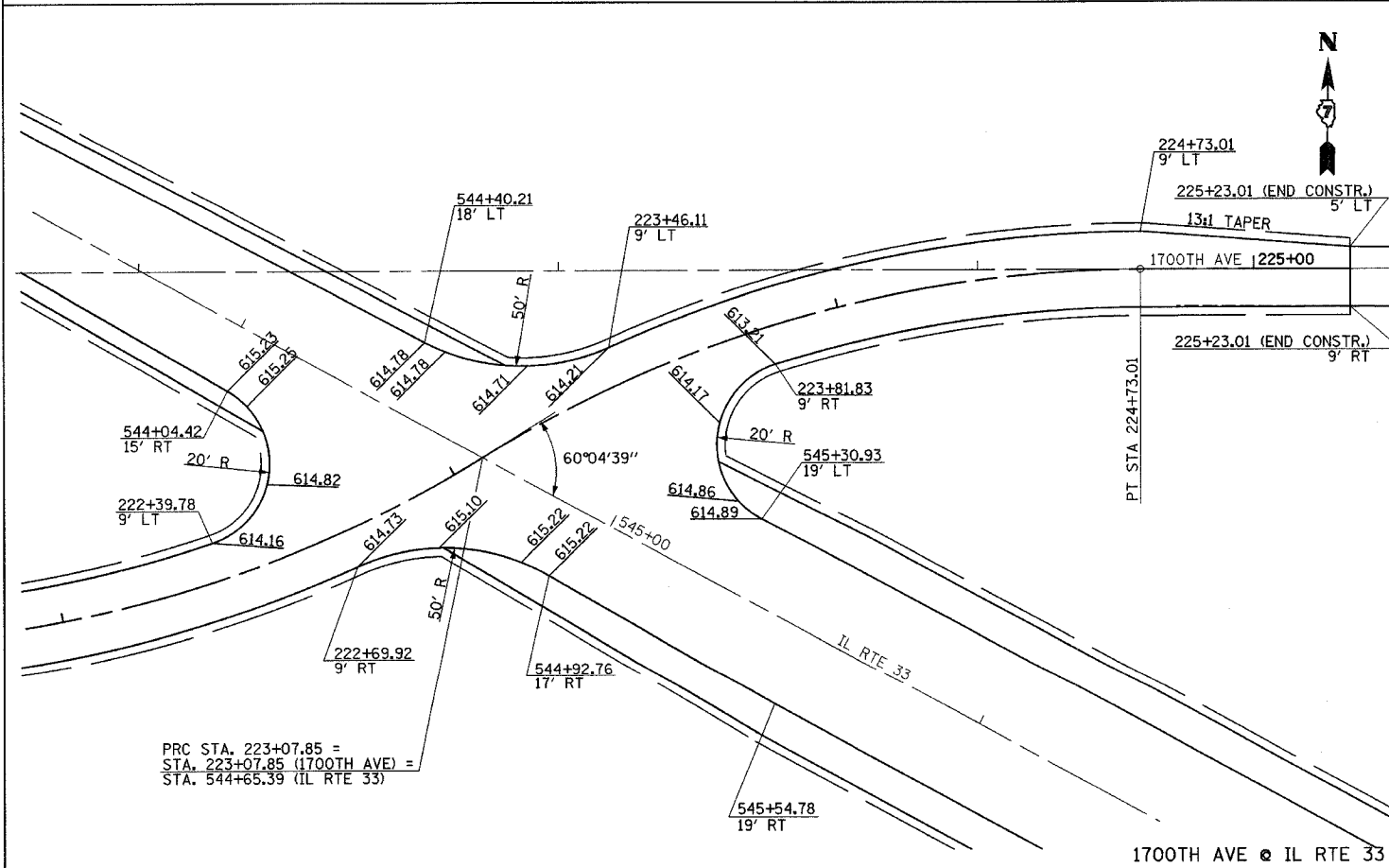


F.A.P. RTE.	SECTION	COUNTY	TOTAL SHEETS	SHEET NO.
774	107 WRS-2, L	EFFINGHAM	127	46
FED. ROAD DIST. NO.	ILLINOIS	FED. AID PROJECT		

CONTRACT NO. 74130



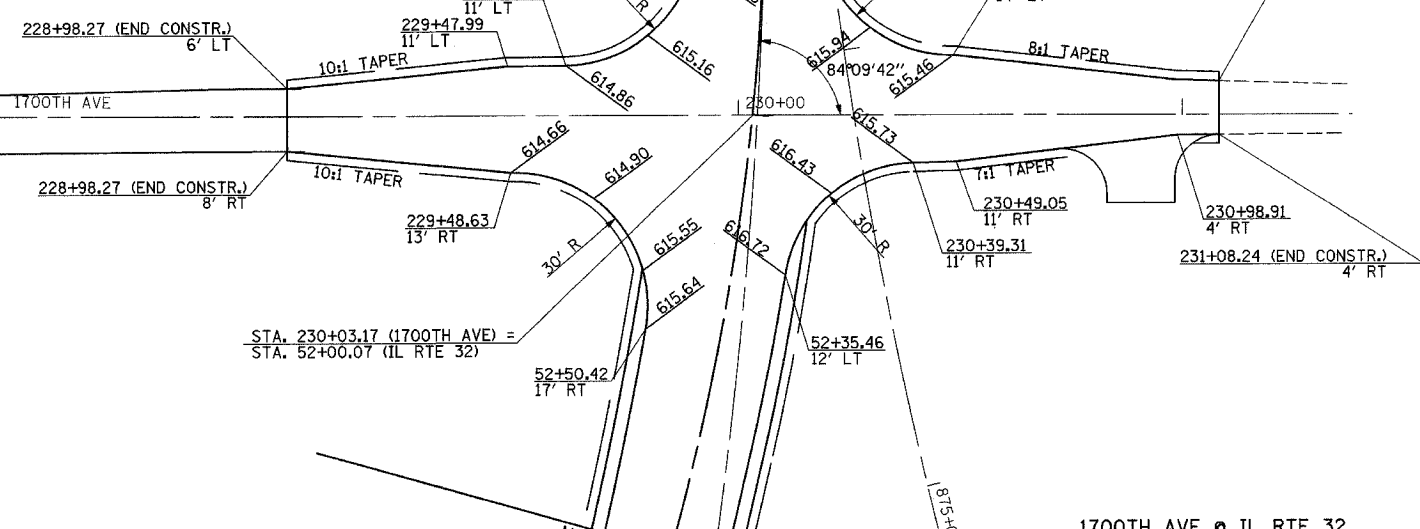
1700TH AVE @ UNNAMED RD



1700TH AVE @ IL RTE 33

PROP. CURVE C92 (RT EOP)
 PI STA. = 10.01' RT 52+79.66
 $\Delta = 13^\circ 08' 46''$ (RT)
 $D = 6^\circ 01' 52''$
 $R = 950.00'$
 $T = 109.47'$
 $L = 217.97'$
 $E = 6.29'$
 P.C. STA. = 15.50' RT 51+67.70
 P.T. STA. = 15.33' RT 53+89.40

PROP. SPIRAL C92B (RT EOP)
 PI STA. = 12.00' RT 51+18.47
 $\Delta = 4^\circ 25' 15.1''$ (RT)
 $LS = 146.6$
 $R = 950'$
 $XS = 146.51'$
 $YS = 3.77'$
 T.S. STA. = 12.00' RT 50+20.71
 S.C. STA. = 15.50' RT 51+67.70



1700TH AVE @ IL RTE 32

PROP. CURVE C98
 PI STA. = 52+26.30
 $\Delta = 14^\circ 59' 59''$ (RT)
 $D = 9^\circ 52' 43''$
 $R = 580.01'$
 $T = 76.36'$
 $L = 151.84'$
 $E = 5.00'$
 $e = 4.00\%$
 P.C. STA. = 51+49.94
 P.T. STA. = 53+01.78
 SE ATTAINED STA. 50+20.00 TO STA. 51+90.00
 SE REMOVED STA. 52+60.00 TO STA. 54+30.00

LEGEND

INDICATES PROPOSED GRADE ELEVATION INTERVAL AROUND CURVES IS 20' UNLESS NOTED

REVISIONS	
NAME	DATE

ILLINOIS DEPARTMENT OF TRANSPORTATION
 INTERSECTION GEOMETRICS
 SHEET 1 OF 4

DATE 8/02

DRAWN BY MLO
 CHECKED BY SJR

EFFINGHAM COUNTY